

Waste & Recycling Guide 2024–2025



JULY 2024						
S	M	T	W	T	F	S
	1	2	3	4	5	6
7	8	9	10	11	12	13
14	15	16	17	18	19	20
21	22	23	24	25	26	27
28	29	30	31			

AUGUST 2024						
S	M	T	W	T	F	S
				1	2	3
4	5	6	7	8	9	10
11	12	13	14	15	16	17
18	19	20	21	22	23	24
25	26	27	28	29	30	31

SEPTEMBER 2024						
S	M	T	W	T	F	S
1	2	3	4	5	6	7
8	9	10	11	12	13	14
15	16	17	18	19	20	21
22	23	24	25	26	27	28
29	30					

OCTOBER 2024						
S	M	T	W	T	F	S
			1	2	3	4
5	6	7	8	9	10	11
12	13	14	15	16	17	18
19	20	21	22	23	24	25
26	27	28	29	30	31	

NOVEMBER 2024						
S	M	T	W	T	F	S
31					1	2
3	4	5	6	7	8	9
10	11	12	13	14	15	16
17	18	19	20	21	22	23
24	25	26	27	28	29	30

DECEMBER 2024						
S	M	T	W	T	F	S
1	2	3	4	5	6	7
8	9	10	11	12	13	14
15	16	17	18	19	20	21
22	23	24	25	26	27	28
29	30	31				

JANUARY 2025						
S	M	T	W	T	F	S
			1	2	3	4
5	6	7	8	9	10	11
12	13	14	15	16	17	18
19	20	21	22	23	24	25
26	27	28	29	30	31	

FEBRUARY 2025						
S	M	T	W	T	F	S
						1
2	3	4	5	6	7	8
9	10	11	12	13	14	15
16	17	18	19	20	21	22
23	24	25	26	27	28	

MARCH 2025						
S	M	T	W	T	F	S
30	31					1
2	3	4	5	6	7	8
9	10	11	12	13	14	15
16	17	18	19	20	21	22
23	24	25	26	27	28	29

APRIL 2025						
S	M	T	W	T	F	S
			1	2	3	4
5	6	7	8	9	10	11
12	13	14	15	16	17	18
19	20	21	22	23	24	25
26	27	28	29	30		

MAY 2025						
S	M	T	W	T	F	S
				1	2	3
4	5	6	7	8	9	10
11	12	13	14	15	16	17
18	19	20	21	22	23	24
25	26	27	28	29	30	31

JUNE 2025						
S	M	T	W	T	F	S
1	2	3	4	5	6	7
8	9	10	11	12	13	14
15	16	17	18	19	20	21
22	23	24	25	26	27	28
29	30					

- Yellow week – Recycling and FOGO bin
- Red week – General waste and FOGO bin
- Xmas Day & New Year's Day – No collection. Collections pushed back one day for the rest of the week.
- Good Friday – No collection. Bins collected Saturday 19 April.

For missed bin collection enquiries, please call the Town on 9285 5000.

To report a damaged bin, or to request a change to your services, please complete the online form 'Changes to Residential Bin Services' at www.cottesloe.wa.gov.au/binrequest

BIN COLLECTION INFORMATION



Ensure bins are placed out by 6am on collection day



Bins must weigh less than 70kg to be collected



Do not overfill bins and ensure lids are firmly closed so items do not spill out

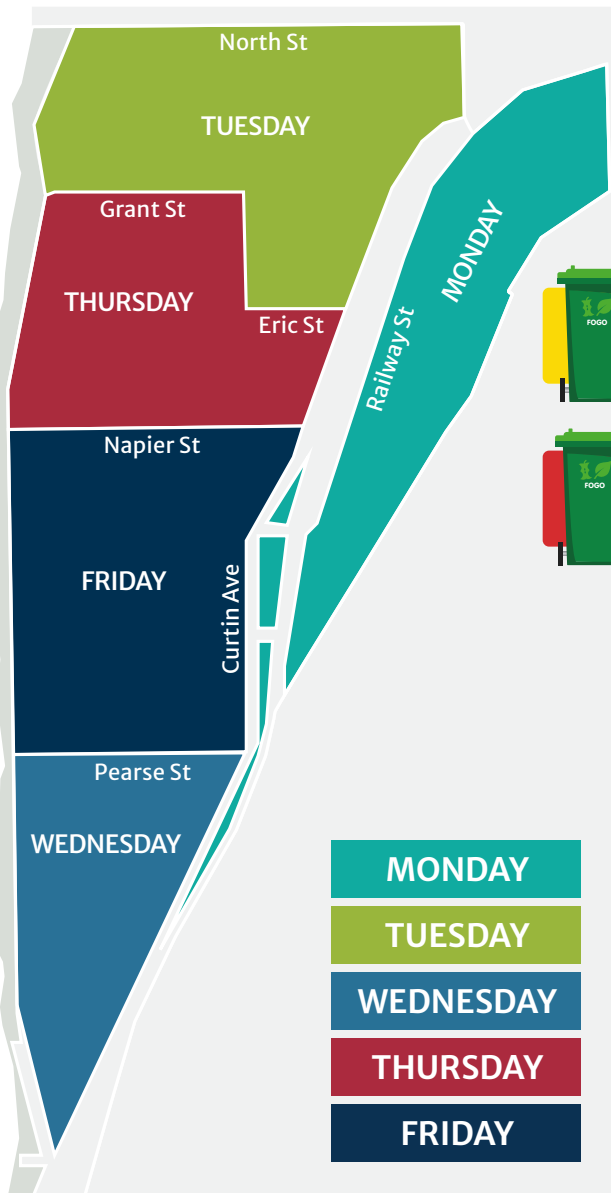
Place bins away from other objects with the front facing the street



For missed bins, call the Town of Cottesloe on 9285 5000.
For general waste and recycling enquiries, contact the WMRC Recycling Hotline on 9384 6711.

Bin Collection Day

See the map on the left for what day of the week your bins will be collected.



Please see front calendar for red and yellow week dates.

Some larger apartment complexes are not currently on the three bin FOGO system. Your collection days and frequencies may vary. Please check with your strata management or contact the Town of Cottesloe.

Weekly Collection

FOGO



Food scraps



Meat and bones



Teabags and coffee grounds



Garden organics



Compostable liners

NO DISPOSABLE COFFEE CUPS



NO PLASTIC BAGS OR SOFT PLASTICS



When buying caddy liners, look for the compostable logo



Good to FOGO

WHAT HAPPENS TO YOUR FOGO?

Your FOGO is processed into quality compost that can go back on to your garden. Available to purchase by the bag at the West Metro Recycling Centre.

Certified to Australian Standard AS 4454

\$6.00 a bag



Healthy plants in your garden



Bagged for sale and good to FOGO



FOGO bin collected



Good to FOGO



Composted into soil products



Tipped at the West Metro Recycling Centre



Transferred to processor in Gingin



GREAT sorts Earth-cycle food scraps and garden waste

Fortnightly Collection

Recycling



Aluminium and steel cans



Glass bottles and jars



Paper (not shredded)



Plastic bottles and containers



Flattened cardboard

GREAT sorts recycle only these five things

Eligible drink containers can also be returned to a Containers for Change drop off point for a 10c refund or donation.



RECYCLING RULES

- Rinse out containers
- Remove lids
- Flatten cardboard
- Place recyclables loose in the bin (not in bags)

HAZARDOUS ITEMS DO NOT BELONG IN ANY KERBSIDE BIN



Bring to the West Metro Recycling Centre



NO PLASTIC BAGS OR SOFT PLASTICS



General waste



Plastic bags and soft plastic packaging



Coffee cups



Tetra-paks and long-life milk cartons



Damaged textiles



Nappies



Household waste

WEST METRO RECYCLING CENTRE

The West Metro Recycling Centre offers safe disposal and recycling of a range of items not suitable for kerbside collection. Visit wmrc.wa.gov.au for fees and more information.

Paid services



Asbestos



Bulk household waste



Construction and demolition waste



Mattresses



Tyres



Greenwaste



Refrigerated appliances

Household Hazardous Waste (HHW)

HHW includes unwanted household products that are flammable, corrosive, explosive, or contain harmful chemicals. Up to 20kg or 20L per material type per visit will be accepted free of charge.

- Acids & alkalis
- Aerosols & spray cans
- Batteries
- Engine coolants
- Fire extinguishers (red only)
- Flares
- Gas cylinders
- Household cleaners
- Light globes & fluorescent tubes
- Paint
- Pesticides/herbicides
- Pool chemicals
- Smoke detectors
- Waste motor oil
- Unknown chemicals – must be in a secure, sealed container



Not sure where something should go? Call the Recycling Hotline on **9384 6711**, visit recycleright.wa.gov.au, or download the Recycle Right app from the App Store or Google Play.



GREAT sorts take special waste to drop-off points

Free community recycling

Household quantities of the following items can be dropped off for free.



Batteries



Bikes



Car batteries



Cardboard



Clothing & shoes



Cooking oil (max 20L)



Corks



E-waste



Household recyclables



Mobile phones



Plastic beer clips



Plastic lids



Plastic plant pots



Polystyrene



Printer cartridges



Scrap metal



Sporting equipment



Stationery



FREE MULCH is available at the West Metro Recycling Centre for residents – just bring proof of address. There is no limit to how much you can take, but you will need to load it into your vehicle yourself.



Towels & blankets



X-rays

Opening Hours

Monday – Friday: 7.30am – 4.00pm

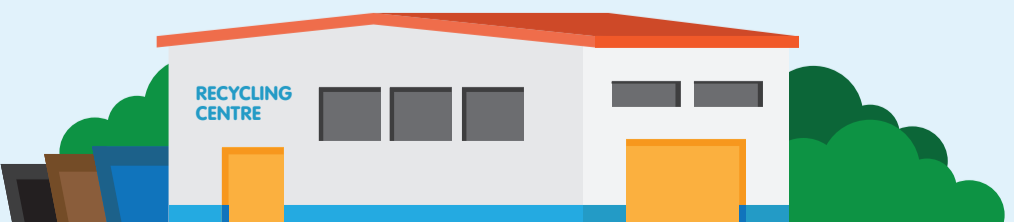
Weekends: 8.00am – 4.00pm

Public Holidays: 7.30am – 2.00pm

Closed Good Friday, Easter Sunday, Christmas Day and New Year's Day



Shenton Park



Verge Valet™ is your pre-booked waste collection service. Book a collection for bulk or green waste for a date that suits you.

How it works

1. Get rid of the good stuff.

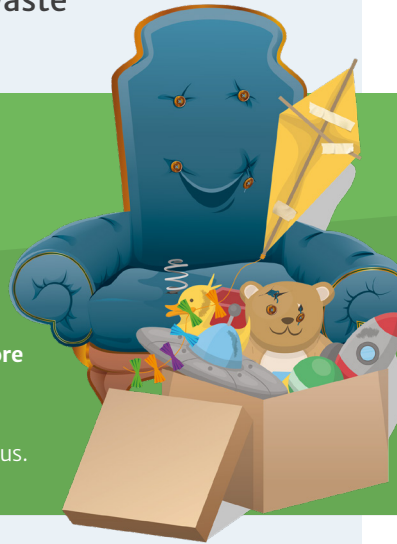
Verge Valet™ is for junk – see if you can sell, donate, repair or give away anything that's still usable before booking your collection.

2. Book your collection online.

Visit vergevalet.com.au

3. Wait for confirmation, then place your junk on the verge no more than three days before your collection date. You'll receive an email and/or text message confirming your collection.

Have your junk ready to go by 7am on the day – and leave the rest to us.



Frequently Asked Questions

How many collections can I book?

Each residential property is eligible for two free bulk waste collections and one free green waste collection per financial year. You can purchase additional collections through Verge Valet™ Extra.



You can change one or both of your bulk waste collections into green waste collections if you prefer.

How far in advance do I need to book?

Please book at least one week in advance. All available collection dates are listed on the website.

How can I change or cancel my booking?

You can change, cancel, or postpone your booking up to one business day before your collection date. Go to 'Changes and cancellations' on vergevalet.com.au or call the WMRC on 9384 6711.

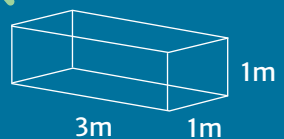
I live in an apartment, can I use Verge Valet™?

Yes, Verge Valet™ can be used by residents in apartments and units. If there are 25 or more units in your complex, please contact the strata manager or caretaker to book collections.



What can I put out for a Verge Valet™ collection?

There is a limit of 3m³ per collection. Where possible, items should not exceed 1.5m in length. See below for accepted items.

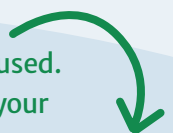


What won't be accepted?

Asbestos, batteries, building materials, household chemicals, glass panels, paint and vehicle parts cannot be collected through Verge Valet™. Drop these items off at the West Metro Recycling Centre (open 7 days a week) – some are free and some are for a fee.



Save your Verge Valet™ collection for items that can't be reused. Flip the page to find out how to donate, sell, repair or reuse your good-quality items.



GREENWASTE
Up to 3m³

Green waste

Branches, garden trimmings, weeds and leaves

General waste

Unusable furniture, broken toys, and general junk

BULK HOUSEHOLD WASTE
Up to 3m³

E-waste

Broken computers, TVs, printers, small electrical goods

Whitegoods

Broken air conditioners, fridges, freezers, dishwashers and washing machines

Mattress



CIRCULAR ECONOMY

LINEAR ECONOMY



RECYCLING ECONOMY



CIRCULAR ECONOMY



A linear economy depends on buying new, buying often, and throwing away last season's unwanted items – whether it's clothes, accessories, homewares, tech or toys – without really thinking about where they'll end up.

A circular economy is a system where materials and energy are kept circulating, at their highest possible value, for as long as possible, **so nothing goes to waste.**

LOOKING TO THE FUTURE

Becoming a **sustainable, low-waste, circular economy** is the vision of WA's waste strategy for 2030.

How to avoid creating waste

Choose loose fruit and veg • Remember your reusable coffee cup • Say no to a straw • Take a fabric bread bag to the bakery • Get to know your local bulk food store • Bring a reusable container for leftovers when you go out to dinner

LEARN MORE ABOUT AVOIDING WASTE

- ✓ Attend a workshop or waste facility tour
- ✓ Follow [@westernmetroregionalcouncil](#) on socials
- ✓ Download resources and factsheets from www.wmrc.wa.gov.au



GREAT sorts avoid excess packaging and food waste



If it's too good to throw away...

GIFT	SHARE	SELL	FIX
Join an online gifting group (eg. Buy Nothing, Gifting with Integrity)	Lend and borrow with friends and neighbours	Facebook Marketplace	Take to a Repair Café/ Repair Lab event
Take to an op-shop	Find your local tool library	Gumtree	Take clothes to a tailor
Gift to friends and family	Bring to a clothing swap	Depop	Take shoes to a repair kiosk
Donate clothing to Dress for Success or the Bindaring Clothing Sale	Host your own swap for clothes, toys, baby gear, etc.	Hold a garage sale	Try DIY – search online/ Youtube for help

Furniture home collection services

If your household furniture is clean and in good condition, you can donate it charity. Try these pick up services:

ORGANISATION	PHONE
Good Sammy	1300 466 372
Paraquod Industries	9381 0189
People Who Care	9379 1944
Salvation Army	13 72 58

All donations should be **clean, usable, and in good condition.** Broken or dirty items are unsellable and create a costly problem for charities.



GREAT sorts swap, sell and gift to charity

REUSE & REPAIR

Remove the magnet before placing this flyer in the recycling bin.
Reuse the magnet or place it in the general waste bin.



Town of Cottesloe

TELEPHONE 9285 5000

EMAIL town@cottesloe.wa.gov.au

ONLINE www.cottesloe.wa.gov.au



Western
Metropolitan
Regional Council

ONLINE www.wmrc.wa.gov.au

VERGE VALET™ & RECYCLING HOTLINE 9384 6711

BOOK VERGE VALET™ www.vergevalet.com.au



GREAT sorts make landfill the last resort. Find out how inside!



Printed on 100% recycled paper