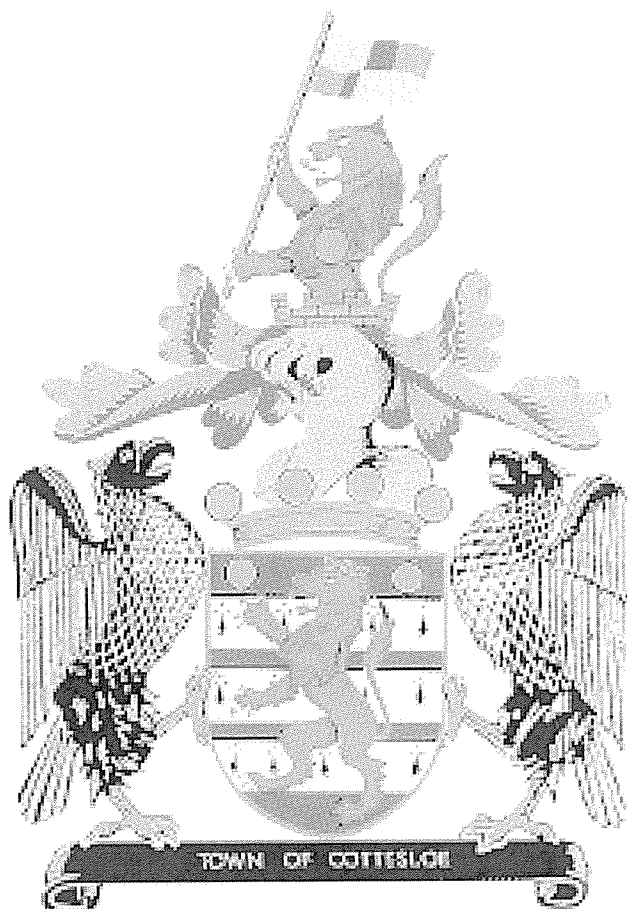


TOWN OF COTTESLOE



FINANCIAL STATEMENTS

FOR THE PERIOD 1 JULY 2014 TO 31 MAY 2015

PRESENTED TO THE WORKS AND CORPORATE SERVICES
COMMITTEE ON 16 JUNE 2015

TOWN OF COTTESLOE
FINANCIAL STATEMENTS
FOR THE PERIOD 1 JULY 2014 TO 31 MAY 2015

TABLE OF CONTENTS

Statement of Financial Activity	1
Operating Statement By Program	2
Operating Statement By Nature & Type	3
Balance Sheet	4 - 5
Surplus/(Deficit Position)	6
Variance Analysis	7 - 11
Other Information	
- List of Payments	12 - 18
- Reserves	19 - 21
- Investments	22
- Loans	23
- Sundry Debtors	24 - 25
- Rates Analysis	26
- Budget Amendments	27
- Capital Works Programme	28 - 31
- Graphs	32 - 37

TOWN OF COTTESLOE

STATEMENT OF FINANCIAL ACTIVITY

FOR THE PERIOD ENDED 1 JULY 2014 TO 31 MAY 2015

	2014-2015 YTD Actual \$	2014-2015 YTD Budget \$	2014-2015 Budget \$	Variances YTD Actual to YTD Budget \$	Variances YTD Actual to YTD Budget %
Operating Revenue					
General Purpose Funding	595,844	599,967	636,350	(4,123)	(1%)
Governance	69,573	69,860	76,213	(287)	(0%)
Law, Order and Public Safety	30,687	18,405	18,980	12,282	67%
Health	80,734	77,810	80,310	2,924	4%
Education and Welfare	41,483	26,639	33,036	14,844	56%
Community Amenities	497,555	472,133	542,035	25,422	5%
Recreation and Culture	328,037	269,888	275,936	58,149	22%
Transport	769,884	785,265	831,237	(15,381)	(2%)
Economic Services	118,362	158,067	173,759	(39,705)	(25%)
Other Property and Services	8,246,772	7,900,550	7,900,600	346,222	4%
Total Operating Revenue	10,778,931	10,378,584	10,568,456	400,347	4%
Operating Expenditure					
General Purpose Funding	(220,343)	(232,678)	(252,997)	12,335	5%
Governance	(656,296)	(654,151)	(801,033)	(2,145)	(0%)
Law, Order and Public Safety	(253,510)	(271,489)	(296,826)	17,979	7%
Health	(179,615)	(223,634)	(243,946)	44,019	20%
Education and Welfare	(285,615)	(206,389)	(219,900)	(79,226)	(38%)
Community Amenities	(3,024,157)	(3,104,300)	(3,375,922)	80,143	3%
Recreation and Culture	(3,387,223)	(3,132,113)	(3,305,252)	(255,110)	(8%)
Transport	(2,973,499)	(2,767,757)	(3,027,531)	(205,742)	(7%)
Economic Services	(310,691)	(372,922)	(392,585)	62,231	17%
Other Property and Services	26,022	22,055	26,481	3,967	(18%)
Total Operating Expenditure	(11,264,927)	(10,943,378)	(11,889,511)	(321,549)	(3%)
Adjustments for Non Cash					
(Profit)/Loss on Asset Disposal	(7,977,077)	(7,900,000)	(7,900,000)	(77,077)	1%
Movement in Deferred Pensioners & Loan Debtors	(45,072)	0	0	(45,072)	
Movement in Employee Benefit Provisions	(34,470)	0	0	(34,470)	
Depreciation	2,198,099	1,876,058	2,046,524	322,041	17%
Total Adjustments for Non Cash	(5,858,520)	(6,023,942)	(5,853,476)	165,422	(3%)
Capital Expense and Revenue					
Additions - Furniture & Equipment	(9,000)	(33,599)	(36,654)	24,599	73%
Additions - Land & Buildings	(500,907)	(257,138)	(280,500)	(243,769)	(95%)
Additions - Plant & Equipment	(275,558)	(339,700)	(339,700)	64,142	19%
Additions - Roads	(303,045)	(300,612)	(300,600)	(2,433)	(1%)
Additions - Car Parks	(74,845)	0	0	(74,845)	
Additions - Footpaths	(300,866)	(225,250)	(225,250)	(75,616)	(34%)
Additions - Drainage	(43,319)	(18,462)	(20,150)	(24,857)	(135%)
Additions - Parks & Reserves	(49,622)	(42,502)	(46,350)	(7,120)	(17%)
Additions - Miscellaneous	(127,289)	(70,000)	(70,000)	(57,289)	(82%)
Additions - Street Furniture	(366,168)	(421,646)	(460,000)	55,478	13%
Additions - Right of Ways	(77,079)	(72,700)	(72,700)	(4,379)	(6%)
Additions - Irrigation	(6,120)	(28,644)	(30,800)	22,524	79%
Proceeds from Disposal of Assets	8,745,565	8,214,930	8,214,930	530,635	(6%)
Proceeds from New Loans	0	0	0	0	
Principal Repayments/Disbursements	(365,759)	(365,759)	(365,759)	0	0%
Self Supporting Principal Repayments	23,906	35,237	35,237	(11,331)	32%
Transfer from Reserves	318,002	5,000	5,000	313,002	(6,260%)
Transfer to Reserves	(8,797,775)	(8,356,421)	(8,360,648)	(441,354)	(5%)
Total Capital Expense and Revenue	(2,209,879)	(2,277,266)	(2,353,944)	67,387	3%
Opening Surplus / (Deficit)	1,192,903	764,096	764,096	428,807	56%
Closing Surplus / (Deficit)	1,537,212	662,473	0	874,739	132%
AMOUNT REQUIRED FROM RATES	(8,898,704)	(8,764,379)	(8,764,379)	(134,325)	(2%)

TOWN OF COTTESLOE

OPERATING STATEMENT BY PROGRAM

FOR THE PERIOD ENDED 1 JULY 2014 TO 31 MAY 2015

	2014-2015 Actual \$	2014-2015 YTD Budget \$	2014-2015 Budget \$	Variances Budget to YTD Actual \$	Variances Budget to YTD Actual %
Revenue from Ordinary Activities					
General Purpose Funding	9,494,548	9,364,346	9,400,729	130,202	1%
Governance	69,558	69,860	76,213	(302)	(0%)
Law, Order and Public Safety	30,687	18,405	18,980	12,282	67%
Health	80,734	77,810	80,310	2,924	4%
Education and Welfare	41,483	26,639	33,036	14,844	56%
Community Amenities	497,555	472,133	542,035	25,422	5%
Recreation and Culture	272,988	269,888	275,936	3,100	1%
Transport	686,601	785,265	831,237	(98,664)	(13%)
Economic Services	118,362	158,067	173,759	(39,705)	(25%)
Other Property and Services	4,834	550	600	4,284	779%
Total Operating Revenue	11,297,350	11,242,963	11,432,835	54,387	0%
Expenses from Ordinary Activities					
General Purpose Funding	(220,345)	(232,678)	(252,007)	12,333	5%
Governance	(656,296)	(653,876)	(800,733)	(2,420)	(0%)
Law, Order and Public Safety	(253,510)	(271,489)	(296,826)	17,979	7%
Health	(179,615)	(223,634)	(243,946)	44,019	20%
Education and Welfare	(285,615)	(206,389)	(219,900)	(79,226)	(38%)
Community Amenities	(2,993,383)	(3,104,300)	(3,375,922)	110,917	4%
Recreation and Culture	(3,049,189)	(2,791,595)	(2,964,734)	(257,594)	(9%)
Transport	(2,752,692)	(2,767,757)	(3,027,531)	15,065	1%
Economic Services	(305,661)	(372,922)	(392,585)	67,261	18%
Other Property and Services	26,022	22,055	26,481	3,967	(18%)
Total Operating Expenditure	(10,670,284)	(10,602,585)	(11,548,693)	(67,699)	(1%)
Borrowing Costs					
Governance	0	(275)	(300)	275	100%
Recreation and Culture	(316,415)	(340,518)	(340,518)	24,103	7%
Total Borrowing Costs	(316,415)	(340,793)	(340,818)	24,378	7%
Grants/Contributions for Asset Development					
Recreation and Culture	49,797	0	0	49,797	
Transport	75,182	0	0	75,182	
Total Grants/Contributions for Asset Development	124,979	0	0	124,979	
Profit/ (Loss) on Asset Disposal					
Governance	14	0	0	14	
Community Amenities	(30,774)	0	0	(30,774)	
Recreation and Culture	(16,366)	0	0	(16,366)	
Transport	(212,705)	0	0	(212,705)	
Economic Services	(5,030)	0	0	(5,030)	
Other Property and Services	8,241,938	7,900,000	7,900,000	341,938	4%
Total Profit/ (Loss) on Asset Disposal	7,977,077	7,900,000	7,900,000	77,077	
NET PROFIT OR LOSS	8,412,707	8,199,585	7,443,324	213,122	3%

TOWN OF COTTESLOE

OPERATING STATEMENT BY NATURE & TYPE

FOR THE PERIOD ENDED 1 JULY 2014 TO 31 MAY 2015

	2014-2015 YTD Actual \$	2014-2015 YTD Budget \$	2014-2015 Budget \$	Variances Budget to Actual YTD \$	Variances Budget to Actual YTD %
Operating Revenue					
Rates	8,898,704	8,764,379	8,764,379	134,325	2%
Grants - Operating	299,632	163,762	163,800	135,870	83%
Fees & Charges	1,629,337	1,680,735	1,815,283	(51,398)	(3%)
Interest Earnt	276,861	429,780	463,900	(152,919)	(36%)
Other Revenue	192,815	204,307	225,473	(11,492)	(6%)
Total Operating Revenue	11,297,349	11,242,963	11,432,835	54,386	0%
Operating Expenditure					
Employee Costs	(3,401,690)	(3,417,578)	(3,727,930)	15,888	0%
Contractors and Materials	(3,823,796)	(3,819,124)	(4,311,454)	(4,672)	(0%)
Depreciation	(2,198,099)	(1,876,058)	(2,046,524)	(322,041)	(17%)
Insurance	(185,747)	(192,906)	(192,905)	7,159	4%
Interest Expense	(316,415)	(340,793)	(340,818)	24,378	7%
Utility Costs	(278,910)	(456,648)	(318,486)	177,738	39%
Other Expenses	(782,041)	(840,271)	(951,394)	58,230	7%
Total Operating Expenditure	(10,986,698)	(10,943,378)	(11,889,511)	(43,320)	(0%)
Grants/Contributions - Non Operating	124,979	0	0	124,979	
Profit on Asset Disposals	8,255,307	7,900,000	7,900,000	355,307	(4%)
Loss on Asset Disposals	(278,230)	0	0	(278,230)	
NET PROFIT OR LOSS	8,412,707	8,199,585	7,443,324	213,122	3%

TOWN OF COTTESLOE

STATEMENT OF FINANCIAL POSITION

FOR THE PERIOD 1 JULY 2014 TO 31 MAY 2015

		2014-2015 YTD Actual	2013-2014 YTD Actual	2013-2014 Actual
CURRENT ASSETS				
Receivables				
	Rates	155,919	154,459	65,905
	Sundry Debtors	87,193	109,594	166,682
	Accrued Income	57,434	25,326	7,057
	Self Supporting Loans	11,331	0	35,237
Prepayments	Prepaid Expenses	0	0	31,214
Inventories	Inventories	41,624	41,554	41,624
Cash Assets				
	Municipal Account	38,424	90,245	115,740
	Till Floats	700	700	700
	Investment Account	378,133	452,563	355,468
	Term Investments	1,956,562	2,045,156	1,245,168
	Restricted - Reserves	9,662,718	1,089,196	1,182,945
	Restricted - Trust	709,040	651,834	651,814
		<hr/>	<hr/>	<hr/>
TOTAL CURRENT ASSETS		13,099,078	4,660,627	3,899,554
CURRENT LIABILITIES				
Payables		399,002	260,634	120,377
Payable Trust		760,182	705,158	672,250
Accrued Expenses		728,031	3	695,840
Interest Bearing Liabilities		0	0	365,759
Provisions		692,470	629,251	683,621
		<hr/>	<hr/>	<hr/>
TOTAL CURRENT LIABILITIES		2,580,285	1,595,046	2,537,847
NON CURRENT ASSETS				
Receivables				
	Deferred Rates & ESL	185,294	177,114	194,999
	Self Supporting Loans	256,620	291,857	256,620
	Sundry Debtors - Loans	54,777	0	0
Property Plant and Equipment				
	Furniture and Equipment	395,682	371,757	521,648
	Land and Buildings	44,929,139	4,605,837	45,535,947
	Plant and Equipment	635,373	678,861	672,185
	Equity Investments	1,034,684	1,055,826	1,034,684
Infrastructure				
	Roads	6,173,441	6,496,767	6,550,270
	Car Parks	803,203	763,456	759,019
	Footpaths	2,098,834	2,116,743	2,125,678
	Drainage	3,411,303	3,368,288	3,541,032
	Parks and Reserves	168,344	157,689	160,334
	Miscellaneous	893,030	735,322	820,600
	Street Furniture	624,595	332,055	319,535
	Right of Ways	323,401	214,211	263,748
	Irrigation	263,995	282,735	283,114
		<hr/>	<hr/>	<hr/>
TOTAL NON CURRENT ASSETS		62,251,715	21,648,518	63,039,413

TOWN OF COTTESLOE

STATEMENT OF FINANCIAL POSITION

FOR THE PERIOD 1 JULY 2014 TO 31 MAY 2015

	2014-2015 YTD Actual	2013-2014 YTD Actual	2013-2014 Actual
NON CURRENT LIABILITIES			
Interest Bearing Liabilities	5,147,371	5,513,130	5,147,371
Provisions	26,842	69,508	70,161
TOTAL NON CURRENT LIABILITIES	5,174,213	5,582,638	5,217,532
NET ASSETS	67,596,295	19,131,461	59,183,588
EQUITY			
Reserves - Cash Backed	9,662,718	1,089,232	1,182,945
Reserves - Asset Revaluation	29,047,860	239,554	29,047,860
Retained Surplus	28,885,717	27,802,675	28,952,783
TOTAL EQUITY	67,596,295	29,131,461	59,183,588
RESERVES - CASH BACKED			
Opening Balance	1,182,945	1,297,388	1,370,269
Transfer to Reserves	8,797,775	52,483	73,315
Transfer from Reserves	(318,002)	(260,639)	(260,639)
TOTAL RESERVES - CASH BACKED	9,662,718	1,089,232	1,182,945
RESERVES - ASSET REVALUATION			
Opening Balance	29,047,860	239,554	29,047,860
TOTAL RESERVES - ASSET REVALUATION	29,047,860	239,554	29,047,860
RETAINED SURPLUS			
Opening Balance	28,952,783	25,776,737	28,229,763
Change in Net Assets from Operations	8,412,707	1,817,782	535,696
Transfer from Reserve	318,002	260,639	260,639
Transfer to Reserve	(8,797,775)	(52,483)	(73,315)
TOTAL RETAINED SURPLUS	28,885,717	27,802,675	28,952,783
TOTAL EQUITY	67,596,295	29,131,461	59,183,588

TOWN OF COTTESLOE

SURPLUS/(DEFICIT) ANALYSIS

FOR THE PERIOD 1 JULY 2014 TO 31 MAY 2015

	YTD Actual \$	2014 \$
Surplus/(Deficit)	<u>1,537,212</u>	<u>1,192,903</u>
<u>Comprises:</u>		
Cash - Unrestricted	2,322,677	1,641,641
Cash - Restricted	9,662,718	1,237,945
Rates - Current	155,919	69,230
Sundry Debtors	87,193	166,690
Accrued Income	57,434	7,057
Prepayments	0	31,214
GST Receivable	0	50,745
Loans - Clubs	11,331	35,237
Other Tax Debtors	0	512
Inventories		
- History Books	41,624	41,624
- Land Held for Resale	0	156,175
Less:		
Sundry Creditors	(399,004)	(103,312)
Accrued Expenses	(563,020)	(482,681)
Accrued Interest on Debentures	(97,061)	(97,489)
Accrued Salaries and Wages	(68,550)	(118,994)
Other Tax Liabilities	0	(68,334)
Current Employee Benefits Provision	(692,470)	(683,621)
Loans	0	(365,759)
Other	0	0
Net Current Assets	<u>10,518,791</u>	<u>1,517,880</u>
Less:		
Reserves - Restricted Cash	(9,662,718)	(1,182,945)
Land Held for Resale	0	(156,175)
Loans - Clubs	(11,331)	(35,237)
Add:		
Loans	0	365,759
Current Employee Benefits Provision	692,470	683,621
Surplus/(Deficit)	<u>1,537,212</u>	<u>1,192,903</u>

TOWN OF COTTESLOE

STATEMENT OF FINANCIAL ACTIVITY - VARIANCE ANALYSIS
FOR THE PERIOD ENDED 1 JULY 2014 TO 31 MAY 2015

Note 2. VARIANCES (Report on material variances from the Statement of Financial Activity)

(Material variances are deemed to be greater than 15% or \$25,000)

OPERATING REVENUE

<u>Program/Nature & Type</u>	<u>YTD Actual</u> \$	<u>YTD Budget</u> \$	<u>Variance</u> \$	<u>Variance</u> %	<u>Impact of Variation</u>	<u>Main Factors</u> \$	<u>Manager</u>	<u>Officer</u>	<u>Main Factors Influencing Variance</u>
General Purpose Funding	595,844	599,967	(4,123)	(1%)	Reduced revenue	(166,124)	FM	FM	Reduced interest on investments
					Increased revenue	151,160	FM	FM	Timing of Financial Assistance Grant funding
Law, Order & Public Safety	30,687	18,405	12,282	67%	Extra revenue	10,000	FM	FM	Increased revenue from registration fees
Education & Welfare	41,483	26,638	14,845	56%	Timing Extra revenue	5,900 5,231	FM FM	FM FM	Timing of lease reimbursements Extra reimbursements
Community Amenities	497,555	472,133	25,422	5%	Extra revenue	36,034	FM	FM	Extra Town Planning fees
Recreation & Culture	328,037	269,888	58,149	22%	Extra revenue matched with extra expenditure	49,797	MCCS	MCCS	Contribution towards structural works at Seaview Golf Club
Transport	769,884	785,265	(15,381)	(2%)	Reduced revenue with extra expenditure Carry forward from prior period	(108,366)	MCCS	SR	Reduced revenue from parking
						18,182	MCCS	MCCS	Contribution towards the new Depot storage bays
						57,000	MES	MES	Grant funding from 2013/2014
Economic Services	118,362	158,067	(39,705)	(25%)	Reduced revenue	(40,544)	MDS	BS	Reduction in building licence application fees
Other Property & Services	8,246,772	7,900,550	346,222	4%	Timing	346,222	FM	FM	Extra revenue from the disposal of property

TOWN OF COTTESLOE

STATEMENT OF FINANCIAL ACTIVITY - VARIANCE ANALYSIS
FOR THE PERIOD ENDED 1 JULY 2014 TO 31 MAY 2015

Note 2. VARIANCES (Report on material variances from the Statement of Financial Activity)

OPERATING EXPENDITURE

<u>Program/Nature & Type</u>	<u>YTD Actual</u> \$	<u>YTD Budget</u> \$	<u>Variance</u> \$	<u>Variance</u> %	<u>Impact of Variation</u>	<u>Main Factors</u> \$	<u>Manager</u>	<u>Officer</u>	<u>Main Factors Influencing Variance</u>
Health	(179,615)	(223,634)	44,019	20%	Timing/Possible reduced expenditure Timing	13,862 6,784	FM FM	FM FM	Reduced employee costs Timing of contractor expenditure
Education & Welfare	(285,615)	(206,389)	(79,226)	(38%)	Depreciation - Non Cash	5,500 8,644 (61,842)	PEHO FM FM	PEHO FM FM	Reduced legal expenses Reduced administration overheads Increased depreciation costs
Community Amenities	(3,024,157)	(3,104,300)	80,143	3%	Timing/Possible reduced expenditure Extra expenditure Mainly Timing Reduced expenditure	41,671 (31,916) 42,207 17,616	MDS MDS MDS FM	PEHO MDS SO FM	Timing, possible saving of waste contractors Extra contractors in Town Planning Timing of sustainability expenditures Reduced administration overheads
Recreation & Culture	(3,387,223)	(3,132,113)	(255,110)	(8%)	Depreciation - Non Cash	(208,374) (51,960)	FM MES	FM DC	Depreciation Increased expenditure on beach parks
Transport	(2,973,499)	(2,767,757)	(205,742)	(7%)	Non Cash Offset	(220,807) 54,493	FM MES	FM MES	Non cash loss on disposal of assets Increased expenditure on road and street tree maintenance offset elsewhere
Economic Services	(310,691)	(372,922)	62,231	17%	Timing/Possible reduced expenditure	59,230	MDS	BS	Timing of contractor expenses
Other Property & Services	(26,022)	(22,055)	(3,967)	(18%)	Timing	(3,967)	FM	FM	Timing of allocations

TOWN OF COTTESLOE

STATEMENT OF FINANCIAL ACTIVITY - VARIANCE ANALYSIS
FOR THE PERIOD ENDED 1 JULY 2014 TO 31 MAY 2015

Note 2. VARIANCES (Report on material variances from the Statement of Financial Activity)

NON CASH TRANSACTIONS

<u>Program/Nature & Type</u>	<u>YTD Actual</u> \$	<u>YTD Budget</u> \$	<u>Variance</u> \$	<u>Variance</u> %	<u>Impact of Variation</u>	<u>Main Factors</u> \$	<u>Manager</u>	<u>Officer</u>	<u>Main Factors Influencing Variance</u>
(Profit)/Loss on Asset Disposal	(7,977,077)	(7,900,000)	(77,077)	1%	Timing	7,900,000	FM	FM	Variation in profit/loss on sale/disposals
Movement in Non Current Receivables	(45,072)	-	(45,072)		Non cash adjustments	(45,072)	FM	FM	Movements in non current receivables
Movement in Employee Provisions	(37,633)	-	(37,633)		Non cash adjustments	(37,633)	FM	FM	Movements in employee entitlements
Depreciation	2,198,099	1,876,058	322,041	17%	Depreciation - Non Cash	322,041	FM	FM	Increased depreciation charges due to revaluation of buildings

TOWN OF COTTESLOE

STATEMENT OF FINANCIAL ACTIVITY - VARIANCE ANALYSIS
FOR THE PERIOD ENDED 1 JULY 2014 TO 31 MAY 2015

Note 2. VARIANCES (Report on material variances from the Statement of Financial Activity)

CAPITAL EXPENDITURE AND INCOME

	YTD Actual	YTD Budget	Variance	Variance	Impact of Variation	Main Factors	Manager	Officer	Main Factors Influencing Variance
	\$	\$	\$	%		\$			
- Furniture & Equipment	(9,000)	(33,599)	24,599	73%	Reduced expenditure	24,599	FM	FM	Decreased expenditure
- Land & Buildings	(500,907)	(257,138)	(243,769)	(95%)	Additional expenditure partly funded by third party	(105,922)	MCCS	FM	Remedial works to Sea View Golf Club Building
					Additional expenditure	(256,584)	MES	MES	Site development costs at the former Depot site
					Budget amendment	73,368	MES	MES	Budget amendment
					Timing	82,371	MES	MES	Timing of Civic Centre restoration works
- Plant & Equipment	(275,558)	(339,700)	64,142	19%	Reduced expenditure partly offset by reduced income	64,142	MES	FM	Reduced expenditure on vehicles
- Infrastructure Car Parks	(74,845)	-	(74,845)		Extra expenditure to be part funded by third party	(74,845)	MES	FM	Car park construction works at Sea View Golf Club
- Infrastructure Footpaths	178,549	225,252	(46,703)	21%	Timing	(46,703)	MES	FM	Timing of footpath works
- Infrastructure Drainage	(43,319)	(18,462)	(24,857)	(135%)	Additional expenditure	(24,857)	MES	WS	Additional expenditure

TOWN OF COTTESLOE

STATEMENT OF FINANCIAL ACTIVITY - VARIANCE ANALYSIS
FOR THE PERIOD ENDED 1 JULY 2014 TO 31 MAY 2015

Note 2. VARIANCES (Report on material variances from the Statement of Financial Activity)

CAPITAL EXPENDITURE AND INCOME (Continued)

	YTD Actual	YTD Budget	Variance	Variance %	Impact of Variation	Main Factors	Manager	Officer	Main Factors Influencing Variance
	\$	\$	\$	%		\$			
- Infrastructure Miscellaneous	(127,289)	(70,000)	(57,289)	(82%)	Extra expenditure	(41,443)	MES	MES	Extra expenditure to move the storage bays from the former Depot site to sea view golf course
- Infrastructure Street Furniture	(488,495)	(421,646)	(66,849)	(16%)	Extra expenditure	(66,849)	MES	MES	Extra expenditure in the Town Centre
- Infrastructure Irrigation	(6,120)	(28,644)	22,524	79%	Mainly reduced expenditure	22,524	MES	MES	Mainly reduced expenditure

CAPITAL, NON CASH & RESERVE TRANSFERS (Cont'd)

	Variance	Variance %	Explanation	Manager	Officer	Main Factors Influencing Variance
	\$	%				
- Proceeds from Disposal of Assets	8,745,565		(6%) Timing	MES	FM	Extra revenue from the disposal of property
Self Supporting Loan Repayments	23,906		32% Timing	FM	FM	Timing of self supporting loan repayments
<u>RESERVE TRANSFERS</u>						
- Transfers from Reserves	318,002		Extra transfers from (6,260%) reserves	FM	FM	Extra transfers from reserves as per Budget Review
- Transfer to Reserves	(8,797,775)		Reduced transfer to (5%) reserves	MES	FM	Extra revenue from the disposal of property

TOWN OF COTTESLOE

LIST OF ACCOUNTS PAID DURING MAY 2015 AND PRESENTED TO A MEETING OF THE WORKS & CORPORATE SERVICES COMMITTEE HELD ON 16 JUNE 2015

CERTIFICATE OF CHIEF EXECUTIVE OFFICER

ML

<u>Date</u>	<u>Payment Reference</u>	<u>Payee</u>	<u>Description</u>	<u>Amount</u>
6/05/2015	00025383	Australian Institute of Building Surveyors	Training course	\$ 545.00
6/05/2015	00025384	Bluestone Corporation T/A Boatshed	Flowers	\$ 74.95
5/05/2015	00025385	Domain Catering	Catering services	\$ 1,800.00
5/05/2015	00025386	Fines Enforcement Registry	Cancelled	\$ -
5/05/2015	00025387	F Hood	Bond & Key Deposit Refund	\$ 120.00
5/05/2015	00025388	S Skyzpkoniak	Refund of Lesser Hall Booking	\$ 250.00
5/05/2015	00025389	Alastair Field	Reimbursement - Overpayment	\$ 50.00
5/05/2015	00025390	G Miller	Refund	\$ 100.00
6/05/2015	00025391	WA Super	Superannuation contributions	\$ 17,962.22
6/05/2015	00025392	Colonial First State Rollover	Superannuation contributions	\$ 218.61
6/05/2015	00025393	ING DIRECT Superannuation Fund	Superannuation contributions	\$ 83.20
14/05/2015	00025394	Alinta	Gas Supply	\$ 85.70
14/05/2015	00025395	Harvey Norman - Peppermint Grove	Cancelled	\$ -
14/05/2015	00025396	Landgate - VGO	Fortnightly valuations	\$ 152.70
14/05/2015	00025397	Synergy	Streetlight Tariff Charge	\$ 12,021.10
14/05/2015	00025398	Telstra Corporation Limited	Communications charges	\$ 1,359.49
14/05/2015	00025399	T R Humphrey	Overpayment Refund	\$ 709.31
14/05/2015	00025400	Cancer Support Association of WA	Bond Refund - War Memorial Hall	\$ 200.00
14/05/2015	00025401	N Carolane	Cancelled	\$ -

<u>Date</u>	<u>Payment Reference</u>	<u>Payee</u>	<u>Description</u>	<u>Amount</u>
14/05/2015	00025402	C Irving	Refund	\$ 100.00
19/05/2015	00025403	Asphalt In A Bag	Supply & Delivery - Asphalt	\$ 1,790.25
19/05/2015	00025404	Cancelled	Cancelled	\$ -
19/05/2015	00025405	Cancelled	Cancelled	\$ -
19/05/2015	00025406	Cancelled	Cancelled	\$ -
19/05/2015	00025407	Cancelled	Cancelled	\$ -
19/05/2015	00025408	Water Corporation	Drinking Tap - Marine Pde - 4 Mar - 1 May 15	\$ 1,288.22
19/05/2015	00025409	Water Corporation	Drinking Tap - 1 Marine Pde - 4 Mar - 1 May 15	\$ 3,616.13
19/05/2015	00025410	Water Corporation	Beach Facilities - Marine Pde - 4 Mar - 1 May 15	\$ 1,662.28
19/05/2015	00025411	N J Angliss	Overpayment Refund	\$ 1,256.98
19/05/2015	00025412	E Tinsley	Refund - War Memorial Hall	\$ 200.00
21/05/2015	00025413	Colonial First State Rollover	Superannuation contributions	\$ 218.62
21/05/2015	00025414	ING DIRECT Superannuation Fund	Superannuation contributions	\$ 66.29
21/05/2015	00025415	WA Super	Superannuation contributions	\$ 17,854.50
26/05/2015	00025416	BCITF	BCITF April 2015	\$ 2,352.27
26/05/2015	00025417	Building Commission	BSL July 2014	\$ 11,387.47
26/05/2015	00025418	City of Subiaco	Contribution to Long Service	\$ 5,145.75
26/05/2015	00025419	Fines Enforcement Registry	Agency fees	\$ 14,865.40
26/05/2015	00025420	Landgate	Aerial Imagery	\$ 510.40
26/05/2015	00025421	Smart Parking Ltd	Handheld Maintenance	\$ 2,727.00
26/05/2015	00025422	Synergy	Power Supply - 8 Stack Street	\$ 352.95
26/05/2015	00025423	The Bush Stop	Flowers	\$ 350.00
26/05/2015	00025424	Water Corporation	Water charges	\$ 850.81
27/05/2015	00025425	J A Wishaw	Overpayment Refund	\$ 311.60
27/05/2015	00025426	D M Newman	Overpayment Refund	\$ 1,875.48
27/05/2015	00025427	H I Burke	Overpayment Refund	\$ 358.92
27/05/2015	00025428	Y E Wealand	Overpayment Refund	\$ 358.92
27/05/2015	00025429	D A Azzopardi	Overpayment Refund	\$ 1,000.00
27/05/2015	00025430	S Mawer	Bond Refund	\$ 140.00
27/05/2015	00025431	Angelita Bonetti	Refund Bond and Key Deposit - Lesser Hal	\$ 200.00
27/05/2015	00025432	Mrs Anne P Whyte	Refund Bond - Photo Shoot	\$ 100.00
27/05/2015	00025433	I Kirkaldy	Refund	\$ 100.00
27/05/2015	00025434	Omega Homes Pty Ltd	Bond Refund - 218 Broome Street	\$ 1,000.00
1/05/2015	870.1231-01	Guardian Tactile Systems	Bond Refund - 27 Margaret Street	\$ 1,500.00
1/05/2015	870.1871-01	All-Firm Pty Ltd T/A Affirmative Group	Install Tactile Pavers - Eric St	\$ 1,728.23
1/05/2015	870.1876-01	Whatever With Attitude Pty Ltd	Installation of Paving - Napoleon St	\$ 36,863.64
			Catering services	\$ 870.00

<u>Date</u>	<u>Payment Reference</u>	<u>Payee</u>	<u>Description</u>	<u>Amount</u>
1/05/2015	870.35-01	Cottesloe IGA	Milk Supply	\$ 13.68
5/05/2015	871.1020-01	By Word of Mouth Pty Ltd	Anzac Day Gunfire Breakfast for 300 Guests	\$ 6,174.85
5/05/2015	871.1626-01	Young's Plumbing Service Pty Ltd	Amend low pressure at beach showers	\$ 151.80
5/05/2015	871.1663-01	General Lighting Services WA	Test/repair emergency /exit lighting system	\$ 1,113.00
5/05/2015	871.1889-01	Slattery Australia Pty Ltd	Professional services	\$ 6,050.00
5/05/2015	871.210-01	Hays Specialist Recruitment (Aust.)	Temporary staff	\$ 908.68
5/05/2015	871.35-01	Cottesloe IGA	Milk Supply	\$ 87.51
5/05/2015	871.38-01	Veolia Environmental Services	Exchange skip	\$ 451.00
5/05/2015	871.48-01	Cannon Hygiene Australia Pty Ltd	Hygiene services	\$ 566.08
5/05/2015	871.79-01	Perth Irrigation Centre	Irrigation hardware supplies	\$ 59.80
5/05/2015	871.85-01	Western Metropolitan Regional Council	Waste disposal	\$ 11,594.96
5/05/2015	871.88-01	Managed IT Pty Ltd	IT services	\$ 11,338.56
5/05/2015	871.891-01	Austral Mercantile Collections Pty	Debt recovery services	\$ 172.19
6/05/2015	872.3-01	Department of Human Services	Payroll deduction	\$ 214.80
6/05/2015	872.5-01	LGRCEU	Payroll deduction	\$ 174.60
7/05/2015	873.1098-01	National Australia Bank Business Visa	Membership fees	\$ 846.38
12/05/2015	874.1098-01	National Australia Bank Business Visa	Bank fees	\$ 8.27
14/05/2015	875.101-01	Airflow Maintenance Company	Repair leaking pump	\$ 481.02
14/05/2015	875.1042-01	Recall Information Management Pty Ltd	Secure bin shredding	\$ 131.45
14/05/2015	875.111-01	Murphy's Electrical Company	Inspect & repair floodlight	\$ 107.80
14/05/2015	875.1185-01	Waterlogic Australia Pty Ltd	Rental & maintenance fee	\$ 207.90
14/05/2015	875.122-01	Jackson McDonald Lawyers	Legal advice	\$ 1,703.63
14/05/2015	875.1239-01	One Fire Group	Inspection - fire services	\$ 302.50
14/05/2015	875.128-01	Total Packaging (WA) Pty Ltd	Supply & delivery - dog waste bags	\$ 4,026.88
14/05/2015	875.132-01	Landfill Gas & Power Pty Ltd	Black power supply	\$ 2,939.70
14/05/2015	875.1361-01	Department of Transport	Vehicle Search Fees	\$ 2,435.35
14/05/2015	875.139-01	Australia Post	Mail collection services	\$ 1,667.22
14/05/2015	875.1450-01	Bin Bombs	10 x 20kg bags of absorbent clay	\$ 203.50
14/05/2015	875.146-01	Bring Couriers	Delivery of agendas & minutes	\$ 38.76
14/05/2015	875.1560-01	Astro Synthetic Turf Pty Ltd	Repairs soft fall	\$ 4,042.50
14/05/2015	875.1577-01	Perth Asbestos Removal Company Pty	Removal of asbestos	\$ 1,897.50
14/05/2015	875.1582-01	Snap Claremont	Photocopying/scanning	\$ 8.00
14/05/2015	875.1583-01	Information Proficiency	Trim support	\$ 990.00
14/05/2015	875.1614-01	Challenger Institute of Technology	Course fees	\$ 1,112.40
14/05/2015	875.1630-01	P Miller	Cement additive	\$ 27.15
14/05/2015	875.1645-01	Swissclinical Australia Pty Ltd	Dry-cleaning from various council meetings	\$ 472.80

<u>Date</u>	<u>Payment Reference</u>	<u>Payee</u>	<u>Description</u>	<u>Amount</u>
14/05/2015	875.1653-01	Chamberlain Dean Pty Ltd T/A Prime Recruitment	Depot temporary staff	\$ 1,439.36
14/05/2015	875.1742-01	Onsite Rentals Pty Ltd	Portable toilets	\$ 1,298.00
14/05/2015	875.1827-01	Culture + Context	Heritage Advice	\$ 6,021.40
14/05/2015	875.1841-01	BMT Oceanica PTY LTD	Coastal monitoring	\$ 8,963.35
14/05/2015	875.1848-01	Venturecorp Pty Ltd	Hire of RTK Unit	\$ 440.00
14/05/2015	875.1858-01	CLAW Environmental	Removal - Unrepairable Recycling Waste Bins	\$ 165.00
14/05/2015	875.1871-01	All-Firm Pty Ltd T/A Affirmative Group	Installation of street furniture	\$ 5,918.00
14/05/2015	875.1879-01	Domain Catering	Catering services	\$ 1,120.00
14/05/2015	875.1880-01	High Steel Buildings Pty Ltd	Supply/erect galvanised shed	\$ 5,768.00
14/05/2015	875.1885-01	Agency Holdings Pty Ltd	Town of Cottesloe Flag - Anzac Day	\$ 242.00
14/05/2015	875.1894-01	R Kolb	Registration Fee	\$ 70.00
14/05/2015	875.1895-01	S MacArthur	Registration Fee	\$ 35.00
14/05/2015	875.1896-01	K W P Hughes	Rates refund	\$ 792.94
14/05/2015	875.19-01	McLeod's Barristers & Solicitors	Legal services	\$ 256.58
14/05/2015	875.210-01	Hays Specialist Recruitment (Aust.)	Temporary staff	\$ 1,250.66
14/05/2015	875.26-01	Greenway Enterprises	Miscellaneous gardening supplies	\$ 2,142.92
14/05/2015	875.35-01	Cottesloe IGA	Milk supply	\$ 27.42
14/05/2015	875.37-01	Staples Australia Pty Ltd	Stationery	\$ 670.20
14/05/2015	875.46-01	Professional Tree Surgeons	Tree pruning	\$ 1,287.00
14/05/2015	875.510-01	Complete Pest Management Services	Caterpillar treatment	\$ 315.00
14/05/2015	875.55-01	Shire of Peppermint Grove	Library contribution	\$ 166,527.90
14/05/2015	875.580-01	St John Ambulance Australia (WA) Inc	First aid event services for Anzac Day	\$ 266.46
14/05/2015	875.62-01	Bunning's Group Ltd	Hardware supplies	\$ 126.11
14/05/2015	875.645-01	Cobblestone Concrete	Installation of footpaths	\$ 70,210.71
14/05/2015	875.69-01	Kayes Carpentry Service	Supply/install eaves lining	\$ 4,279.00
14/05/2015	875.695-01	Cardno (WA) Pty Ltd	Asset management & structural assessment services	\$ 26,950.00
14/05/2015	875.75-01	Safety Zone Australia Pty Ltd	Safetywear	\$ 187.00
14/05/2015	875.802-01	West Coast Shade	Remove shade sails	\$ 3,025.00
14/05/2015	875.85-01	Western Metropolitan Regional Council	Waste disposal	\$ 11,849.43
14/05/2015	875.89-01	Major Motors Pty Ltd	Truck service	\$ 188.10
14/05/2015	875.91-01	Claremont Asphalt	Waste removal	\$ 2,640.00
14/05/2015	875.94-01	Insight CCS Pty Ltd	Answering phone service	\$ 554.84
14/05/2015	875.955-01	Minuteman Press	Volunteers Sundowner 2015 - invitations	\$ 290.58
14/05/2015	875.988-01	Securex Pty Ltd	Diagnose & Repair fault to titan security software	\$ 155.00
19/05/2015	876.101-01	Airflow Maintenance Company	Diagnose/repair fault in air-conditioning	\$ 517.35
19/05/2015	876.1020-01	By Word of Mouth Pty Ltd	Catering services	\$ 5,542.35

<u>Date</u>	<u>Payment Reference</u>	<u>Payee</u>	<u>Description</u>	<u>Amount</u>
19/05/2015	876.103-01	Benara Nurseries	Supply & delivery - various trees	\$ 1,819.40
19/05/2015	876.1093-01	DORMA Australia Pty Ltd	Replace backup battery	\$ 381.81
19/05/2015	876.1133-01	Lock, Stock & Farrell Locksmith Pty	Keys	\$ 364.50
19/05/2015	876.1135-01	Lamp Replacements Australia Pty Ltd	Replacement globes	\$ 221.10
19/05/2015	876.1653-01	Chamberlain Dean Pty Ltd T/A Prime Recruitment	Temporary staff	\$ 1,826.06
19/05/2015	876.1871-01	All-Firm Pty Ltd T/A Affirmative Group	Remove/lay brick paving cartage & sealing	\$ 25,369.20
19/05/2015	876.1886-01	Sandie Holdings Pty Ltd T/A Lock Joint Australia	Supplies - footpath and cycle ways repairs	\$ 819.50
19/05/2015	876.1891-01	WJE Bannister	Musician for Volunteers Sundowner event	\$ 300.00
19/05/2015	876.1893-01	Ideal Office Furniture Pty Ltd	Lectern for Council Chambers	\$ 388.50
19/05/2015	876.19-01	McLeod's Barristers & Solicitors	Legal advice	\$ 255.47
19/05/2015	876.211-01	Apace Aid (Inc)	Plant supplies	\$ 2,171.40
19/05/2015	876.29-01	Fuji Xerox Australia Pty Ltd	Printing	\$ 248.13
19/05/2015	876.35-01	Cottesloe IGA	Milk supply	\$ 34.29
19/05/2015	876.37-01	Staples Australia Pty Ltd	Stationery	\$ 82.97
19/05/2015	876.540-01	Kerb Doctor	Install kerbing	\$ 770.00
19/05/2015	876.563-01	Kelyn Training Services	Course fees	\$ 302.00
19/05/2015	876.593-01	Australia Post	Reply Paid Annual Fee	\$ 95.00
19/05/2015	876.62-01	Bunning's Group Ltd	Hardware supplies	\$ 97.19
19/05/2015	876.685-01	E I Drewett	Reimbursement	\$ 295.40
19/05/2015	876.79-01	Perth Irrigation Centre	Irrigation supplies	\$ 216.58
19/05/2015	876.84-01	West Australian Local Government Association	Advertising	\$ 684.49
19/05/2015	876.88-01	Managed IT Pty Ltd	IT services	\$ 468.93
19/05/2015	876.91-01	Claremont Asphalt	Road repairs	\$ 660.00
20/05/2015	877.1582-01	Snap Claremont	Photocopying/scanning	\$ 24.00
20/05/2015	877.179-01	Instant Scaffolds & Access Equipment	Scaffold hire and labour	\$ 2,453.00
20/05/2015	877.210-01	Hays Specialist Recruitment (Aust.)	Temporary staff	\$ 1,594.58
20/05/2015	877.49-01	Charles Service Company	Cleaning services	\$ 5,144.28
20/05/2015	877.544-01	B M Pember	IT services	\$ 5,720.00
20/05/2015	877.982-01	Titan Ford	Vehicle service	\$ 956.00
21/05/2015	878.3-01	Department of Human Services	Payroll deduction	\$ 494.03
21/05/2015	878.5-01	LGRCEU	Payroll deduction	\$ 174.60
26/05/2015	879.1099-01	O'Connor Lawnmower & Chainsaw Centre	Hardware supplies	\$ 63.20
26/05/2015	879.1121-01	Fast Finishing Services	Binding minutes& agendas	\$ 191.40
26/05/2015	879.114-01	Creation Landscape Supplies	Lawn sand	\$ 667.00
26/05/2015	879.1257-01	Bad Backs Store	Sit stand desks	\$ 2,325.00
26/05/2015	879.1377-01	Harvey Norman AV/IT Superstore	Stationery	\$ 195.00

<u>Date</u>	<u>Payment Reference</u>	<u>Payee</u>	<u>Description</u>	<u>Amount</u>
26/05/2015	879.1428-01	Subaru Wangara	Vehicle service	\$ 420.00
26/05/2015	879.1522-01	Prospero Civil & Cadd Designs	Project management	\$ 5,643.00
26/05/2015	879.1558-01	Quality Press	Brochures - May 2015 bulk waste verge collection	\$ 843.70
26/05/2015	879.1576-01	Edinger Real Estate	Rent & variable outgoings	\$ 16,840.19
26/05/2015	879.1582-01	Snap Claremont	Photocopying/scanning	\$ 30.45
26/05/2015	879.1583-01	Information Proficiency	Records management	\$ 178.75
26/05/2015	879.1626-01	Young's Plumbing Service Pty Ltd	Plumbing services	\$ 1,687.99
26/05/2015	879.1653-01	Chamberlain Dean Pty Ltd T/A Prime Recruitment	Temporary staff	\$ 1,439.36
26/05/2015	879.1685-01	Pacific Hydro Retail Pty Ltd	Bulk purchase green power	\$ 4,400.00
26/05/2015	879.17-01	Post Newspaper Pty Ltd	Advertising/publishing services	\$ 1,430.00
26/05/2015	879.1714-01	Jones Lange LaSalle Advisory Service	Market valuation services	\$ 5,500.00
26/05/2015	879.1847-01	Liquorbarons	Catering services	\$ 820.61
26/05/2015	879.1892-01	LogoMe Pty Ltd	Corporate gifts	\$ 118.56
26/05/2015	879.1897-01	HONMAZ	Vehicle service	\$ 219.80
26/05/2015	879.20-01	Hillmack Sales (Australia) Pty Ltd	Concrete for footpath repairs	\$ 1,570.50
26/05/2015	879.205-01	Cottesloe News Delivery	Cottesloe news delivery	\$ 58.80
26/05/2015	879.210-01	Hays Specialist Recruitment (Aust.)	Temporary staff	\$ 1,594.58
26/05/2015	879.24-01	Iron Mountain Australia Pty Ltd	Offsite storage of records	\$ 130.65
26/05/2015	879.26-01	Greenway Enterprises	Gardening supplies	\$ 194.80
26/05/2015	879.32-01	D Darwin	Reimbursement	\$ 135.85
26/05/2015	879.35-01	Cottesloe IGA	Catering supplies	\$ 47.81
26/05/2015	879.38-01	Veolia Environmental Services	9.0 m3 general waste bin	\$ 451.00
26/05/2015	879.41-01	Baileys Fertilisers	Gardening services	\$ 1,614.80
26/05/2015	879.505-01	Melville Mazda	Vehicle service	\$ 335.45
26/05/2015	879.522-01	Dogs Refuge Home (WA) Incorporated	Pound fee	\$ 1,682.45
26/05/2015	879.526-01	Zipform Pty Ltd	8000 x DLX Re-Usable Envelopes	\$ 595.84
26/05/2015	879.62-01	Bunning's Group Ltd	Hardware supplies	\$ 130.97
26/05/2015	879.85-01	Western Metropolitan Regional Council	Waste disposal	\$ 33,044.50
26/05/2015	879.89-01	Major Motors Pty Ltd	Truck service	\$ 365.57
26/05/2015	879.998-01	Road Signs Australia Pty Ltd	Supply/deliver "Foulikes Lane" name plate	\$ 236.50
28/05/2015	880.1721-01	Business Fuel Cards Pty Ltd	Fuel expenses	\$ 6,096.19
28/05/2015	881.103-01	Benara Nurseries	Various trees	\$ 751.30
28/05/2015	881.1334-01	Down Under Stump Grinding Pty Ltd	Grinding of stumps	\$ 605.00
28/05/2015	881.1473-01	Eco Resources Pty Ltd	Waste removal	\$ 1,705.00
28/05/2015	881.1534-01	Preservation Services	Four Cottesloe historical projects	\$ 1,672.00
28/05/2015	881.1582-01	Snap Claremont	Photocopying/scanning	\$ 36.00

<u>Date</u>	<u>Payment Reference</u>	<u>Payee</u>	<u>Description</u>	<u>Amount</u>
28/05/2015	881.1831-01	Dainford Pty Ltd T/A The Blue Duck	Catering services	\$ 2,000.00
28/05/2015	881.1899-01	N Milan	Performance - Pioneers Day 2015	\$ 400.00
28/05/2015	881.200-01	Paint Industries Pty Ltd	Painting services	\$ 138.45
28/05/2015	881.35-01	Cottesloe IGA	Milk supply	\$ 18.32
28/05/2015	881.47-01	Collisters Electrical	Electrical services	\$ 520.30
28/05/2015	881.79-01	Perth Irrigation Centre	Hardware supplies	\$ 39.59
1/05/2015		National Australia Bank	Bank fees	\$ 93.98
1/05/2015		Commonwealth bank of Australia	Bank fees	\$ 68.93
6/05/2015		Town of Cottesloe Staff	Fortnightly payroll	\$ 110,756.31
15/05/2015		National Australia Bank	Bank fees	\$ 34.95
19/05/2015		National Australia Bank	Transfer to term deposit	\$ 196,876.00
20/05/2015		Town of Cottesloe Staff	Fortnightly payroll	\$ 82,606.98
21/05/2015		National Australia Bank	Bank fees	\$ 72.98
22/05/2015		Dishonoured item	Town planning fee	\$ 147.00
27/05/2015		National Australia Bank	Bank fees	\$ 5.00
29/05/2015		National Australia Bank	Bank fees	\$ 17.66
29/05/2015		National Australia Bank	Bank fees	\$ 39.94
29/05/2015		National Australia Bank	Bank fees	\$ 231.61
29/05/2015		National Australia Bank	Bank fees	\$ 245.08
TOTAL				\$ 1,050,081.80

Pursuant to Regulation of 13(4) of the local Government (Financial Management) Regulations the total of all other outstanding accounts for payment as at the date of this payment listing being prepared is \$399,001.85

I hereby certify that the above schedule of accounts totalling \$1,050,081.80 as submitted to the Works & Corporate Services Committee meeting held on 16 June 2015

Signed (Chairperson of the Works & Corporate Services Committee)

TOWN OF COTTESLOE
RESERVES - CASH BACKED INVESTMENTS
FOR THE PERIOD ENDING 31 MAY 2015

	2014-2015 ACTUAL \$	2014-2015 BUDGET \$
1 Area Improvement		
Purpose: To fund the cost of improving facilities within the Municipality.		
Opening Balance	34	-
Transfer to Reserves	0	-
Transfer from Reserves	-	-
	34	-
2 Waste Management Reserve		
Purpose: To fund the improvement, replacement and expansion of waste management plant, equipment, facilities and services.		
Opening Balance	-	10,053
Transfer to Reserves	0	2,627
Transfer from Reserves	-	-
Closing Balance	0	12,680
3 Parking Reserve		
Purpose: To set aside funds from developers for the development of parking facilities		
Opening Balance	10,024	14,845
Transfer to Reserves	240	520
Transfer from Reserves	-	-
Closing Balance	10,264	15,365
4 Leave Reserve		
Purpose: To set asides funds to assist with the funding of unexpected employee entitlements		
Opening Balance	175,249	174,514
Transfer to Reserves	4,181	6,108
Transfer from Reserves	-	-
Closing Balance	179,430	180,622
5 Civic Centre Reserve		
Purpose: To fund the cost of upgrading the civic centre.		
Opening Balance	342	1,410
Transfer to Reserves	30,076	42
Transfer from Reserves	-	(1,452)
Closing Balance	30,418	-
6 Property Reserve		
Purpose: To contribute towards future property construction/renewal.		
Opening Balance	378,993	310,441
Transfer to Reserves	9,043	13,410
Transfer from Reserves	-	-
Closing Balance	388,036	323,851

TOWN OF COTTESLOE
RESERVES - CASH BACKED INVESTMENTS
FOR THE PERIOD ENDING 31 MAY 2015

	2014-2015 ACTUAL \$	2014-2015 BUDGET \$
7 Infrastructure Reserve		
Purpose: To contribute towards future infrastructure construction/renewal.		
Opening Balance	298,439	349,114
Transfer to Reserves	72,270	12,219
Transfer from Reserves	-	-
Closing Balance	<u>370,709</u>	<u>361,333</u>
8 Unspent Grants/Funds Reserve		
Purpose: To account for unspent grants/funds at year end		
Opening Balance	258	-
Transfer to Reserves	6	-
Transfer from Reserves	-	-
Closing Balance	<u>264</u>	<u>-</u>
9 Legal Reserve		
Purpose: To provide funds to provide for legal expenses		
Opening Balance	65,481	65,211
Transfer to Reserves	1,502	2,282
Transfer from Reserves	-	-
Closing Balance	<u>67,043</u>	<u>67,493</u>
10 Parking Facilities Reserve		
Purpose: To provide funds to provide for parking facilities		
Opening Balance	150,303	151,132
Transfer to Reserves	3,586	5,290
Transfer from Reserves	-	-
Closing Balance	<u>153,889</u>	<u>156,422</u>
11 Sustainability Reserve		
Purpose: To fund new or enhance existing Sustainability initiatives within the Town of Cottesloe		
Opening Balance	20,382	19,782
Transfer to Reserves	8,003	8,192
Transfer from Reserves	-	(5,000)
	<u>28,385</u>	<u>22,974</u>
11 Depot Funds Reserve		
Purpose: To fund the improvement of infrastructure within the suburb of Cottesloe		
Opening Balance	-	-
Transfer to Reserves	8,668,806	8,310,000
Transfer from Reserves	(318,002)	-
	<u>8,350,804</u>	<u>8,310,000</u>
Sub Total	<u>9,579,277</u>	<u>9,450,740</u>

TOWN OF COTTESLOE
RESERVES - CASH BACKED INVESTMENTS
FOR THE PERIOD ENDING 31 MAY 2015

	2014-2015 ACTUAL \$	2014-2015 BUDGET \$
12 Combined Library Reserve		
Purpose: To fund improvements at the Library		
Opening Balance	83,441	-
Transfer to Reserves	-	-
Transfer from Reserves	-	-
	<u>83,441</u>	<u>-</u>
TOTAL RESERVES	<u><u>9,662,718</u></u>	<u><u>9,450,740</u></u>

TOWN OF COTTESLOE

INVESTMENTS

SCHEDULE OF INVESTMENTS HELD AS AT 31 MAY 2015

BANK	RATE %	TERM	MATURITY DATE	MUNICIPAL INVESTMENTS	RESERVE FUND	COMMENTS
				\$		
NATIONAL AUSTRALIA BANK	3.00%	92 DAYS	30-Jun-15	5,591.46		COTTESLOE PRIMARY SCHOOL
NATIONAL AUSTRALIA BANK	3.00%	92 DAYS	30-Jun-15	5,533.29		NORTH COTT PRIMARY SCHOOL
NATIONAL AUSTRALIA BANK	2.99%	92 DAYS	30-Jun-15	458,798.48		TERM INVESTMENT
WESTPAC	2.92%	90 DAYS	13-Jul-15	484,871.39		TERM INVESTMENT
NATIONAL AUSTRALIA BANK	2.30%	30 DAYS	12-Jun-15	512,555.61		TERM INVESTMENT
COMMONWEALTH BANK OF AUSTRALIA	2.93%	97 DAYS	30-Jun-15	483,211.41		TERM INVESTMENT
WESTPAC	2.80%	92 DAYS	30-Jun-15		79,396.11	RESERVE FUND INVESTMENTS
BANKWEST	3.00%	105 DAYS	30-Jun-15		159,191.80	RESERVE FUND INVESTMENTS
NATIONAL AUSTRALIA BANK	2.45%	90 DAYS	12-Aug-15		378,783.60	RESERVE FUND INVESTMENTS
BANKWEST	2.80%	90 DAYS	6-Jul-15		1,804,638.08	RESERVE FUND INVESTMENTS
BANKWEST	2.80%	90 DAYS	6-Jul-15		1,804,638.08	RESERVE FUND INVESTMENTS
NATIONAL AUSTRALIA BANK	3.10%	89 DAYS	3-Jun-15		1,800,000.00	RESERVE FUND INVESTMENTS
WESTPAC	3.09%	91 DAYS	5-Jun-15		1,900,000.00	RESERVE FUND INVESTMENTS
COMMONWEALTH BANK OF AUSTRALIA	2.90%	92 DAYS	8-Jul-15		1,453,253.56	RESERVE FUND INVESTMENTS
NATIONAL AUSTRALIA BANK	2.99%	89 DAYS	30-Jun-15		102,500.00	RESERVE FUND INVESTMENTS
NATIONAL AUSTRALIA BANK	2.25%	30 DAYS	19-Jun-15		196,876.00	RESERVE FUND INVESTMENTS
TOTAL				\$1,956,561.64	\$9,579,277.23	

BANK	\$	%
NATIONAL AUSTRALIA BANK	\$3,460,638.44	30.00
WESTPAC BANKING CORPORATION	\$2,364,267.50	20.49
BANKWEST	\$3,768,467.96	32.67
COMMONWEALTH BANK OF AUSTRALIA	\$1,942,464.97	16.84
TOTAL	\$11,535,838.87	100.00

TOWN OF COTTESLOE

LOANS

SCHEDULE OF LOANS HELD AS AT 31 MAY 2015

BANK	REF NO.	RATE %	PERIOD	MATURITY DATE	BALANCE OWING	LAST INSTALMENT DATE	NEXT INSTALMENT DATE	CURRENT LIABILITY	NON-CURRENT LIABILITY	COMMENTS
WA TREASURY	105	6.22%	15 YEARS	6-Oct-23	\$256,620.19	6-Apr-15	6-Oct-15	\$0.00	\$256,620.19	SEA VIEW GOLF CLUB
WA TREASURY	106	5.25%	10 YEARS	3-Apr-19	\$740,674.67	3-Apr-15	5-Oct-15	\$0.00	\$740,674.67	CAPITAL PROJECT - CIVIC CENTRE
WA TREASURY	107	6.51%	20 YEARS	16-Sep-29	\$4,150,077.15	16-Mar-15	16-Sep-15	\$0.00	\$4,150,077.15	CAPITAL PROJECT - JOINT LIBRARY
					<u>\$5,147,372.01</u>			<u>\$0.00</u>	<u>\$5,147,372.01</u>	
LOANS TO OTHER ENTITIES										
LOANS FOR TOC										
					\$256,620.19			\$0.00	\$256,620.19	
					\$4,890,751.82			\$0.00	\$4,890,751.82	
					<u>\$5,147,372.01</u>			<u>\$0.00</u>	<u>\$5,147,372.01</u>	

TOWN OF COTTESLOE

SUNDRY DEBTORS REPORT AS AT 31 MAY 2015

<u>Debtor Number</u>	<u>Nature Of Debt</u>	<u>3+ Months</u>	<u>2+ Months</u>	<u>1+ Month</u>	<u>Current</u>	<u>Balance</u>	<u>Status</u>
311	Lease fees etc	\$27,849.01	\$0.00	\$3,218.28	\$0.00	\$31,067.29	Statement sent
403	Venue hire	\$6,445.00	\$0.00	\$5,020.00	\$1,870.00	\$13,335.00	Statement sent
174	Reimbursement	\$5,923.50	\$0.00	\$0.00	\$0.00	\$5,923.50	Statement sent
115	Contribution	\$5,000.00	\$0.00	\$0.00	\$0.00	\$5,000.00	Agreement
12	Waste collection services	\$3,078.40	\$0.00	\$1,539.20	\$0.00	\$4,617.60	Statement sent
440	Waste collection services	\$2,498.60	\$0.00	\$1,249.30	\$0.00	\$3,747.90	Statement sent
498	Reimbursement	\$1,311.20	\$0.00	\$0.00	\$0.00	\$1,311.20	Debt recovery commenced
293	Venue hire	\$950.00	\$0.00	\$0.00	\$0.00	\$950.00	Debt recovery commenced
491	Waste collection services	\$910.00	\$0.00	\$455.00	\$0.00	\$1,365.00	Statement sent
538	Removal of waste	\$737.00	\$0.00	\$0.00	\$0.00	\$737.00	Statement sent
550	Health license fees etc	\$245.57	\$1,874.65	\$488.40	\$0.00	\$2,608.62	Statement sent
530	Waste collection services	\$225.00	\$0.00	\$0.00	\$0.00	\$225.00	Statement sent
507	Waste collection services	\$159.90	\$0.00	\$159.90	\$0.00	\$319.80	Statement sent
74	Waste collection services	\$134.21	\$0.00	\$0.00	\$0.00	\$134.21	Statement sent
123	Waste collection services	\$124.93	\$0.00	\$124.93	\$0.00	\$249.86	Statement sent
106	Waste collection services	\$6.92	\$0.00	\$0.00	\$0.00	\$6.92	Statement sent
245	Waste collection services	\$0.00	\$0.00	\$1,069.38	\$0.00	\$1,069.38	Current
44	Waste collection services	\$0.00	\$0.00	\$799.50	\$0.00	\$799.50	Current
479	Waste collection services	\$0.00	\$0.00	\$749.58	\$0.00	\$749.58	Current
133	Waste collection services	\$0.00	\$0.00	\$544.96	\$0.00	\$544.96	Current
26	Waste collection services	\$0.00	\$0.00	\$539.76	\$0.00	\$539.76	Current
55	Waste collection services	\$0.00	\$0.00	\$499.72	\$0.00	\$499.72	Current
444	Waste collection services	\$0.00	\$0.00	\$455.00	\$0.00	\$455.00	Current
448	Waste collection services	\$0.00	\$0.00	\$356.70	\$0.00	\$356.70	Current
29	Waste collection services	\$0.00	\$0.00	\$269.88	\$0.00	\$269.88	Current
352	Waste collection services	\$0.00	\$0.00	\$249.86	\$0.00	\$249.86	Current
514	Waste collection services	\$0.00	\$0.00	\$227.50	\$0.00	\$227.50	Current
453	Waste collection services	\$0.00	\$0.00	\$214.89	\$0.00	\$214.89	Current
164	Waste collection services	\$0.00	\$0.00	\$159.90	\$0.00	\$159.90	Current
299	Waste collection services	\$0.00	\$0.00	\$159.90	\$0.00	\$159.90	Current
347	Waste collection services	\$0.00	\$0.00	\$89.96	\$0.00	\$89.96	Current

TOWN OF COTTESLOE

SUNDRY DEBTORS REPORT AS AT 31 MAY 2015

<u>Debtor Number</u>	<u>Nature Of Debt</u>	<u>3+ Months</u>	<u>2+ Months</u>	<u>1+ Month</u>	<u>Current</u>	<u>Balance</u>	<u>Status</u>
351	Waste collection services	\$0.00	\$0.00	\$89.96	\$0.00	\$89.96	Current
496	Waste collection services	\$0.00	\$0.00	\$89.96	\$0.00	\$89.96	Current
551	Waste collection services	\$0.00	\$0.00	\$89.96	\$0.00	\$89.96	Current
119	Waste collection services	\$0.00	\$0.00	\$89.96	\$0.00	\$89.96	Current
261	Waste collection services	\$0.00	\$0.00	\$89.96	\$0.00	\$89.96	Current
481	Waste collection services	\$0.00	\$0.00	\$48.05	\$0.00	\$48.05	Current
34	Reimbursement	\$0.00	\$0.00	\$0.00	\$3,897.84	\$3,897.84	Current
566	Reimbursement	\$0.00	\$0.00	\$0.00	\$2,455.20	\$2,455.20	Current
45	Reimbursement	\$0.00	\$0.00	\$0.00	\$1,669.71	\$1,669.71	Current
43	Reimbursement	\$0.00	\$0.00	\$0.00	\$997.96	\$997.96	Current
101	Overpayment	\$0.00	\$0.00	\$0.00	-\$214.89	-\$214.89	Overpayment
90	Overpayment	-\$81.25	\$0.00	\$0.00	\$0.00	-\$81.25	Overpayment
Sub Total		\$55,517.99	\$1,874.65	\$19,139.35	\$10,675.82	\$87,207.81	
115	Loan Debtor etc	\$54,777.00	\$0.00	\$0.00	\$0.00	\$54,777.00	Long term agreement not yet due
Sub Total		\$54,777.00	\$0.00	\$0.00	\$0.00	\$54,777.00	
TOTAL		\$110,294.99	\$1,874.65	\$19,139.35	\$10,675.82	\$141,984.81	

Rates and Charges Analysis

For Financial Year 2015 Period 10, as at 2/06/2015



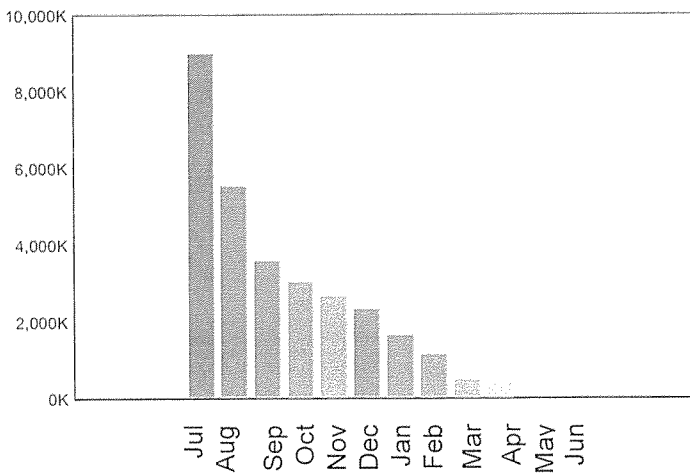
Amounts Levied and Outstanding

<u>Rate or Charge Type</u>	<u>Amount Levied This Year</u>	<u>Total Balance Outstanding</u>
GRV General Rate	8,902,429.95	322,797.08
Additional Bin	83,853.53	959.36
Credit Balances	0.00	-61,383.77
Swimming Pool	8,153.75	271.25
ESL Category 1	1,317,089.98	45,502.03
ESL Category 5	0.00	4.05
Instalment Fees	15,958.80	129.60
Instalment PreInterest	34,814.53	185.85
	10,362,300.54	308,465.45

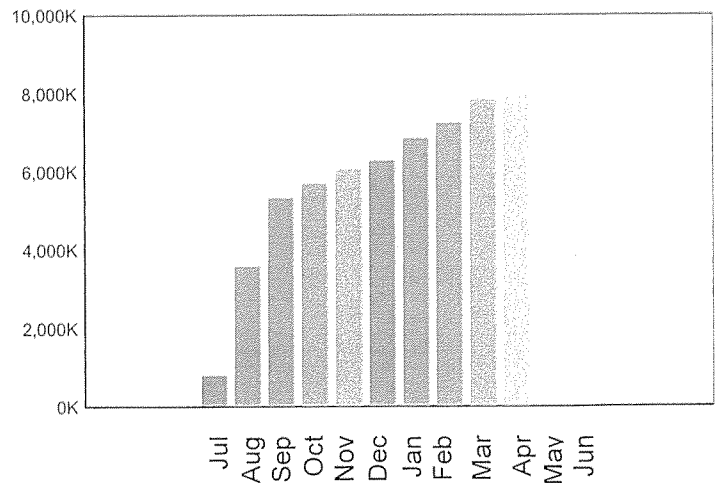
Analysis of Outstanding Balance

<u>Bfwd At 1 July</u>	<u>Levied YTD</u>	<u>Rebated</u>	<u>Receipted</u>	<u>Other Trans</u>	<u>Balance</u>
260,702.06	10,362,300.54	-593,775.35	-9,754,340.55	33,578.75	308,465.45
<u>Current</u>	<u>Arrears</u>	<u>Interest</u>	<u>Legal</u>	<u>Deferred</u>	<u>Balance</u>
67,993.24	32,065.96	19,027.91	4,084.40	185,293.94	308,465.45

Total Balance Outstanding By Month



YTD Collections By Month



Analysis of Assessments

Number of assessments	3,822
Number of assessments paid in full	3,290
Number of assessments with a balance outstanding	604
Number of assessments with arrears	33
Number of assessments on instalments	1,303
Number of assessments with pensioners or seniors	933
Number of assessments with deferred rates	26
Number of assessments with no payment yet	53

TOWN OF COTTESLOE

BUDGET AMENDMENTS - SUMMARY

FOR THE PERIOD ENDED 1 JULY 2014 TO 31 MAY 2015

<u>GL Account Code</u>	<u>Description</u>	<u>Council Resolution & Date</u>	<u>Classification</u>	<u>Value of Budget Amendment</u>	<u>Funding Arrangement</u>
Various NEW	Payout Existing Loan No 107	10.5.1 August 2014	Reduction of Loans	\$ 4,318,204	Payout existing loans as per Depot Funds Strategy
Various NEW	Retaining Walls at the Beach	10.5.1 August 2014	Capital Expenditure	\$ 50,000	Restore retaining walls at the beach
Various NEW	Project Management Costs	10.5.1 August 2014	Capital Expenditure	\$ 70,000	Hire a project manager
Various NEW	Toilets Main Beach	10.5.1 August 2014	Capital Expenditure	\$ 1,025,000	Construction of toilet facilities
Various NEW	Town Centre Improvements	10.5.1 August 2014	Capital Expenditure	\$ 100,000	Town Centre Capital Improvements
Various NEW	June Black Dune Park	10.5.1 August 2014	Capital Expenditure	\$ 50,000	Improvements to the park
Various NEW	Lessor Hall	10.5.1 August 2014	Capital Expenditure	\$ 50,000	Improvements to the Hall
Various NEW	Shark Barrier	10.4.2 October 2014	Capital Expenditure	\$ 130,000	Installation, removal and maintenance of a shark barrier at Cottesloe beach
20202.30.50	Review/update of NAMP	10.4.7 October 2014	Operating Expenditure	\$ 18,000	Review and update of the Natural Areas Management Plan
3.4120.2.50	Remediation of Former Depot Site	9.1.1 November 2014 SM	Capital Expenditure	\$ 196,560	To be funded from the Depot Funds Reserve.
Various	Mid Year Budget Review	10.4.8 February 2015	Various		

TOWN OF COTTESLOE

CAPITAL WORKS PROGRAMME
FOR THE PERIOD ENDED 1 JULY 2014 TO 31 MAY 2015

	2014-2015 YTD ACTUAL \$	2014-2015 YTD BUDGET \$	2014-2015 BUDGET \$	Variances Budget to YTD Actual \$	Variances Budget to YTD Actual %
LAND DEVELOPMENT					
3.4120.2 Old Depot Site	256,584	0	0	256,584	100%
CARPARK CONSTRUCTION					
5.1171.2 Seaview Golf Course	74,845	0	0	74,845	100%
DRAINAGE CONSTRUCTION					
10.9000.2 Cottesloe various	43,319	18,462	20,150	24,857	57%
FOOTPATH CONSTRUCTION					
15.1030.2 Broome Street	20,129	22,550	22,550	(2,421)	(12%)
15.1058.2 Elizabeth Street	15,943	12,250	12,250	3,693	23%
15.1062.2 Federal Street	0	2,250	2,250	(2,250)	
15.1116.2 Lyons Street	46,495	42,350	42,350	4,145	9%
15.1126.2 Marine Parade	39,647	33,050	33,050	6,597	
15.1128.2 Marrion Street	5,975	7,250	7,250	(1,274)	(21%)
15.1166.2 Salisbury Street	18,514	17,250	17,250	1,264	
15.1204.2 Windsor Street	7,944	7,750	7,750	194	2%
15.9000.5 DSAC Capital Works	15,833	30,200	30,200	(14,367)	(91%)
15.9000.2 Bike Plan Works	8,070	50,350	50,350	(42,280)	(524%)

TOWN OF COTTESLOE

CAPITAL WORKS PROGRAMME
FOR THE PERIOD ENDED 1 JULY 2014 TO 31 MAY 2015

	2014-2015 YTD ACTUAL \$	2014-2015 YTD BUDGET \$	2014-2015 BUDGET \$	Variances Budget to YTD Actual \$	Variances Budget to YTD Actual %
IRRIGATION CONSTRUCTION					
20.9000.2 Cottesloe, various	6,120	28,644	30,800	(22,524)	(368%)
PARKS AND RESERVES CONSTRUCTION					
30.6120.2 John Black Dune Reserve	10,260	0	0	10,260	100%
30.9000.2 Playgrounds various	27,992	27,831	30,350	161	1%
30.9000.5 Cottesloe Natural Area Upgrade	11,370	14,671	16,000	(3,301)	(29%)
PROPERTY CONSTRUCTION					
35.1171.2 Seaview Golf Course Clubhouse	105,922	0	0	105,922	100%
35.4050.2 Civic Centre Building	6,797	0	0	6,797	
35.4052.2 Civic Centre Lesser Hall Stage 1	0	73,468	80,150	(73,468)	
35.4130.2 Indiana Tea Rooms	27,500	0	0	0	100%
35.4135.2 The Grove Library	2,806	0	0	0	100%
35.6030.2 Civic Centre Grounds Restoration	101,298	183,670	200,350	(82,372)	(81%)
LANEWAY CONSTRUCTION					
25.9000.2	77,079	72,700	72,700	4,379	6%

TOWN OF COTTESLOE

CAPITAL WORKS PROGRAMME
FOR THE PERIOD ENDED 1 JULY 2014 TO 31 MAY 2015

	2014-2015 YTD ACTUAL \$	2014-2015 YTD BUDGET \$	2014-2015 BUDGET \$	Variations Budget to YTD Actual \$	Variations Budget to YTD Actual %
ROAD CONSTRUCTION/ REHABILITATION					
40.1032.2	13,540	10,351	10,350	3,189	24%
40.1046.2	97,620	98,252	98,250	(632)	(1%)
40.1049.2	2,967	20,102	20,100	(17,135)	(578%)
40.1068.2	42,538	48,000	48,000	(5,462)	(13%)
40.1092.2	16,030	12,052	12,050	3,978	25%
40.1112.2	20,763	36,851	36,850	(16,088)	(77%)
40.1128.2	33,189	52,750	52,750	(19,561)	(59%)
40.1148.2	26,484	22,252	22,250	4,232	16%
BLACKSPOT CONTRUCTION					
41.1048.2	17,427	0	0	17,427	100%
41.9000.2	32,487	0	0		
STREETSCAPE INFRASTRUCTURE					
42.1176.2	0	18,323	20,000	(18,323)	
42.6080.2	0	27,494	30,000	(27,494)	
42.8999.2	475,178	330,001	360,000	145,177	31%
42.9000.2	13,307	45,828	50,000	(32,521)	
MISCELLANEOUS INFRASTRUCTURE					
43.1171.2	41,443	0	0	41,443	
43.6080.2	14,132	0	0	14,132	
43.9000.2.57	71,715	70,000	70,000	1,715	

TOWN OF COTTESLOE

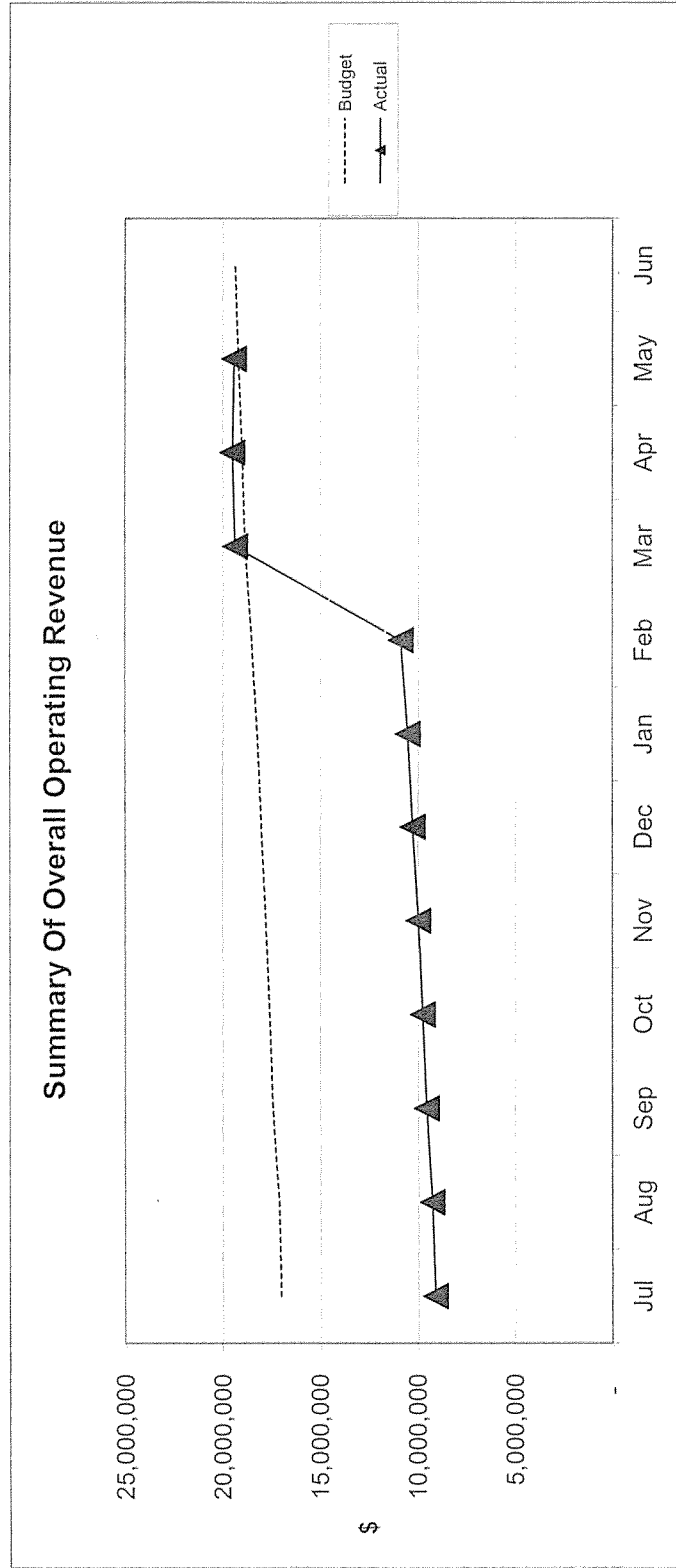
CAPITAL WORKS PROGRAMME
FOR THE PERIOD ENDED 1 JULY 2014 TO 31 MAY 2015

	2014-2015 YTD ACTUAL	2014-2015 YTD BUDGET	2014-2015 BUDGET	Variances Budget to YTD Actual	Variances Budget to YTD Actual
	\$	\$	\$	\$	%
PLANT & VEHICLES					
47.9000.2.57	36,000	36,000	36,000	8	0%
47.9000.2.57	35,413	36,000	36,000	(587)	(2%)
47.9000.2.57	C	36,000	36,000	(36,000)	
47.9000.2.57	C	35,000	35,000	(35,000)	
47.9000.2.57	69,396	60,000	60,000	9,396	14%
47.9000.2.57	86,207	90,000	90,000	(3,793)	(4%)
47.9000.2.57	24,550	25,000	25,000	(450)	(2%)
47.9000.2.57	6,053	8,500	8,500	(2,447)	(40%)
47.9000.2.57	2,472	2,400	2,400	72	3%
47.9000.2.57	1,040	1,600	1,600	(560)	(54%)
47.9000.2.57	1,040	3,200	3,200	(2,160)	(208%)
47.9000.2.57	3,102	3,600	3,600	(498)	(16%)
47.9000.2.57	2,120	2,400	2,400	(280)	(13%)
47.9000.2.57	1,955	0	0	0	100%
47.9000.2.57	6,200	0	0	0	100%
IT, OFFICE EQUIPMENT & FURNITURE					
49.9000.2.57	0	3,500	3,818	(3,500)	
49.9000.2.57	0	2,600	2,836	(2,600)	
49.9000.2.57	0	27,500	30,000	(27,500)	
49.9000.2.50	9,000	0	0	0	100%
TOTAL	2,133,820	1,810,252	1,882,704	243,619	15%

TOWN OF COTTESLOE

GRAPHICAL SUMMARY OF REVENUE, EXPENDITURE AND NET POSITION FOR 2014 - 2015

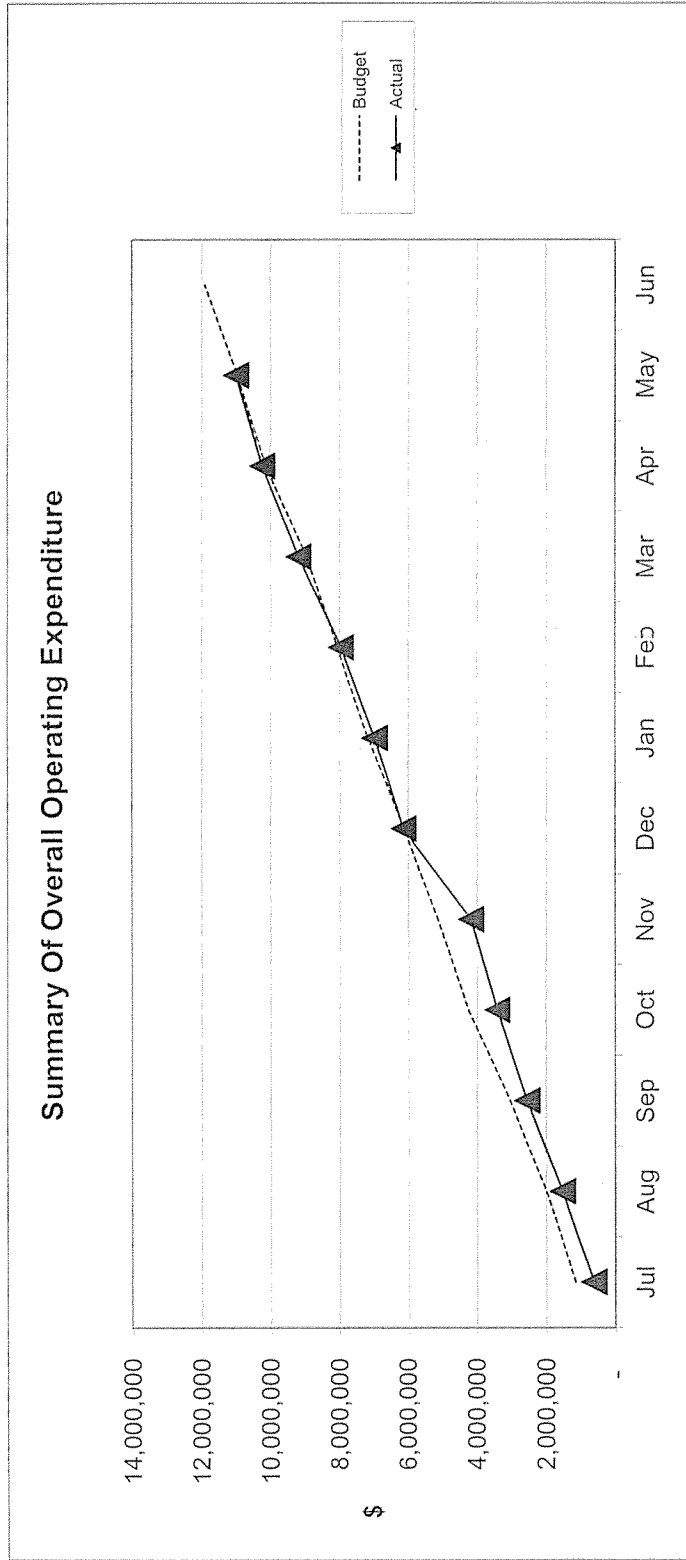
FOR THE PERIOD ENDED 1 JULY 2014 TO 31 MAY 2015



TOWN OF COTTESLOE

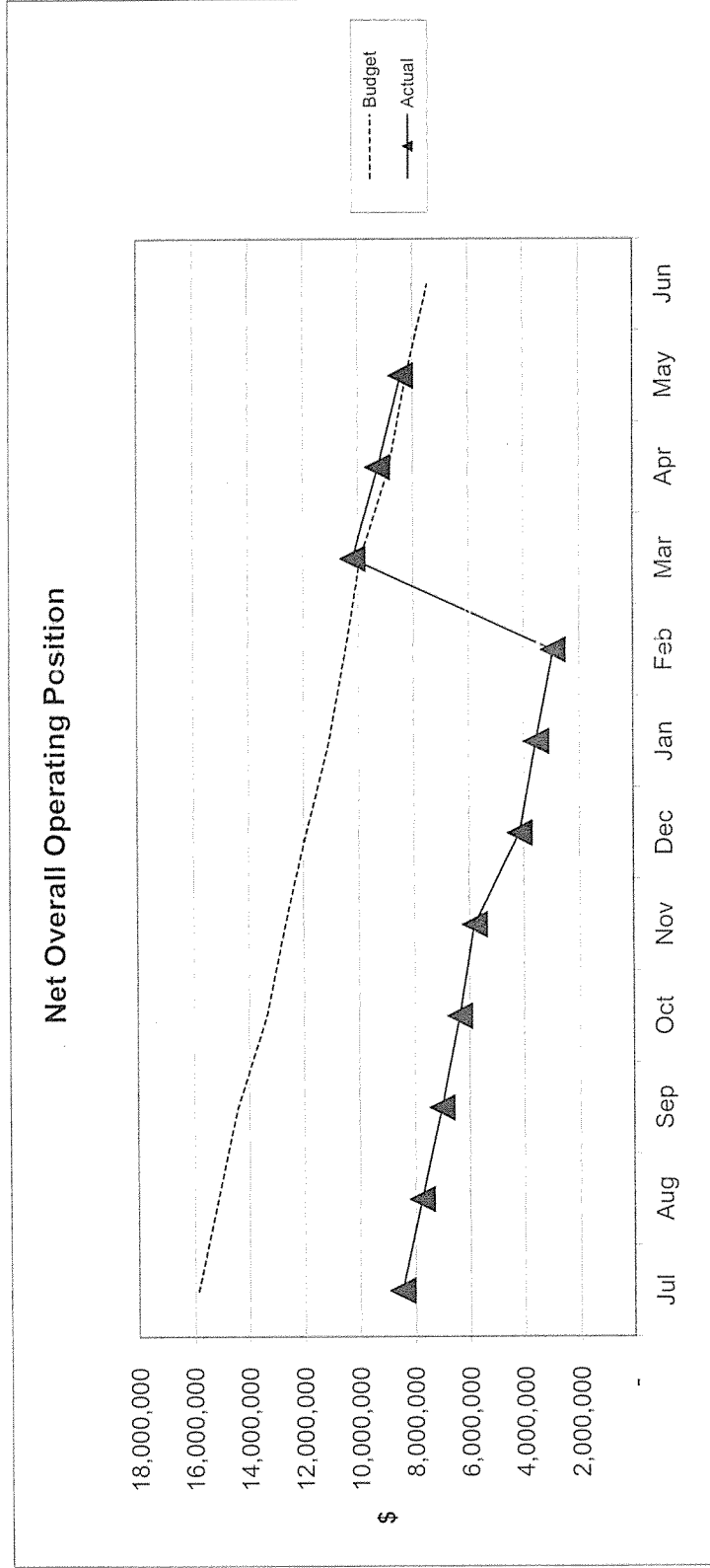
GRAPHICAL SUMMARY OF REVENUE, EXPENDITURE AND NET POSITION FOR 2014 - 2015

FOR THE PERIOD ENDED 1 JULY 2014 TO 31 MAY 2015



TOWN OF COTTESLOE

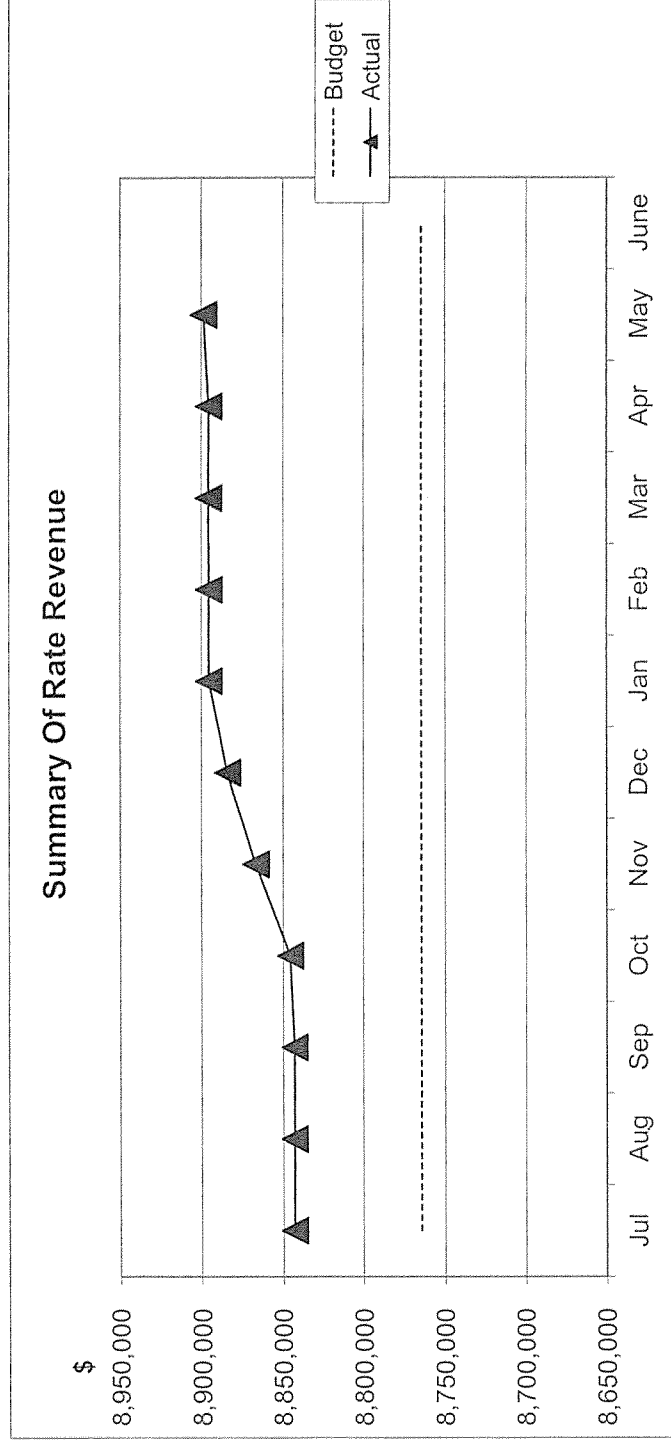
GRAPHICAL SUMMARY OF REVENUE, EXPENDITURE AND NET POSITION FOR 2014 - 2015 FOR THE PERIOD ENDED 1 JULY 2014 TO 31 MAY 2015



TOWN OF COTTESLOE

GRAPHICAL SUMMARY BY NATURE & TYPE FOR 2014 - 2015

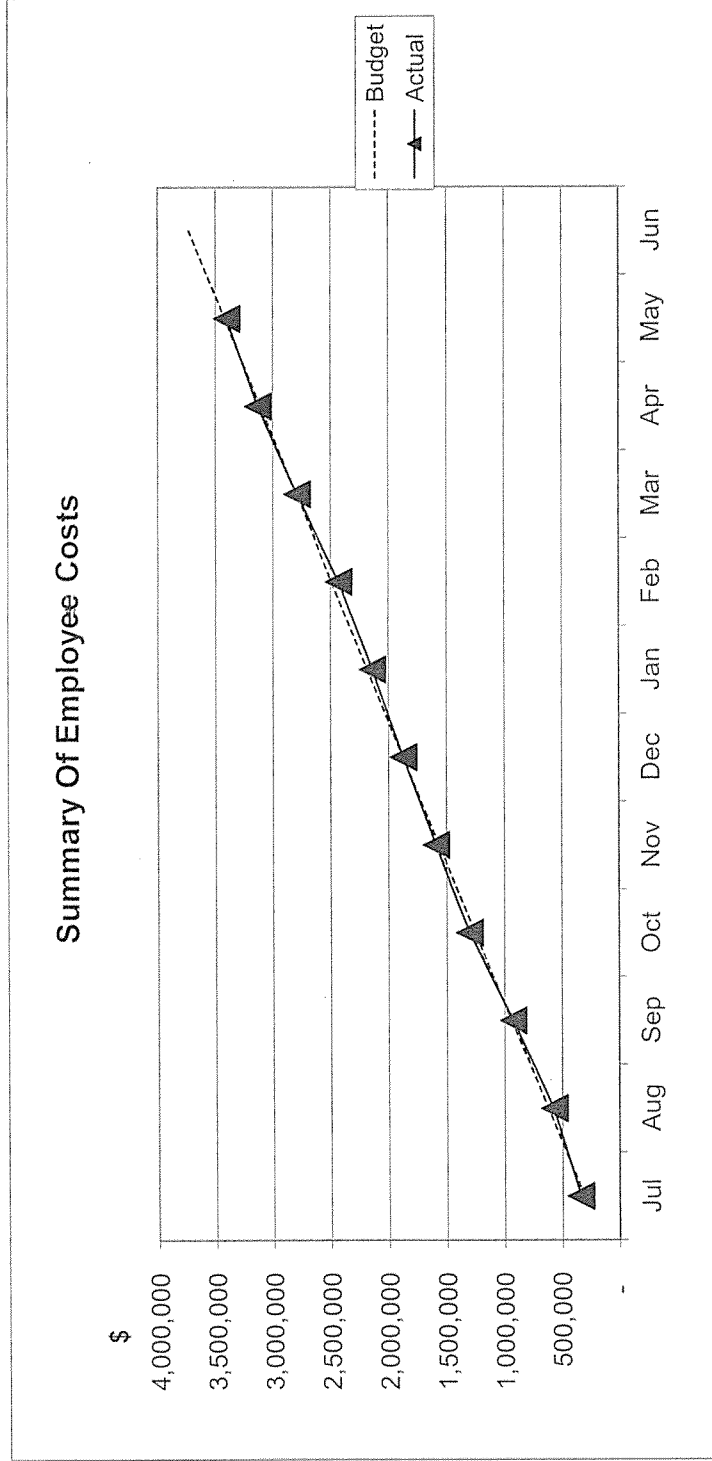
FOR THE PERIOD ENDED 1 JULY 2014 TO 31 MAY 2015



TOWN OF COTTESLOE

GRAPHICAL SUMMARY BY NATURE & TYPE FOR 2014 - 2015

FOR THE PERIOD ENDED 1 JULY 2014 TO 31 MAY 2015



TOWN OF COTTESLOE

GRAPHICAL SUMMARY BY NATURE & TYPE FOR 2014 - 2015

FOR THE PERIOD ENDED 1 JULY 2014 TO 31 MAY 2015

