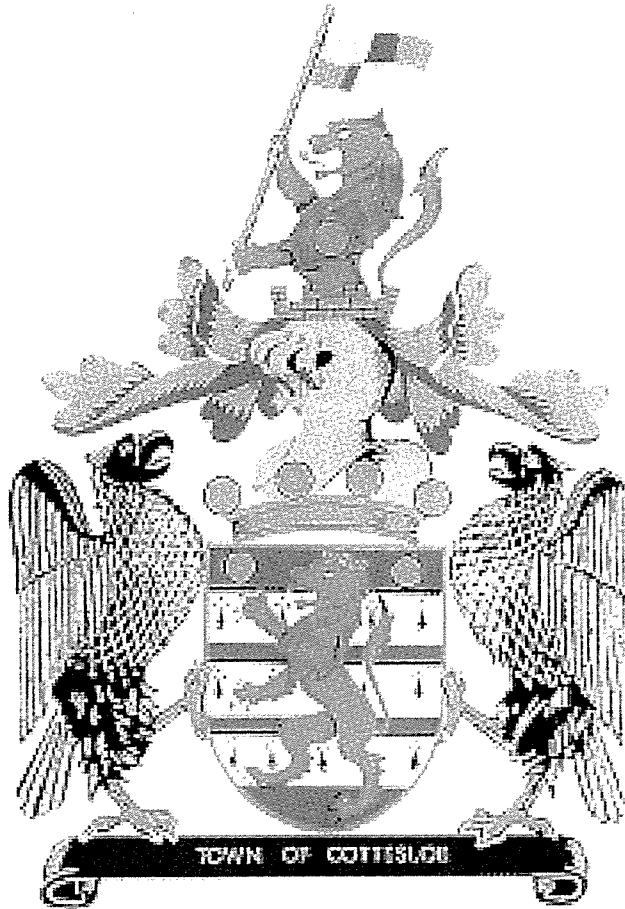


# TOWN OF COTTESLOE



## FINANCIAL STATEMENTS

FOR THE PERIOD 1 JULY 2014 TO 31 JANUARY 2015

PRESENTED TO THE WORKS AND CORPORATE SERVICES  
COMMITTEE ON 17 FEBRUARY 2015

**TOWN OF COTTESLOE**  
**FINANCIAL STATEMENTS**  
**FOR THE PERIOD 1 JULY 2014 TO 31 JANUARY 2015**

**TABLE OF CONTENTS**

Statement of Financial Activity	1
Operating Statement By Program	2
Operating Statement By Nature & Type	3
Balance Sheet	4 - 5
Surplus/(Deficit Position)	6
Variance Analysis	7 - 10
Other Information	
- List of Payments	11 - 16
- Reserves	17 - 19
- Investments	20
- Loans	21
- Sundry Debtors	22 - 25
- Rates Analysis	26
- Budget Amendments	27
- Capital Works Programme	28 - 31
- Graphs	32 - 37

TOWN OF COTTESLOE

STATEMENT OF FINANCIAL ACTIVITY

FOR THE PERIOD ENDED 1 JULY 2014 TO 31 JANUARY 2015

	2014-2015 YTD Actual \$	2014-2015 YTD Budget \$	2014-2015 Budget \$	Variances YTD Actual to YTD Budget \$	Variances YTD Actual to YTD Budget %
<b>Operating Revenue</b>					
General Purpose Funding	333,320	335,869	636,350	(2,549)	(1%)
Governance	66,998	44,460	76,213	22,538	51%
Law, Order and Public Safety	24,943	16,105	18,980	8,838	55%
Health	79,950	75,310	80,310	4,640	6%
Education and Welfare	20,848	17,450	33,036	3,398	19%
Community Amenities	356,397	302,456	542,035	53,941	18%
Recreation and Culture	201,208	139,320	275,936	61,888	44%
Transport	437,307	503,663	831,237	(66,356)	(13%)
Economic Services	94,435	103,649	173,759	(9,214)	(9%)
Other Property and Services	1,764	7,900,350	7,900,600	(7,898,586)	(100%)
<b>Total Operating Revenue</b>	<b>1,617,170</b>	<b>9,438,632</b>	<b>10,568,456</b>	<b>(7,821,462)</b>	<b>(83%)</b>
<b>Operating Expenditure</b>					
General Purpose Funding	(145,531)	(151,351)	(252,997)	5,820	4%
Governance	(443,050)	(519,964)	(801,033)	76,914	15%
Law, Order and Public Safety	(168,242)	(175,913)	(296,826)	7,671	4%
Health	(121,057)	(142,323)	(243,946)	21,266	15%
Education and Welfare	(177,745)	(135,633)	(219,900)	(42,112)	(31%)
Community Amenities	(1,878,293)	(1,971,058)	(3,375,922)	92,765	5%
Recreation and Culture	(2,005,594)	(2,010,495)	(3,305,252)	4,901	0%
Transport	(1,828,473)	(1,754,667)	(3,027,531)	(73,806)	(4%)
Economic Services	(233,716)	(294,322)	(392,585)	60,606	21%
Other Property and Services	31,540	0	26,481	31,540	
<b>Total Operating Expenditure</b>	<b>(6,970,161)</b>	<b>(7,155,726)</b>	<b>(11,889,511)</b>	<b>185,565</b>	<b>3%</b>
<b>Adjustments for Non Cash</b>					
(Profit)/Loss on Asset Disposal	4,251	(7,900,000)	(7,900,000)	7,904,251	(100%)
Movement in Deferred Pensioners & Loan Debtors	(52,468)	0	0	(52,468)	
Movement in Employee Benefit Provisions	(45,211)	0	0	(45,211)	
Depreciation	1,412,589	1,193,946	2,046,524	218,643	18%
<b>Total Adjustments for Non Cash</b>	<b>1,319,161</b>	<b>(6,706,054)</b>	<b>(5,853,476)</b>	<b>8,025,215</b>	<b>(120%)</b>
<b>Capital Expense and Revenue</b>					
Additions - Furniture & Equipment	(9,000)	(21,383)	(36,654)	12,383	58%
Additions - Land & Buildings	(453,008)	(163,646)	(280,500)	(289,362)	(177%)
Additions - Plant & Equipment	(275,558)	(303,800)	(339,700)	28,242	9%
Additions - Roads	(151,533)	0	(300,600)	(151,533)	
Additions - Car Parks	(49,358)	0	0	(49,358)	
Additions - Footpaths	(89,547)	0	(225,250)	(89,547)	
Additions - Drainage	(43,319)	(11,749)	(20,150)	(31,570)	(269%)
Additions - Parks & Reserves	(33,952)	(27,049)	(46,350)	(6,903)	(26%)
Additions - Miscellaneous	(47,503)	0	(70,000)	(47,503)	
Additions - Street Furniture	(150,895)	(268,342)	(460,000)	117,447	44%
Additions - Right of Ways	(66,690)	0	(72,700)	(66,690)	
Additions - Irrigation	(6,054)	(20,020)	(30,800)	13,966	70%
Proceeds from Disposal of Assets	95,565	8,214,930	8,214,930	(8,119,365)	99%
Proceeds from New Loans	0	0	0	0	
Principal Repayments/Disbursements	(186,769)	(186,769)	(365,759)	0	0%
Self Supporting Principal Repayments	23,906	23,906	35,237	0	0%
Transfer from Reserves	0	5,000	5,000	(5,000)	100%
Transfer to Reserves	(20,420)	(8,339,542)	(8,360,648)	8,319,122	100%
<b>Total Capital Expense and Revenue</b>	<b>(1,464,135)</b>	<b>(1,098,464)</b>	<b>(2,353,944)</b>	<b>(365,671)</b>	<b>(33%)</b>
Opening Surplus / (Deficit)	1,192,903	764,096	764,096	428,807	56%
Closing Surplus / (Deficit)	4,590,452	4,011,254	0	579,198	14%
<b>AMOUNT REQUIRED FROM RATES</b>	<b>(8,895,514)</b>	<b>(8,768,770)</b>	<b>(8,764,379)</b>	<b>(131,135)</b>	<b>(1%)</b>

**TOWN OF COTTESLOE**

**OPERATING STATEMENT BY PROGRAM**

**FOR THE PERIOD ENDED 1 JULY 2014 TO 31 JANUARY 2015**

	2014-2015 Actual \$	2014-2015 YTD Budget \$	2014-2015 Budget \$	Variances Budget to YTD Actual \$	Variances Budget to YTD Actual %
<b>Revenue from Ordinary Activities</b>					
General Purpose Funding	9,228,834	9,100,248	9,400,729	128,586	1%
Governance	66,983	44,460	76,213	22,523	51%
Law, Order and Public Safety	24,943	16,105	18,980	8,838	55%
Health	79,950	75,310	80,310	4,640	6%
Education and Welfare	20,848	17,450	33,036	3,398	19%
Community Amenities	356,397	302,456	542,035	53,941	18%
Recreation and Culture	146,159	139,320	275,936	6,839	5%
Transport	354,024	503,663	831,237	(149,639)	(30%)
Economic Services	94,435	103,649	173,759	(9,214)	(9%)
Other Property and Services	1,569	350	600	1,219	348%
<b>Total Operating Revenue</b>	<b>10,374,142</b>	<b>10,303,011</b>	<b>11,432,835</b>	<b>71,131</b>	<b>1%</b>
<b>Expenses from Ordinary Activities</b>					
General Purpose Funding	(145,531)	(151,351)	(252,997)	5,820	4%
Governance	(443,050)	(519,789)	(800,733)	76,739	15%
Law, Order and Public Safety	(168,242)	(175,913)	(296,826)	7,671	4%
Health	(121,057)	(142,323)	(243,946)	21,266	15%
Education and Welfare	(177,745)	(135,633)	(219,900)	(42,112)	(31%)
Community Amenities	(1,865,745)	(1,971,058)	(3,375,922)	105,313	5%
Recreation and Culture	(1,801,016)	(1,835,029)	(2,964,734)	34,013	2%
Transport	(1,828,473)	(1,754,667)	(3,027,531)	(73,806)	(4%)
Economic Services	(228,685)	(294,322)	(392,585)	65,637	22%
Other Property and Services	31,538	0	26,481	31,538	
<b>Total Operating Expenditure</b>	<b>(6,748,006)</b>	<b>(6,980,085)</b>	<b>(11,548,693)</b>	<b>232,079</b>	<b>3%</b>
<b>Borrowing Costs</b>					
Governance	0	(175)	(300)	175	100%
Recreation and Culture	(204,340)	(175,466)	(340,518)	(28,874)	(16%)
<b>Total Borrowing Costs</b>	<b>(204,340)</b>	<b>(175,641)</b>	<b>(340,818)</b>	<b>(28,699)</b>	<b>(16%)</b>
<b>Grants/Contributions for Asset Development</b>					
Recreation and Culture	49,797	0	0	49,797	
Transport	75,182	0	0	75,182	
<b>Total Grants/Contributions for Asset Development</b>	<b>124,979</b>	<b>0</b>	<b>0</b>	<b>124,979</b>	
<b>Profit/ (Loss) on Asset Disposal</b>					
Governance	14	0	0	14	
Community Amenities	(12,548)	0	0	(12,548)	
Recreation and Culture	5,015	0	0	5,015	
Transport	8,102	0	0	8,102	
Economic Services	(5,030)	0	0	(5,030)	
Other Property and Services	196	7,900,000	7,900,000	(7,899,804)	(100%)
<b>Total Profit/ (Loss) on Asset Disposal</b>	<b>(4,251)</b>	<b>7,900,000</b>	<b>7,900,000</b>	<b>(7,904,251)</b>	
<b>NET PROFIT OR LOSS</b>	<b>3,542,524</b>	<b>11,047,285</b>	<b>7,443,324</b>	<b>(7,504,761)</b>	<b>(68%)</b>

## TOWN OF COTTESLOE

### OPERATING STATEMENT BY NATURE & TYPE

FOR THE PERIOD ENDED 1 JULY 2014 TO 31 JANUARY 2015

	2014-2015 YTD Actual \$	2014-2015 YTD Budget \$	2014-2015 Budget \$	Variances Budget to Actual YTD \$	Variances Budget to Actual YTD %
<b>Operating Revenue</b>					
Rates	8,895,514	8,764,379	8,764,379	131,135	1%
Grants - Operating	159,402	83,944	163,800	75,458	90%
Fees & Charges	1,010,484	1,108,527	1,815,283	(98,043)	(9%)
Interest Earned	162,170	239,380	463,900	(77,210)	(32%)
Other Revenue	141,312	106,781	225,473	34,531	32%
<b>Total Operating Revenue</b>	<b>10,368,882</b>	<b>10,303,011</b>	<b>11,432,835</b>	<b>65,871</b>	<b>1%</b>
<b>Operating Expenditure</b>					
Employee Costs	(2,138,135)	(2,183,157)	(3,727,930)	45,022	2%
Contractors and Materials	(2,371,776)	(2,466,275)	(4,311,454)	94,499	4%
Depreciation	(1,412,589)	(1,193,946)	(2,046,524)	(218,643)	(18%)
Insurance	(183,304)	(192,906)	(192,905)	9,602	5%
Interest Expense	(204,340)	(175,641)	(340,818)	(28,699)	(16%)
Utility Costs	(174,939)	(291,591)	(318,486)	116,652	40%
Other Expenses	(462,002)	(652,210)	(951,394)	190,208	29%
<b>Total Operating Expenditure</b>	<b>(6,947,085)</b>	<b>(7,155,726)</b>	<b>(11,889,511)</b>	<b>208,641</b>	<b>3%</b>
Grants/Contributions - Non Operating	124,979	0	0	124,979	
Profit on Asset Disposals	13,564	7,900,000	7,900,000	(7,886,436)	100%
Loss on Asset Disposals	(17,816)	0	0	(17,816)	
<b>NET PROFIT OR LOSS</b>	<b>3,542,524</b>	<b>11,047,285</b>	<b>7,443,324</b>	<b>(7,504,761)</b>	<b>(68%)</b>

# TOWN OF COTTESLOE

## STATEMENT OF FINANCIAL POSITION

FOR THE PERIOD 1 JULY 2014 TO 31 JANUARY 2015

		2014-2015 YTD Actual	2013-2014 YTD Actual	2013-2014 Actual
<b>CURRENT ASSETS</b>				
Receivables				
	Rates	1,699,506	1,516,189	65,905
	Sundry Debtors	90,471	107,967	166,682
	Accrued Income	26,858	0	7,057
	Self Supporting Loans	11,331	23,213	35,237
	Other	(1,565)	0	0
Prepayments	Prepaid Expenses	0	0	31,214
Inventories	Inventories	41,624	41,524	41,624
Cash Assets				
	Municipal Account	171,301	334,127	115,740
	Till Floats	700	700	700
	Investment Account	785,975	486,322	355,468
	Term Investments	3,174,569	3,739,963	1,245,168
	Restricted - Reserves	1,203,365	673,133	1,182,945
	Restricted - Trust	651,744	599,356	651,814
		<hr/>	<hr/>	<hr/>
<b>TOTAL CURRENT ASSETS</b>		<b>7,855,879</b>	<b>7,522,494</b>	<b>3,899,554</b>
<b>CURRENT LIABILITIES</b>				
Payables		736,308	584,270	120,377
Payable Trust		728,117	645,181	672,250
Accrued Expenses		586,304	0	695,840
Interest Bearing Liabilities		178,990	181,419	365,759
Provisions		681,729	28,046	683,621
		<hr/>	<hr/>	<hr/>
<b>TOTAL CURRENT LIABILITIES</b>		<b>2,911,448</b>	<b>1,438,916</b>	<b>2,537,847</b>
<b>NON CURRENT ASSETS</b>				
Receivables				
	Deferred Rates & ESL	192,690	177,114	194,999
	Self Supporting Loans	256,620	291,857	256,620
	Sundry Debtors - Loans	54,777	0	0
Property Plant and Equipment				
	Furniture and Equipment	444,361	392,443	521,648
	Land and Buildings	45,537,809	14,665,535	45,535,947
	Plant and Equipment	712,046	755,338	672,185
	Equity Investments	1,034,684	1,055,826	1,034,684
Infrastructure				
	Roads	6,268,705	6,427,193	6,550,270
	Car Parks	789,493	770,030	759,019
	Footpaths	2,093,983	1,974,638	2,125,678
	Drainage	3,521,192	3,401,040	3,541,032
	Parks and Reserves	170,740	145,341	160,334
	Miscellaneous	830,446	637,384	820,600
	Street Furniture	447,236	340,912	319,535
	Right of Ways	324,363	194,479	263,748
	Irrigation	276,749	273,086	283,114
		<hr/>	<hr/>	<hr/>
<b>TOTAL NON CURRENT ASSETS</b>		<b>62,955,894</b>	<b>31,502,216</b>	<b>63,039,413</b>

# TOWN OF COTTESLOE

## STATEMENT OF FINANCIAL POSITION

FOR THE PERIOD 1 JULY 2014 TO 31 JANUARY 2015

	2014-2015 YTD Actual	2013-2014 YTD Actual	2013-2014 Actual
<b>NON CURRENT LIABILITIES</b>			
Interest Bearing Liabilities	5,147,371	5,513,130	5,147,371
Provisions	26,842	2	70,161
<b>TOTAL NON CURRENT LIABILITIES</b>	<b>5,174,213</b>	<b>5,513,132</b>	<b>5,217,532</b>
<b>NET ASSETS</b>	<b><u>62,726,112</u></b>	<b><u>32,072,662</u></b>	<b><u>59,183,588</u></b>
<b>EQUITY</b>			
Reserves - Cash Backed	1,203,365	1,131,048	1,182,945
Reserves - Asset Revaluation	29,047,860	239,554	29,047,860
Retained Surplus	32,474,887	30,702,064	28,952,783
<b>TOTAL EQUITY</b>	<b><u>62,726,112</u></b>	<b><u>32,072,666</u></b>	<b><u>59,183,588</u></b>
<b>RESERVES - CASH BACKED</b>			
Opening Balance	1,182,945	1,297,388	1,370,269
Transfer to Reserves	20,420	40,983	73,315
Transfer from Reserves	0	(207,323)	(260,639)
<b>TOTAL RESERVES - CASH BACKED</b>	<b>1,203,365</b>	<b>1,131,048</b>	<b>1,182,945</b>
<b>RESERVES - ASSET REVALUATION</b>			
Opening Balance	29,047,860	239,554	29,047,860
<b>TOTAL RESERVES - ASSET REVALUATION</b>	<b>29,047,860</b>	<b>239,554</b>	<b>29,047,860</b>
<b>RETAINED SURPLUS</b>			
Opening Balance	28,952,783	25,776,737	28,229,763
Change in Net Assets from Operations	3,542,524	4,758,987	535,696
Transfer from Reserve	0	207,323	260,639
Transfer to Reserve	(20,420)	(40,983)	(73,315)
<b>TOTAL RETAINED SURPLUS</b>	<b>32,474,887</b>	<b>30,702,064</b>	<b>28,952,783</b>
<b>TOTAL EQUITY</b>	<b><u>62,726,112</u></b>	<b><u>32,072,666</u></b>	<b><u>59,183,588</u></b>

# TOWN OF COTTESLOE

## SURPLUS/(DEFICIT) ANALYSIS

FOR THE PERIOD 1 JULY 2014 TO 31 JANUARY 2015

	YTD Actual \$	2014 \$
<b>Surplus/(Deficit)</b>	<b>4,590,452</b>	<b>1,192,903</b>
<b><u>Comprises:</u></b>		
Cash - Unrestricted	4,056,172	1,641,641
Cash - Restricted	1,203,565	1,237,945
Rates - Current	1,699,506	69,230
Sundry Debtors	90,471	166,690
Accrued Income	26,858	7,057
Prepayments	0	31,214
GST Receivable	0	50,745
Loans - Clubs	11,331	35,237
Other Tax Debtors	(1,565)	512
Inventories		
- History Books	41,624	41,624
- Land Held for Resale	0	156,175
<b>Less:</b>		
Sundry Creditors	(736,308)	(103,312)
Accrued Expenses	(417,827)	(482,681)
Accrued Interest on Debentures	(126,369)	(97,489)
Accrued Salaries and Wages	(42,108)	(118,994)
Other Tax Liabilities	0	(68,334)
Current Employee Benefits Provision	(681,729)	(683,621)
Loans	(178,990)	(365,759)
Other	(2)	0
<b>Net Current Assets</b>	<b>4,944,629</b>	<b>1,517,880</b>
<b>Less:</b>		
Reserves - Restricted Cash	(1,203,565)	(1,182,945)
Land Held for Resale	0	(156,175)
Loans - Clubs	(11,331)	(35,237)
<b>Add:</b>		
Loans	178,990	365,759
Current Employee Benefits Provision	681,729	683,621
<b>Surplus/(Deficit)</b>	<b>4,590,452</b>	<b>1,192,903</b>



TOWN OF COTTESLOE

STATEMENT OF FINANCIAL ACTIVITY - VARIANCE ANALYSIS  
FOR THE PERIOD ENDED 1 JULY 2014 TO 31 JANUARY 2015

Note 2. VARIANCES (Report on material variances from the Statement of Financial Activity).

(Material variances are deemed to be greater than 15% or \$25,000)

OPERATING REVENUE

Program/Nature & Type	YTD Actual \$	YTD Budget \$	Variance \$	Variance %	Impact of Variation	Main Factors \$	Manager	Officer	Main Factors Influencing Variance
Governance	66,998	44,460	22,538	51%	Timing	21,063	FM	FM	Timing of reimbursements
Law, Order & Public Safety	24,943	16,105	8,838	55%	Extra revenue	8,035	FM	FM	Increased revenue from registration fees
Education & Welfare	20,848	17,450	3,398	19%	Timing	4,353	FM	FM	Timing of reimbursements
Community Amenities	356,397	302,456	53,941	18%	Timing	16,138	FM	FM	Timing of contributions
					Possibly Extra Revenue Timing/Possibly Extra Revenue	17,749	PEHO	FM	Possibly extra fees from waste collection services
						18,647	FM	FM	Extra Town Planning fees
Recreation & Culture	201,208	139,320	61,888	44%	Extra revenue matched with extra expenditure	49,797	MCCS	MCCS	Contribution towards structural works
Transport	437,307	503,663	(66,356)	(13%)	Reduced revenue	(150,969)	MCCS	SR	Reduced revenue from parking
					Extra revenue matched with extra expenditure Carry forward from prior period	18,182	MCCS	MCCS	Contribution towards the new Depot storage bays
						57,000	MES	MES	Grant funding from 2013/2014

TOWN OF COTTESLOE

STATEMENT OF FINANCIAL ACTIVITY - VARIANCE ANALYSIS  
FOR THE PERIOD ENDED 1 JULY 2014 TO 31 JANUARY 2015

Note 2. VARIANCES (Report on material variances from the Statement of Financial Activity)

OPERATING EXPENDITURE

<u>Program/Nature &amp; Type</u>	<u>YTD Actual</u> \$	<u>YTD Budget</u> \$	<u>Variance</u> \$	<u>Variance</u> %	<u>Impact of Variation</u>	<u>Main Factors</u> \$	<u>Manager</u>	<u>Officer</u>	<u>Main Factors Influencing Variance</u>
Governance	(443,050)	(519,964)	76,914	15%	Timing/Possible reduced expenditure	53,665	FM	FM	Timing of Contractor expenditure
					Reduced expenditure	31,517	FM	FM	Reduced expenditure on training
					Reduced expenditure	17,660	FM	FM	Reduced expenditure on recruitment
Health	(121,057)	(142,323)	21,266	15%	Timing	7,106	FM	FM	Reduced employee costs
Education & Welfare	(177,745)	(135,633)	(42,112)	(31%)	Depreciation - Non Cash	(39,354)	FM	FM	Increased depreciation costs
Community Amenities	(1,878,293)	(1,971,058)	92,765	5%	Timing/Possible reduced expenditure	78,871	MDS	PEHO	Timing, possible saving of waste contractors
Transport	(1,828,473)	(1,754,667)	(73,806)	(4%)	Increased expenditure offset by reductions elsewhere	(71,406)	FM	FM	Increased expenditure on street tree maintenance partial caused by increased overhead allocations due to staff changeover and payment of accrued entitlements.
Economic Services	(233,716)	(294,322)	60,606	21%	Timing	60,000	MDS	BS	Timing of contractor expenses

NON CASH TRANSACTIONS

<u>Program/Nature &amp; Type</u>	<u>YTD Actual</u> \$	<u>YTD Budget</u> \$	<u>Variance</u> \$	<u>Variance</u> %	<u>Impact of Variation</u>	<u>Main Factors</u> \$	<u>Manager</u>	<u>Officer</u>	<u>Main Factors Influencing Variance</u>
(Profit)/Loss on Asset Disposal	4,251	(7,900,000)	7,904,251	(100%)	Timing	7,900,000	FM	FM	Delays in disposing of property
Movement in Non Current Receivables	(52,468)	-	(52,468)		Non cash adjustments	(52,468)	FM	FM	Movements in non current receivables
Movement in Employee Provisions	(45,211)	-	(45,211)		Non cash adjustments	(45,211)	FM	FM	Movements in employee entitlements
Depreciation	1,412,589	1,193,946	218,643	18%	Depreciation - Non Cash	218,643	FM	FM	Increased depreciation charges due to revaluation of buildings

TOWN OF COTTESLOE

STATEMENT OF FINANCIAL ACTIVITY - VARIANCE ANALYSIS  
FOR THE PERIOD ENDED 1 JULY 2014 TO 31 JANUARY 2015

Note 2. VARIANCES (Report on material variances from the Statement of Financial Activity)

CAPITAL EXPENDITURE AND INCOME

	<u>YTD Actual</u> \$	<u>YTD Budget</u> \$	<u>Variance</u> \$	<u>Variance</u> %	<u>Impact of Variation</u>	<u>Main Factors</u> \$	<u>Manager</u>	<u>Officer</u>	<u>Main Factors Influencing Variance</u>
- Furniture & Equipment	(9,000)	(21,383)	12,383	58%	Timing	12,383	FM	FM	Timing of expenditure
- Land & Buildings	(453,008)	(163,646)	(289,362)	(177%)	Additional expenditure part funded by third party	(99,595)	MCCS	FM	Remedial works to Sea View Golf Club Building
- Plant & Equipment	(275,558)	(303,800)	28,242	9%	Timing	36,000	MES	FM	Reduced expenditure on vehicles
- Infrastructure Roads	(151,533)	-	(151,533)		Timing	(151,533)	MES	FM	Timing of expenditure
- Infrastructure Car Parks	(49,358)	-	(49,358)		Extra expenditure to be part funded by third party	(49,358)	MES	FM	Car park construction works at Sea View Golf Club
- Infrastructure Footpaths	(89,547)	-	(89,547)		Timing	(89,547)	MES	FM	Timing of expenditure
- Infrastructure Drainage	(43,319)	(11,749)	(31,570)	(269%)	Additional expenditure	(31,570)	MES	WS	Additional expenditure
- Infrastructure Parks & Reserves	(33,952)	(27,049)	(6,903)	(26%)	Additional expenditure	(10,260)	MCCS	MES	Additional expenditure as per Depot Funds strategy - John Black Dune Reserve

TOWN OF COTTESLOE

STATEMENT OF FINANCIAL ACTIVITY - VARIANCE ANALYSIS  
FOR THE PERIOD ENDED 1 JULY 2014 TO 31 JANUARY 2015

Note 2. VARIANCES (Report on material variances from the Statement of Financial Activity)

CAPITAL EXPENDITURE AND INCOME (Continued)

	YTD Actual	YTD Budget	Variance	Variance %	Impact of Variation	Main Factors	Manager	Officer	Main Factors Influencing Variance
	\$	\$	\$	%		\$			
- Infrastructure Miscellaneous	47,503	-	47,503		Extra expenditure	41,443	MES	MES	Extra expenditure to move the storage bays from the former Depot site to sea view golf course
- Infrastructure Street Furniture	(150,895)	(268,342)	117,447	44%	Timing	117,447	MES	FM	Timing of expenditure
- Infrastructure Right Of Ways	(66,690)	0	(66,690)		Timing	(66,690)	MES	FM	Timing of expenditure
- Infrastructure Irrigation	(6,054)	(20,020)	13,966	70%	Timing	13,966	MES	FM	Timing of expenditure

CAPITAL, NON CASH & RESERVE TRANSFERS (Cont'd)

	Variance	Variance %	Explanation	Manager	Officer	Main Factors Influencing Variance			
	\$	%							
- Proceeds from Disposal of Assets	95,565	8,214,930	(8,119,365)	99%	Timing	(8,119,365)	MES	FM	Timing of disposals
<u>RESERVE TRANSFERS</u>									
- Transfers from Reserves	0	5,000	(5,000)	100%	Timing	(5,000)	FM	FM	Timing of transfers from reserves
- Transfer to Reserves	(20,420)	(8,339,542)	8,319,122	100%	Reduced transfer to reserves		MES	FM	Reduction in transfer to reserves due to the delays in sale of property

TOWN OF COTTESLOE

LIST OF ACCOUNTS PAID DURING JANUARY 2015 AND PRESENTED TO A MEETING OF THE WORKS & CORPORATE SERVICES COMMITTEE HELD ON 17 FEBRUARY 2015

CERTIFICATE OF CHIEF EXECUTIVE OFFICER



<u>Date</u>	<u>Payment Reference</u>	<u>Payee</u>	<u>Description</u>	<u>Amount</u>
7/01/2015	00025179	City of Nedlands	Regional initiative	\$ 500.00
7/01/2015	00025180	K P Downes	Elected member expense claim 1 Jul - 31 Dec 14	\$ 8,550.00
7/01/2015	00025181	S J Pyvis	Elected member expense claim 1 Jul - 31 Dec 14	\$ 8,550.00
7/01/2015	00025182	Telstra Corporation Limited	Services and equipment rental from 13 Dec 14 - 13 Jan 15	\$ 1,338.19
13/01/2015	00025183	Alinta	Account for Stack St depot 23 Sep - 19 Dec 14	\$ 49.15
13/01/2015	00025184	BCITF	BCITF December 2014	\$ 1,507.00
13/01/2015	00025185	City of Nedlands	Contribution to WESROC projects	\$ 5,331.70
13/01/2015	00025186	Landgate - VGO	Fortnightly valuations 22 Nov - 5 Dec 14	\$ 248.75
13/01/2015	00025187	Smart Parking Ltd	Data and maintenance fee - Dec 14	\$ 2,727.00
13/01/2015	00025188	Synergy	Streightlight tariff charge 25 Nov - 24 Dec 14	\$ 12,220.15
13/01/2015	00025189	Telstra Corporation Limited	Mobile and iPad usage from 28 Nov - 27 Dec 14	\$ 1,266.96
14/01/2015	00025190	J E Searle	Overpayment refund	\$ 829.79
14/01/2015	00025191	S Hunt	Bond refund	\$ 1,000.00
14/01/2015	00025192	Agnew Interior Design Pty Ltd	Bond refund	\$ 1,000.00
14/01/2015	00025193	N Kitaeff	Bond refund	\$ 200.00
14/01/2015	00025194	Bryan Cowan	Reimbursement	\$ 80.95
14/01/2015	00025195	AustralianSuper Pty Ltd	Superannuation	\$ 582.92
14/01/2015	00025196	Colonial First State Rollover	Superannuation	\$ 437.23
14/01/2015	00025197	HESTA Super Fund	Superannuation	\$ 83.40
14/01/2015	00025198	ING DIRECT Superannuation Fund	Superannuation	\$ 233.82
14/01/2015	00025199	Suncorp Portfolio Services Ltd	Superannuation	\$ 192.48
14/01/2015	00025200	WA Super	Superannuation	\$ 32,153.35
15/01/2015	00025201	Synergy	Supply Stack St depot from 5 Nov 14 - 2 Jan 15	\$ 269.15
15/01/2015	00025202	Water Corporation	Charges for various locations from 1 Jan - 28 Feb 15	\$ 2,798.60

<u>Date</u>	<u>Payment Reference</u>	<u>Payee</u>	<u>Description</u>	<u>Amount</u>
19/01/2015	00025203	Building Commission	BSL December 2014	\$ 2,936.42
19/01/2015	00025204	Water Corporation	Charges for various locations from 1 Jan - 28 Feb 15	\$ 876.35
22/01/2015	00025205	Landgate - VGO	Fortnightly valuations 6-19 Dec 14	\$ 91.62
22/01/2015	00025206	Water Corporation	Charges for various locations from 1 Jan - 28 Feb 15	\$ 326.48
27/01/2015	00025207	Collins Booksellers	Citizenship ceremony expenses	\$ 89.88
27/01/2015	00025208	Synergy	Charges for various locations from 12 Nov 14 - 13 Jan 15	\$ 1,446.85
27/01/2015	00025209	Telstra Corporation Limited	Usage, service and equipment charges from 13 Jan - 13 Feb 15	\$ 1,272.40
27/01/2015	00025210	Water Corporation	Charges for various locations from 1 Jan - 28 Feb 15	\$ 5,713.80
27/01/2015	00025211	P S R Jackson	Bond refund	\$ 1,000.00
27/01/2015	00025212	P S R Jackson	Bond refund	\$ 1,000.00
27/01/2015	00025213	A J Rogers	Refund of fees	\$ 85.50
27/01/2015	00025214	Palazzo Homes Pty Ltd	Refund of fees	\$ 720.00
27/01/2015	00025215	JA & BM Davis	Overpayment refund	\$ 311.43
27/01/2015	00025216	J D Whyte	Key deposit refund	\$ 40.00
27/01/2015	00025217	Town of Cottesloe	Non creditor cheque un-presented at bank	\$ 250.00
27/01/2015	00025218	Town of Cottesloe	Non creditor cheque un-presented at bank	\$ 20.00
27/01/2015	00025219	Town of Cottesloe	Non creditor cheque un-presented at bank	\$ 10.00
27/01/2015	00025220	ACP Investments Pty Ltd	Bond refund	\$ 349.00
27/01/2015	00025221	L M Haynes	Bond refund	\$ 200.00
27/01/2015	00025222	3D Edge Designers & Planners	Bond refund	\$ 1,000.00
27/01/2015	00025223	Big Ben Homes	Bond refund	\$ 1,000.00
27/01/2015	00025224	Janice Rooney	Bond refund	\$ 1,000.00
5/01/2015	830.98000	Australian Taxation Office	Business Activity Statement	\$ 46,281.35
7/01/2015	831.1042	Recall Information Management Pty Ltd	Secure bin shredding 22 Nov - 19 Dec 14	\$ 121.04
7/01/2015	831.1047	C Askew	Quarterly telephone reimbursement claim	\$ 579.00
7/01/2015	831.1200	Adams Coachlines	Cott Cat Bus Shuttle - Dec 14	\$ 7,868.65
7/01/2015	831.122	Jackson McDonald Lawyers	Legal services	\$ 3,488.97
7/01/2015	831.1245	Nu-Trac Rural Contracting	Beach cleaning - Dec 14	\$ 11,286.00
7/01/2015	831.128	Total Packaging (WA) Pty Ltd	Waste bags	\$ 2,013.44
7/01/2015	831.1479	Environmental Wastewater C S Pty Ltd	Road sweeping - Nov 14	\$ 5,083.66
7/01/2015	831.159	John Parker Vactor Jet Rodding	Drain cleaning various sites in Cottesloe	\$ 1,782.00
7/01/2015	831.1591	Labourforce Impex Personnel Pty Ltd	Temporary depot staff w/e 28 Dec 14	\$ 1,006.37
7/01/2015	831.16	Presswise Publications	Civic Centre News - 13 Dec 14	\$ 1,155.00
7/01/2015	831.1653	Chamberlain Dean Pty Ltd	Temporary depot staff w/e 19 Dec 14	\$ 2,406.09
7/01/2015	831.1673	M Rachan	Reimbursement - Christmas party 2014	\$ 36.95
7/01/2015	831.1684	Mondoluce (Aust) Pty Ltd	Installation of streetlighting - Napoleon St	\$ 28,070.90
7/01/2015	831.1723	Perthwaste Green Recycling	Domestic and commercial waste disposal - Nov 14 and 5x660l bins with red lids	\$ 50,762.15
7/01/2015	831.1736	Matrix Productions	Lighting equipment for Carols by Candlelight	\$ 2,411.92
7/01/2015	831.1794	Express Salary Packaging Pty Ltd	GST on lease vehicle 1EEX663	\$ 54.08
7/01/2015	831.1841	BMT Oceanica PTY LTD	Professional services coastal monitoring	\$ 5,548.40

<u>Date</u>	<u>Payment Reference</u>	<u>Payee</u>	<u>Description</u>	<u>Amount</u>
7/01/2015	831.185	Miracle Recreation Equipment	Ashburton seat with armrests	\$ 1,815.00
7/01/2015	831.1858	CLAW Environmental	Collection of broken bins	\$ 165.00
7/01/2015	831.199	ADH Motorised Golf Cars & Utility	Replacement battery for club car 1DLV704	\$ 376.64
7/01/2015	831.20	Hillmack Sales (Australia) Pty Ltd	Concrete for footpath - Mann St	\$ 343.50
7/01/2015	831.201	Environmental Printing Company	Stationery order	\$ 3,168.00
7/01/2015	831.222	W A Richards	Reimbursement	\$ 40.00
7/01/2015	831.29	Fuji Xerox Australia Pty Ltd	Meter reading X415213 - Nov 14	\$ 552.82
7/01/2015	831.35	Cottesloe IGA	Milk and batteries	\$ 13.17
7/01/2015	831.38	Veolia Environmental Services	Replacement hook bin - old depot site	\$ 824.30
7/01/2015	831.390	North Cottesloe Surf Life Saving Club	Venue hire	\$ 1,630.00
7/01/2015	831.526	Zipform Pty Ltd	Third instalment of rate notices	\$ 2,612.62
7/01/2015	831.580	St John Ambulance Australia (WA) Inc	First aid services - Carols by Candlelight	\$ 233.16
7/01/2015	831.62	Bunning's Group Ltd	Hardware supplies	\$ 51.26
7/01/2015	831.650	Coates Hire Operations Pty Ltd	Two lighting towers - Carols by Candlelight	\$ 529.76
7/01/2015	831.656	Surf Life Saving Western Australia	Lifeguard contract - Dec 14	\$ 30,344.28
7/01/2015	831.75	Safety Zone Australia Pty Ltd	Safety wear	\$ 401.01
7/01/2015	831.77	Galvins Plumbing Supplies	Zip hydrotap triple filter for staffroom	\$ 132.46
7/01/2015	831.79	Perth Irrigation Centre	Irrigation hardware supplies	\$ 540.57
7/01/2015	831.8	WA Hino	New Hino 300 series 1ERL767 less trade in	\$ 46,295.66
7/01/2015	831.85	Western Metropolitan Regional Council	Transfer station waste disposal	\$ 26,555.99
7/01/2015	831.87	Reppo	2x500ml bottles of brake fluid	\$ 14.50
7/01/2015	831.89	Major Motors Pty Ltd	Service 5T truck 1DWY785	\$ 315.00
7/01/2015	831.94	Insight CCS Pty Ltd	After hours answering service - Nov 14	\$ 442.07
7/01/2015	831.986	Colleagues Printing Solutions	500 Visitor parking permits	\$ 362.00
7/01/2015	832.1774	Express Salary Packaging Pty Ltd	Payroll Deduction	\$ 866.35
7/01/2015	832.3	Department of Human Services	Payroll Deduction	\$ 214.80
7/01/2015	832.5	LGRCEU	Payroll Deduction	\$ 155.20
7/01/2015	833.1098	National Australia Bank Business Visa	2 HP Monitors and 2 HP Display Adapters - \$396.00 Monthly credit card fee - \$9.00	\$ 405.00
13/01/2015	834.101	Airflow Maintenance Company	Maintenance of administration air conditioning	\$ 748.00
13/01/2015	834.105	Active Transport & Tilt Tray Service	Removal of abandoned vehicles	\$ 242.00
13/01/2015	834.132	Landfill Gas & Power Pty Ltd	Black power supply at Civic Centre - Dec 14	\$ 2,962.70
13/01/2015	834.1377	Harvey Norman AV/IT Superstore O'Connor	Repair damaged screen on loan phone	\$ 50.00
13/01/2015	834.1457	Church of Christ	Delivery of 3600 Sustainability Calendar	\$ 1,760.00
13/01/2015	834.1576	Edinger Real Estate	Monthly lease fee for Stack St depot - Feb 15	\$ 15,006.84
13/01/2015	834.1578	Force Towers Pty Ltd	Hire of cherry picker 17 Dec 14	\$ 792.00
13/01/2015	834.1582	Snap Claremont	Plan printing	\$ 10.00
13/01/2015	834.1591	Labourforce Impex Personnel Pty Ltd	Temporary depot staff w/e 2 Jan 15	\$ 1,341.82
13/01/2015	834.1653	Chamberlain Dean Pty Ltd	Temporary depot staff w/e 2 Jan 15	\$ 1,460.84
13/01/2015	834.1700	Rodrigues Bodycoat Architects	Architectural services - Progress claim	\$ 5,280.00

<u>Date</u>	<u>Payment Reference</u>	<u>Payee</u>	<u>Description</u>	<u>Amount</u>
13/01/2015	834.1854	Picton Press Pty Ltd	2015 Sustainability calendars	\$ 8,782.40
13/01/2015	834.195	NCH Australia Pty Ltd	Hardware supplies	\$ 442.59
13/01/2015	834.198	Australian Institute of Management	Experienced supervisor training course 17-19 Nov 14	\$ 1,600.00
13/01/2015	834.205	Cottesloe News Delivery	Daily newspapers delivered to Civic Centre 23 Nov - 20 Dec 14	\$ 58.80
13/01/2015	834.38	Veolia Environmental Services	Monthly site fee for depot bin	\$ 82.50
13/01/2015	834.41	Baileys Fertilisers	Supply/apply Turf Gold - Jasper Green & Grant Marine Park	\$ 1,614.80
13/01/2015	834.579	Western Power	Relocation of two streetlights on Napoleon Street	\$ 7,016.00
13/01/2015	834.609	WA Rangers Association	Renewal of annual memberships	\$ 150.00
13/01/2015	834.62	Bunning's Group Ltd	Hardware supplies	\$ 700.52
13/01/2015	834.645	Cobblestone Concrete	Footpath repairs on Rosendo and George streets	\$ 3,300.00
13/01/2015	834.650	Coates Hire Operations Pty Ltd	Variable message boards - New Year's Eve	\$ 606.00
13/01/2015	834.651	E & MJ Roshier Pty Ltd	Repairs to Kubota mower	\$ 97.45
13/01/2015	834.75	Safety Zone Australia Pty Ltd	Safety glasses and safety wear	\$ 505.40
13/01/2015	834.77	Galvins Plumbing Supplies	Plumbing supplies	\$ 9.66
13/01/2015	834.79	Perth Irrigation Centre	Irrigation hardware supplies	\$ 200.09
13/01/2015	834.830	Waste Management Assoc of Australia	Annual membership 1 Jul - 31 Dec 15	\$ 135.00
13/01/2015	834.85	Western Metropolitan Regional Council	Transfer station waste disposal	\$ 22,650.32
13/01/2015	834.88	Managed IT Pty Ltd	IT services	\$ 10,046.18
13/01/2015	834.891	Austral Mercantile Collections Pty	Rates debt recovery - Dec 14	\$ 62.15
13/01/2015	834.955	Minuteman Press	2000 Carol song sheets and ten copies - annual financial statements	\$ 1,233.54
13/01/2015	834.986	Colleagues Printing Solutions	500 Residential Parking Permits	\$ 1,507.80
19/01/2015	835.1721	Business Fuel Cards Pty Ltd	Fuel for fleet vehicles - Dec 14	\$ 6,231.76
20/01/2015	836.101	Airflow Maintenance Company	Completion of installation of air conditioner at Civic Centre	\$ 10,114.50
20/01/2015	836.111	Murphy's Electrical Company	Electrical work at No 2 car park Marine/Napier	\$ 1,948.65
20/01/2015	836.1131	Globe Australia Pty Ltd	Application of Primo Turf - various locations	\$ 1,116.50
20/01/2015	836.114	Creation Landscape Supplies	Building supplies	\$ 135.48
20/01/2015	836.122	Jackson McDonald Lawyers	Legal advice -	\$ 6,748.15
20/01/2015	836.1237	Dale's Dairy Dash	Weekly milk supplies for Nov, Dec and Jan	\$ 403.30
20/01/2015	836.141	BOC Limited	Annual container service charge from 1 Jan - 31 Dec 15	\$ 207.90
20/01/2015	836.1457	Church of Christ	Delivery 3600 leaflets for Australia Day	\$ 396.00
20/01/2015	836.1459	Carald Pty Ltd	Stage hire - Carols by Candlelight 2014	\$ 4,004.00
20/01/2015	836.146	Bring Couriers	Courier service	\$ 53.69
20/01/2015	836.1481	Battery World O'Connor	Battery for Kubota mower	\$ 95.00
20/01/2015	836.1582	Snap Claremont	Plan printing	\$ 44.50
20/01/2015	836.1583	Information Proficiency	Records training/mentoring - Dec 14	\$ 735.63
20/01/2015	836.1589	iCLOUD Services	Updating agenda and minutes preparation	\$ 2,144.00
20/01/2015	836.1591	Labourforce Impex Personnel Pty Ltd	Temporary depot staff w/e 11 Jan 15	\$ 1,314.63
20/01/2015	836.1626	Young's Plumbing Service Pty Ltd	Supply and install three cisterns at Shine Community Care	\$ 880.00
20/01/2015	836.1653	Chamberlain Dean Pty Ltd	Temporary depot staff w/e 9 Jan 15	\$ 1,439.36
20/01/2015	836.17	Post Newspaper Pty Ltd	Cott page publication 13 Dec 14	\$ 1,430.00



<u>Date</u>	<u>Payment Reference</u>	<u>Payee</u>	<u>Description</u>	<u>Amount</u>
20/01/2015	836.1794	Express Salary Packaging Pty Ltd	GST on lease vehicle 1EEX663	\$ 54.08
20/01/2015	836.1846	Brookwell Irrigation	Located and replaced solenoid - Main beach	\$ 396.00
20/01/2015	836.1856	Whelans Australia Pty Ltd	Professional services Nov - Dec 14	\$ 5,547.30
20/01/2015	836.1857	Apex Ceilings and Partitions	Ceiling & gyprock repairs to Civic Centre	\$ 2,112.00
20/01/2015	836.19	McLeods Barristers & Solicitors	Legal Advice	\$ 634.51
20/01/2015	836.24	Iron Mounttain Australia Pty Ltd	Offsite management of records - Dec 14	\$ 144.84
20/01/2015	836.35	Cottesloe IGA	Supplies for plastic free event 17 Jan 15	\$ 47.08
20/01/2015	836.37	Staples Australia Pty Ltd	Hardware supplies	\$ 65.41
20/01/2015	836.49	Charles Service Company	Cleaning services for Dec 14	\$ 6,378.64
20/01/2015	836.62	Bunning's Group Ltd	Hardware supplies	\$ 250.90
20/01/2015	836.650	Coates Hire Operations Pty Ltd	Three portaloos for New Years Eve 2014	\$ 403.22
20/01/2015	836.759	Adshel Street Furniture Pty Ltd	Advertising 2014/2015 Cot Cat bus services	\$ 1,298.00
20/01/2015	836.84	West Australian Local Government Association	Marketforce advertising - Dec 14	\$ 1,391.02
20/01/2015	836.89	Major Motors Pty Ltd	Service 3T truck 1DNEF376	\$ 183.15
20/01/2015	836.955	Minuteman Press	Scan/burn CD Council & Committee Agenda	\$ 430.10
20/01/2015	836.998	Road Signs Australia Pty Ltd	Permanent bollard for Seaview Golf club	\$ 249.70
20/01/2015	837.1774	Express Salary Packaging Pty Ltd	Payroll Deduction	\$ 866.35
20/01/2015	837.3	Department of Human Services	Payroll Deduction	\$ 214.80
20/01/2015	837.5	LGRCEU	Payroll Deduction	\$ 155.20
27/01/2015	838.128	Total Packaging (WA) Pty Ltd	Biodegradable and compostable waste bags	\$ 5,033.60
27/01/2015	838.1286	Total Eden Pty Ltd	Irrigation supplies	\$ 460.00
27/01/2015	838.1361	Department of Transport	Vehicle ownership search - Dec 14	\$ 2,920.70
27/01/2015	838.139	Australia Post	Daily mail delivered and collected - Dec 14	\$ 1,250.37
27/01/2015	838.1464	D U Electrical Pty Ltd	Inspect/diagnosed starter fault - main beach	\$ 784.30
27/01/2015	838.1479	Environmental Wastewater C S Pty Ltd	Road sweeping - Dec 14	\$ 5,469.75
27/01/2015	838.1576	Edinger Real Estate	Rental adjustment from 1 Nov 14 - 28 Feb 15	\$ 7,333.39
27/01/2015	838.1582	Snap Claremont	Plan printing	\$ 10.50
27/01/2015	838.1591	Labourforce Impex Personnel Pty Ltd	Temporary depot staff w/e 18 Jan 15	\$ 1,677.28
27/01/2015	838.1630	P Miller	Reimbursement for bricks - Napoleon St paving artwork samples	\$ 7.90
27/01/2015	838.1653	Chamberlain Dean Pty Ltd	Temporary depot staff w/e 16 Jan 15	\$ 1,826.06
27/01/2015	838.1733	Grand Toyota	Mobile service 1EJV942	\$ 406.30
27/01/2015	838.188	Bob Jane T-Mart	Replaced tyres for Kubota mower	\$ 329.00
27/01/2015	838.35	Cottesloe IGA	Catering supplies	\$ 40.51
27/01/2015	838.37	Staples Australia Pty Ltd	Stationery order	\$ 575.19
27/01/2015	838.45	Town of Mosman Park	Age Friendly Communities Contributions	\$ 241.50
27/01/2015	838.504	L & L Design Services	Design services	\$ 1,380.00
27/01/2015	838.505	Melville Mazda	20,000klm service 1EJ1913	\$ 444.15
27/01/2015	838.540	Kerb Doctor	Kerb repairs - various locations	\$ 1,425.60
27/01/2015	838.608	Stewie Valentine Painting Service	Prepared/repainted gyprock - four areas	\$ 755.70
27/01/2015	838.650	Coates Hire Operations Pty Ltd	Pick up variable message board	\$ 231.00

<u>Date</u>	<u>Payment Reference</u>	<u>Payee</u>	<u>Description</u>	<u>Amount</u>
27/01/2015	838.661	T-Quip	50hr service on road sweeper 1EQA068	\$ 723.10
27/01/2015	838.85	Western Metropolitan Regional Council	Transfer station waste disposal	\$ 18,157.93
2/01/2015		National Australia Bank	Bank fees	\$ 36.75
2/01/2015		Commonwealth Bank of Australia	Bank fees	\$ 86.44
2/01/2015		National Australia Bank	Bank fees	\$ 229.03
2/01/2015		National Australia Bank	Bank fees	\$ 553.27
7/01/2015		National Australia Bank	Transfer to investment account	\$ 375,000.00
14/01/2015		Town of Cottesloe Staff	Fortnightly payroll	\$ 89,417.32
15/01/2015		National Australia Bank	Transfer to investment account	\$ 250,000.00
22/01/2015		National Australia Bank	Bank fees	\$ 99.97
28/01/2015		Town of Cottesloe Staff	Fortnightly payroll	\$ 86,958.12
30/01/2015		National Australia Bank	Bank fees	\$ 241.40
30/01/2015		National Australia Bank	Bank fees	\$ 273.96
30/01/2015		National Australia Bank	Bank fees	\$ 282.96
30/01/2015		National Australia Bank	Bank fees	\$ 392.52
30/01/2015		National Australia Bank	Bank fees	\$ 1,116.39
			<b>Grand Total:</b>	<b>\$ 1,398,139.12</b>

Pursuant to Regulation of 13(4) of the local Government (Financial Management) Regulations the total of all other outstanding accounts for payment as at the date of this payment listing being prepared is \$736,310.40

I hereby certify that the above schedule of accounts totalling \$1,398,139.12 as submitted to the Works & Corporate Services Committee meeting held on 17 February 2015

\_\_\_\_\_  
Signed (Chairperson of the Works & Corporate Services Committee)

**TOWN OF COTTESLOE**  
**RESERVES - CASH BACKED INVESTMENTS**  
**FOR THE PERIOD ENDING 31 JANUARY 2015**

	2014-2015 ACTUAL \$	2014-2015 BUDGET \$
<b>1 Area Improvement</b>		
Purpose: To fund the cost of improving facilities within the Municipality.		
Opening Balance	34	-
Transfer to Reserves	-	-
Transfer from Reserves	-	-
	34	-
<b>2 Waste Management Reserve</b>		
Purpose: To fund the improvement, replacement and expansion of waste management plant, equipment, facilities and services.		
Opening Balance	-	10,053
Transfer to Reserves	-	2,627
Transfer from Reserves	-	-
Closing Balance	-	12,680
<b>3 Parking Reserve</b>		
Purpose: To set aside funds from developers for the development of parking facilities		
Opening Balance	10,024	14,845
Transfer to Reserves	186	520
Transfer from Reserves	-	-
Closing Balance	10,210	15,365
<b>4 Leave Reserve</b>		
Purpose: To set asides funds to assist with the funding of unexpected employee entitlements		
Opening Balance	175,249	174,514
Transfer to Reserves	3,255	6,108
Transfer from Reserves	-	-
Closing Balance	178,504	180,622
<b>5 Civic Centre Reserve</b>		
Purpose: To fund the cost of upgrading the civic centre.		
Opening Balance	342	1,410
Transfer to Reserves	6	42
Transfer from Reserves	-	(1,452)
Closing Balance	348	-
<b>6 Property Reserve</b>		
Purpose: To contribute towards future property construction/renewal.		
Opening Balance	378,993	310,441
Transfer to Reserves	7,039	13,410
Transfer from Reserves	-	-
Closing Balance	386,032	323,851

**TOWN OF COTTESLOE**  
**RESERVES - CASH BACKED INVESTMENTS**  
**FOR THE PERIOD ENDING 31 JANUARY 2015**

	2014-2015 ACTUAL \$	2014-2015 BUDGET \$
<b>7 Infrastructure Reserve</b>		
Purpose: To contribute towards future infrastructure construction/renewal.		
Opening Balance	298,439	349,114
Transfer to Reserves	5,543	12,219
Transfer from Reserves	-	-
Closing Balance	<u>303,982</u>	<u>361,333</u>
<b>8 Unspent Grants/Funds Reserve</b>		
Purpose: To account for unspent grants/funds at year end		
Opening Balance	258	-
Transfer to Reserves	5	-
Transfer from Reserves	-	-
Closing Balance	<u>263</u>	<u>-</u>
<b>9 Legal Reserve</b>		
Purpose: To provide funds to provide for legal expenses		
Opening Balance	65,481	65,211
Transfer to Reserves	1,216	2,282
Transfer from Reserves	-	-
Closing Balance	<u>66,697</u>	<u>67,493</u>
<b>10 Parking Facilities Reserve</b>		
Purpose: To provide funds to provide for parking facilities		
Opening Balance	150,303	151,132
Transfer to Reserves	2,791	5,290
Transfer from Reserves	-	-
Closing Balance	<u>153,094</u>	<u>156,422</u>
<b>11 Sustainability Reserve</b>		
Purpose: To fund new or enhance existing Sustainability initiatives within the Town of Cottesloe		
Opening Balance	20,382	19,782
Transfer to Reserves	379	8,192
Transfer from Reserves	-	(5,000)
	<u>20,761</u>	<u>22,974</u>
<b>11 Depot Funds Reserve</b>		
Purpose: To fund the improvement of infrastructure within the suburb of Cottesloe		
Opening Balance	-	-
Transfer to Reserves	-	8,310,000
Transfer from Reserves	-	-
	<u>-</u>	<u>8,310,000</u>
<b>Sub Total</b>	<u>1,119,924</u>	<u>9,450,740</u>

**TOWN OF COTTESLOE**  
**RESERVES - CASH BACKED INVESTMENTS**  
**FOR THE PERIOD ENDING 31 JANUARY 2015**

	2014-2015 ACTUAL \$	2014-2015 BUDGET \$
<b>12 Combined Library Reserve</b>		
Purpose: To fund improvements at the Library		
Opening Balance	83,441	-
Transfer to Reserves	-	-
Transfer from Reserves	-	-
	<u>83,441</u>	<u>-</u>
<b>TOTAL RESERVES</b>	<u><u>1,203,365</u></u>	<u><u>9,450,740</u></u>

# TOWN OF COTTESLOE

## INVESTMENTS

SCHEDULE OF INVESTMENTS HELD AS AT 31 JANUARY 2015

BANK	RATE %	TERM	MATURITY DATE	MUNICIPAL INVESTMENTS	RESERVE FUND	COMMENTS
NATIONAL AUSTRALIA BANK	3.45%	91 DAYS	30-Mar-15	5,543.77	\$	COTTESLOE PRIMARY SCHOOL
NATIONAL AUSTRALIA BANK	3.45%	91 DAYS	30-Mar-15	5,486.10	\$	NORTH COTT PRIMARY SCHOOL
NATIONAL AUSTRALIA BANK	3.45%	90 DAYS	30-Mar-15	454,928.47	\$	TERM INVESTMENT
WESTPAC	3.37%	90 DAYS	27-Feb-15	479,310.14	\$	TERM INVESTMENT
BANKWEST	3.40%	91 DAYS	16-Feb-15	781,103.38	\$	TERM INVESTMENT
NATIONAL AUSTRALIA BANK	3.45%	89 DAYS	11-Feb-15	504,315.07	\$	TERM INVESTMENT
COMMONWEALTH BANK OF AUSTRALIA	3.35%	120 DAYS	24-Mar-15	483,882.08	\$	TERM INVESTMENT
COMMONWEALTH BANK OF AUSTRALIA	3.43%	182 DAYS	2-Feb-15	460,000.00	\$	TERM INVESTMENT
WESTPAC	3.43%	91 DAYS	30-Mar-15		78,722.91	RESERVE FUND INVESTMENTS
BANKWEST	3.40%	90 DAYS	17-Mar-15		157,868.30	RESERVE FUND INVESTMENTS
COMMONWEALTH BANK OF AUSTRALIA	3.31%	90 DAYS	28-Apr-15		510,709.31	RESERVE FUND INVESTMENTS
NATIONAL AUSTRALIA BANK	3.45%	90 DAYS	10-Feb-15		372,623.91	RESERVE FUND INVESTMENTS
<b>TOTAL</b>					<b>\$3,174,569.01</b>	<b>\$1,119,924.43</b>

BANK	\$	%
NATIONAL	\$1,342,897.32	31.27
WESTPAC	\$558,033.05	12.99
BANKWEST	\$938,971.68	21.86
COMMONWEALTH	\$1,454,591.39	33.87
<b>TOTAL</b>	<b>\$4,294,493.44</b>	<b>100.00</b>

# TOWN OF COTTESLOE

## LOANS

SCHEDULE OF LOANS HELD AS AT 31 JANUARY 2015

BANK	REF NO.	RATE %	PERIOD	MATURITY DATE	BALANCE OWING	LAST INSTALMENT DATE	NEXT INSTALMENT DATE	CURRENT LIABILITY	NON-CURRENT LIABILITY	COMMENTS
WA TREASURY	105	6.22%	15 YEARS	6-Oct-23	\$267,950.92	6-Oct-14	6-Apr-15	\$11,330.73	\$256,620.19	SEA VIEW GOLF CLUB
WA TREASURY	106	5.25%	10 YEARS	3-Apr-19	\$822,923.82	3-Oct-14	3-Apr-15	\$82,249.45	\$740,674.37	CAPITAL PROJECT - CIVIC CENTRE
WA TREASURY	107	6.51%	20 YEARS	16-Sep-29	\$4,235,486.78	16-Sep-14	16-Mar-15	\$85,409.63	\$4,150,077.15	CAPITAL PROJECT - JOINT LIBRARY
					<u>\$5,326,361.52</u>			<u>\$178,989.81</u>	<u>\$5,147,371.71</u>	
LOANS TO OTHER ENTITIES					\$267,950.92			\$11,330.73	\$256,620.19	
LOANS FOR TOC					\$5,058,410.60			\$167,659.08	\$4,890,751.52	
					<u>\$5,326,361.52</u>			<u>\$178,989.81</u>	<u>\$5,147,371.71</u>	

TOWN OF COTTESLOE

SUNDRY DEBTORS REPORT AS AT 31 JANUARY 2015

<u>Debtor Number</u>	<u>Nature Of Debt</u>	<u>3+ Months</u>	<u>2+ Months</u>	<u>1+ Month</u>	<u>Current</u>	<u>Balance</u>	<u>Status</u>
442	Health fees	\$2,900.00	\$0.00	\$0.00	\$0.00	\$2,900.00	Statement sent
530	Health fees etc	\$2,718.75	\$0.00	\$0.00	\$644.67	\$3,363.42	Statement sent
13	Waste collection charges	\$2,370.45	\$0.00	\$0.00	\$0.00	\$2,370.45	Debt recovery
128	Waste collection charges	\$1,644.50	\$0.00	\$0.00	\$0.00	\$1,644.50	Statement sent
12	Waste collection charges	\$1,539.20	\$0.00	\$0.00	\$1,539.20	\$3,078.40	Statement sent
498	Reinstatement charges	\$1,311.20	\$0.00	\$0.00	\$0.00	\$1,311.20	Statement sent
440	Waste collection charges	\$1,249.30	\$0.00	\$0.00	\$1,249.30	\$2,498.60	Statement sent
43	Waste collection charges	\$1,099.28	\$0.00	\$637.43	\$1,099.28	\$2,835.99	Statement sent
293	Venue hire	\$950.00	\$0.00	\$0.00	\$0.00	\$950.00	Statement sent
479	Waste collection charges	\$749.58	\$0.00	\$0.00	\$749.58	\$1,499.16	Statement sent
403	Venue hire	\$675.00	\$0.00	\$4,520.00	\$0.00	\$5,195.00	Statement sent
393	Health fees	\$515.00	\$0.00	\$0.00	\$0.00	\$515.00	Statement sent
3	Waste collection charges	\$512.76	\$0.00	\$0.00	\$0.00	\$512.76	Statement sent
26	Waste collection charges	\$460.24	\$0.00	\$0.00	\$539.76	\$1,000.00	Statement sent
444	Waste collection charges	\$455.00	\$0.00	\$0.00	\$455.00	\$910.00	Statement sent
491	Waste collection charges	\$455.00	\$0.00	\$0.00	\$455.00	\$910.00	Statement sent
78	Waste collection charges	\$429.78	\$0.00	\$0.00	\$429.78	\$859.56	Statement sent
49	Waste collection charges	\$364.72	\$0.00	\$0.00	\$634.92	\$999.64	Statement sent
448	Waste collection charges	\$319.80	\$0.00	\$0.00	\$319.80	\$639.60	Statement sent
74	Waste collection charges	\$239.92	\$0.00	\$0.00	\$124.93	\$364.85	Statement sent
481	Waste collection charges	\$239.92	\$0.00	\$0.00	\$124.93	\$364.85	Statement sent
299	Waste collection charges	\$159.90	\$0.00	\$0.00	\$159.90	\$319.80	Statement sent
454	Sale of old waste bins	\$159.78	\$0.00	\$0.00	\$0.00	\$159.78	Statement sent
98	Waste collection charges	\$124.93	\$0.00	\$0.00	\$124.93	\$249.86	Statement sent
30	Waste collection charges	\$89.96	\$0.00	\$0.00	\$89.96	\$179.92	Statement sent
410	Waste collection charges	\$89.96	\$0.00	\$0.00	\$0.00	\$89.96	Statement sent



TOWN OF COTTESLOE

SUNDRY DEBTORS REPORT AS AT 31 JANUARY 2015

<u>Debtor Number</u>	<u>Nature Of Debt</u>	<u>3+ Months</u>	<u>2+ Months</u>	<u>1+ Month</u>	<u>Current</u>	<u>Balance</u>	<u>Status</u>
518	Venue hire	\$25.00	\$0.00	\$0.00	\$0.00	\$25.00	Statement sent
155	Reimbursement	\$0.20	\$0.00	\$0.00	\$0.00	\$0.20	Statement sent
538	Removal of debris	\$0.00	\$737.00	\$0.00	\$0.00	\$737.00	Statement sent
177	Reimbursement	\$0.00	\$0.00	\$8,542.60	\$0.00	\$8,542.60	Current
174	Reimbursement	\$0.00	\$0.00	\$5,923.50	\$0.00	\$5,923.50	Current
540	Venue hire	\$0.00	\$0.00	\$345.00	\$0.00	\$345.00	Current
115	Reimbursement	\$0.00	\$0.00	\$0.00	\$15,000.00	\$15,000.00	Current
237	Reimbursement	\$0.00	\$0.00	\$0.00	\$5,256.43	\$5,256.43	Current
311	Waste collection charges	\$0.00	\$0.00	\$0.00	\$3,218.28	\$3,218.28	Current
73	Waste collection charges	\$0.00	\$0.00	\$0.00	\$3,158.22	\$3,158.22	Current
41	Waste collection charges	\$0.00	\$0.00	\$0.00	\$1,219.40	\$1,219.40	Current
245	Waste collection charges	\$0.00	\$0.00	\$0.00	\$1,069.38	\$1,069.38	Current
33	Waste collection charges	\$0.00	\$0.00	\$0.00	\$1,019.46	\$1,019.46	Current
113	Waste collection charges	\$0.00	\$0.00	\$0.00	\$910.00	\$910.00	Current
95	Waste collection charges	\$0.00	\$0.00	\$0.00	\$789.62	\$789.62	Current
16	Waste collection charges	\$0.00	\$0.00	\$0.00	\$679.64	\$679.64	Current
298	Waste collection charges	\$0.00	\$0.00	\$0.00	\$679.64	\$679.64	Current
133	Waste collection charges	\$0.00	\$0.00	\$0.00	\$544.96	\$544.96	Current
101	Waste collection charges	\$0.00	\$0.00	\$0.00	\$539.76	\$539.76	Current
55	Waste collection charges	\$0.00	\$0.00	\$0.00	\$499.72	\$499.72	Current
107	Waste collection charges	\$0.00	\$0.00	\$0.00	\$449.80	\$449.80	Current
34	Waste collection charges	\$0.00	\$0.00	\$0.00	\$339.82	\$339.82	Current
11	Waste collection charges	\$0.00	\$0.00	\$0.00	\$339.82	\$339.82	Current
75	Waste collection charges	\$0.00	\$0.00	\$0.00	\$295.20	\$295.20	Current
21	Waste collection charges	\$0.00	\$0.00	\$0.00	\$270.62	\$270.62	Current
81	Waste collection charges	\$0.00	\$0.00	\$0.00	\$269.88	\$269.88	Current

TOWN OF COTTESLOE

SUNDRY DEBTORS REPORT AS AT 31 JANUARY 2015

<u>Debtor Number</u>	<u>Nature Of Debt</u>	<u>3+ Months</u>	<u>2+ Months</u>	<u>1+ Month</u>	<u>Current</u>	<u>Balance</u>	<u>Status</u>
52	Waste collection charges	\$0.00	\$0.00	\$0.00	\$249.86	\$249.86	Current
352	Waste collection charges	\$0.00	\$0.00	\$0.00	\$249.86	\$249.86	Current
514	Waste collection charges	\$0.00	\$0.00	\$0.00	\$247.86	\$247.86	Current
176	Waste collection charges	\$0.00	\$0.00	\$0.00	\$231.00	\$231.00	Current
117	Waste collection charges	\$0.00	\$0.00	\$0.00	\$229.84	\$229.84	Current
132	Waste collection charges	\$0.00	\$0.00	\$0.00	\$209.82	\$209.82	Current
63	Waste collection charges	\$0.00	\$0.00	\$0.00	\$179.92	\$179.92	Current
478	Waste collection charges	\$0.00	\$0.00	\$0.00	\$159.90	\$159.90	Current
507	Waste collection charges	\$0.00	\$0.00	\$0.00	\$159.90	\$159.90	Current
315	Waste collection charges	\$0.00	\$0.00	\$0.00	\$124.93	\$124.93	Current
19	Waste collection charges	\$0.00	\$0.00	\$0.00	\$124.93	\$124.93	Current
35	Waste collection charges	\$0.00	\$0.00	\$0.00	\$124.93	\$124.93	Current
116	Waste collection charges	\$0.00	\$0.00	\$0.00	\$124.93	\$124.93	Current
123	Waste collection charges	\$0.00	\$0.00	\$0.00	\$124.93	\$124.93	Current
266	Waste collection charges	\$0.00	\$0.00	\$0.00	\$124.93	\$124.93	Current
416	Waste collection charges	\$0.00	\$0.00	\$0.00	\$124.93	\$124.93	Current
93	Waste collection charges	\$0.00	\$0.00	\$0.00	\$89.96	\$89.96	Current
94	Waste collection charges	\$0.00	\$0.00	\$0.00	\$89.96	\$89.96	Current
105	Waste collection charges	\$0.00	\$0.00	\$0.00	\$89.96	\$89.96	Current
119	Waste collection charges	\$0.00	\$0.00	\$0.00	\$89.96	\$89.96	Current
163	Waste collection charges	\$0.00	\$0.00	\$0.00	\$89.96	\$89.96	Current
261	Waste collection charges	\$0.00	\$0.00	\$0.00	\$89.96	\$89.96	Current
287	Waste collection charges	\$0.00	\$0.00	\$0.00	\$89.96	\$89.96	Current
347	Waste collection charges	\$0.00	\$0.00	\$0.00	\$89.96	\$89.96	Current
351	Waste collection charges	\$0.00	\$0.00	\$0.00	\$89.96	\$89.96	Current
407	Waste collection charges	\$0.00	\$0.00	\$0.00	\$89.96	\$89.96	Current

TOWN OF COTTESLOE

SUNDRY DEBTORS REPORT AS AT 31 JANUARY 2015

<u>Debtor Number</u>	<u>Nature Of Debt</u>	<u>3+ Months</u>	<u>2+ Months</u>	<u>1+ Month</u>	<u>Current</u>	<u>Balance</u>	<u>Status</u>
429	Waste collection charges	\$0.00	\$0.00	\$0.00	\$89.96	\$89.96	Current
445	Waste collection charges	\$0.00	\$0.00	\$0.00	\$89.96	\$89.96	Current
496	Waste collection charges	\$0.00	\$0.00	\$0.00	\$89.96	\$89.96	Current
25	Waste collection charges	\$0.00	\$0.00	\$0.00	\$49.59	\$49.59	Current
504	Waste collection charges	\$0.00	\$0.00	\$0.00	\$34.97	\$34.97	Current
106	Waste collection charges	\$0.00	\$0.00	\$0.00	\$6.92	\$6.92	Current
45	Overpayment	\$0.00	-\$2,095.67	\$0.00	\$749.58	-\$1,346.09	Overpayment
90	Overpayment	-\$81.25	\$0.00	\$0.00	\$0.00	-\$81.25	Overpayment
Sub Total		\$21,767.88	-\$1,358.67	\$19,968.53	\$50,093.60	\$90,471.34	
115	Loan Debtor	\$0.00	\$0.00	\$0.00	\$54,777.00	\$54,777.00	Long term agreement
Sub Total		\$0.00	\$0.00	\$0.00	\$54,777.00	\$54,777.00	
<b>TOTAL</b>		<b>\$21,767.88</b>	<b>-\$1,358.67</b>	<b>\$19,968.53</b>	<b>\$104,870.60</b>	<b>\$145,248.34</b>	



# Rates and Charges Analysis

For Financial Year 2015 Period 7, as at 2/02/2015

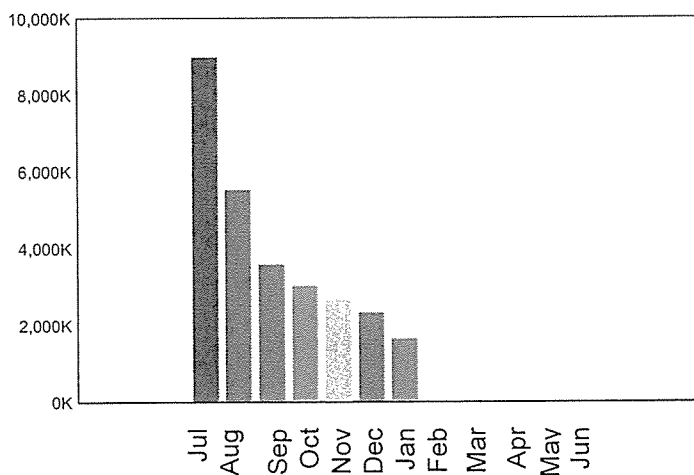
## Amounts Levied and Outstanding

Rate or Charge Type	Amount Levied This Year	Total Balance Outstanding
GRV General Rate	8,895,514.26	1,108,550.60
Additional Bin	83,746.85	28,324.54
Credit Balances	0.00	-40,284.78
Swimming Pool	8,098.75	3,282.50
ESL Category 1	1,317,339.74	497,793.63
ESL Category 5	0.00	4.05
Instalment Fees	15,940.20	14,507.40
Instalment PreInterest	34,809.44	32,158.09
	<b>10,355,449.24</b>	<b>1,644,336.03</b>

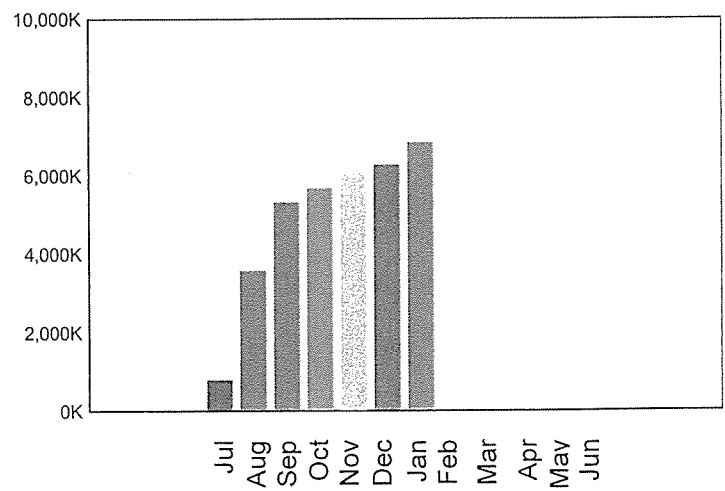
## Analysis of Outstanding Balance

Bfwd At 1 July	Levied YTD	Rebated	Received	Other Trans	Balance
260,702.06	10,355,449.24	-591,038.83	-8,411,965.60	31,189.16	<b>1,644,336.03</b>
Current	Arrears	Interest	Legal	Deferred	Balance
1,364,224.90	45,804.44	36,284.07	5,332.89	192,689.73	<b>1,644,336.03</b>

**Total Balance Outstanding By Month**



**YTD Collections By Month**



## Analysis of Assessments

Number of assessments	3,821
Number of assessments paid in full	2,226
Number of assessments with a balance outstanding	1,603
Number of assessments with arrears	252
Number of assessments on instalments	1,284
Number of assessments with pensioners or seniors	939
Number of assessments with deferred rates	28
Number of assessments with no payment yet	172

TOWN OF COTTESLOE

BUDGET AMENDMENTS - SUMMARY

FOR THE PERIOD ENDED 1 JULY 2014 TO 31 JANUARY 2015

<u>GL Account Code</u>	<u>Description</u>	<u>Council Resolution &amp; Date</u>	<u>Classification</u>	<u>Value of Budget Amendment</u>	<u>Funding Arrangement</u>
Various NEW	Payout Existing Loan No 107	10.5.1 August 2014	Reduction of Loans	\$ 4,318,204	Payout existing loans as per Depot Funds Strategy
Various NEW	Retaining Walls at the Beach	10.5.1 August 2014	Capital Expenditure	\$ 50,000	Restore retaining walls at the beach
Various NEW	Project Management Costs	10.5.1 August 2014	Capital Expenditure	\$ 70,000	Hire a project manager
Various NEW	Toilets Main Beach	10.5.1 August 2014	Capital Expenditure	\$ 1,025,000	Construction of toilet facilities
Various NEW	Town Centre Improvements	10.5.1 August 2014	Capital Expenditure	\$ 100,000	Town Centre Capital Improvements
Various NEW	June Black Dune Park	10.5.1 August 2014	Capital Expenditure	\$ 50,000	Improvements to the park
Various NEW	Lessor Hall	10.5.1 August 2014	Capital Expenditure	\$ 50,000	Improvements to the Hall
Various NEW	Shark Barrier	10.4.2 October 2014	Capital Expenditure	\$ 130,000	Installation, removal and maintenance of a shark barrier at Cottesloe beach
20202.30.50	Review/update of NAMP	10.4.7 October 2014	Operating Expenditure	\$ 18,000	Review and update of the Natural Areas Management Plan
3.4120.2.50	Remediation of Former Depot Site	9.1.1 November 2014 SM	Capital Expenditure	\$ 196,560	To be funded from the Depot Funds Reserve.

TOWN OF COTTESLOE

CAPITAL WORKS PROGRAMME  
FOR THE PERIOD ENDED 1 JULY 2014 TO 31 JANUARY 2015

	2014-2015 YTD ACTUAL \$	2014-2015 YTD BUDGET \$	2014-2015 BUDGET \$	Variations Budget to YTD Actual \$	Variations Budget to YTD Actual %
<b>LAND DEVELOPMENT</b>					
3.4120.2 Old Depot Site	244,809	0	0	244,809	100%
<b>CARPARK CONSTRUCTION</b>					
5.1171.2 Seaview Golf Course	49,358	0	0	49,358	100%
<b>DRAINAGE CONSTRUCTION</b>					
10.9000.2 Cottesloe various	43,319	11,749	20,150	31,570	73%
<b>FOOTPATH CONSTRUCTION</b>					
15.1016.2 Barsden Street	(2,500)	0	0	(2,500)	
15.1030.2 Broome Street	20,129	0	22,550	20,129	100%
15.1058.2 Elizabeth Street	13,126	0	12,250	13,126	
15.1062.2 Federal Street	2,142	0	2,250	2,142	100%
15.1116.2 Lyons Street	46,495	0	42,350	46,495	100%
15.1126.2 Marine Parade	0	0	33,050	0	
15.1128.2 Marmion Street	5,976	0	7,250	5,976	100%
15.1166.2 Salisbury Street	0	0	17,250	0	
15.1204.2 Windsor Street	0	0	7,750	0	
15.9000.5 DSAC Capital Works	1,180	0	30,200	1,180	
15.9000.2 Bike Plan Works	3,000	0	50,350	3,000	

TOWN OF COTTESLOE

CAPITAL WORKS PROGRAMME  
FOR THE PERIOD ENDED 1 JULY 2014 TO 31 JANUARY 2015

	2014-2015 YTD ACTUAL \$	2014-2015 YTD BUDGET \$	2014-2015 BUDGET \$	Variances Budget to YTD Actual \$	Variances Budget to YTD Actual %
20.9000.2	6,054	20,020	30,800	(13,966)	(231%)
<b>IRRIGATION CONSTRUCTION</b>					
	Cottesloe, various				
30.6120.2	10,260	0	0	10,260	
<b>PARKS AND RESERVES CONSTRUCTION</b>					
	John Black Dune Reserve				
30.9000.2	17,035	17,712	30,350	(677)	(4%)
	Playgrounds various				
30.9000.5	6,657	9,337	16,000	(2,680)	(40%)
	Cottesloe Natural Area Upgrade				
<b>PROPERTY CONSTRUCTION</b>					
35.1171.2	99,595	0	0	99,595	100%
	Seaview Golf Course Clubhouse				
35.4052.2	0	46,756	80,150	(46,756)	
	Civic Centre Lesser Hall Stage 1				
35.4130.2	4,500	0	0	0	
	Indiana Tea Rooms				
35.4135.2	2,806	0	0	0	100%
	The Grove Library				
35.6030.2	101,298	116,890	200,350	(15,592)	(15%)
	Civic Centre Grounds Restoration				
25.9000.2	66,690	0	72,700	66,690	
<b>LANEWAY CONSTRUCTION</b>					

TOWN OF COTTESLOE

CAPITAL WORKS PROGRAMME  
FOR THE PERIOD ENDED 1 JULY 2014 TO 31 JANUARY 2015

	2014-2015 YTD ACTUAL \$	2014-2015 YTD BUDGET \$	2014-2015 BUDGET \$	Variances Budget to YTD Actual \$	Variances Budget to YTD Actual %
<b>ROAD CONSTRUCTION/ REHABILITATION</b>					
40.1032.2 Bryan Way	13,890	0	10,350	13,890	100%
40.1046.2 Congdon Street	17,595	0	98,250	17,595	
40.1049.2 Beach Access Road	2,967	0	20,100	2,967	
40.1068.2 Forrest Street	0	0	48,000	0	
40.1092.2 Hawkstone Street	16,030	0	12,050	16,030	100%
40.1112.2 Little Marine Parade	20,763	0	36,850	20,763	100%
40.1128.2 Marmion Street	33,189	0	52,750	33,189	100%
40.1148.2 Pearse Street	26,484	0	22,250	26,484	100%
<b>BLACKSPOT CONTRUCTION</b>					
41.1048.2 Curtin Avenue	17,427	0	0	17,427	100%
41.9000.2 Speed and Safety	3,188	0	0	3,188	100%
<b>STREETSCAPE INFRASTRUCTURE</b>					
42.1176.2 Station Street	0	11,661	20,000	(11,661)	
42.6080.2 Foreshore	0	17,498	30,000	(17,498)	
42.8999.2 Town Centre Streetscape Improvements	150,895	210,017	360,000	(59,122)	(39%)
42.9000.2 Greening Cottesloe Project	0	29,166	50,000	(29,166)	
<b>MISCELLANEOUS INFRASTRUCTURE</b>					
43.1171.2 Storage Bays - Seaview Golf Course	41,443	0	0	41,443	
43.6080.2 Viewing Tower	6,060	0	0	6,060	
43.9000.2.57 Sculpture	0	0	70,000	0	



TOWN OF COTTESLOE

CAPITAL WORKS PROGRAMME

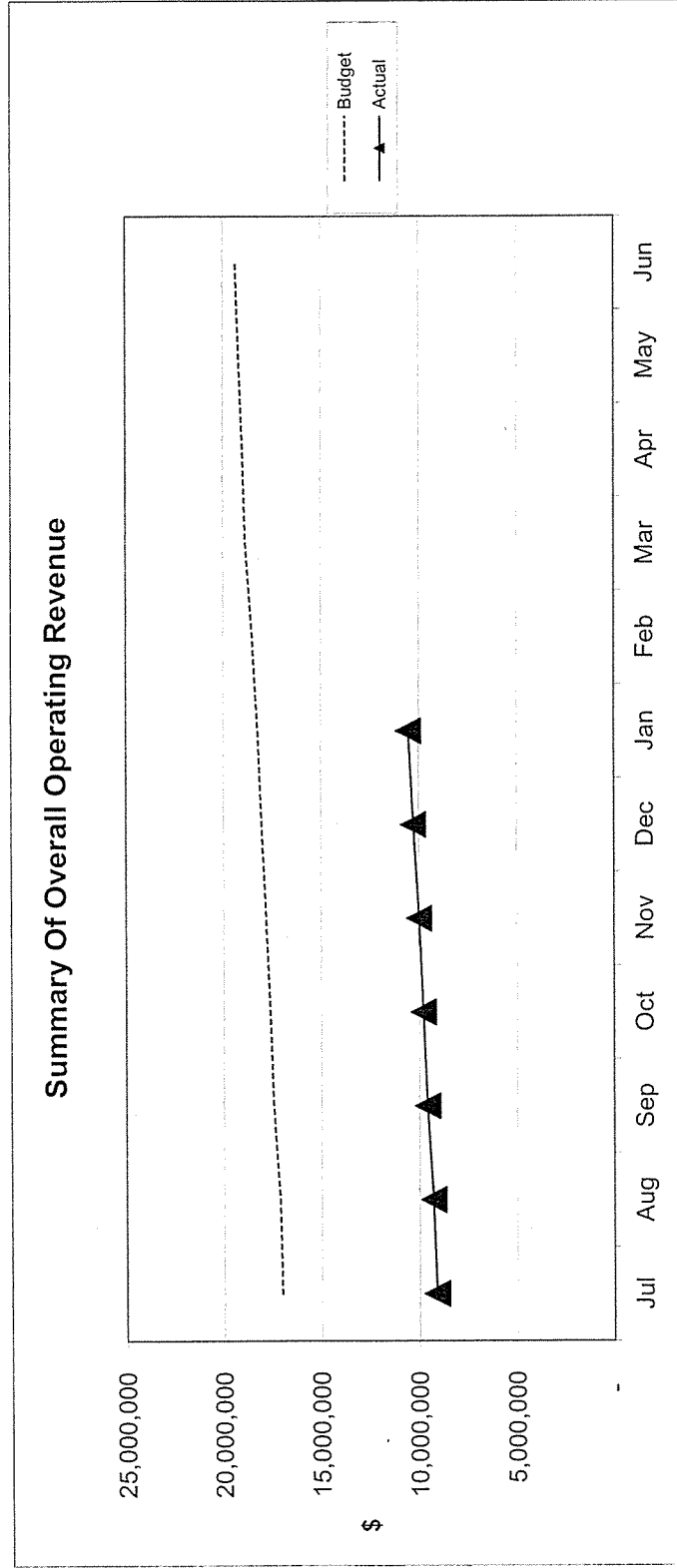
FOR THE PERIOD ENDED 1 JULY 2014 TO 31 JANUARY 2015

	2014-2015 YTD ACTUAL	2014-2015 YTD BUDGET	2014-2015 BUDGET	Variations Budget to YTD Actual	Variations Budget to YTD Actual
	\$	\$	\$	\$	%
<b>PLANT &amp; VEHICLES</b>					
47.9000.2.57	36,008	36,000	36,000	8	0%
47.9000.2.57	35,413	36,000	36,000	(587)	(2%)
47.9000.2.57	0	36,000	36,000	(36,000)	
47.9000.2.57	0	35,000	35,000	(35,000)	
47.9000.2.57	69,396	60,000	60,000	9,396	14%
47.9000.2.57	86,207	90,000	90,000	(3,793)	(4%)
47.9000.2.57	24,550	0	25,000	24,550	100%
47.9000.2.57	6,053	0	8,500	6,053	100%
47.9000.2.57	2,472	0	2,400	2,472	100%
47.9000.2.57	1,040	1,600	1,600	(560)	(54%)
47.9000.2.57	1,040	3,200	3,200	(2,160)	(208%)
47.9000.2.57	3,102	3,600	3,600	(498)	(16%)
47.9000.2.57	2,120	2,400	2,400	(280)	(13%)
47.9000.2.57	1,957	0	0	0	100%
47.9000.2.57	6,200	0	0	0	100%
<b>IT, OFFICE EQUIPMENT &amp; FURNITURE</b>					
49.9000.2.57	0	2,227	3,818	(2,227)	
49.9000.2.57	0	1,654	2,836	(1,654)	
49.9000.2.57	0	17,500	30,000	(17,500)	
49.9000.2.50	9,000	0	0	0	
<b>TOTAL</b>	<b>1,376,418</b>	<b>815,988</b>	<b>1,882,704</b>	<b>535,967</b>	<b>41%</b>

# TOWN OF COTTESLOE

## GRAPHICAL SUMMARY OF REVENUE, EXPENDITURE AND NET POSITION FOR 2014 - 2015

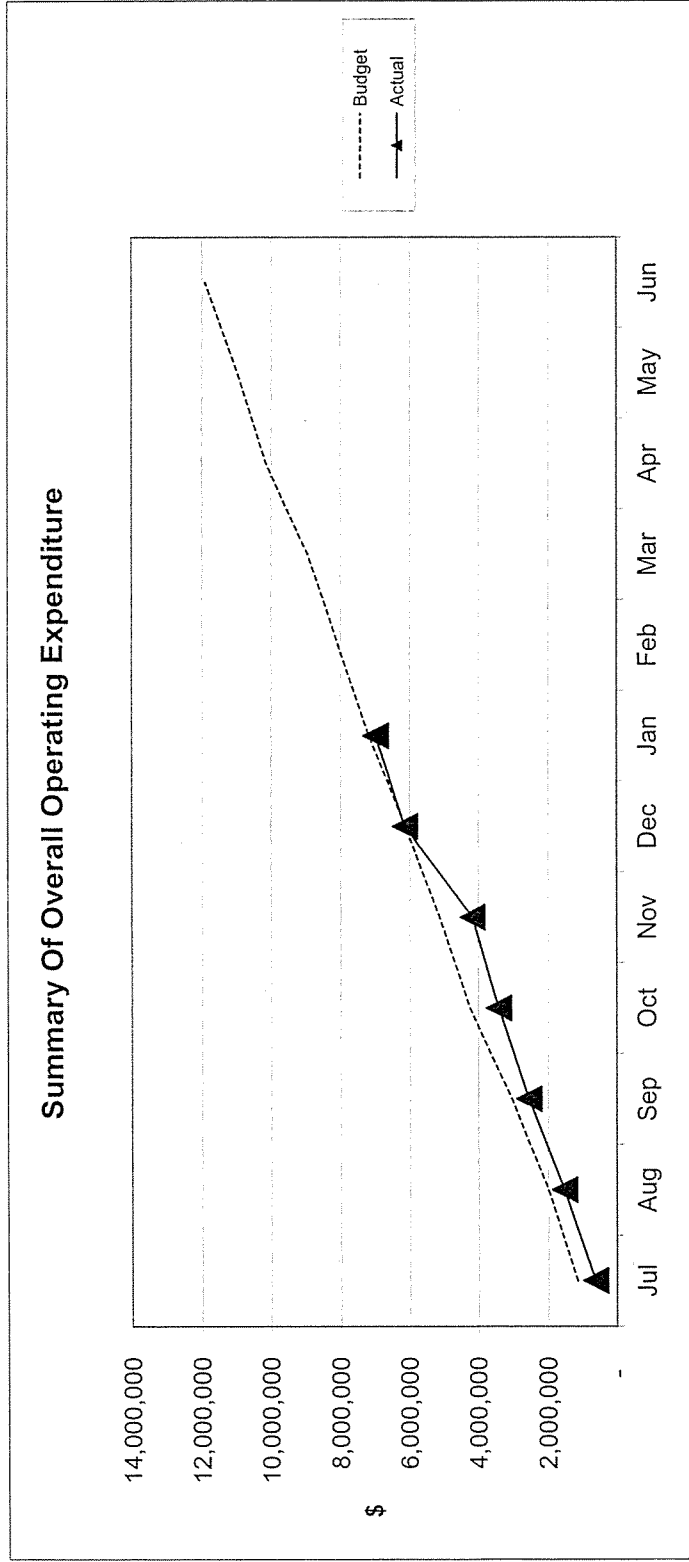
FOR THE PERIOD ENDED 1 JULY 2014 TO 31 JANUARY 2015



# TOWN OF COTTESLOE

## GRAPHICAL SUMMARY OF REVENUE, EXPENDITURE AND NET POSITION FOR 2014 - 2015

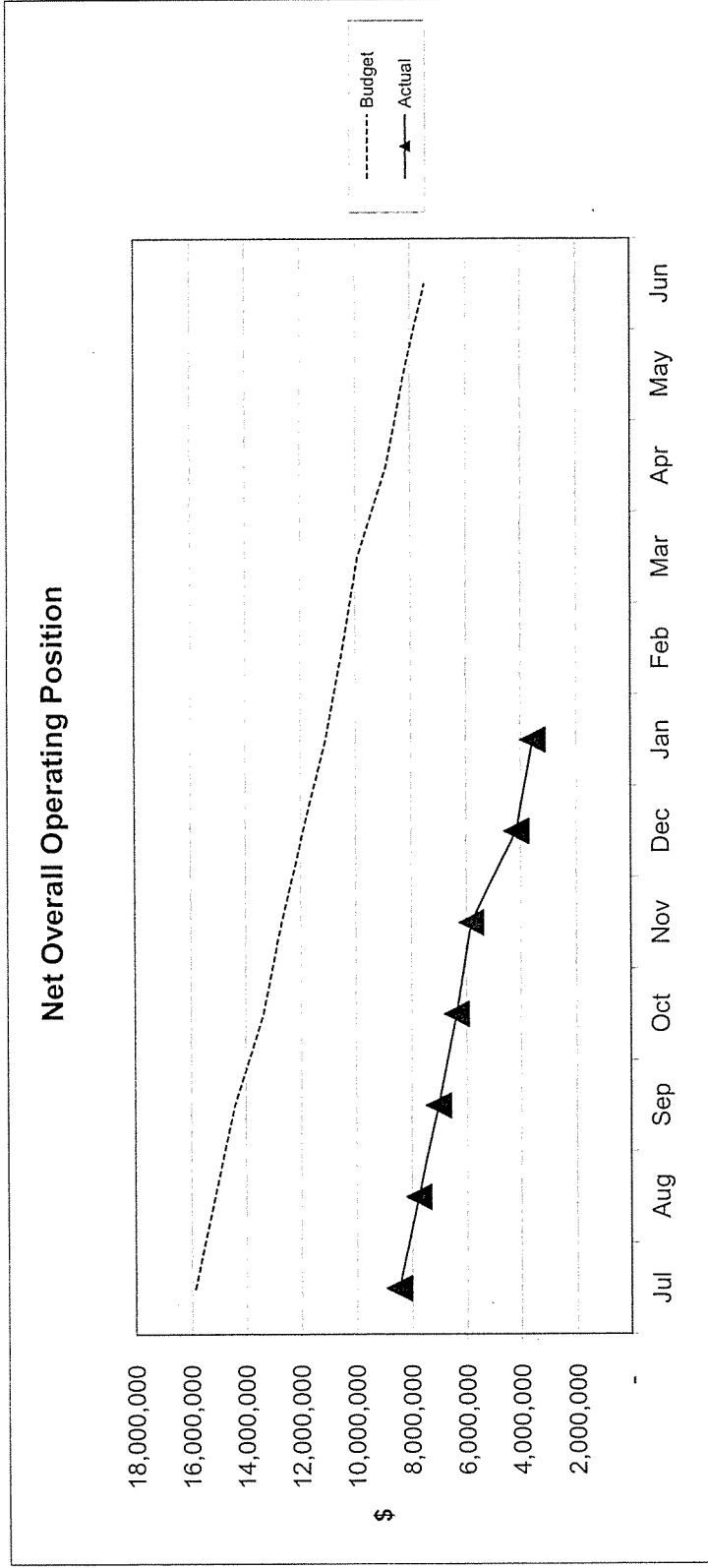
FOR THE PERIOD ENDED 1 JULY 2014 TO 31 JANUARY 2015



# TOWN OF COTTESLOE

## GRAPHICAL SUMMARY OF REVENUE, EXPENDITURE AND NET POSITION FOR 2014 - 2015

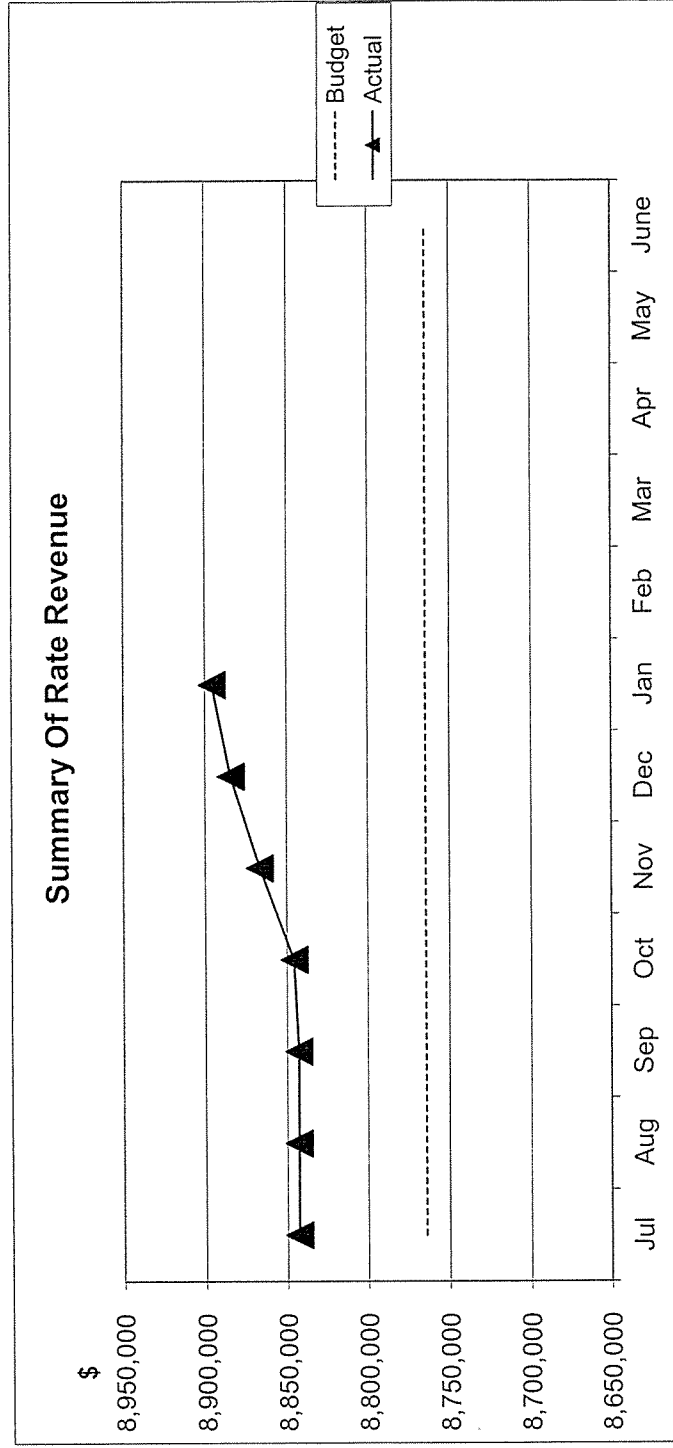
FOR THE PERIOD ENDED 1 JULY 2014 TO 31 JANUARY 2015



# TOWN OF COTTESLOE

## GRAPHICAL SUMMARY BY NATURE & TYPE FOR 2014 - 2015

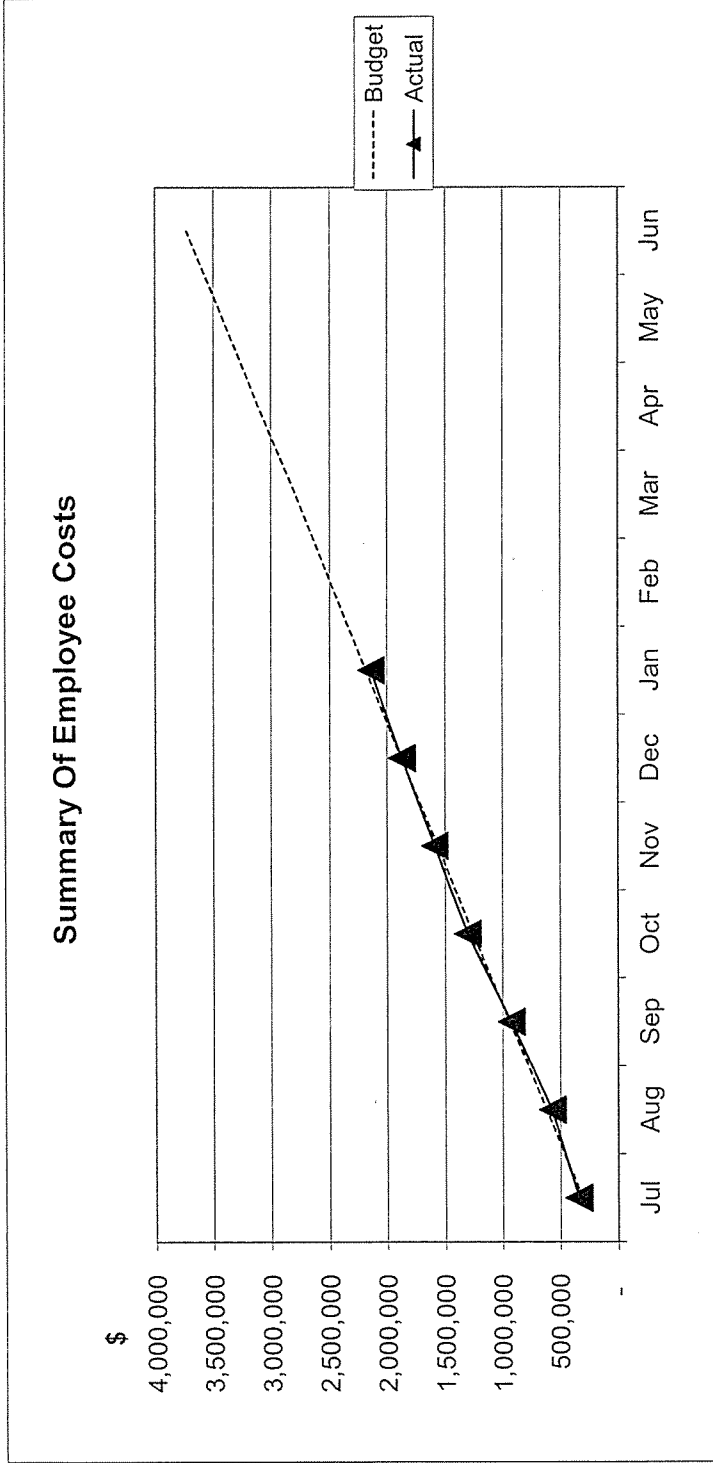
FOR THE PERIOD ENDED 1 JULY 2014 TO 31 JANUARY 2015



# TOWN OF COTTESLOE

## GRAPHICAL SUMMARY BY NATURE & TYPE FOR 2014 - 2015

FOR THE PERIOD ENDED 1 JULY 2014 TO 31 JANUARY 2015



# TOWN OF COTTESLOE

## GRAPHICAL SUMMARY BY NATURE & TYPE FOR 2014 - 2015

FOR THE PERIOD ENDED 1 JULY 2014 TO 31 JANUARY 2015

