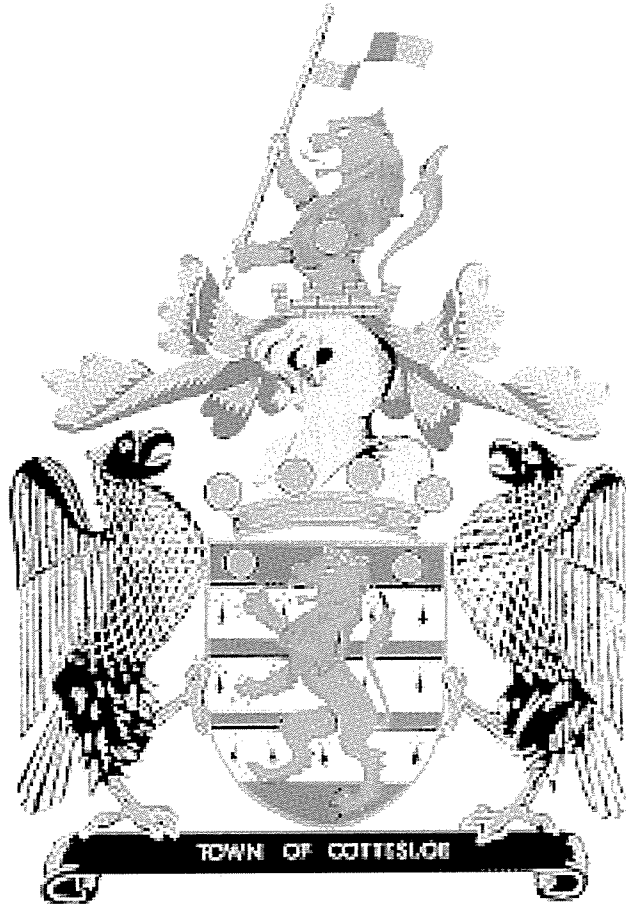


TOWN OF COTTESLOE



FINANCIAL STATEMENTS

FOR THE PERIOD 1 JULY 2013 TO 30 APRIL 2014

PRESENTED TO THE WORKS AND CORPORATE SERVICES
COMMITTEE ON 20 MAY 2014

TOWN OF COTTESLOE

FINANCIAL STATEMENTS

FOR THE PERIOD 1 JULY 2013 TO 30 APRIL 2014

TABLE OF CONTENTS

Statement of Financial Activity	1
Operating Statement By Program	2
Operating Statement By Nature & Type	3
Balance Sheet	4 - 5
Surplus/(Deficit Position)	6
Variance Analysis	7 - 11
Other Information	
- List of Payments	12 - 20
- Reserves	21 - 22
- Investments	23
- Loans	24
- Sundry Debtors	25 - 27
- Rates Analysis	28
- Capital Works Programme	29 - 33
- Budget Amendments	34
- Graphs	35 - 40

TOWN OF COTTESLOE

STATEMENT OF FINANCIAL ACTIVITY

FOR THE PERIOD ENDED 1 JULY 2013 TO 30 APRIL 2014

	2013-2014 YTD Actual \$	2013-2014 YTD Budget \$	2013-2014 Budget \$	Variances YTD Actual to YTD Budget \$	Variances YTD Actual to YTD Budget %
Operating Revenue					
General Purpose Funding	370,214	322,827	394,939	47,387	15%
Governance	70,176	50,628	53,750	19,548	39%
Law, Order and Public Safety	27,052	12,914	15,100	14,138	109%
Health	79,510	76,130	78,710	3,380	4%
Education and Welfare	33,285	23,649	30,500	9,636	41%
Community Amenities	476,994	390,717	469,005	86,277	22%
Recreation and Culture	323,862	313,000	352,842	10,862	3%
Transport	1,116,355	1,044,504	1,149,900	71,851	7%
Economic Services	178,249	102,262	122,700	75,987	74%
Other Property and Services	18,403	17,918	21,500	485	3%
Total Operating Revenue	2,694,100	2,354,549	2,688,946	339,551	14%
Operating Expenditure					
General Purpose Funding	(198,496)	(204,746)	(243,477)	6,250	3%
Governance	(519,239)	(560,661)	(680,642)	41,422	7%
Law, Order and Public Safety	(213,769)	(232,810)	(276,161)	19,041	8%
Health	(164,459)	(204,824)	(245,751)	40,365	20%
Education and Welfare	(193,593)	(199,310)	(227,957)	5,717	3%
Community Amenities	(2,655,771)	(2,585,961)	(3,105,326)	(69,810)	(3%)
Recreation and Culture	(2,677,799)	(2,941,935)	(3,406,001)	264,136	9%
Transport	(2,480,167)	(2,388,367)	(2,878,042)	(91,800)	(4%)
Economic Services	(272,116)	(342,562)	(392,524)	70,446	21%
Other Property and Services	(58,076)	(16,696)	(16,068)	(41,380)	(248%)
Total Operating Expenditure	(9,433,485)	(9,677,872)	(11,471,949)	244,387	3%
Adjustments for Non Cash					
(Profit)/Loss on Asset Disposal	43,161	0	0	43,161	
Movement in Deferred Pensioners	21,482	0	0	21,482	
Movement in Employee Benefit Provisions	55,437	0	0	55,437	
Depreciation	1,691,787	1,734,108	2,080,737	(42,321)	(2%)
Total Adjustments for Non Cash	1,811,867	1,734,108	2,080,737	77,759	4%
Capital Expense and Revenue					
Additions - Furniture & Equipment	(126,123)	(121,690)	(146,014)	(4,433)	(4%)
Additions - Land & Buildings	(300,137)	(294,848)	(331,500)	(5,289)	(2%)
Additions - Plant & Equipment	(306,092)	(357,500)	(357,500)	51,408	14%
Additions - Roads	(370,844)	(641,800)	(641,800)	270,956	42%
Additions - Car Parks	(198,295)	(204,000)	(204,000)	5,705	3%
Additions - Footpaths	(563,413)	(514,155)	(514,155)	(49,258)	(10%)
Additions - Drainage	(7,907)	(8,334)	(10,000)	427	5%
Additions - Parks & Reserves	(28,335)	(42,504)	(45,000)	14,169	33%
Additions - Miscellaneous	(170,184)	(152,000)	(202,000)	(18,184)	(12%)
Additions - Street Furniture	(139,843)	0	0	(139,843)	0%
Additions - Right of Ways	(62,059)	(81,200)	(81,200)	19,141	24%
Additions - Irrigation	(1,480)	(16,668)	(20,000)	15,188	91%
Proceeds from Disposal of Assets	159,598	179,750	179,750	(20,152)	11%
Proceeds from New Loans	0	0	0	0	0%
Principal Repayments/Disbursements	(357,642)	(357,642)	(357,642)	0	0%
Self Supporting Principal Repayments	45,755	45,755	45,755	0	0%
Transfer from Reserves	130,639	379,323	379,323	(248,684)	66%
Transfer to Reserves	(52,483)	(52,303)	(58,782)	(180)	(0%)
Total Capital Expense and Revenue	(2,348,845)	(2,239,816)	(2,364,765)	(109,029)	(5%)
Opening Surplus / (Deficit)	1,005,515	643,339	643,339	362,176	56%
Closing Surplus / (Deficit)	2,228,780	1,238,000	0	990,780	80%
AMOUNT REQUIRED FROM RATES	(8,499,628)	(8,423,692)	(8,423,692)	(75,936)	(1%)

TOWN OF COTTESLOE

OPERATING STATEMENT BY PROGRAM

FOR THE PERIOD ENDED 1 JULY 2013 TO 30 APRIL 2014

	2013-2014 Actual \$	2013-2014 YTD Budget \$	2013-2014 Budget \$	Variances Budget to YTD Actual \$	Variances Budget to YTD Actual %
Revenue from Ordinary Activities					
General Purpose Funding	8,869,843	8,746,521	8,818,633	123,322	1%
Governance	70,176	50,628	53,750	19,548	39%
Law, Order and Public Safety	27,052	12,914	15,100	14,138	109%
Health	79,510	76,130	78,710	3,380	4%
Education and Welfare	33,285	23,649	30,500	9,636	1,917%
Community Amenities	476,994	390,717	469,005	86,277	(30%)
Recreation and Culture	272,167	313,000	352,842	(40,833)	155%
Transport	798,820	445,504	550,900	353,316	(60%)
Economic Services	178,249	102,262	122,700	75,987	(82%)
Other Property and Services	18,404	17,918	21,500	486	3%
Total Operating Revenue	10,824,500	10,179,243	10,513,640	645,257	6%
Expenses from Ordinary Activities					
General Purpose Funding	(198,496)	(204,746)	(243,477)	6,250	3%
Governance	(510,961)	(559,831)	(679,642)	48,870	9%
Law, Order and Public Safety	(213,769)	(232,810)	(276,161)	19,041	8%
Health	(164,459)	(204,824)	(245,751)	40,365	20%
Education and Welfare	(193,593)	(199,310)	(227,957)	5,717	3%
Community Amenities	(2,649,520)	(2,585,961)	(3,105,326)	(63,559)	(2%)
Recreation and Culture	(2,361,290)	(2,637,087)	(3,040,209)	275,797	10%
Transport	(2,476,827)	(2,388,367)	(2,878,044)	(88,460)	(4%)
Economic Services	(272,116)	(342,562)	(392,524)	70,446	21%
Other Property and Services	(41,018)	(16,696)	(16,068)	(24,322)	(146%)
Total Operating Expenditure	(9,082,049)	(9,372,194)	(11,105,159)	290,145	3%
Borrowing Costs					
Governance	0	(830)	(1,000)	830	100%
Recreation and Culture	(303,043)	(304,848)	(365,792)	1,805	1%
Total Borrowing Costs	(303,043)	(305,678)	(366,792)	2,635	1%
Grants/Contributions for Asset Development					
Recreation and Culture	50,000	0	0	50,000	
Transport	314,000	599,000	599,000	(285,000)	(48%)
Total Grants/Contributions for Asset Development	364,000	599,000	599,000	(235,000)	(39%)
Profit/ (Loss) on Asset Disposal					
Governance	(8,278)	0	0	(8,278)	
Community Amenities	(6,251)	0	0	(6,251)	
Recreation and Culture	(11,771)	0	0	(11,771)	
Transport	196	0	0	196	
Other Property and Services	(17,058)	0	0	(17,058)	
Total Profit/ (Loss) on Asset Disposal	(43,162)	0	0	(43,162)	
NET PROFIT OR LOSS	1,760,246	1,100,371	(359,311)	659,875	60%

TOWN OF COTTESLOE

OPERATING STATEMENT BY NATURE & TYPE

FOR THE PERIOD ENDED 1 JULY 2013 TO 30 APRIL 2014

	2013-2014 YTD Actual \$	2013-2014 YTD Budget \$	2013-2014 Adopted Budget \$	Variances Budget to Actual YTD \$	Variances Budget to Actual YTD %
Operating Revenue					
Rates	8,499,628	8,423,694	8,423,694	75,934	1%
Grants - Operating	116,767	120,511	158,289	(3,744)	(3%)
Fees & Charges	1,747,215	1,219,363	1,432,180	527,852	43%
Interest Earned	226,743	185,524	219,500	41,219	22%
Other Revenue	234,146	230,151	279,977	3,995	2%
Total Operating Revenue	10,824,499	10,179,243	10,513,640	645,256	6%
Operating Expenditure					
Employee Costs	(2,830,618)	(2,994,148)	(3,649,000)	163,530	5%
Contractors and Materials	(3,376,940)	(3,414,189)	(4,000,000)	37,249	1%
Depreciation	(1,691,787)	(1,734,108)	(2,080,737)	42,321	2%
Insurance	(186,946)	(178,254)	(174,856)	(8,692)	(5%)
Interest Expense	(303,043)	(305,678)	(366,792)	2,635	1%
Utility Costs	(229,524)	(266,636)	(335,000)	37,112	14%
Other Expenses	(766,234)	(784,859)	(865,566)	18,625	2%
Total Operating Expenditure	(9,385,092)	(9,677,872)	(11,471,951)	292,780	3%
Grants/Contributions - Non Operating	364,000	599,000	599,000	(235,000)	(39%)
Profit on Asset Disposals	5,231	0	0	5,231	
Loss on Asset Disposals	(48,392)	0	0	(48,392)	
NET PROFIT OR LOSS	1,760,246	1,100,371	(359,311)	659,875	60%

TOWN OF COTTESLOE

STATEMENT OF FINANCIAL POSITION

FOR THE PERIOD 1 JULY 2013 TO 30 APRIL 2014

		2013-2014 YTD Actual	2012-2013 YTD Actual	2012-2013 Actual
CURRENT ASSETS				
Receivables				
	Rates	205,428	245,621	56,450
	Sundry Debtors	98,523	76,957	173,128
	Accrued Income	41,860	17,382	19,329
	Self Supporting Loans	0	0	45,755
	Other	0	(40)	0
Inventories				
	Stock - Books	41,554	46,125	41,554
Cash Assets				
	Municipal Account	48,611	379,476	61,590
	Till Floats	700	700	370
	Investment Account	276,278	53,671	24,588
	Term Investments	2,547,088	3,254,601	1,503,782
	Restricted - Reserves	1,219,196	456,316	1,297,386
	Restricted - Trust	651,834	572,643	599,426
TOTAL CURRENT ASSETS		5,131,072	5,103,452	3,823,358
CURRENT LIABILITIES				
Payables		202,196	340,778	166,512
Payable Trust		655,258	610,936	604,125
Accrued Expenses		832,293	796,729	704,064
Interest Bearing Liabilities		0	0	357,642
Provisions		628,829	478,854	584,942
TOTAL CURRENT LIABILITIES		2,318,576	2,227,297	2,417,285
NON CURRENT ASSETS				
Receivables				
	Deferred Rates & ESL	177,114	202,338	198,596
	Self Supporting Loans	291,857	337,611	291,857
Property Plant and Equipment				
	Furniture and Equipment	393,429	351,416	384,382
	Land and Buildings	14,750,035	12,107,928	12,097,990
	Plant and Equipment	678,861	589,139	754,885
	Equity Investments	1,055,826	1,213,798	1,055,450
Infrastructure				
	Roads	6,512,769	6,801,836	6,801,575
	Car Parks	763,456	337,286	519,473
	Footpaths	2,111,000	1,720,768	1,703,630
	Drainage	3,368,288	3,463,524	3,447,027
	Parks and Reserves	153,386	157,094	166,879
	Miscellaneous	735,289	734,072	705,554
	Street Furniture	332,055	212,651	214,356
	Right of Ways	254,077	199,237	198,170
	Irrigation	266,625	296,434	285,727
TOTAL NON CURRENT ASSETS		31,844,067	28,725,132	28,825,551
NON CURRENT LIABILITIES				
Interest Bearing Liabilities		5,513,130	5,870,772	5,513,130
Provisions		69,508	66,507	64,648
TOTAL NON CURRENT LIABILITIES		5,582,638	5,937,279	5,577,778
NET ASSETS		29,073,925	25,664,008	24,653,846

TOWN OF COTTESLOE

STATEMENT OF FINANCIAL POSITION

FOR THE PERIOD 1 JULY 2013 TO 30 APRIL 2014

	2013-2014 YTD Actual	2012-2013 YTD Actual	2012-2013 Actual
EQUITY			
Reserves - Cash Backed	1,219,232	456,318	1,297,388
Reserves - Asset Revaluation	239,554	98,818	239,554
Retained Surplus	<u>27,615,139</u>	<u>25,108,872</u>	<u>23,116,904</u>
TOTAL EQUITY	<u>29,073,925</u>	<u>25,664,008</u>	<u>24,653,846</u>
RESERVES - CASH BACKED			
Opening Balance	1,297,388	1,011,812	938,932
Transfer to Reserves	52,483	30,638	944,588
Transfer from Reserves	<u>(130,639)</u>	<u>(586,132)</u>	<u>(586,132)</u>
TOTAL RESERVES - CASH BACKED	1,219,232	456,318	1,297,388
RESERVES - ASSET REVALUATION			
Opening Balance	<u>239,554</u>	<u>98,818</u>	<u>239,554</u>
TOTAL RESERVES - ASSET REVALUATION	239,554	98,818	239,554
RETAINED SURPLUS			
Opening Balance	25,776,737	22,979,287	23,078,105
Change in Net Assets from Operations	1,760,246	1,574,091	397,255
Transfer from Reserve	130,639	586,132	586,132
Transfer to Reserve	<u>(52,483)</u>	<u>(30,638)</u>	<u>(944,588)</u>
TOTAL RETAINED SURPLUS	27,615,139	25,108,872	23,116,904
TOTAL EQUITY	<u>29,073,925</u>	<u>25,664,008</u>	<u>24,653,846</u>

TOWN OF COTTESLOE

SURPLUS/(DEFICIT) ANALYSIS

FOR THE PERIOD 1 JULY 2013 TO 30 APRIL 2014

	YTD Actual \$	2013 \$
Surplus/(Deficit)	<u>2,228,780</u>	<u>1,005,515</u>
<u>Comprises:</u>		
Cash - Unrestricted	2,869,253	1,587,324
Cash - Restricted	1,219,196	1,370,267
Unspent Grant Transfer	0	3,006
Rates - Current	205,428	56,450
Sundry Debtors	98,523	173,128
Accrued Income	41,680	19,329
GST Receivable	0	53,780
Other Tax Debtors	0	295
Inventories		
- History Books	41,554	41,554
<u>Less:</u>		
Reserves - Restricted Cash	(1,219,196)	(1,370,267)
Sundry Creditors	(202,196)	(152,768)
Accrued Expenses	(726,480)	(459,013)
Accrued Interest on Debentures	(40,432)	(104,205)
Accrued Salaries and Wages	(65,385)	(140,846)
Other Tax Liabilities	0	(72,519)
Current Employee Benefits Provision	(628,829)	(584,942)
Change in RDO	6,690	0
Other	145	0
Add back: Component of Leave Liability not required to be funded	628,829	584,942
Surplus/(Deficit)	<u>2,228,780</u>	<u>1,005,515</u>

TOWN OF COTTESLOE

STATEMENT OF FINANCIAL ACTIVITY - VARIANCE ANALYSIS
FOR THE PERIOD ENDED 1 JULY 2013 TO 30 APRIL 2014

Note 2. VARIANCES (Report on material variances from the Statement of Financial Activity)
(Material variances are deemed to be greater than 15% or \$25,000)

OPERATING REVENUE

<u>Program/Nature & Type</u>	<u>YTD Actual</u> \$	<u>YTD Budget</u> \$	<u>Variance</u> \$	<u>Variance</u> %	<u>Impact of Variation</u>	<u>Main Factors</u> \$	<u>Manager</u>	<u>Officer</u>	<u>Main Factors Influencing Variance</u>
General Purpose Funding	370,214	322,827	47,387	15%	Extra revenue	35,188	FM	FM	Extra investment income
Governance	70,176	50,628	19,548	39%	Extra revenue	21,366	FM	FM	Extra income from reimbursements
Law, Order & Public Safety	27,052	12,914	14,138	109%	Extra revenue	9,274	FM	FM	Extra income from animal registrations
Education & Welfare	33,285	23,649	9,636	41%	Timing	5,663	FM	FM	Timing of fees and charges
Community Amenities	476,994	390,717	86,277	22%	Extra revenue	60,682	MDS	MDS	Extra revenue from town planning fees
					Extra revenue	10,309	MDS	SO	Extra income from the sale of a renewable energy certificate
					Extra revenue	15,650	MDS	MDS	Extra revenue from commercial waste collection fees
Transport	1,116,355	1,044,504	71,851	7%	Extra revenue	341,135	MCCS	SR	Extra revenue from parking
					Mainly Timing	(285,000)	MES	MES	Mainly timing of grant contributions, except for one project that has been cancelled
Economic Services	178,249	102,262	75,987	74%	Extra revenue	75,530	BS	BS	Extra fees relating to building control

TOWN OF COTTESLOE

STATEMENT OF FINANCIAL ACTIVITY - VARIANCE ANALYSIS
FOR THE PERIOD ENDED 1 JULY 2013 TO 30 APRIL 2014

Note 2. VARIANCES (Report on material variances from the Statement of Financial Activity)

OPERATING EXPENDITURE

<u>Program/Nature & Type</u>	<u>YTD Actual</u> \$	<u>YTD Budget</u> \$	<u>Variance</u> \$	<u>Variance</u> %	<u>Impact of Variation</u>	<u>Main Factors</u> \$	<u>Manager</u>	<u>Officer</u>	<u>Main Factors Influencing Variance</u>
Governance	(519,239)	(560,661)	41,422	7%	Possible savings Mainly Timing Timing/Possible savings	43,164 42,114 36,093	FM FM FM	FM FM FM	Training expenses less than anticipated Software licence fees less than anticipated Contractors less than anticipated
					Non Cash Extra expenditure Mainly offset Mainly offset	(55,437) (16,256) 21,801 (31,685)	FM CEO FM CEO	FM EA FM MCCS	Non cash movement in employee leave entitlements Meeting fees more than anticipated Timing of other employee costs Wages more than anticipated
Health	(164,459)	(204,824)	40,365	20%	Possible savings Possible savings	18,877 7,504	PEHO PEHO	PEHO PEHO	Timing of health wages and superannuation Legal expenses less than anticipated
Community Amenities	(2,655,771)	(2,585,961)	(69,810)	(3%)	Extra Expenditure Timing Extra Expenditure Timing/Possible savings	(60,111) 35,163 (69,365) 35,327	MES MDS MDS MDS	MES PEHO MDS MDS	Extra contractor expenses for general waste removal from the Depot Less than anticipated waste collection and disposal expenses Contractors in Town Planning ahead of budget expectations due to the work on the new toilet blocks and the Teisira SAT appeal Sustainability projects expenditure less than anticipated

TOWN OF COTTESLOE

STATEMENT OF FINANCIAL ACTIVITY - VARIANCE ANALYSIS
FOR THE PERIOD ENDED 1 JULY 2013 TO 30 APRIL 2014

Note 2. VARIANCES (Report on material variances from the Statement of Financial Activity)

OPERATING EXPENDITURE (Continued)

Recreation & Culture	(2,677,799)	(2,941,935)	264,136	9% Timing	58,344	MES	DC	Timing of grounds and buildings maintenance at the Civic Centre
					62,909	FM	FM	Coast Care employee not employed directly by Perth Region NRM, corresponding change to revenue
				Contract change	(47,076)	FM	FM	Extra expenditure on the lifeguard service at Cottesloe beach
				Mainly Extra Expenditure	57,395	FM	FM	Less depreciation than budgeted
				Non Cash	73,112	FM	FM	Timing of parks maintenance
				Timing				Timing of expenditure on festivals, meetings and events
				Timing	19,478	FM	FM	
Transport	(2,480,167)	(2,388,367)	(91,800)	(4%) Extra expenditure	(32,881)	MCCS	SR	Employee costs in Ranger Services more than anticipated
				Extra expenditure	(26,062)	MCCS	SR	Parking contractor costs more than anticipated
				Timing	(40,361)	MES	WS	Timing of street tree maintenance
				Non Cash	20,906	FM	FM	Depreciation expenses on car parks
Economic Services	(272,116)	(342,562)	70,446	21% Deferred works	48,734	BS	BS	Contractor payments deferred until 2014-2015
				Savings	17,100	MDS	MDS	Employee costs less than anticipated
Other Property & Services	(58,076)	(16,696)	(41,380)	(248%) Timing	(41,380)	FM	FM	Allocation of public works overheads and plant costs

TOWN OF COTTESLOE

STATEMENT OF FINANCIAL ACTIVITY - VARIANCE ANALYSIS
FOR THE PERIOD ENDED 1 JULY 2013 TO 30 APRIL 2014

Note 2. VARIANCES (Report on material variances from the Statement of Financial Activity)

NON CASH TRANSACTIONS

<u>Program/Nature & Type</u>	<u>YTD Actual</u> \$	<u>YTD Budget</u> \$	<u>Variance</u> \$	<u>Variance</u> %	<u>Impact of Variation</u>	<u>Main Factors</u> \$	<u>Manager</u>	<u>Officer</u>	<u>Main Factors Influencing Variance</u>
(Profit)/Loss on Asset Disposal	43,161	-	43,161		Non cash item	43,161	FM	FM	Non cash movement on sale of assets
Employee Provisions	55,437	-	55,437		Non cash item	55,437	FM	FM	Non cash movements in employee provisions
Depreciation	1,691,787	1,734,108	(42,321)	(2%)	Non cash item	(42,321)	FM	FM	Less than anticipated depreciation

TOWN OF COTTESLOE

STATEMENT OF FINANCIAL ACTIVITY - VARIANCE ANALYSIS
FOR THE PERIOD ENDED 1 JULY 2013 TO 30 APRIL 2014

Note 2. VARIANCES (Report on material variances from the Statement of Financial Activity)

CAPITAL EXPENDITURE

- Plant & Equipment	(306,092)	(357,500)	51,408	MES	FM	51,408	Timing of plant and vehicle purchases
- Infrastructure Roads	(370,844)	(641,800)	270,956	MES	FM	270,956	Timing of road construction
- Infrastructure Footpaths	(563,413)	(514,155)	(49,258)	(10%) Extra Expenditure	MES	(35,165)	Extra expenditure on the disability ramp at the foreshore Extra expenditure on the dual use path in Forrest Street
- Infrastructure Parks & Reserves	(28,335)	(42,504)	14,169	33% Timing	MES	14,169	Timing of parks construction
- Infrastructure Miscellaneous	(170,184)	(152,000)	(18,184)	(12%) Extra expenditure	MES	(18,184)	CCTV installed at Station Street
- Infrastructure Street Furniture	(139,843)	0	(139,843)	Extra expenditure	MDS	(139,843)	Budget amendment - new three bin system
- Infrastructure Right Of Ways	(62,059)	(81,200)	19,141	24% Timing	MES	19,141	Timing of ROW construction
- Infrastructure Irrigation	(1,480)	(16,668)	15,188	91% Timing	MES	15,188	Timing of irrigation construction

RESERVE TRANSFERS

- Transfers from Reserves	130,639	379,323	(248,684)	66% Reduction in Transfers	FM	(248,684)	Reduction in transfers as per the Budget Review
---------------------------	---------	---------	-----------	----------------------------	----	-----------	---

TOWN OF COTTESLOE

LIST OF ACCOUNTS PAID DURING APRIL 2014 AND PRESENTED TO A MEETING OF THE WORKS & CORPORATE SERVICES COMMITTEE HELD ON 20 MAY 2014

CERTIFICATE OF CHIEF EXECUTIVE OFFICER



<u>Date</u>	<u>Payment Reference</u>	<u>Payee</u>	<u>Description</u>	<u>Amount</u>
3/04/2014	00024685	Colonial First State Rollover	Superannuation	\$ 161.43
3/04/2014	00024686	HESTA Super Fund	Superannuation	\$ 27.07
3/04/2014	00024687	ING DIRECT Superannuation Fund	Superannuation	\$ 70.21
3/04/2014	00024688	Kinetic Superannuation	Superannuation	\$ 235.67
3/04/2014	00024689	Sunsuper Superannuation Fund	Superannuation	\$ 319.56
3/04/2014	00024690	WA Super	Superannuation	\$ 14,949.82
4/04/2014	00024691	Building Commission	BSL Jan 2014	\$ 14,568.67
4/04/2014	00024692	Department of Transport	3 Months registration 1DLL471	\$ 85.25
4/04/2014	00024693	Synergy	Electricity supply to various sites	\$ 6,480.05
4/04/2014	00024694	Telstra Corporation Limited	Service and equipment 13 Mar - 13 Apr 14	\$ 1,588.79
4/04/2014	00024695	Water Corporation	Water usage at various sites 1 Mar 14 - 30 Apr 14	\$ 493.93
4/04/2014	00024696	Tallwood Constructions Pty Ltd	Refund Building Fees	\$ 1,920.00
4/04/2014	00024697	F J Henderson	Bond refund	\$ 1,000.00
4/04/2014	00024698	P McAuliffe	Bond and key refund	\$ 140.00
4/04/2014	00024699	Estate of C N Peacock	Bond refund	\$ 1,000.00
8/04/2014	00024700	Town of Cottesloe	Contribution	\$ 80.00
9/04/2014	00024701	Colonial First State Rollover	Superannuation	\$ 161.43
9/04/2014	00024702	HESTA Super Fund	Superannuation	\$ 27.07

<u>Date</u>	<u>Payment Reference</u>	<u>Payee</u>	<u>Description</u>	<u>Amount</u>
9/04/2014	00024703	ING DIRECT Superannuation Fund	Superannuation	\$ 69.14
9/04/2014	00024704	Kinetic Superannuation	Superannuation	\$ 235.67
9/04/2014	00024705	Sunsuper Superannuation Fund	Superannuation	\$ 319.57
9/04/2014	00024706	WA Super	Superannuation	\$ 14,464.07
11/04/2014	00024707	Alinta	Gas supply	\$ 44.80
11/04/2014	00024708	BCITF	BCITF January 2014	\$ 36,415.93
11/04/2014	00024709	Landgate	Data subscription	\$ 3,822.00
11/04/2014	00024710	Office of State Revenue	Refund senior rebate	\$ 269.94
11/04/2014	00024711	Synergy	Streetlight tariff charge 25 Feb - 24 Mar 14	\$ 11,567.35
11/04/2014	00024712	Telstra Corporation Limited	Mobile communications charge 28 Mar - 27 Apr 14	\$ 1,203.77
11/04/2014	00024713	Y K Vandongen	Overpayment Refund	\$ 347.44
11/04/2014	00024714	K J & C D Campbell	Overpayment Refund	\$ 347.44
11/04/2014	00024715	Malcolm Yates	Cancellation of booking	\$ 380.00
11/04/2014	00024716	Richard O'Loughlin	Refund	\$ 150.00
11/04/2014	00024717	P J Callaghan	Bond refund	\$ 1,000.00
17/04/2014	00024718	Advanced Electrical Equipment	3 Electrical pits for dual path in Forrest St	\$ 418.44
17/04/2014	00024719	Jason Sign Makers	2 Cott Cat signs	\$ 64.90
17/04/2014	00024720	Landgate - VGO	Fortnightly valuations 1-14 Mar 14	\$ 371.15
17/04/2014	00024721	Building Corporation WA Pty Ltd	Refund of Fees	\$ 130.50
17/04/2014	00024722	R D Waller	Overpayment Refund	\$ 887.37
17/04/2014	00024723	J Nielsen	Key bond	\$ 40.00
17/04/2014	00024724	Kerrie Ware	Refund of replacement bin	\$ 40.00
30/04/2014	00024725	Majestic Building Company Pty Ltd	Bond refund	\$ 1,000.00
30/04/2014	00024726	R R Creagh & Co	Bond refund	\$ 640.00
30/04/2014	00024727	K Johns	Part bond refund	\$ 399.99
30/04/2014	00024728	Brooks Construction Pty Ltd	Bond refund	\$ 1,000.00
30/04/2014	00024729	A Mews	Refund Lesser Hall bond and Key bond	\$ 140.00
30/04/2014	00024730	Miss S N G Skrzypkowiak	Refund of cancelled 9 bookings - Lesser Hall	\$ 225.00
30/04/2014	00024731	P Margaria	Bond refund	\$ 100.00
30/04/2014	00024732	Sea Pines Holdings Pty Ltd	Overpayment Refund	\$ 2,122.40
30/04/2014	00024733	Fines Enforcement Registry	Unpaid infringement disk sent to FER	\$ 5,848.00
30/04/2014	00024734	Jason Sign Makers	4 Warning signs	\$ 409.20
30/04/2014	00024735	Landgate	Land listing for fair value	\$ 181.50
30/04/2014	00024736	Napoleon Street Newsagency	Stationery supplies	\$ 35.00
1/04/2014	743.98000	Australian Taxation Office	Business Activity Statement March 2014	\$ 48,789.02

<u>Date</u>	<u>Payment Reference</u>	<u>Payee</u>	<u>Description</u>	<u>Amount</u>
3/04/2014	744.3	Department of Human Services	Payroll Deduction	\$ 329.40
3/04/2014	744.5	LGRCEU	Payroll Deduction	\$ 155.20
3/04/2014	745.1020	By Word of Mouth Pty Ltd	Catering - meeting 18 Mar 14	\$ 396.00
3/04/2014	745.1093	DORMA Australia Pty Ltd	Call-out to repair faulty front doors	\$ 387.10
3/04/2014	745.111	Murphy's Electrical Company	Inspect/repair lights in Napoleon Street	\$ 1,287.00
3/04/2014	745.1237	Dale's Dairy Dash	Milk supplies w/e 22 Feb, 1, 8, 15 & 22 Mar 14	\$ 275.49
3/04/2014	745.1361	Department of Transport	Vehicle ownership search - Feb 14	\$ 2,229.20
3/04/2014	745.1472	SOS - Switched Onto Safety	On-site chemwatch training - 13 Mar 14	\$ 528.00
3/04/2014	745.1583	Information Proficiency	TRIM Upgrade 9 Feb - 8 Mar 14 and Records Management	\$ 4,785.00
3/04/2014	745.1591	Labourforce Impex Personnel Pty Ltd	Temporary depot staff w/e 23 Mar 14	\$ 948.94
3/04/2014	745.16	Presswise Publications	Civic Centre News - Post Newspapers 15 Mar 14	\$ 1,100.00
3/04/2014	745.1756	Sunset Graphics	Graphic Design - Strategic Community Plan	\$ 300.00
3/04/2014	745.1760	Bayview Dingo Hire Pty Ltd	Dingo hire with operator - beach access path	\$ 792.00
3/04/2014	745.1763	CDI Electrics	Install light poles Civic Centre car park	\$ 6,424.00
3/04/2014	745.201	Environmental Printing Company	Stationery order	\$ 1,782.00
3/04/2014	745.22	Landgate - VGO	Fortnightly valuations 15-28 Feb 14	\$ 15.78
3/04/2014	745.26	Greenway Enterprises	Hardware supplies	\$ 181.73
3/04/2014	745.29	Fuji Xerox Australia Pty Ltd	Photocopying charges	\$ 628.23
3/04/2014	745.35	Cottesloe IGA	Supplies for meetings	\$ 105.81
3/04/2014	745.37	Staples Australia Pty Ltd	Stationery order	\$ 12.41
3/04/2014	745.44	UHY Haines Norton Chartered Accountants	2013/2014 LG rate comparison report	\$ 198.00
3/04/2014	745.597	Equip-Safe	Skid Steer Loader Training and Assessment	\$ 1,200.00
3/04/2014	745.602	WA Treasury Corporation	Loan 106 Repayment	\$ 104,305.51
3/04/2014	745.62	Bunnings Group Ltd	Hardware supplies	\$ 167.27
3/04/2014	745.645	Cobblestone Concrete	Installation of footpath - Brighton St	\$ 17,916.52
3/04/2014	745.650	Coates Hire Operations Pty Ltd	Hire of equipment for New Years Eve	\$ 701.25
3/04/2014	745.651	E & MJ Rosher Pty Ltd	Service front deck - ride on mower F3680	\$ 704.90
3/04/2014	745.75	Safety Zone Australia Pty Ltd	Safety boots and safety wear	\$ 418.28
3/04/2014	745.79	Perth Irrigation Centre	Irrigation hardware supplies	\$ 465.55
3/04/2014	745.84	West Australian Local Government Association	Marketforce advertising - Feb 14	\$ 1,342.32
3/04/2014	745.85	Western Metropolitan Regional Council	Transfer Station Waste Disposal	\$ 12,520.72
3/04/2014	745.87	Repco Auto Parts	Tyre inflator	\$ 75.90
3/04/2014	745.89	Major Motors Pty Ltd	Service 3T truck 1DFQ064	\$ 181.50
3/04/2014	745.91	Claremont Asphalt	Asphalt work various sites	\$ 4,840.00
3/04/2014	745.94	Insight CCS Pty Ltd	After hours answering service - Feb 14	\$ 436.33

<u>Date</u>	<u>Payment Reference</u>	<u>Payee</u>	<u>Description</u>	<u>Amount</u>
4/04/2014	746.1020	By Word of Mouth Pty Ltd	Catering for council meetings	\$ 1,881.00
4/04/2014	746.128	Total Packaging (WA) Pty Ltd	20x boxes of dog waste bags	\$ 1,716.00
4/04/2014	746.1338	Chadson Engineering Pty Ltd	2x Boxes DPD no1 chlorine etc	\$ 126.50
4/04/2014	746.1377	Harvey Norman AV/IT Superstore O'Connor	Sony action cam plus accessories	\$ 434.00
4/04/2014	746.1626	Young's Plumbing Service Pty Ltd	Inspect/repair water fountain - Marine/Grant ST	\$ 748.00
4/04/2014	746.1695	Logan Workforce Solutions Pty Ltd	Certificate III in Park and Gardens enrolment - 4 depot staff	\$ 3,874.44
4/04/2014	746.1712	Direct Commercial Supplies	Consumables for public toilets	\$ 1,122.00
4/04/2014	746.1743	S & B SkidSteer Services	Bobcat and tipper hire	\$ 841.50
4/04/2014	746.1758	Crest Labour Pty Ltd	Temporary depot staff w/e 16 Mar 14	\$ 1,866.98
4/04/2014	746.1759	D A Christie Pty Ltd T/as Christie	Replacement Hotplate and Thermostat for BBQ Civic Centre	\$ 1,404.70
4/04/2014	746.210	Hays Specialist Recruitment (Aust.)	Temporary administration officers	\$ 9,372.10
4/04/2014	746.37	Staples Australia Pty Ltd	Stationery order	\$ 121.50
4/04/2014	746.510	Complete Pest Management Services	Treated three Cape Lilac trees - Jarrad St	\$ 480.00
4/04/2014	746.62	Bunnings Group Ltd	Hardware supplies	\$ 70.20
4/04/2014	746.685	E I Drewett	Reimbursement of costs incurred - PIA Conference	\$ 239.73
4/04/2014	746.880	Telstra Corp Ltd	Repairs to damaged cable on Broome St	\$ 502.76
4/04/2014	746.955	Minuteman Press	Scanning committee& council minutes Aug & Dec 13	\$ 252.45
4/04/2014	746.998	Road Signs Australia Pty Ltd	Street Sign - "Seaview Terrace"	\$ 55.00
4/04/2014	747.544	B M Pember	Consulting Services with Authority and TRIM	\$ 2,131.25
4/04/2014	747.602	WA Treasury Corporation	Loan 105 repayment	\$ 19,776.50
4/04/2014	748.1098	National Australia Bank Business Visa	Nespresso 100 Coffee pods for meetings - \$79.00 Monthly credit card fee - \$9.00	\$ 88.00
11/04/2014	749.1020	By Word of Mouth Pty Ltd	Catering supplies	\$ 517.00
11/04/2014	749.1042	Recall Information Management Pty Ltd	Secure bin shredding service - 22 Feb - 21 Mar 14	\$ 77.48
11/04/2014	749.1047	C Askew	Quarterly claim telephone reimbursement Jan - Mar 14	\$ 250.00
11/04/2014	749.105	Active Transport & Tilt Tray Service	Towing of two vehicles to impound yard	\$ 198.00
11/04/2014	749.1081	Envirocare Systems Pty Ltd	50 Greenheart Waterless Urinal Pucks	\$ 326.70
11/04/2014	749.114	Creation Landscape Supplies	10x20kg bags of rapid set concrete	\$ 75.00
11/04/2014	749.1200	Adams Coachlines	2013/2014 Cott Cat service - Mar 14	\$ 14,531.30
11/04/2014	749.1209	Ben Sgherza	Disability Access and Inclusion training 24 & 26 Mar 14	\$ 4,000.00
11/04/2014	749.122	Jackson McDonald Lawyers	Legal advice	\$ 391.31
11/04/2014	749.1331	Willetton Electrics	Electrical services - Australia Day event	\$ 363.00
11/04/2014	749.139	Australia Post	Daily mail delivered/collected - Mar 14	\$ 1,418.72
11/04/2014	749.1450	Bin Bombs	20kg bucket of bin bombs deodorising powder	\$ 142.95
11/04/2014	749.146	Bring Couriers	Courier service	\$ 38.52

<u>Date</u>	<u>Payment Reference</u>	<u>Payee</u>	<u>Description</u>	<u>Amount</u>
11/04/2014	749.1576	Edinger Real Estate	Monthly lease fee 8 Stack St depot - May 14	\$ 15,006.84
11/04/2014	749.1582	Snap Claremont	Plan printing	\$ 38.00
11/04/2014	749.1583	Information Proficiency	HP TRIM upgrade	\$ 4,956.88
11/04/2014	749.1591	Labourforce Impex Personnel Pty Ltd	Temporary depot staff w/e 30 Mar 14	\$ 948.94
11/04/2014	749.1618	Power Industrial Supplies	20 Broad Brim Hats and 36 Spray paint cans	\$ 596.20
11/04/2014	749.1645	Swissclinical Australia Pty Ltd	Dry-cleaning - Mar 14	\$ 127.00
11/04/2014	749.1663	General Lighting Services WA	Civic Centre Emergency lighting testing, inspection and repairs	\$ 2,158.00
11/04/2014	749.1676	Searle Fasteners Pty Ltd	Hardware supplies	\$ 155.12
11/04/2014	749.1693	Surekleen Products Pty Ltd	Exit tag 20L	\$ 198.00
11/04/2014	749.1758	Crest Labour Pty Ltd	Temporary depot staff w/e 30 Mar 14	\$ 1,365.10
11/04/2014	749.1760	Bayview Dingo Hire Pty Ltd	Dingo hire with operator - beach access	\$ 792.00
11/04/2014	749.1762	Cranetruck Services WA Pty Ltd	Relocation of Jean-Pierre Rives sculpture	\$ 560.00
11/04/2014	749.1764	CADDs Compliance	Survey of Marine Parade - Forrest to Napier St	\$ 3,003.00
11/04/2014	749.1767	Kevrek (Australia) Pty Ltd	Parts for plant vehicles	\$ 88.77
11/04/2014	749.19	McLeods Barristers & Solicitors	Legal advice	\$ 5,640.68
11/04/2014	749.194	Magnapower	Hardware supplies	\$ 3,762.88
11/04/2014	749.20	Hillmack Sales (Australia) Pty Ltd	Concrete for sculpture	\$ 360.00
11/04/2014	749.222	W A Richards	Annual membership FMAAT	\$ 260.14
11/04/2014	749.35	Cottesloe IGA	Supplies for disability access training	\$ 26.52
11/04/2014	749.36	Grants of Cottesloe	Assortment of wine	\$ 451.50
11/04/2014	749.37	Staples Australia Pty Ltd	Stationery order	\$ 950.66
11/04/2014	749.38	Veolia Environmental Services	Monthly site fee - depot hook bin	\$ 82.50
11/04/2014	749.46	Professional Tree Surgeons	Prune trees on Broome and Jarrad St, remove Cape Lilac tree on Jarrad St	\$ 1,969.00
11/04/2014	749.504	L & L Design Services	Curtin Ave & Eric St Intersection upgrade construction design	\$ 3,795.00
11/04/2014	749.510	Complete Pest Management Services	Monthly rat baiting at Cottesloe groyne	\$ 298.00
11/04/2014	749.555	K R Sputore	Reimbursement of meeting expenses - Coast care	\$ 42.54
11/04/2014	749.587	Dick Smith Electronics Pty Ltd	Hardware supplies	\$ 30.00
11/04/2014	749.609	WA Rangers Association	5 ranger caps	\$ 66.95
11/04/2014	749.62	Bunnings Group Ltd	Hardware supplies	\$ 318.13
11/04/2014	749.75	Safety Zone Australia Pty Ltd	Safety wear	\$ 1,202.68
11/04/2014	749.77	Galvins Plumbing Supplies	Plumbing supplies	\$ 300.30
11/04/2014	749.82	Civica Pty Ltd	Build TRIM web service - TRIM Upgrade	\$ 1,936.00
11/04/2014	749.84	West Australian Local Government Association	Marketforce advertising - Feb 14	\$ 654.69
11/04/2014	749.85	Western Metropolitan Regional Council	Transfer station waste disposal	\$ 13,912.24
11/04/2014	749.87	Repco Auto Parts	Booster intelligent cable	\$ 61.60

<u>Date</u>	<u>Payment Reference</u>	<u>Payee</u>	<u>Description</u>	<u>Amount</u>
11/04/2014	749.88	Ocean IT Pty Ltd	ADSL 2+ for surveillance camera - Mar 14	\$ 71.38
11/04/2014	749.89	Major Motors Pty Ltd	Service 5T truck	\$ 302.50
11/04/2014	750.3	Department of Human Services	Payroll Deduction	\$ 329.40
11/04/2014	750.5	LGRCEU	Payroll Deduction	\$ 155.20
11/04/2014	751.51	Westnet Pty Ltd	Internet access 1 Apr - 1 Mar 14	\$ 51.43
17/04/2014	752.105	Active Transport & Tilt Tray Service	Tow abandoned vehicle to impound yard	\$ 99.00
17/04/2014	752.1066	Subaru Osborne Park	75,000km service 1DSR101	\$ 459.00
17/04/2014	752.1099	O'Connor Lawnmower & Chainsaw Centre	Various parts for plant equipment	\$ 442.00
17/04/2014	752.122	Jackson McDonald Lawyers	Legal advice - Telstra - SAT	\$ 239.32
17/04/2014	752.1245	Nu-Trac Rural Contracting	Beach cleaning - Mar 14	\$ 11,030.00
17/04/2014	752.131	Maitland Heritage Engineering	Design/report on retaining wall rebuild De Bernales Walk Civic Centre	\$ 3,740.00
17/04/2014	752.1377	Harvey Norman AV/IT Superstore O'Connor	DLINK modem router N300 4P USB and digital camera	\$ 251.00
17/04/2014	752.1428	Subaru Wangara	25,000km service 1EFP273	\$ 400.00
17/04/2014	752.1429	Westcoast Community Centre Inc	Contributions to Westcoast Community Centre	\$ 1,708.00
17/04/2014	752.1473	Eco Resources Pty Ltd	Waste disposal fees	\$ 1,980.00
17/04/2014	752.1493	Need A Bin	Monthly site fee - E-waste skip bin	\$ 66.00
17/04/2014	752.1582	Snap Claremont	Plan printing	\$ 162.00
17/04/2014	752.1591	Labourforce Impex Personnel Pty Ltd	Temporary depot staff w/e 6 Apr 14	\$ 1,265.24
17/04/2014	752.1683	Beacon Equipment	Pole Saw Repairs	\$ 44.80
17/04/2014	752.1694	B & B Waste Contractors Pty Ltd	Greenwaste verge college and leaflet distribution	\$ 31,020.00
17/04/2014	752.1758	Crest Labour Pty Ltd	Temporary depot staff w/e 6 Apr 14	\$ 1,003.75
17/04/2014	752.1767	Kevrek (Australia) Pty Ltd	Replacement control lever module	\$ 335.50
17/04/2014	752.187	WA Limestone Company	Semi load of topsoil and semi load of crushed limestone	\$ 1,058.29
17/04/2014	752.188	Bob Jane T-Mart	Two replacement tyres for Skid Steer loader, two front tyres for truck and puncture rej	\$ 1,336.00
17/04/2014	752.194	Magnapower	Wet weather overalls and out of service tags	\$ 159.28
17/04/2014	752.210	Hays Specialist Recruitment (Aust.)	Temporary administration officer w/e 6 Apr 14	\$ 1,028.02
17/04/2014	752.33	Cottesloe Medical Centre	Pre-employment medical	\$ 150.04
17/04/2014	752.35	Cottesloe IGA	Catering supplies	\$ 136.58
17/04/2014	752.37	Staples Australia Pty Ltd	Stationery order	\$ 707.28
17/04/2014	752.48	Cannon Hygiene Australia Pty Ltd	Fortnightly sanitary service main beach and north beach toilets	\$ 2,306.82
17/04/2014	752.510	Complete Pest Management Services	Annual termite inspection 2014 - Civic Centre	\$ 1,200.00
17/04/2014	752.544	B M Pember	Support with Authority & TRIM	\$ 2,062.50
17/04/2014	752.55	Shire of Peppermint Grove	Quarterly library contribution Apr - Jun 14	\$ 158,120.86
17/04/2014	752.602	WA Treasury Corporation	Loan 104 repayment	\$ 13,345.45
17/04/2014	752.62	Bunnings Group Ltd	Hardware supplies	\$ 443.48

<u>Date</u>	<u>Payment Reference</u>	<u>Payee</u>	<u>Description</u>	<u>Amount</u>
17/04/2014	752.645	Cobblestone Concrete	Installation of footpath Marmion St and repairs to dual use path	\$ 15,691.50
17/04/2014	752.75	Safety Zone Australia Pty Ltd	Safety boots	\$ 154.00
17/04/2014	752.759	Adshel Street Furniture Pty Ltd	Bus shelter advertising for Cott Cat - Mar 14	\$ 1,221.00
17/04/2014	752.85	Western Metropolitan Regional Council	Transfer station waste disposal	\$ 11,928.23
17/04/2014	752.87	Repco Auto Parts	2.5lt Coolant and 4 AAA battery pack	\$ 37.19
17/04/2014	752.88	Ocean IT Pty Ltd	Onsite managed IT support - Apr 14	\$ 10,513.56
17/04/2014	752.91	Claremont Asphalt	Soakwell installation and asphalt work in John St and Congdon St	\$ 2,530.00
17/04/2014	753.1721	Business Fuel Cards Pty Ltd	Fuel for custom fleet	\$ 7,771.66
30/04/2014	754.1020	By Word of Mouth Pty Ltd	Catering for meetings	\$ 594.00
30/04/2014	754.1099	O'Connor Lawnmower & Chainsaw Centre	Hardware supplies	\$ 62.60
30/04/2014	754.1121	Fast Finishing Services	Binding - Committee & Council - Agendas	\$ 148.50
30/04/2014	754.122	Jackson McDonald Lawyers	Legal advice - Development of depot site	\$ 738.97
30/04/2014	754.1226	Ellenby Tree Farm Pty Ltd	10 x 75L WA Weeping Peppermint & 1 Coral tree	\$ 2,343.00
30/04/2014	754.126	Holcim (Australia) Pty Ltd	Concrete cover with insert and soakwell cover with raised grate	\$ 853.60
30/04/2014	754.132	Landfill Gas & Power Pty Ltd	Black power supply 1 Mar - 1 Apr 14	\$ 3,829.12
30/04/2014	754.1334	Down Under Stump Grinding Pty Ltd	Grind stumps at various sites	\$ 671.00
30/04/2014	754.1361	Department of Transport	Monthly vehicle ownership search - Mar 1	\$ 1,743.00
30/04/2014	754.1473	Eco Resources Pty Ltd	Waste disposal fees	\$ 1,980.00
30/04/2014	754.1479	Environmental Wastewater C S Pty Ltd	Street sweeping - Mar 14	\$ 5,566.29
30/04/2014	754.1582	Snap Claremont	Plan printing	\$ 28.00
30/04/2014	754.1583	Information Proficiency	TRIM upgrade	\$ 3,513.13
30/04/2014	754.1591	Labourforce Impex Personnel Pty Ltd	Temporary depot staff w/e 13 and 20 Apr 14	\$ 2,846.80
30/04/2014	754.16	Presswise Publications	Civic Centre News - Post Newspaper 13 Apr 14	\$ 1,100.00
30/04/2014	754.1614	Challenger Institute of Technology	Certificate III Business Administration enrolment	\$ 1,195.20
30/04/2014	754.1626	Young's Plumbing Service Pty Ltd	Plumbing works at Napier St playground shower leaking valve	\$ 151.80
30/04/2014	754.17	Post Newspaper Pty Ltd	Cottesloe page publication - Post News	\$ 1,430.00
30/04/2014	754.1700	Rodrigues Bodycoat Architects	Proposed toilet facilities - Indiana teahouse	\$ 2,970.00
30/04/2014	754.1701	Genie Exhausts WA	Repairs to water pipe on club car	\$ 450.00
30/04/2014	754.1723	Perthwaste Green Recycling	Domestic and commercial waste disposal - Mar 14	\$ 65,418.27
30/04/2014	754.1758	Crest Labour Pty Ltd	Temporary depot staff w/e 13 Apr 14	\$ 341.28
30/04/2014	754.1766	Bardfield Engineering	Supply/install heavy duty AFL goal posts - Cott Oval	\$ 4,070.00
30/04/2014	754.1767	Kevrek (Australia) Pty Ltd	Repaired oil leak on truck	\$ 152.41
30/04/2014	754.1768	John Osborn	Remediation works - beach access paths	\$ 792.00
30/04/2014	754.1770	Civic Legal Pty Ltd	LG Structural Reform Workshop 6 May 14	\$ 66.00
30/04/2014	754.1771	D R Lappan	Reimbursements - Fuel, medical and police clearance	\$ 596.51

<u>Date</u>	<u>Payment Reference</u>	<u>Payee</u>	<u>Description</u>	<u>Amount</u>
30/04/2014	754.181	JR & A Hersey Pty Ltd	Jarrah stakes & pine logs and hardware supplies	\$ 2,127.40
30/04/2014	754.197	Holcim (Australia) Pty Ltd	Concrete for sculpture base - Grant/Marine Pde	\$ 724.90
30/04/2014	754.205	Cottesloe News Delivery	Daily newspapers delivered to Civic Centre	\$ 115.60
30/04/2014	754.210	Hays Specialist Recruitment (Aust.)	Temporary administration officer w/e 13 Apr 14	\$ 1,756.19
30/04/2014	754.24	Iron Mountain Australia Pty Ltd	Offsite storage of records - Mar 14	\$ 123.31
30/04/2014	754.29	Fuji Xerox Australia Pty Ltd	Meter reading - Mar 14	\$ 620.25
30/04/2014	754.35	Cottesloe IGA	Catering supplies	\$ 47.88
30/04/2014	754.37	Staples Australia Pty Ltd	Catering supplies	\$ 259.15
30/04/2014	754.38	Veolia Environmental Services	Replacement hook bin for depot	\$ 1,480.42
30/04/2014	754.46	Professional Tree Surgeons	Report on Gum tree on Napier St	\$ 330.00
30/04/2014	754.47	Collisters Electrical	Electrical work at Civic Centre	\$ 635.80
30/04/2014	754.49	Charles Service Company	Civic Centre cleaning Mar 14	\$ 5,396.01
30/04/2014	754.510	Complete Pest Management Services	Treat Cape Lilac tree - Stanhope St	\$ 248.00
30/04/2014	754.523	Local Government Managers Australia	LGMA cancellation fee	\$ 16.50
30/04/2014	754.525	GC Sales (WA)	30 bins, wheels and axles	\$ 2,948.00
30/04/2014	754.526	Zipform Pty Ltd	Final rates notice for instalments 2014	\$ 996.27
30/04/2014	754.540	Kerb Doctor	Installed mountable kerb - Eric St	\$ 1,056.00
30/04/2014	754.541	Signs Plus	Name badges for 5 staff members	\$ 65.00
30/04/2014	754.557	Worldwide Online Printing	50 Purchase Order Books	\$ 998.00
30/04/2014	754.62	Bunnings Group Ltd	Hardware supplies	\$ 250.02
30/04/2014	754.645	Cobblestone Concrete	Repairs to dual use footpath Marine/Curtin	\$ 1,650.00
30/04/2014	754.656	Surf Life Saving Western Australia	Lifeguard contract - Apr 14	\$ 29,181.43
30/04/2014	754.79	Perth Irrigation Centre	Irrigation hardware supplies	\$ 294.23
30/04/2014	754.791	Sculpture by the Sea	Signage, advertising and publicity contribution 2014 exhibition	\$ 11,000.00
30/04/2014	754.84	West Australian Local Government Association	Marketforce advertising - Mar 14	\$ 5,172.86
30/04/2014	754.85	Western Metropolitan Regional Council	Transfer station waste disposal	\$ 16,859.20
30/04/2014	754.86	Statewide Line Marking	Line marking at various sites in Cottesloe	\$ 5,714.83
30/04/2014	754.894	HISCO Hospitality & Healthcare	Crockery and cutlery for Mayor's Parlour	\$ 210.82
30/04/2014	754.94	Insight CCS Pty Ltd	After hours answering service - Mar 14	\$ 643.57
30/04/2014	754.998	Road Signs Australia Pty Ltd	9x300x4501 beach access ramp signs	\$ 222.75
1/04/2014		Dishonoured Item	Parking fine	\$ 100.00
1/04/2014		National Australia Bank	Bank fees	\$ 223.32
1/04/2014		National Australia Bank	Bank fees	\$ 311.42
1/04/2014		Commonwealth Bank of Australia	Bank fees	\$ 422.62
1/04/2014		National Australia Bank	Bank fees	\$ 985.27

<u>Date</u>	<u>Payment Reference</u>	<u>Payee</u>	<u>Description</u>	<u>Amount</u>
4/04/2014		National Australia Bank	Transfer to Investment account	\$ 300,000.00
9/04/2014		Town of Cottesloe Staff	Fortnightly payroll	\$ 80,565.38
15/04/2014		National Australia Bank	Bank fees	\$ 72.72
23/04/2014		Town of Cottesloe Staff	Fortnightly payroll	\$ 84,551.13
23/04/2014		National Australia Bank	Transfer to Investment account	\$ 240,000.00
29/04/2014		Dishonoured Item	Town planning fees	\$ 2,196.00
30/04/2014		National Australia Bank	Bank fees	\$ 16.32
30/04/2014		National Australia Bank	Bank fees	\$ 68.84
30/04/2014		National Australia Bank	Bank fees	\$ 214.10
30/04/2014		National Australia Bank	Bank fees	\$ 225.42
30/04/2014		National Australia Bank	Bank fees	\$ 794.40
			Grand Total:	\$ 1,673,076.40

Pursuant to Regulation of 13(4) of the local Government (Financial Management) Regulations the total of all other outstanding accounts for payment as at the date of this payment listing being prepared is \$203,197.67

I hereby certify that the above schedule of accounts totalling \$1,673,076.40 as submitted to the Works & Corporate Services Committee meeting held on 20 May 2014

_____ Signed (Chairperson of the Works & Corporate Services Committee)

TOWN OF COTTESLOE
RESERVES - CASH BACKED INVESTMENTS
FOR THE PERIOD ENDING 30 APRIL 2014

	2013-2014 ACTUAL \$	2013-2014 BUDGET \$
1 Area Improvement		
Purpose: To fund the cost of improving facilities within the Municipality.		
Opening Balance	1,231	891
Transfer to Reserves	28	27
Transfer from Reserves	(884)	(918)
	<u>374</u>	<u>-</u>
2 Waste Management Reserve		
Purpose: To fund the improvement, replacement and expansion of waste management plant, equipment, facilities and services.		
Opening Balance	73,365	72,867
Transfer to Reserves	1,997	2,186
Transfer from Reserves	0	-
Closing Balance	<u>75,362</u>	<u>75,053</u>
3 Parking Reserve		
Purpose: To set aside funds from developers for the development of parking facilities		
Opening Balance	9,677	14,300
Transfer to Reserves	263	429
Transfer from Reserves	0	-
Closing Balance	<u>9,940</u>	<u>14,729</u>
4 Leave Reserve		
Purpose: To set asides funds to assist with the funding of unexpected employee entitlements		
Opening Balance	169,232	168,125
Transfer to Reserves	4,553	5,044
Transfer from Reserves	0	-
Closing Balance	<u>173,784</u>	<u>173,169</u>
5 Civic Centre Reserve		
Purpose: To fund the cost of upgrading the civic centre.		
Opening Balance	855	1,410
Transfer to Reserves	356	42
Transfer from Reserves	(1,452)	(1,452)
Closing Balance	<u>(241)</u>	<u>-</u>
6 Property Reserve		
Purpose: To contribute towards future property construction/renewal.		
Opening Balance	366,177	364,364
Transfer to Reserves	9,654	11,077
Transfer from Reserves	0	-
Closing Balance	<u>375,831</u>	<u>375,441</u>

TOWN OF COTTESLOE
RESERVES - CASH BACKED INVESTMENTS
FOR THE PERIOD ENDING 30 APRIL 2014

	2013-2014 ACTUAL \$	2013-2014 BUDGET \$
7 Infrastructure Reserve		
Purpose: To contribute towards future infrastructure construction/renewal.		
Opening Balance	379,668	377,781
Transfer to Reserves	10,065	11,333
Transfer from Reserves	(40,000)	(162,000)
Closing Balance	<u>349,733</u>	<u>227,114</u>
8 Unspent Grants/Funds Reserve		
Purpose: To account for unspent grants/funds at year end		
Opening Balance	1,193	920
Transfer to Reserves	16	33
Transfer from Reserves	(953)	(953)
Closing Balance	<u>256</u>	<u>-</u>
9 Legal Reserve		
Purpose: To provide funds to provide for legal expenses		
Opening Balance	63,213	62,824
Transfer to Reserves	1,721	1,885
Transfer from Reserves	0	-
Closing Balance	<u>64,934</u>	<u>64,709</u>
10 Parking Facilities Reserve		
Purpose: To provide funds to provide for parking facilities		
Opening Balance	232,778	231,500
Transfer to Reserves	3,619	6,945
Transfer from Reserves	(87,350)	(204,000)
Closing Balance	<u>149,047</u>	<u>34,445</u>
11 Sustainability Reserve		
Purpose: To fund new or enhance existing Sustainability initiatives within the Town of Cottesloe		
Opening Balance	0	-
Transfer to Reserves	20,211	19,782
Transfer from Reserves	0	(10,000)
	<u>20,211</u>	<u>9,782</u>
Sub Total	<u>1,219,232</u>	<u>974,442</u>
12 Combined Library Reserve		
Purpose: To fund improvements at the Library		
Opening Balance	49,447	-
Transfer to Reserves	-	-
Transfer from Reserves	-	-
	<u>49,447</u>	<u>-</u>
TOTAL RESERVES	<u>1,268,679</u>	<u>974,442</u>

TOWN OF COTTESLOE

INVESTMENTS

SCHEDULE OF INVESTMENTS HELD AS AT 30 APRIL 2014

BANK	RATE %	TERM	MATURITY DATE	MUNICIPAL INVESTMENTS	RESERVE FUND	COMMENTS
				\$	\$	
NATIONAL AUSTRALIA BANK	3.60%	91 DAYS	27-May-14	5,385.93		COTTESLOE PRIMARY SCHOOL
NATIONAL AUSTRALIA BANK	3.60%	91 DAYS	27-May-14	5,329.90		NORTH COTT PRIMARY SCHOOL
WESTPAC	3.52%	101 DAYS	30-Jun-14	459,600.39		TERM INVESTMENT
WESTPAC	3.09%	36 DAYS	2-May-14	500,372.06		TERM INVESTMENT
BANKWEST	3.40%	60 DAYS	6-May-14	762,915.14		TERM INVESTMENT
COMMONWEALTH BANK OF AUSTRALIA	3.47%	30 DAYS	9-May-14	304,286.78		TERM INVESTMENT
NATIONAL AUSTRALIA BANK	3.60%	85 DAYS	29-May-14	509,197.54		TERM INVESTMENT
WESTPAC	3.40%	100 DAYS	30-Jun-14		76,650.00	RESERVE FUND INVESTMENTS
BANKWEST	3.40%	60 DAYS	5-May-14		282,957.98	RESERVE FUND INVESTMENTS
COMMONWEALTH BANK OF AUSTRALIA	3.36%	88 DAYS	30-Jun-14		496,703.34	RESERVE FUND INVESTMENTS
NATIONAL AUSTRALIA BANK	3.60%	92 DAYS	12-May-14		362,884.73	RESERVE FUND INVESTMENTS
					<u>\$2,547,087.74</u>	<u>\$1,219,196.05</u>

BANK	\$	%
NATIONAL	\$882,798.10	23.44
WESTPAC	\$1,036,622.45	27.52
BANKWEST	\$1,045,873.12	27.77
COMMONWEALTH	\$800,990.12	21.27
TOTAL	\$3,766,283.79	100.00

TOWN OF COTTESLOE

LOANS

SCHEDULE OF LOANS HELD AS AT 30 APRIL 2014

BANK	REF NO.	RATE %	PERIOD	MATURITY DATE	BALANCE OWING	LAST INSTALMENT DATE	NEXT INSTALMENT DATE	CURRENT LIABILITY	NON-CURRENT LIABILITY	COMMENTS
WA TREASURY	104	5.85%	10 YEARS	20-Oct-14	\$12,916.94	21-Apr-14	21-Oct-14	\$0.00	\$12,916.94	COTTESLOE TENNIS CLUB
WA TREASURY	105	6.22%	15 YEARS	6-Oct-23	\$278,939.89	7-Apr-14	6-Oct-14	\$0.00	\$278,939.89	SEA VIEW GOLF CLUB
WA TREASURY	106	5.25%	10 YEARS	3-Apr-19	\$903,069.45	3-Apr-14	3-Oct-14	\$0.00	\$903,069.45	CAPITAL PROJECT - CIVIC CENTRE
WA TREASURY	107	6.51%	20 YEARS	16-Sep-29	\$4,318,203.96	17-Mar-14	16-Sep-14	\$0.00	\$4,318,203.96	CAPITAL PROJECT - JOINT LIBRARY
					\$5,513,130.24			\$0.00	\$5,513,130.24	
LOANS TO OTHER ENTITIES										
\$291,856.83										
\$5,221,273.41										
\$5,513,130.24										

LOANS TO OTHER ENTITIES
LOANS FOR TOC

TOWN OF COTTESLOE

SUNDRY DEBTORS REPORT AS AT 30 APRIL 2014

<u>Debtor Number</u>	<u>Nature Of Debt</u>	<u>3+ Months</u>	<u>2+ Months</u>	<u>1+ Month</u>	<u>Current</u>	<u>Balance</u>	<u>Status</u>
13	Waste collection fees	\$2,370.45	\$0.00	\$0.00	\$0.00	\$2,370.45	Debt recovery commenced
403	Venue hire	\$1,772.10	\$1,320.00	\$0.00	\$0.00	\$3,092.10	Statements sent
498	Footpath reinstatement	\$1,311.20	\$0.00	\$0.00	\$0.00	\$1,311.20	Statements sent
49	Waste collection fees	\$1,136.20	\$0.00	\$0.00	\$568.10	\$1,704.30	Statements sent
26	Waste collection fees	\$975.00	\$0.00	\$0.00	\$487.50	\$1,462.50	Statements sent
293	Venue hire	\$950.00	\$0.00	\$0.00	\$0.00	\$950.00	Statements sent
128	Waste collection fees	\$784.94	\$0.00	\$0.00	\$784.94	\$1,569.88	Statements sent
3	Waste collection fees	\$512.76	\$0.00	\$0.00	\$0.00	\$512.76	Statements sent
106	Waste collection fees	\$511.25	\$0.00	\$0.00	\$81.25	\$592.50	Statements sent
491	Waste collection fees	\$374.40	\$0.00	\$0.00	\$405.60	\$780.00	Statements sent
29	Waste collection fees	\$243.75	\$0.00	\$0.00	\$243.75	\$487.50	Statements sent
4	Waste collection fees	\$196.24	\$0.00	\$0.00	\$196.24	\$392.48	Statements sent
454	Sale of bins	\$159.78	\$0.00	\$0.00	\$0.00	\$159.78	Statements sent
266	Waste collection fees	\$114.99	\$0.00	\$0.00	\$114.99	\$229.98	Statements sent
366	Health fees	\$6.40	\$0.00	\$0.00	\$0.00	\$6.40	Statements sent
155	Contribution	\$0.20	\$0.00	\$0.00	\$0.00	\$0.20	Statements sent
176	Recharge of services	\$0.00	\$0.00	\$22,570.28	\$264.00	\$22,834.28	Current
125	Reimbursement	\$0.00	\$0.00	\$4,309.15	\$0.00	\$4,309.15	Current
503	Contribution	\$0.00	\$0.00	\$1,500.00	\$0.00	\$1,500.00	Current
501	Health fees	\$0.00	\$0.00	\$670.00	\$0.00	\$670.00	Current
45	Reimbursement	\$0.00	\$0.00	\$0.00	\$13,872.86	\$13,872.86	Current
311	Reimbursement	\$0.00	\$0.00	\$0.00	\$3,943.50	\$3,943.50	Current
73	Waste collection fees	\$0.00	\$0.00	\$0.00	\$2,908.36	\$2,908.36	Current
86	Waste collection fees	\$0.00	\$0.00	\$0.00	\$2,770.95	\$2,770.95	Current
15	Waste collection fees	\$0.00	\$0.00	\$0.00	\$1,825.98	\$1,825.98	Current
12	Waste collection fees	\$0.00	\$0.00	\$0.00	\$1,407.38	\$1,407.38	Current
440	Waste collection fees	\$0.00	\$0.00	\$0.00	\$1,149.85	\$1,149.85	Current
41	Waste collection fees	\$0.00	\$0.00	\$0.00	\$1,109.94	\$1,109.94	Current

TOWN OF COTTESLOE

SUNDRY DEBTORS REPORT AS AT 30 APRIL 2014

<u>Debtor Number</u>	<u>Nature Of Debt</u>	<u>3+ Months</u>	<u>2+ Months</u>	<u>1+ Month</u>	<u>Current</u>	<u>Balance</u>	<u>Status</u>
245	Waste collection fees	\$0.00	\$0.00	\$0.00	\$987.35	\$987.35	Current
33	Waste collection fees	\$0.00	\$0.00	\$0.00	\$933.66	\$933.66	Current
113	Waste collection fees	\$0.00	\$0.00	\$0.00	\$811.20	\$811.20	Current
95	Waste collection fees	\$0.00	\$0.00	\$0.00	\$717.47	\$717.47	Current
479	Waste collection fees	\$0.00	\$0.00	\$0.00	\$684.72	\$684.72	Current
133	Waste collection fees	\$0.00	\$0.00	\$0.00	\$486.85	\$486.85	Current
55	Waste collection fees	\$0.00	\$0.00	\$0.00	\$418.42	\$418.42	Current
107	Waste collection fees	\$0.00	\$0.00	\$0.00	\$406.25	\$406.25	Current
444	Waste collection fees	\$0.00	\$0.00	\$0.00	\$405.60	\$405.60	Current
43	Waste collection fees	\$0.00	\$0.00	\$0.00	\$364.91	\$364.91	Current
11	Waste collection fees	\$0.00	\$0.00	\$0.00	\$311.22	\$311.22	Current
448	Waste collection fees	\$0.00	\$0.00	\$0.00	\$297.44	\$297.44	Current
154	Waste collection fees	\$0.00	\$0.00	\$0.00	\$263.71	\$263.71	Current
81	Waste collection fees	\$0.00	\$0.00	\$0.00	\$243.75	\$243.75	Current
99	Waste collection fees	\$0.00	\$0.00	\$0.00	\$229.98	\$229.98	Current
21	Waste collection fees	\$0.00	\$0.00	\$0.00	\$229.97	\$229.97	Current
117	Waste collection fees	\$0.00	\$0.00	\$0.00	\$216.19	\$216.19	Current
63	Waste collection fees	\$0.00	\$0.00	\$0.00	\$162.50	\$162.50	Current
114	Waste collection fees	\$0.00	\$0.00	\$0.00	\$162.50	\$162.50	Current
495	Waste collection fees	\$0.00	\$0.00	\$0.00	\$162.50	\$162.50	Current
164	Waste collection fees	\$0.00	\$0.00	\$0.00	\$148.72	\$148.72	Current
299	Waste collection fees	\$0.00	\$0.00	\$0.00	\$148.72	\$148.72	Current
478	Waste collection fees	\$0.00	\$0.00	\$0.00	\$148.72	\$148.72	Current
431	Waste collection fees	\$0.00	\$0.00	\$0.00	\$125.37	\$125.37	Current
438	Waste collection fees	\$0.00	\$0.00	\$0.00	\$120.00	\$120.00	Current
35	Waste collection fees	\$0.00	\$0.00	\$0.00	\$114.99	\$114.99	Current
62	Waste collection fees	\$0.00	\$0.00	\$0.00	\$114.99	\$114.99	Current
98	Waste collection fees	\$0.00	\$0.00	\$0.00	\$114.99	\$114.99	Current

TOWN OF COTTESLOE

SUNDRY DEBTORS REPORT AS AT 30 APRIL 2014

<u>Debtor Number</u>	<u>Nature Of Debt</u>	<u>3+ Months</u>	<u>2+ Months</u>	<u>1+ Month</u>	<u>Current</u>	<u>Balance</u>	<u>Status</u>
116	Waste collection fees	\$0.00	\$0.00	\$0.00	\$114.99	\$114.99	Current
123	Waste collection fees	\$0.00	\$0.00	\$0.00	\$114.99	\$114.99	Current
481	Waste collection fees	\$0.00	\$0.00	\$0.00	\$114.99	\$114.99	Current
90	Waste collection fees	\$0.00	\$0.00	\$0.00	\$81.25	\$81.25	Current
94	Waste collection fees	\$0.00	\$0.00	\$0.00	\$81.25	\$81.25	Current
104	Waste collection fees	\$0.00	\$0.00	\$0.00	\$81.25	\$81.25	Current
105	Waste collection fees	\$0.00	\$0.00	\$0.00	\$81.25	\$81.25	Current
119	Waste collection fees	\$0.00	\$0.00	\$0.00	\$81.25	\$81.25	Current
163	Waste collection fees	\$0.00	\$0.00	\$0.00	\$81.25	\$81.25	Current
261	Waste collection fees	\$0.00	\$0.00	\$0.00	\$81.25	\$81.25	Current
347	Waste collection fees	\$0.00	\$0.00	\$0.00	\$81.25	\$81.25	Current
407	Waste collection fees	\$0.00	\$0.00	\$0.00	\$81.25	\$81.25	Current
410	Waste collection fees	\$0.00	\$0.00	\$0.00	\$81.25	\$81.25	Current
429	Waste collection fees	\$0.00	\$0.00	\$0.00	\$81.25	\$81.25	Current
445	Waste collection fees	\$0.00	\$0.00	\$0.00	\$81.25	\$81.25	Current
496	Waste collection fees	\$0.00	\$0.00	\$0.00	\$68.75	\$68.75	Current
98000	Business Activity Statement	\$0.00	\$0.00	\$0.00	\$13,677.74	\$13,677.74	Current

=====

	\$11,419.66	\$1,320.00	\$29,049.43	\$56,734.34	\$98,523.43
--	-------------	------------	-------------	-------------	-------------

=====

Rates and Charges Analysis

For Financial Year 2014 Period 10 ,as at 1/05/2014



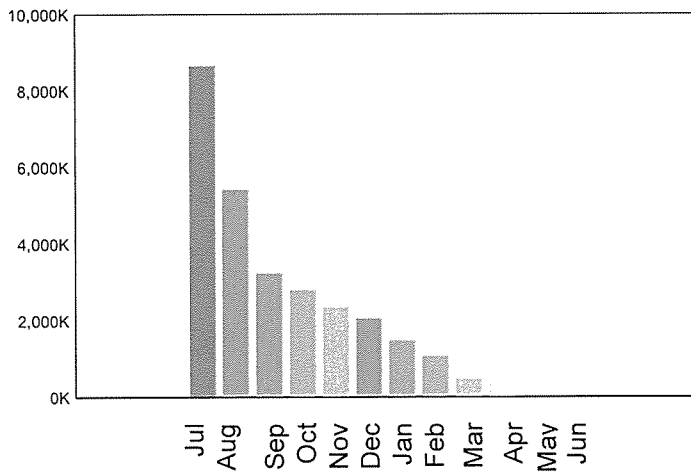
Amounts Levied and Outstanding

<u>Rate or Charge Type</u>	<u>Amount Levied This Year</u>	<u>Total Balance Outstanding</u>
GRV General Rate	8,503,659.87	357,182.38
Additional Bin	88,110.27	2,529.66
Credit Balances	0.00	-72,691.15
Swimming Pool	7,906.25	330.64
ESL Category 1	1,223,151.45	51,893.88
ESL Category 5	0.00	4.05
Instalment Fees	15,940.20	320.13
Instalment PreInterest	32,447.58	392.11
	9,871,215.62	339,961.70

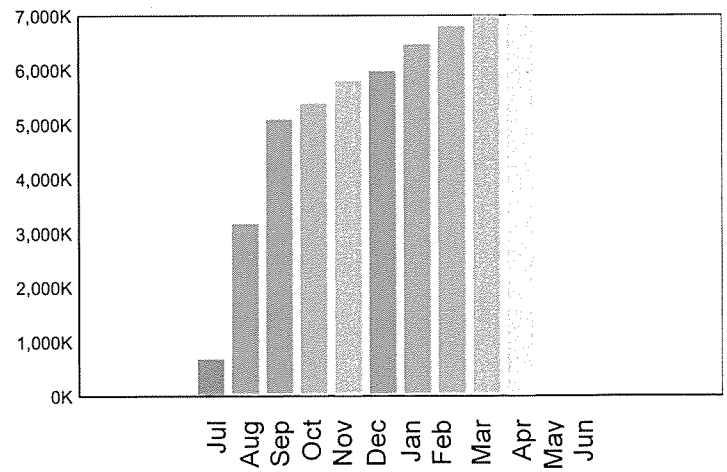
Analysis of Outstanding Balance

<u>Bfwd At 1 July</u>	<u>Levied YTD</u>	<u>Rebated</u>	<u>Receipted</u>	<u>Other Trans</u>	<u>Balance</u>
255,046.17	9,871,215.62	-571,976.82	-9,246,230.15	31,906.88	339,961.70
<u>Current</u>	<u>Arrears</u>	<u>Interest</u>	<u>Legal</u>	<u>Deferred</u>	<u>Balance</u>
116,974.60	25,076.32	18,278.05	2,518.70	177,114.03	339,961.70

Total Balance Outstanding By Month



YTD Collections By Month



Analysis of Assessments

Number of assessments	3,817
Number of assessments paid in full	3,301
Number of assessments with a balance outstanding	618
Number of assessments with arrears	39
Number of assessments on instalments	1,279
Number of assessments with pensioners or seniors	910
Number of assessments with deferred rates	28
Number of assessments with no payment yet	62

TOWN OF COTTESLOE

**CAPITAL WORKS PROGRAMME
FOR THE PERIOD ENDED 1 JULY 2013 TO 30 APRIL 2014**

PROJECT NO	PROJECT	2013-2014 YTD ACTUAL \$	2013-2014 YTD BUDGET \$	2013-2014 BUDGET \$	Variations Budget to YTD Actual \$	Variations Budget to YTD Actual %
3.4120.2	LAND DEVELOPMENT Old Cottesloe Depot Site	85,056	0	0	(85,056)	
5.1068.2	CARPARK CONSTRUCTION Forrest Street	76,980	70,000	70,000	(6,980)	(10%)
5.1136.2	Napier Street	112,558	134,000	134,000	21,442	16%
5.3065.2	Station Street	8,758	0	0	(8,758)	
10.9000.2	DRAINAGE CONSTRUCTION Cottesloe various	7,907	8,334	10,000	427	5%
15.1002.2	FOOTPATH CONSTRUCTION Ackland Way	2,608	2,500	2,500	(108)	(4%)
15.1016.2	Barsden Street	16,686	14,300	14,300	(2,386)	(17%)
15.1026.2	Brighton Street	16,425	18,100	18,100	1,675	9%
15.1030.2	Broome Street	20,389	17,300	17,300	(3,089)	(18%)
15.1086.2	Griever Street	0	16,900	16,900	16,900	100%
15.1104.2	Kathleen Street	26,386	25,900	25,900	(486)	(2%)
15.1114.2	Loma Street	14,753	14,800	14,800	47	0%
15.1128.2	Marmion Street	10,260	10,600	10,600	340	3%
15.9000.2	Bike Plan Works	156,987	130,000	130,000	(26,987)	(21%)
15.9000.5	Disability Access Ramp - Foreshore	298,919	263,755	263,755	(35,164)	(13%)

TOWN OF COTTESLOE

**CAPITAL WORKS PROGRAMME
FOR THE PERIOD ENDED 1 JULY 2013 TO 30 APRIL 2014**

PROJECT NO	PROJECT	2013-2014 YTD ACTUAL \$	2013-2014 YTD BUDGET \$	2013-2014 BUDGET \$	Variations Budget to YTD Actual \$	Variations Budget to YTD Actual %
20.9000.2	IRRIGATION CONSTRUCTION Cottesloe	1,480	16,668	20,000	15,188	91%
25.9000.2	LANEWAY CONSTRUCTION Cottesloe	62,059	81,200	81,200	19,141	24%
30.9000.2	PARKS AND RESERVES CONSTRUCTION Playgrounds various	21,979	30,000	30,000	8,021	27%
30.9000.5	Cottesloe Natural Area Upgrade	6,356	12,504	15,000	6,148	49%
35.4050.2	PROPERTY CONSTRUCTION Civic Centre - Voltage Optimisation	0	31,500	31,500		100%
35.4050.5	Civic Centre - Air Conditioning	45,286	80,000	80,000	34,714	43%
35.4135.2	Joint Library	3,888	0	0		
35.6030.2	Civic Centre Grounds Restoration	165,907	183,348	220,000	17,441	10%

TOWN OF COTTESLOE

**CAPITAL WORKS PROGRAMME
FOR THE PERIOD ENDED 1 JULY 2013 TO 30 APRIL 2014**

PROJECT NO	PROJECT	2013-2014 YTD ACTUAL \$	2013-2014 YTD BUDGET \$	2013-2014 BUDGET \$	Variations Budget to YTD Actual \$	Variations Budget to YTD Actual %
	ROAD CONSTRUCTION/ REHABILITATION					
40.1036.2	Chamberlain Street	31,385	62,200	62,200	30,815	50%
40.1058.2	Elizabeth Street	48,512	54,600	54,600	6,088	11%
40.1074.2	Geraldine Street	17,506	15,800	15,800	(1,706)	(11%)
40.1098.2	Jarrad Street	19,533	19,800	19,800	267	1%
40.1164.2	Rosser Street	28,000	0	0	(28,000)	
40.1168.2	Salvado Street	37,747	27,100	27,100	(10,647)	(39%)
40.1202.2	William Street	38,349	22,800	22,800	(15,549)	(68%)
40.1204.2	Windsor Street	32,553	24,500	24,500	(8,053)	(33%)
	ROAD SAFETY & SPEED RESTRICTION					
41.1048.2	Curtin Avenue	116,080	285,000	285,000	168,920	59%
41.1060.2	Eric Street	0	75,000	75,000	75,000	100%
41.9000.2	Safety & Speed Program Yr 3	1,180	55,000	55,000	53,820	98%
	STREET FURNITURE					
42.9000.2.	Three Bin System	139,843	0	0	(139,843)	

TOWN OF COTTESLOE

**CAPITAL WORKS PROGRAMME
FOR THE PERIOD ENDED 1 JULY 2013 TO 30 APRIL 2014**

PROJECT NO	PROJECT	2013-2014 YTD ACTUAL	2013-2014 YTD BUDGET	2013-2014 BUDGET	2013-2014 BUDGET	Variances Budget to YTD Actual	Variances Budget to YTD Actual
		\$	\$	\$	\$	\$	%
	MISCELLANEOUS INFRASTRUCTURE						
43.6080.2.57	Viewing Tower - Foreshore	0	32,000	32,000	32,000	32,000	100%
43.9000.2.57	Town Centre Improvements	0	50,000	100,000	100,000	50,000	100%
43.9000.2.57	Sculpture	115,591	70,000	70,000	70,000	(45,591)	(65%)
43.1176.2	CCTV - Station Street	44,045	0	0	0	(44,045)	
43.9000.5	Upgrade to Parking Software	10,548	0	0	0	(10,548)	
	PLANT & VEHICLES						
47.9000.2.57	Passenger Vehicle - CEO	48,405	45,000	45,000	45,000	(3,405)	(8%)
47.9000.2.57	Passenger Vehicle - SPO	34,651	36,000	36,000	36,000	1,349	4%
47.9000.2.57	Passenger Vehicle - MDS	0	36,000	36,000	36,000	36,000	100%
47.9000.2.57	Passenger Vehicle - MES	34,613	36,000	36,000	36,000	1,387	4%
47.9000.2.57	Passenger Vehicle - WS	31,941	33,000	33,000	33,000	1,059	3%
47.9000.2.57	Passenger Vehicle - Ranger	34,160	35,000	35,000	35,000	840	2%
47.9000.2.57	Utility Vehicle - AWS	25,450	24,600	24,600	24,600	(850)	(3%)
47.9000.2.57	Depot Utility Vehicles (3)	66,836	71,000	71,000	71,000	4,164	6%
47.9000.2.57	Kubota Mower	24,200	29,000	29,000	29,000	4,800	17%
47.9000.2.57	Stihl Pole Pruners (2)	1,000	2,600	2,600	2,600	1,600	62%
47.9000.2.57	Stihl Chain Saws (3)	1,156	3,700	3,700	3,700	2,544	69%
47.9000.2.57	Stihl Hedge Trimmers (2)	1,000	2,000	2,000	2,000	1,000	50%
47.9000.2.57	Stihl Brush Cutters (3)	0	3,600	3,600	3,600	3,600	100%
47.9000.2.57	Concrete Saw & Trolley	2,680	0	0	0	(2,680)	

TOWN OF COTTESLOE

**CAPITAL WORKS PROGRAMME
FOR THE PERIOD ENDED 1 JULY 2013 TO 30 APRIL 2014**

PROJECT NO	PROJECT	2013-2014 YTD ACTUAL	2013-2014 YTD BUDGET	2013-2014 BUDGET	Variances Budget to YTD Actual	Variances Budget to YTD Actual
		\$	\$	\$	\$	%
	IT, OFFICE EQUIPMENT & FURNITURE					
49.9000.2.57	Civic Centre Furniture	13,125	4,167	5,000	(10,636)	(255%)
49.9000.2.57	Desktop Devices	7,020	6,363	7,636	(657)	(10%)
49.9000.2.57	Mobile Devices	4,386	3,978	4,773	(409)	(10%)
49.9000.2.57	Photocopier	18,474	16,667	20,000	(1,807)	(11%)
49.9000.2.57	TRIM Upgrade	8,561	12,500	15,000	3,939	32%
49.9000.2.57	Authority Upgrade	14,803	25,000	30,000	10,197	41%
	Offsite replication of VM's as part of Data					
49.9000.2.57	Recovery Plan	14,974	10,920	13,104	(4,054)	(37%)
49.9000.2.57	Upgrade/Replacement of Network Switches	0	3,540	4,248	3,540	100%
49.9000.2.57	Replacement of SAN	15,306	14,565	17,478	(741)	(5%)
49.9000.2.57	Virtual Server Upgrades	22,971	22,945	27,520	(26)	(0%)
49.9000.2.57	Data Rack for New Depot	0	1,045	1,254	1,045	100%
	HR Software	6,503	0	0	(6,503)	
	Totals	2,274,714	2,434,699	2,553,168	130,694	7%

TOWN OF COTTESLOE

BUDGET AMENDMENTS - SUMMARY

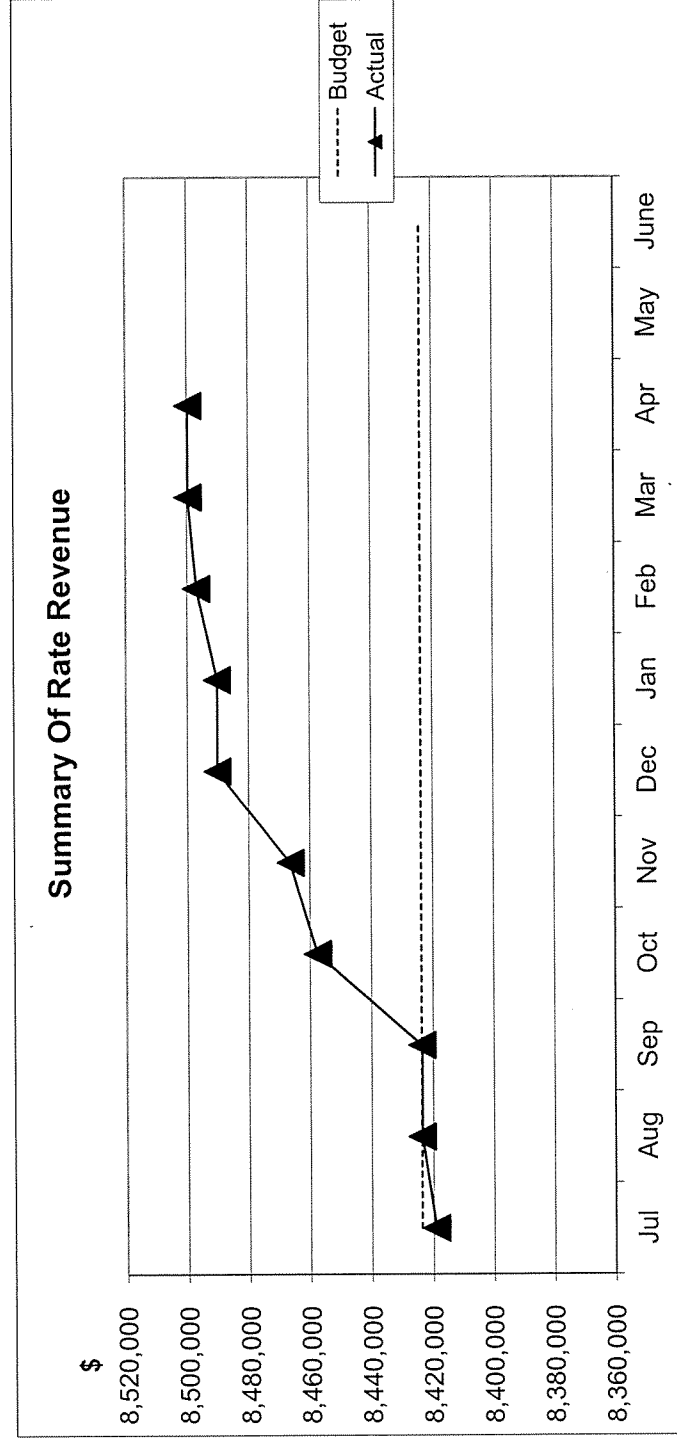
FOR THE PERIOD ENDED 1 JULY 2013 TO 30 APRIL 2014

<u>GL Account Code</u>	<u>Description</u>	<u>Council Resolution & Date</u>	<u>Classification</u>	<u>Value of Budget Amendment</u>	<u>Funding Arrangement</u>
42.9000.2	Introduction of a Three Bin System	10.4.6 July 2013	Capital Expenditure	\$ 130,000	Transfers from the waste management and Infrastructure reserves
20029.204.58	Donation to Lord Mayor's Distress Relief Fund	10.4 November 2013	Operating Expenditure	\$ 10,000	Increase the budget for donations
Various	Budget Review - Changes to Operating Schedule	10.4.24 February 2014		Various (refer Budget Review)	
47.6080.2.57	Two Beach Wheelchairs	10.3.17 March 2014	Capital Expenditure	\$ 10,000	Increase in expenditure

TOWN OF COTTESLOE

GRAPHICAL SUMMARY BY NATURE & TYPE FOR 2013 - 2014

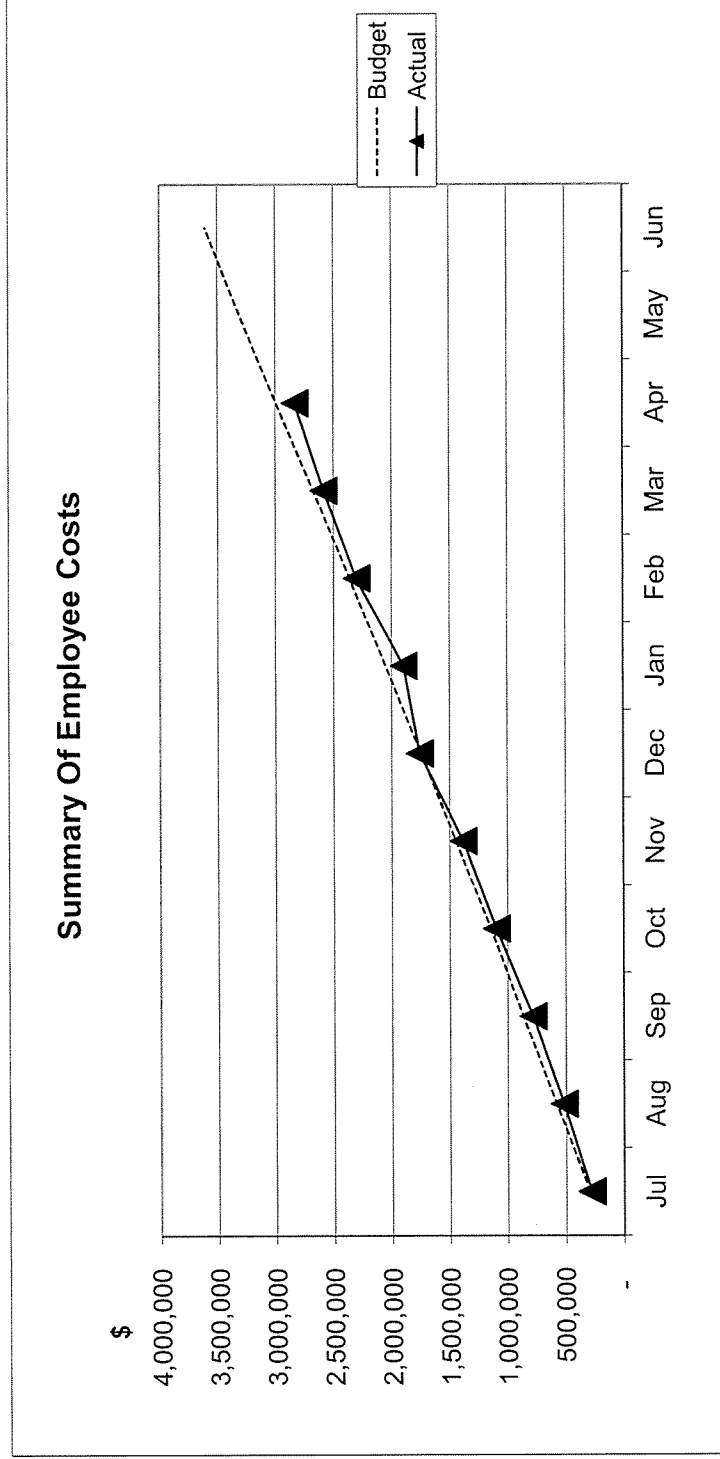
FOR THE PERIOD ENDED 1 JULY 2013 TO 30 APRIL 2014



TOWN OF COTTESLOE

GRAPHICAL SUMMARY BY NATURE & TYPE FOR 2013 - 2014

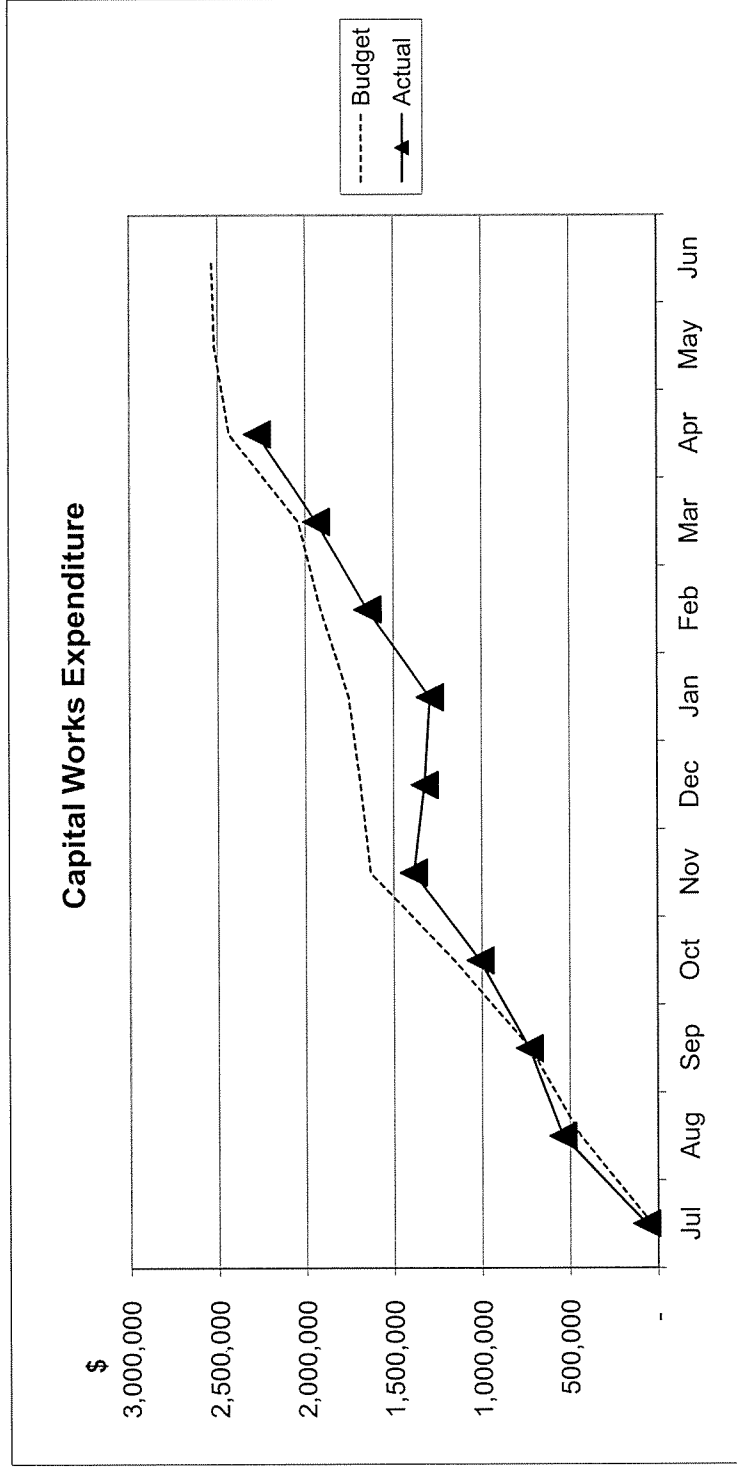
FOR THE PERIOD ENDED 1 JULY 2013 TO 30 APRIL 2014



TOWN OF COTTESLOE

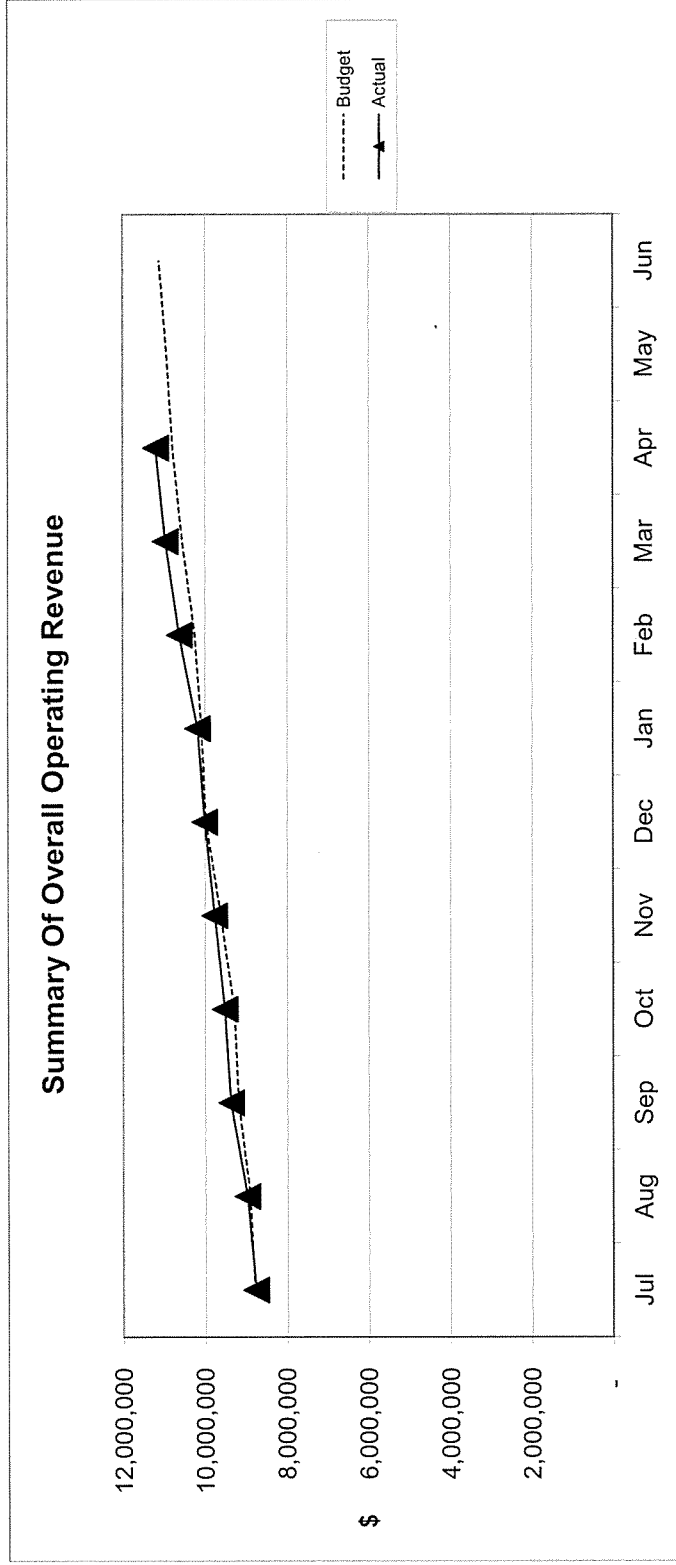
GRAPHICAL SUMMARY BY NATURE & TYPE FOR 2013 - 2014

FOR THE PERIOD ENDED 1 JULY 2013 TO 30 APRIL 2014



TOWN OF COTTESLOE

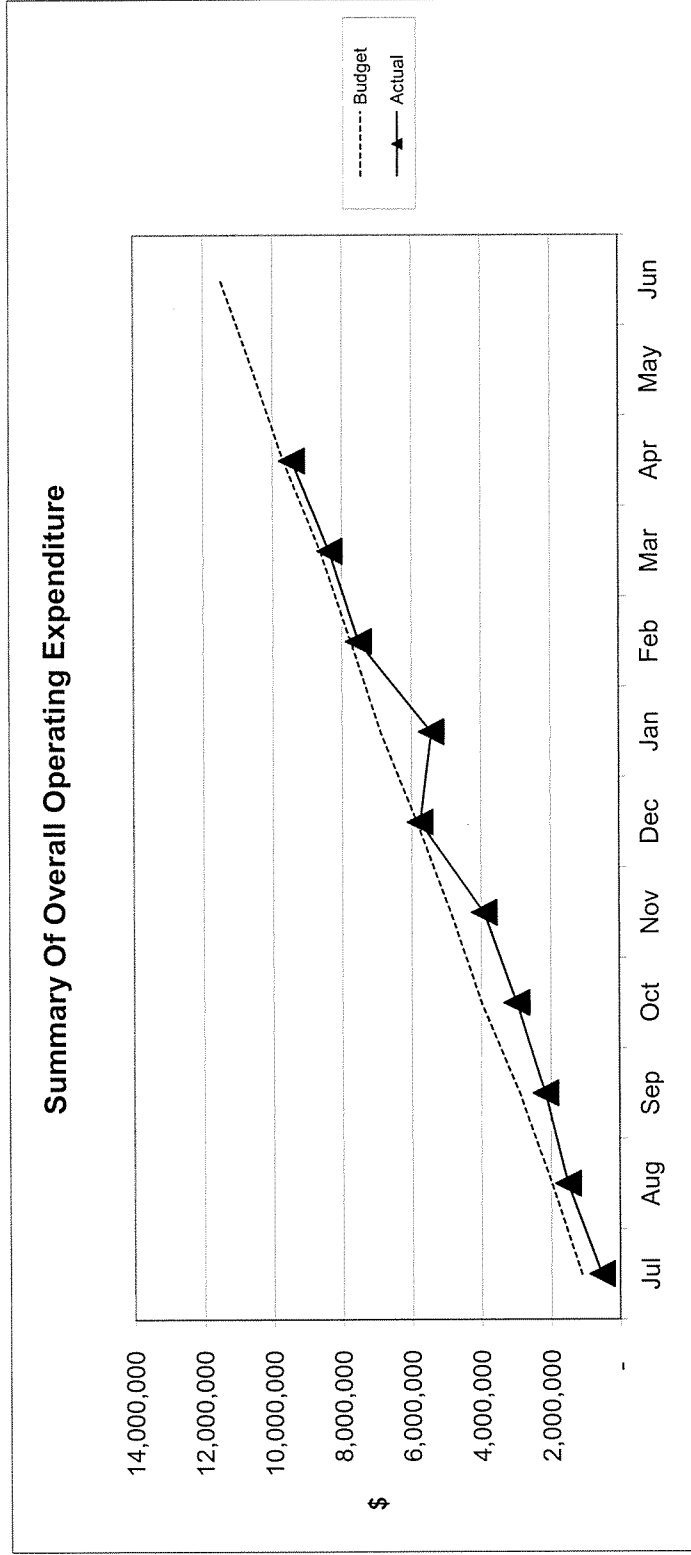
GRAPHICAL SUMMARY OF REVENUE, EXPENDITURE AND NET POSITION FOR 2013 - 2014 FOR THE PERIOD ENDED 1 JULY 2013 TO 30 APRIL 2014



TOWN OF COTTESLOE

GRAPHICAL SUMMARY OF REVENUE, EXPENDITURE AND NET POSITION FOR 2013 - 2014

FOR THE PERIOD ENDED 1 JULY 2013 TO 30 APRIL 2014



TOWN OF COTTESLOE

GRAPHICAL SUMMARY OF REVENUE, EXPENDITURE AND NET POSITION FOR 2013 - 2014

FOR THE PERIOD ENDED 1 JULY 2013 TO 30 APRIL 2014

