

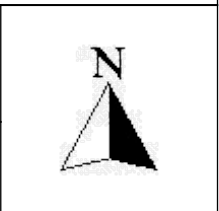


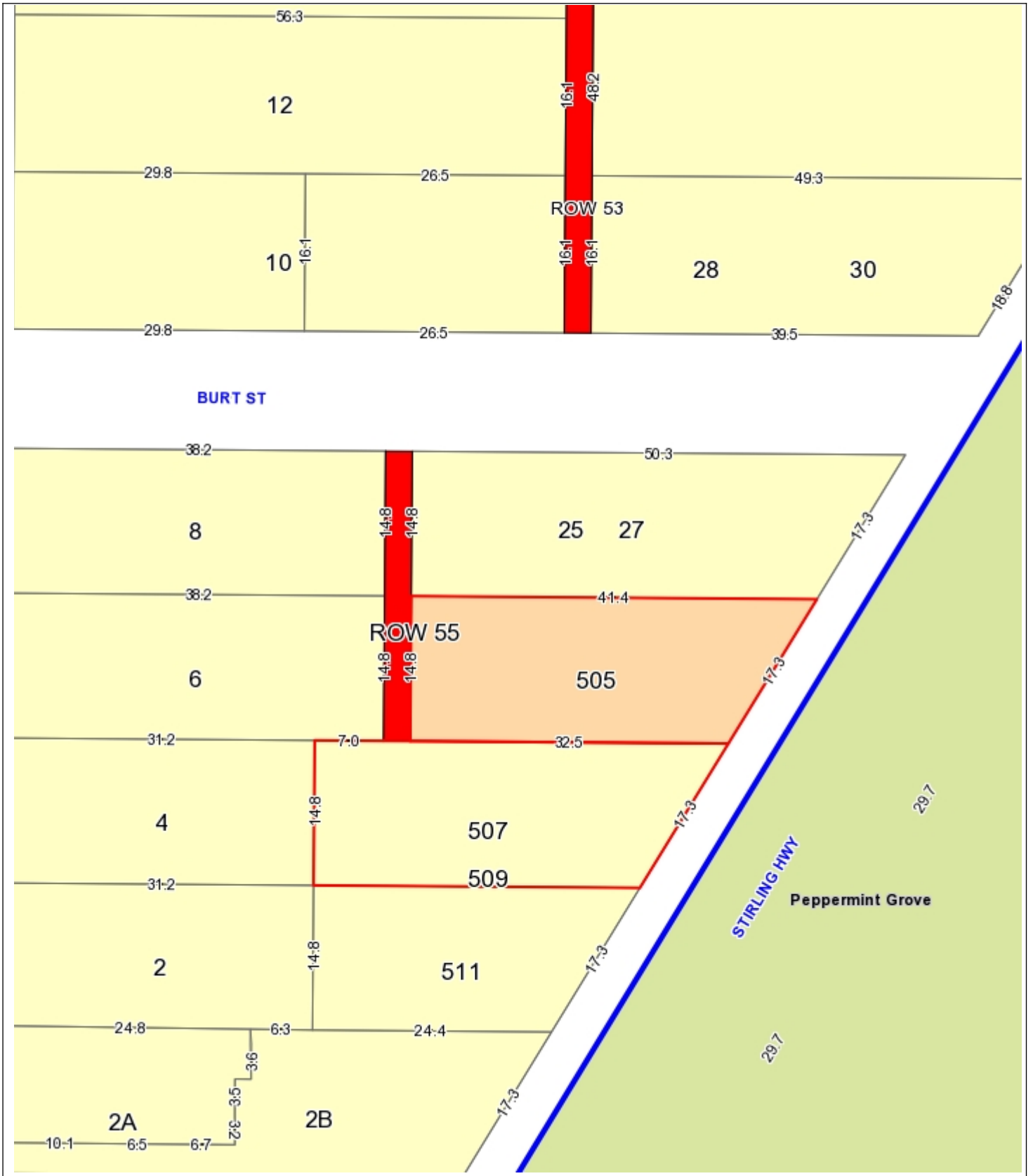
ROW 55

The Town of Cottesloe does not warrant the accuracy of information in this publication and any person using or relying upon such information does so on the basis that the Town of Cottesloe shall bear no responsibility or liability whatsoever for any errors, faults, defects or omissions in the information.

Scale 1:543

Thursday, 7 August 2014



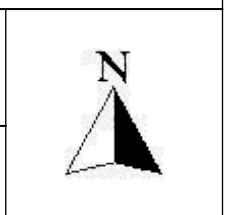


ROW 55

The Town of Cottesloe does not warrant the accuracy of information in this publication and any person using or relying upon such information does so on the basis that the Town of Cottesloe shall bear no responsibility or liability whatsoever for any errors, faults, defects or omissions in the information.

Scale 1:543

Thursday, 7 August 2014



26 June 2014

Dear Cr Rob Rowell,

**RE: ROW 55 Cottesloe**

We write in regards to ROW 55, which services 505, 507 and 509 Stirling Highway, Cottesloe. Since purchasing the 3 properties, all owners have had difficulty in identifying our homes to visitors.

The 3 property's official entries are from Stirling Highway, however, due to inadequate street frontages to Stirling Hwy, a lack of driveways or parking available on the highway, the main entrances are difficult to use.

Fortunately, we are able to access our homes via a small right of way off Burt Street (ROW 55), although it remains unnamed and unidentifiable and therefore difficult to direct guests, tradespeople and/or emergency vehicles if necessary.

It would be much appreciated if the Town of Cottesloe would consider naming the ROW in order to enable the 3 property owners to identify our homes more adequately, and to encourage safe access.

Yours Sincerely,

Penny & Tony Spicer	Frances Taylor-Johnston	Sarah Murchison & David Weir
505 Stirling Hwy	507 Stirling Hwy	509 Stirling Hwy
Cottesloe	Cottesloe	Cottesloe