

**Local Councils
Curtin Avenue Realignment
Meeting**

Meeting to be held 2:30pm May 29 2013 in Room 526 Don Aitken Centre East Perth

Attendees:

Main Roads Western Australia:

Andy Plummer
Peter Ward
Lindsay Broadhurst
Forbes Watson
Mikaela Giannasi

Town of Mosman Park:

Donovan Norgard
Kevin Poynton

Town of Cottesloe:

Lyon Edwardson
Geoff Trigg

City of Fremantle:

Dwight Kostusik

Agenda:

1. Introduction

- Welcome.
- This initial meeting is to establish contact with local councils regarding Curtin Avenue.

2. Project Background

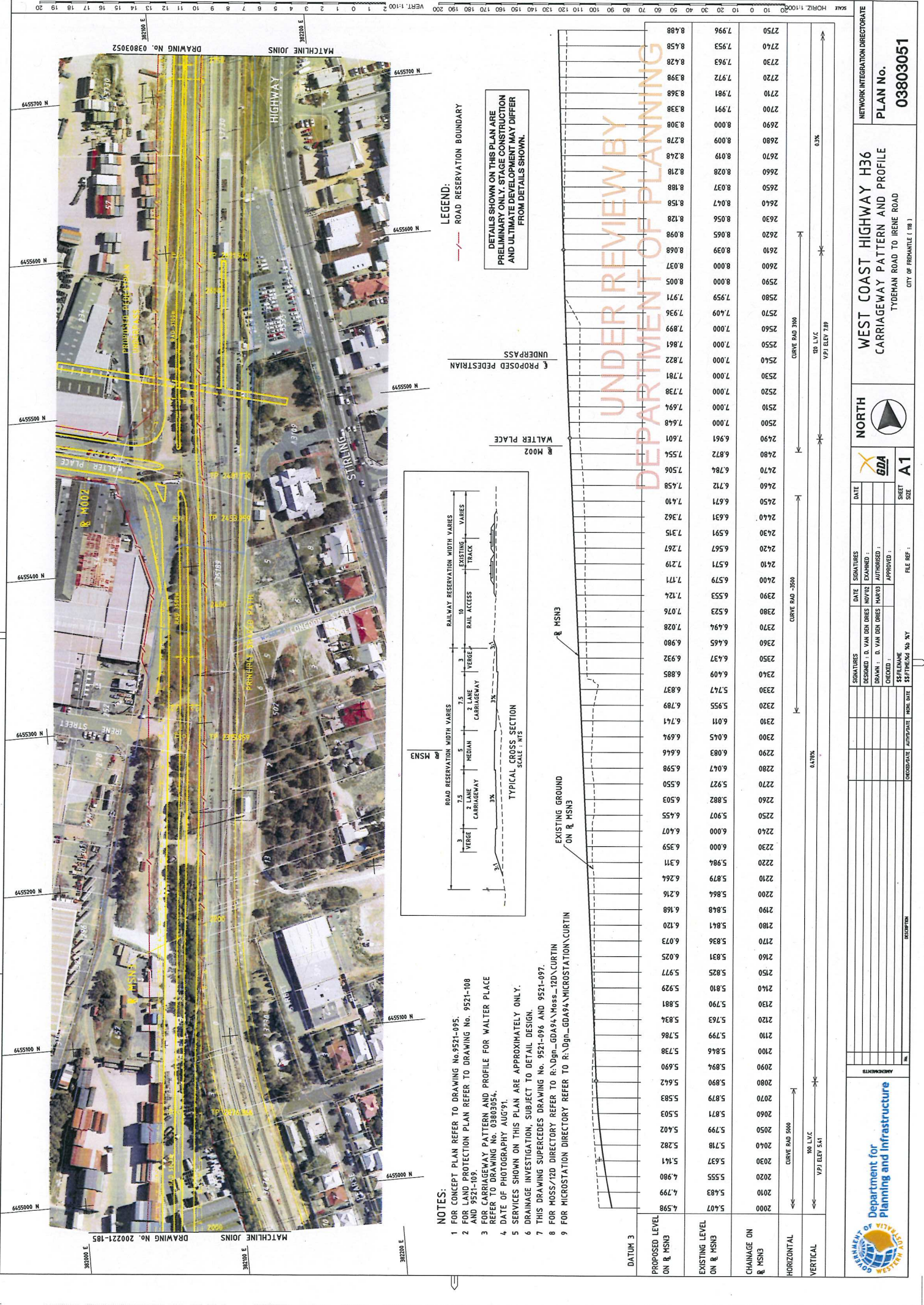
- Realignment of Curtin Avenue between Marine Parade and Walter Place to lie parallel to the Fremantle railway line.
- The purpose of this project follows stage 3 of the Leighton Oceanside Parklands Masterplan Report.

3. Project Status

- Timeframe
- Land is already acquired for where the realigned Curtin Avenue will be placed.
- Environmental assessments to the Marshalling yards.

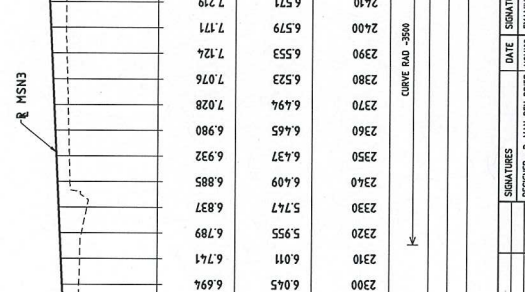
4. Local Councils Representatives

- Discuss any concerns or queries.



LEGEND:
 --- ROAD RESERVATION BOUNDARY
 --- PROPOSED PEDESTRIAN UNDERPASS

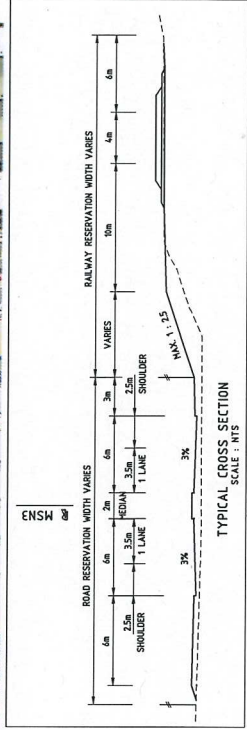
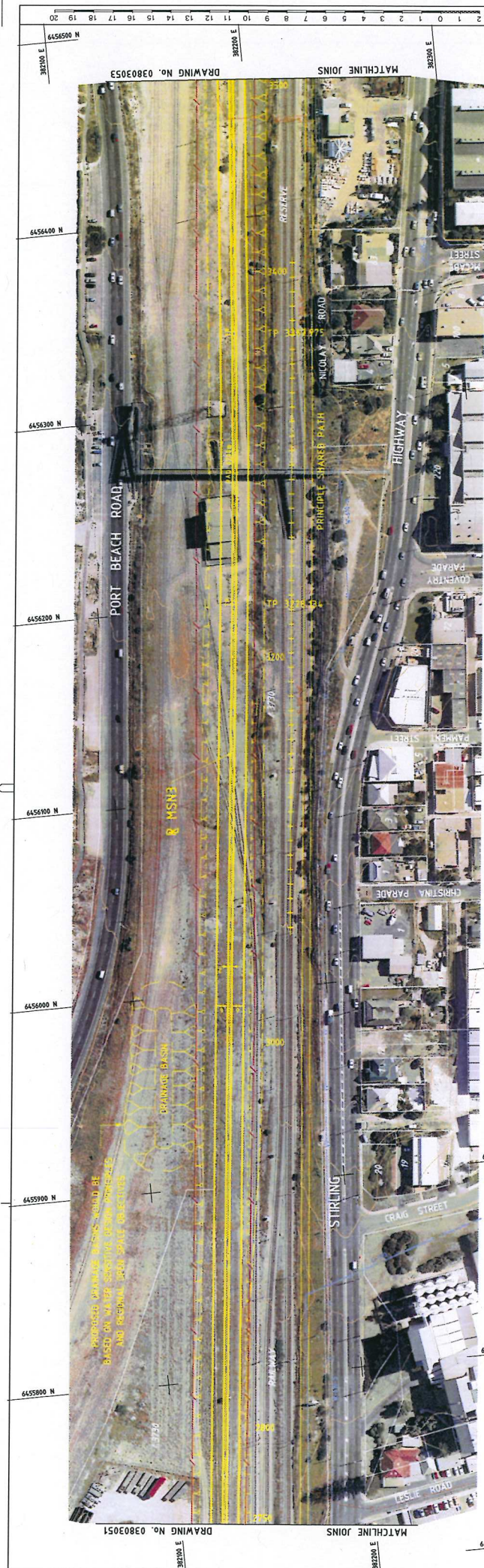
NOTES:
 1 FOR CONCEPT PLAN REFER TO DRAWING No.9521-095.
 2 FOR LAND PROTECTION PLAN REFER TO DRAWING No. 9521-108 AND 9521-109.
 3 FOR CARRIAGEWAY PATTERN AND PROFILE FOR WALTER PLACE REFER TO DRAWING No. 03803054.
 4 DATE OF PHOTOGRAPHY AUG'91.
 5 SERVICES SHOWN ON THIS PLAN ARE APPROXIMATELY ONLY.
 6 DRAINAGE INVESTIGATION, SUBJECT TO DETAIL DESIGN.
 7 THIS DRAWING SUPERCEDES DRAWING No. 9521-096 AND 9521-097.
 8 FOR MOSS/72D DIRECTORY REFER TO R:\Dgn-GDA94\Moss_72D\CURTIN
 9 FOR MICROSTATION DIRECTORY REFER TO R:\Dgn-GDA94\MICROSTATION\CURTIN



PROPOSED LEVEL ON R/ MSN3	EXISTING LEVEL ON R/ MSN3	CHANGE ON R/ MSN3	HORIZONTAL	VERTICAL
4.598	5.407	2000	2000	2000
4.799	5.483	2010	2010	2010
4.980	5.555	2020	2020	2020
5.141	5.637	2030	2030	2030
5.282	5.718	2040	2040	2040
5.402	5.799	2050	2050	2050
5.503	5.871	2060	2060	2060
5.583	5.879	2070	2070	2070
5.642	5.890	2080	2080	2080
5.690	5.896	2090	2090	2090
5.738	5.886	2100	2100	2100
5.786	5.799	2110	2110	2110
5.834	5.799	2120	2120	2120
5.881	5.790	2130	2130	2130
5.929	5.810	2140	2140	2140
5.977	5.825	2150	2150	2150
6.025	5.831	2160	2160	2160
6.073	5.836	2170	2170	2170
6.120	5.841	2180	2180	2180
6.168	5.848	2190	2190	2190
6.216	5.879	2200	2200	2200
6.264	5.879	2210	2210	2210
6.311	5.987	2220	2220	2220
6.359	5.987	2230	2230	2230
6.407	6.000	2240	2240	2240
6.455	6.000	2250	2250	2250
6.503	6.000	2260	2260	2260
6.550	5.927	2270	2270	2270
6.598	5.927	2280	2280	2280
6.646	6.077	2290	2290	2290
6.694	6.083	2300	2300	2300
6.741	6.011	2310	2310	2310
6.789	6.011	2320	2320	2320
6.837	5.955	2330	2330	2330
6.885	6.409	2340	2340	2340
6.932	6.437	2350	2350	2350
6.980	6.465	2360	2360	2360
7.028	6.494	2370	2370	2370
7.076	6.523	2380	2380	2380
7.124	6.553	2390	2390	2390
7.171	6.579	2400	2400	2400
7.219	6.571	2410	2410	2410
7.267	6.591	2420	2420	2420
7.315	6.591	2430	2430	2430
7.362	6.631	2440	2440	2440
7.410	6.671	2450	2450	2450
7.458	6.712	2460	2460	2460
7.506	6.784	2470	2470	2470
7.554	7.054	2480	2480	2480
7.602	7.554	2490	2490	2490
7.650	7.602	2500	2500	2500
7.698	7.602	2510	2510	2510
7.746	7.648	2520	2520	2520
7.794	7.700	2530	2530	2530
7.842	7.700	2540	2540	2540
7.890	7.822	2550	2550	2550
7.938	7.861	2560	2560	2560
7.986	7.938	2570	2570	2570
8.034	7.999	2580	2580	2580
8.082	8.000	2590	2590	2590
8.130	8.000	2600	2600	2600
8.178	8.000	2610	2610	2610
8.226	8.000	2620	2620	2620
8.274	8.000	2630	2630	2630
8.322	8.000	2640	2640	2640
8.370	8.000	2650	2650	2650
8.418	8.000	2660	2660	2660
8.466	8.000	2670	2670	2670
8.514	8.000	2680	2680	2680
8.562	8.000	2690	2690	2690
8.610	8.000	2700	2700	2700
8.658	8.000	2710	2710	2710
8.706	8.000	2720	2720	2720
8.754	8.000	2730	2730	2730
8.802	8.000	2740	2740	2740
8.850	8.000	2750	2750	2750
8.898	8.000	2760	2760	2760
8.946	8.000	2770	2770	2770
8.994	8.000	2780	2780	2780
9.042	8.000	2790	2790	2790
9.090	8.000	2800	2800	2800
9.138	8.000	2810	2810	2810
9.186	8.000	2820	2820	2820
9.234	8.000	2830	2830	2830
9.282	8.000	2840	2840	2840
9.330	8.000	2850	2850	2850
9.378	8.000	2860	2860	2860
9.426	8.000	2870	2870	2870
9.474	8.000	2880	2880	2880
9.522	8.000	2890	2890	2890
9.570	8.000	2900	2900	2900
9.618	8.000	2910	2910	2910
9.666	8.000	2920	2920	2920
9.714	8.000	2930	2930	2930
9.762	8.000	2940	2940	2940
9.810	8.000	2950	2950	2950
9.858	8.000	2960	2960	2960
9.906	8.000	2970	2970	2970
9.954	8.000	2980	2980	2980
10.002	8.000	2990	2990	2990
10.050	8.000	3000	3000	3000

UNDER REVIEW BY
 DEPARTMENT OF PLANNING

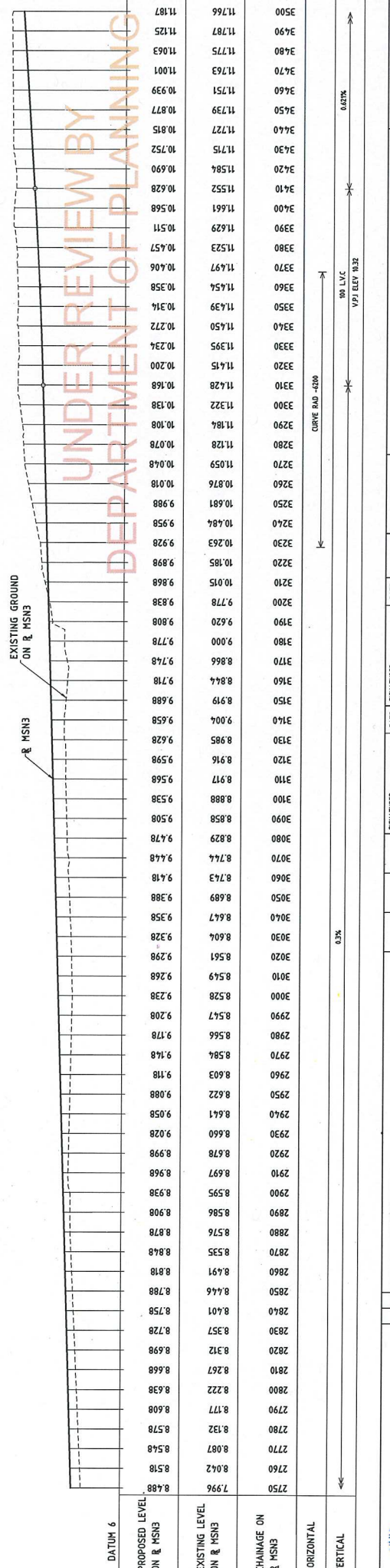
Department for Planning and Infrastructure		WEST COAST HIGHWAY H36		NETWORK INTEGRATION DIRECTORATE	
CARRIAGEWAY PATTERN AND PROFILE		PLAN No.		03803051	
TYDEMAN ROAD TO IRENE ROAD		CITY OF PREBRANTZ (118)		DRAWING No. 03803052	
DATE		SIGNATURES		SHEET SIZE	
DESIGNED: D. VAN DEN DRIES		DRAWN: D. VAN DEN DRIES		A1	
CHECKED:		APPROVED:		FILE REF:	
DATE		DATE		DATE	
NOV02		NOV02		NOV02	
NOV02		NOV02		NOV02	
NOV02		NOV02		NOV02	



LEGEND:
 ROAD RESERVATION BOUNDARY

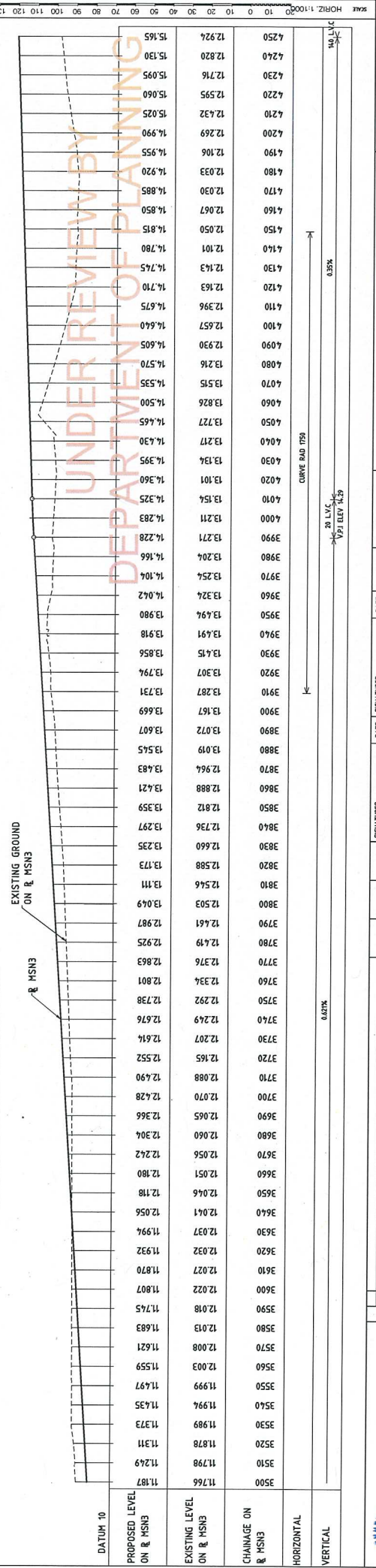
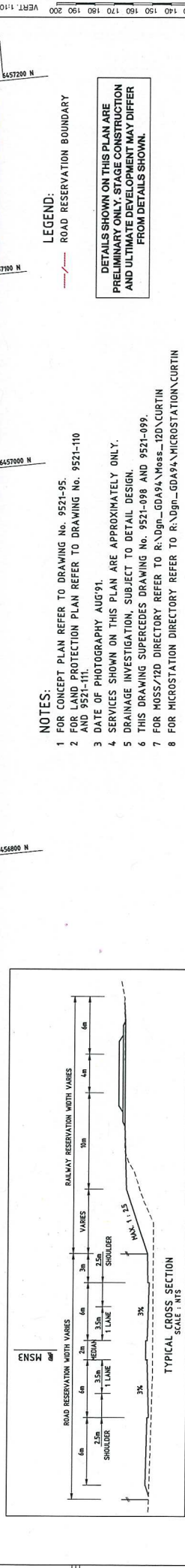
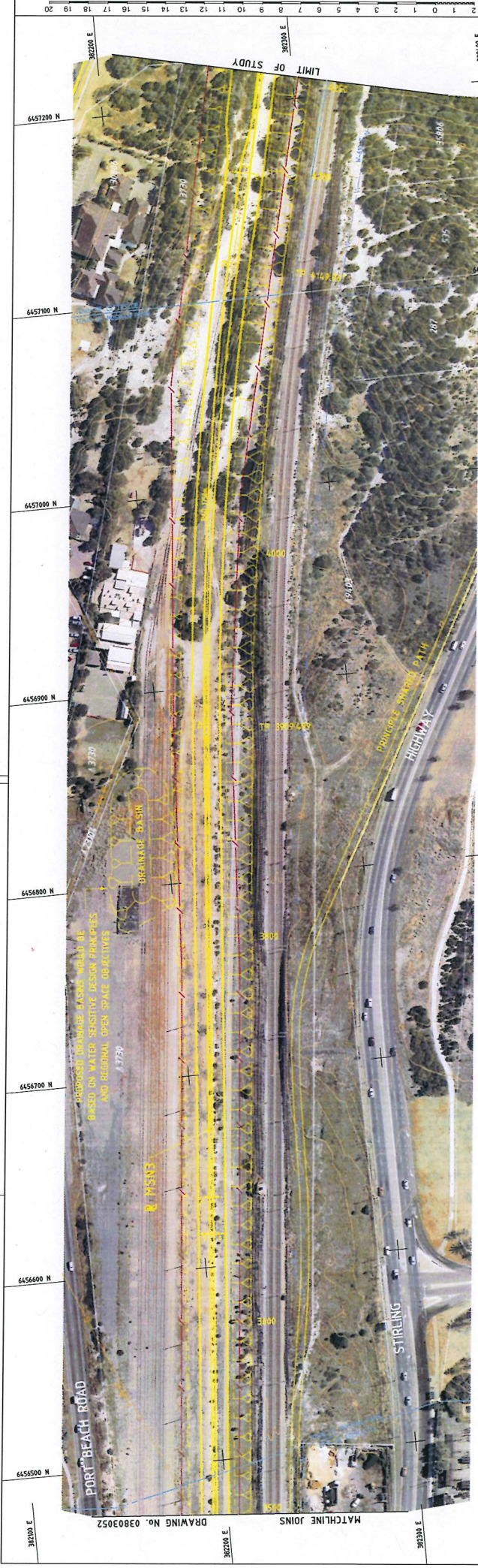
DETAILS SHOWN ON THIS PLAN ARE PRELIMINARY ONLY. STAGE CONSTRUCTION AND ULTIMATE DEVELOPMENT MAY DIFFER FROM DETAILS SHOWN.

- NOTES:**
- FOR CONCEPT PLAN REFER TO DRAWING NO. 9521-95.
 - FOR LAND PROTECTION PLAN REFER TO DRAWING NO. 9521-109 AND 9521-110.
 - DATE OF PHOTOGRAPHY AUG'91.
 - SERVICES SHOWN ON THIS PLAN ARE APPROXIMATELY ONLY.
 - DRAINAGE INVESTIGATION, SUBJECT TO DETAIL DESIGN.
 - THIS DRAWING SUPERCEDES DRAWING NO. 9521-097 AND 9521-098.
 - FOR MOSS/12D DIRECTORY REFER TO R:\Dgn-GDA94\Moss_12D\CURTIN
 - FOR MICROSTATION DIRECTORY REFER TO R:\Dgn-GDA94\MICROSTATION\CURTIN



STATION	ELEVATION
2750	7796
2760	8042
2770	8087
2780	8177
2800	8222
2810	8267
2820	8312
2830	8357
2840	8401
2850	8446
2860	8491
2870	8535
2880	8576
2890	8586
2900	8595
2910	8597
2920	8678
2930	8660
2940	8641
2950	8622
2960	8603
2970	8584
2980	8566
2990	8547
3000	8528
3010	8549
3020	8561
3030	8604
3040	8647
3050	8689
3060	8743
3070	8744
3080	8829
3090	8858
3100	8888
3110	8917
3120	8916
3130	8985
3140	9004
3150	8919
3160	8844
3170	8866
3180	9000
3190	9420
3200	9778
3210	10015
3220	10185
3230	10263
3240	10484
3250	10681
3260	10876
3270	11059
3280	1128
3290	1184
3300	11322
3310	11428
3320	11415
3330	11395
3340	11450
3350	11439
3360	11454
3370	11497
3380	11523
3390	11629
3400	11661
3410	11552
3420	11584
3430	11751
3440	11727
3450	11739
3460	11751
3470	11763
3480	11775
3490	11787
3500	11766

DATE	SIGNATURES	DATE	SIGNATURES	FILE REF.
	DESIGNED: D. VAN DEN DRIES	NOV02	EXAMINED:	
	DRAWN: D. VAN DEN DRIES	MAR03	AUTHORISED:	
	CHECKED:		APPROVED:	
	DATE RELEASED:			
	ISSUED DATE:			
	REVISIONS:			



PROPOSED LEVEL ON R. MSN3	EXISTING LEVEL ON R. MSN3	CHANGING ON R. MSN3	HORIZONTAL	VERTICAL
11.766	11.766			
11.787	11.798	11.798		
11.829	11.878	11.878		
11.933	11.939	11.939		
11.974	11.974	11.974		
12.003	11.999	11.999		
12.033	12.003	12.003		
12.063	12.033	12.033		
12.093	12.063	12.063		
12.123	12.093	12.093		
12.153	12.123	12.123		
12.183	12.153	12.153		
12.213	12.183	12.183		
12.243	12.213	12.213		
12.273	12.243	12.243		
12.303	12.273	12.273		
12.333	12.303	12.303		
12.363	12.333	12.333		
12.393	12.363	12.363		
12.423	12.393	12.393		
12.453	12.423	12.423		
12.483	12.453	12.453		
12.513	12.483	12.483		
12.543	12.513	12.513		
12.573	12.543	12.543		
12.603	12.573	12.573		
12.633	12.603	12.603		
12.663	12.633	12.633		
12.693	12.663	12.663		
12.723	12.693	12.693		
12.753	12.723	12.723		
12.783	12.753	12.753		
12.813	12.783	12.783		
12.843	12.813	12.813		
12.873	12.843	12.843		
12.903	12.873	12.873		
12.933	12.903	12.903		
12.963	12.933	12.933		
12.993	12.963	12.963		
13.023	12.993	12.993		
13.053	13.023	13.023		
13.083	13.053	13.053		
13.113	13.083	13.083		
13.143	13.113	13.113		
13.173	13.143	13.143		
13.203	13.173	13.173		
13.233	13.203	13.203		
13.263	13.233	13.233		
13.293	13.263	13.263		
13.323	13.293	13.293		
13.353	13.323	13.323		
13.383	13.353	13.353		
13.413	13.383	13.383		
13.443	13.413	13.413		
13.473	13.443	13.443		
13.503	13.473	13.473		
13.533	13.503	13.503		
13.563	13.533	13.533		
13.593	13.563	13.563		
13.623	13.593	13.593		
13.653	13.623	13.623		
13.683	13.653	13.653		
13.713	13.683	13.683		
13.743	13.713	13.713		
13.773	13.743	13.743		
13.803	13.773	13.773		
13.833	13.803	13.803		
13.863	13.833	13.833		
13.893	13.863	13.863		
13.923	13.893	13.893		
13.953	13.923	13.923		
13.983	13.953	13.953		
14.013	13.983	13.983		
14.043	14.013	14.013		
14.073	14.043	14.043		
14.103	14.073	14.073		
14.133	14.103	14.103		
14.163	14.133	14.133		
14.193	14.163	14.163		
14.223	14.193	14.193		
14.253	14.223	14.223		
14.283	14.253	14.253		
14.313	14.283	14.283		
14.343	14.313	14.313		
14.373	14.343	14.343		
14.403	14.373	14.373		
14.433	14.403	14.403		
14.463	14.433	14.433		
14.493	14.463	14.463		
14.523	14.493	14.493		
14.553	14.523	14.523		
14.583	14.553	14.553		
14.613	14.583	14.583		
14.643	14.613	14.613		
14.673	14.643	14.643		
14.703	14.673	14.673		
14.733	14.703	14.703		
14.763	14.733	14.733		
14.793	14.763	14.763		
14.823	14.793	14.793		
14.853	14.823	14.823		
14.883	14.853	14.853		
14.913	14.883	14.883		
14.943	14.913	14.913		
14.973	14.943	14.943		
15.003	14.973	14.973		
15.033	15.003	15.003		
15.063	15.033	15.033		
15.093	15.063	15.063		
15.123	15.093	15.093		
15.153	15.123	15.123		

- NOTES:**
- 1 FOR CONCEPT PLAN REFER TO DRAWING No. 9521-95.
 - 2 FOR LAND PROTECTION PLAN REFER TO DRAWING No. 9521-110 AND 9521-111.
 - 3 DATE OF PHOTOGRAPHY AUG'91.
 - 4 SERVICES SHOWN ON THIS PLAN ARE APPROXIMATELY ONLY.
 - 5 DRAINAGE INVESTIGATION, SUBJECT TO DETAIL DESIGN.
 - 6 THIS DRAWING SUPERCEDES DRAWING No. 9521-098 AND 9521-099.
 - 7 FOR MOSS/72D DIRECTORY REFER TO R:\Dgn_GDA94\Moss_72D\CURTIN
 - 8 FOR MICROSTATION DIRECTORY REFER TO R:\Dgn_GDA94\MICROSTATION\CURTIN

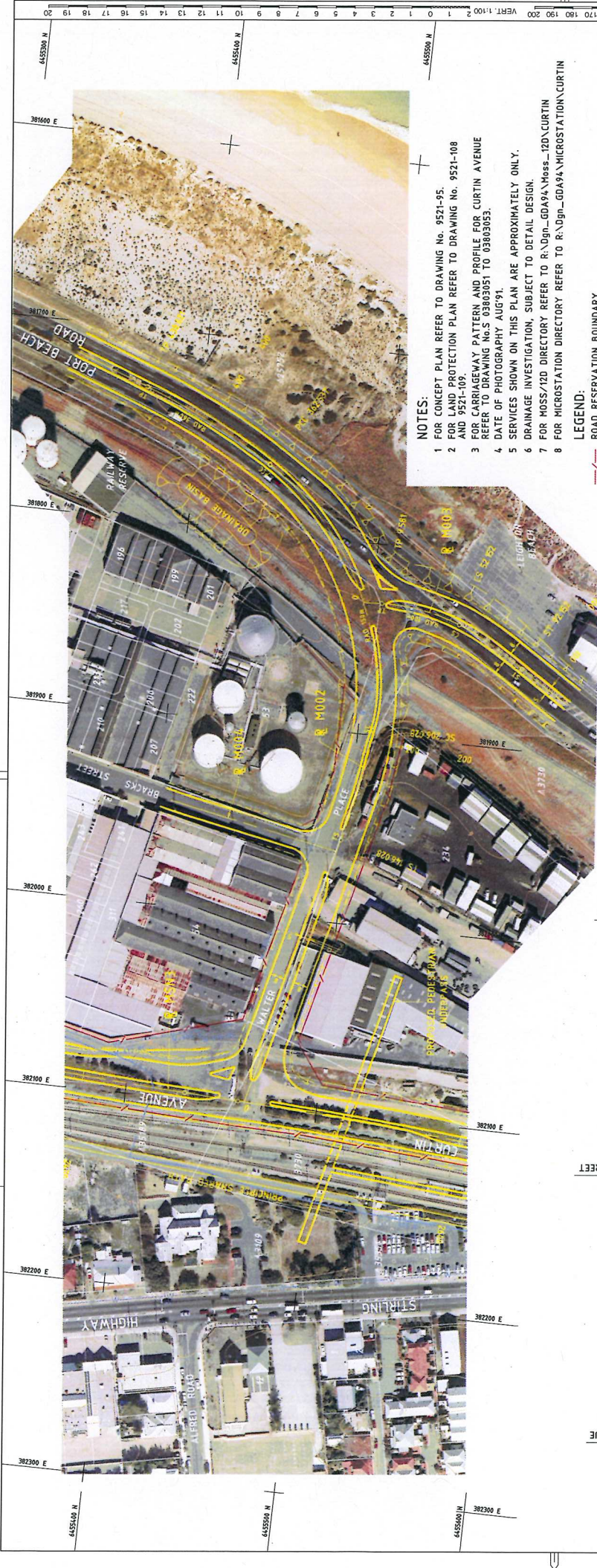
LEGEND:

- ROAD RESERVATION BOUNDARY

DETAILS SHOWN ON THIS PLAN ARE PRELIMINARY ONLY. STAGE CONSTRUCTION AND ULTIMATE DEVELOPMENT MAY DIFFER FROM DETAILS SHOWN.

Department for Planning and Infrastructure
 NETWORK INTEGRATION DIRECTORATE
PLAN No. 03803053
WEST COAST HIGHWAY H36
 CARRIAGEWAY PATTERN AND PROFILE
 SOUTH OF WELLINGTON STREET
 CITY OF FREMANTLE (18), TOWN OF HOSHAM PARK (101), TOWN OF COTTESLOE (116)

NORTH
 GDA
 DATE: _____
 SIGNATURES: _____
 DESIGNED: D. VAN DEN DRIES NOV02 EXAMINED: _____
 DRAWN: D. VAN DEN DRIES MAR03 APPROVED: _____
 CHECKED: _____
 FILE REF: _____
 SHEET SIZE: **A1**

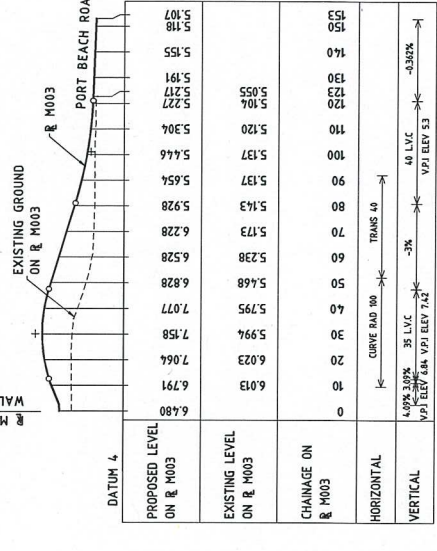
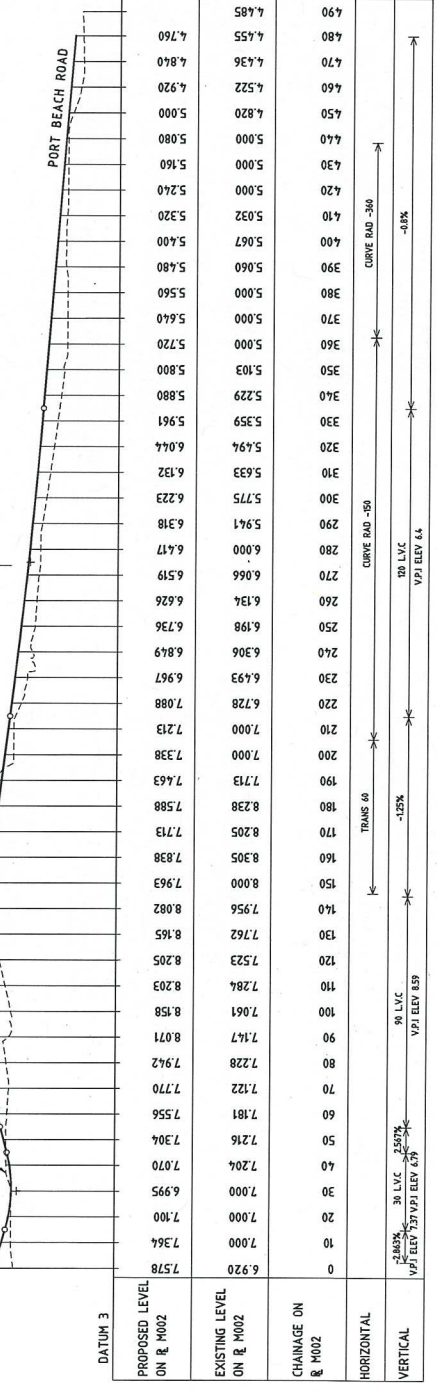


- NOTES:**
- 1 FOR CONCEPT PLAN REFER TO DRAWING No. 9521-95.
 - 2 FOR LAND PROTECTION PLAN REFER TO DRAWING No. 9521-108 AND 9521-109.
 - 3 FOR CARRIAGEWAY PATTERN AND PROFILE FOR CURTIN AVENUE REFER TO DRAWING No.S 03803051 TO 03803053.
 - 4 DATE OF PHOTOGRAPHY AUG'91.
 - 5 SERVICES SHOWN ON THIS PLAN ARE APPROXIMATELY ONLY.
 - 6 DRAINAGE INVESTIGATION, SUBJECT TO DETAIL DESIGN.
 - 7 FOR MOSS/12D DIRECTORY REFER TO R:\Dgn_GDA94\Moss_12D\CURTIN
 - 8 FOR MICROSTATION DIRECTORY REFER TO R:\Dgn_GDA94\MICROSTATION\CURTIN

LEGEND:
 --- ROAD RESERVATION BOUNDARY

DETAILS SHOWN ON THIS PLAN ARE
 PRELIMINARY ONLY. STAGE CONSTRUCTION
 AND ULTIMATE DEVELOPMENT MAY DIFFER
 FROM DETAILS SHOWN.

UNDER REVIEW BY
 DEPARTMENT OF PLANNING



Department for Planning and Infrastructure

City of Brisbane (QB)

NETWORK INTEGRATION DIRECTORATE

PLAN No. **03803054**

WEST COAST HIGHWAY H36

CARRIAGEWAY PATTERN AND PROFILE

TYDEMAN ROAD TO IRENE ROAD

CITY OF BRISBANE (QB)

DATE: _____

SIGNATURES: _____

DESIGNED: D. VAN DEN BRIES (M002) EXAMINED: _____

DRAWN: D. VAN DEN BRIES (M003) AUTHORIZED: _____

CHECKED: _____ APPROVED: _____

FILE REF: _____

SHEET SIZE: **A1**

DESCRIPTION: _____

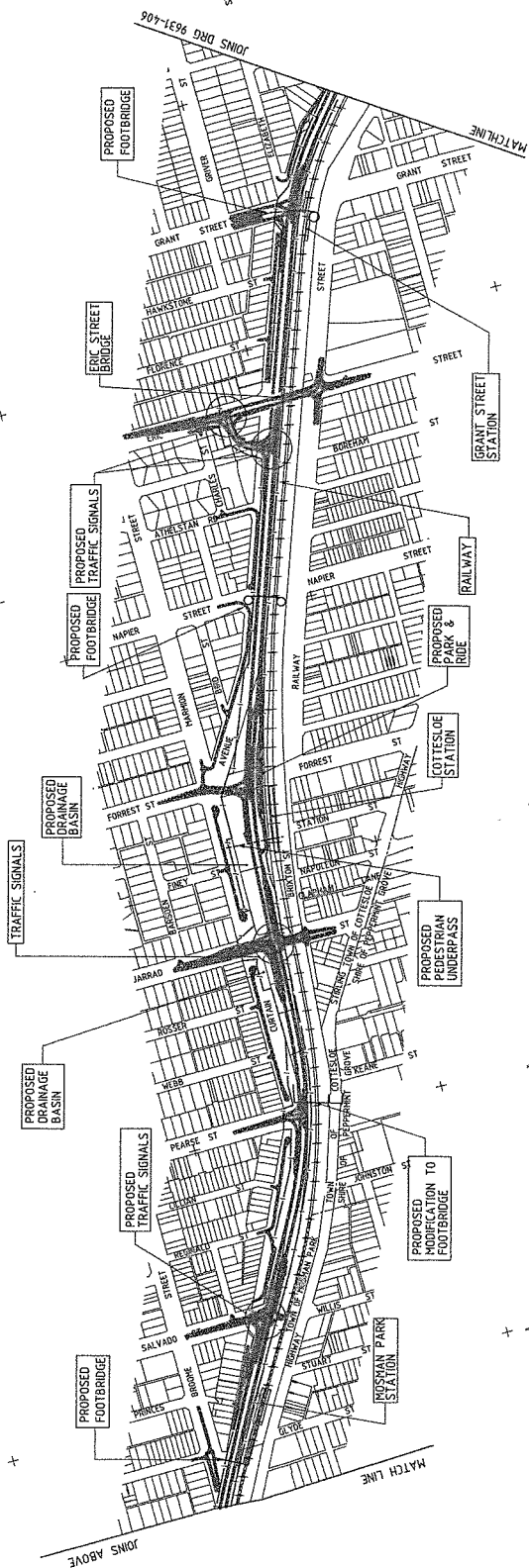
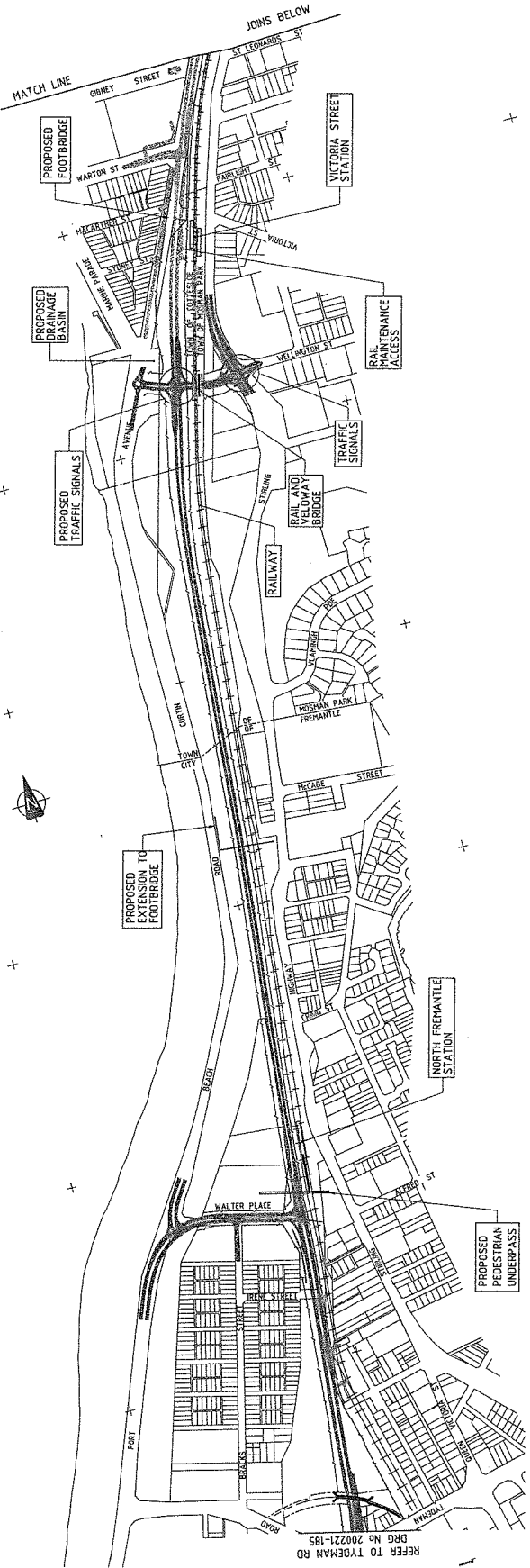
DATE: _____

Department for Planning and Infrastructure

City of Brisbane (QB)

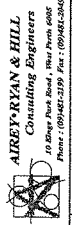
NETWORK INTEGRATION DIRECTORATE

PLAN No. **03803054**



- NOTES**
1. FOR CARRIAGEWAY PATTERN AND PROFILES REFER TO DRAWINGS 0303051 TO 0303054.
 2. FOR LAND PROTECTION PLANS REFER TO DRAWINGS 9521-003 TO 116.
 3. FOR CONCEPT PLAN OF STIRLING HWY REFER TO DRAWING 9521-44.

- LEGEND:**
- DENOTES ULTIMATE CARRIAGEWAY PATTERN
 - ROAD RESERVATION BOUNDARY
 - RAIL RESERVATION BOUNDARY



AIZREY-RYAN & HILL
 Consulting Engineers
 10 Stuarth Park Road, Perth, WA 6006
 Phone: (08)94223199 Fax: (08)94223200

ROAD NETWORK PLANNING BRANCH
 DRAWING TITLE: 03:01
 DRAWING NUMBER: 9521-95-1

MAIN ROADS
 Western Australia

CURTIN AVENUE / PORT BEACH ROAD
 CONCEPT PLAN
 TYDEMAN ROAD TO SERVATUS STREET
 TOWN OF COTTESLOE (THE TOWN OF ROSHAN PARK (1911) TOWN OF CLERMONT (116) CITY OF FREMANTLE (118))
 LOCAL AUTHORITY:

DATE	07/79
APPROVED	C. MOORE
DATE	7/8/95
APPROVED	RECORDED
DATE	JULY 98
APPROVED	

DESIGNER	IN CHARGE
CHECKED	APPROVED
DATE	DATE
BY	BY
DATE	DATE
BY	BY
DATE	DATE
BY	BY

IN THE INTEREST OF THE APPROVED DRAWING THE DRAWING SHALL BE TREATED AS RESERVATION
 SINCE PRINTED IN FULL

THIS DRAWING IS AN AMENDMENT OF THE APPROVED DRAWING
 PROPOSED CURRAGEWAY AND RESERVATION BOUNDARY AMENDED FROM TYDEMAN ROAD TO WELINGTON STREET



LOT 508 - CURTIN AVENUE
COTTESLOE / MOSMAN PARK / NORTH FREMANTLE



APPENDIX 2: SURVEY EXTENT



CURTIN AVENUE RE-ALIGNMENT



Legend

- Re-Alignment
- Future Construction

Marine Parade

Cables Artificial Surf Reef

Mosman Beach

Railway Reserve

Speed limit of 8 knots applies 200 metres from shoreline

Leighton Beach Boulevard

Leighton Beach

Walter Place

Port Beach



ASSET AND NETWORK INFORMATION

TRIM Doc No 1321-0002/00



From: Geoff Trigg
Sent: Thursday, 13 June 2013 11:35 AM
To: #Councillors; Mayor-KevinMorgan; #All Senior Staff
Cc: Dave Derwin; Engineering Technical Officer
Subject: FW: RE: MRWA Curtin Avenue Realignment Proposal

Councillors,

Engineering staff recently attended a meeting at the Main Roads East Perth building, to be informed of the approved 3 year project to construct a new alignment for Curtin Avenue, from the new residential development at Leighton to the area around the Marine Parade roundabout. Representatives also attended from Mosman Park and Fremantle.

The facts concerning this project are:

- It is a 3 year project with a \$40m budget, with \$2m to be spent in 2013/14 on data collection, survey and design. The second year budget is \$11m and in the third year the remainder of the \$40m will be spent on actual construction.
- It is 'early days' regarding the final design. The new road will be a single lane in both directions but with generous widths for lanes and unsealed shoulders.
- It has not been determined how the north end will be finished ie how the existing Council roundabout at the Marine Parade intersection will be treated and if the originally proposed Wellington St. subway under the rail line to the new road will be installed.
- No secondary works are included in the new road construction . There is no PSP construction proposed for the new route in this project in the \$40m budget. Also, no upgrades of beach parking or access are included.
- This project was promised before the recent State Election. Main Roads staff do not know why this section has been funded before other sections. It is also not known whether the new alignment will be renamed Curtin Avenue and an alternative name given to the old alignment or whether this will be a new section of the West Coast Highway.
- Recent surveying on West Coast Highway north of the SAS barracks has no connection to this project. Designs are being undertaken for that single lane section but no funding exists for construction. The same applies to design work on a future Eric Street bridge replacement and the future PSP extension on the east side of Curtin Avenue south of Grant Street.

Further information will be provided to Council as the Curtin Avenue Realignment project develops.

Regards,

Geoff Trigg
Manager Engineering Services