

Table 8.2 Minimum clearance distances for aerial fireworks

Size of aerial shell	Minimum clearance distance
Up to and including 75 mm	45 m
100 mm	75 m
125 mm	100 m
150 mm	150 m
200 mm	200 m
250 mm	250 m
300 mm	300 m
Over 300 mm	As required by the Chief Officer

Western Australian Outdoor Fireworks Code of Practice (<http://www.dmp.wa.gov.au/6684.aspx>)

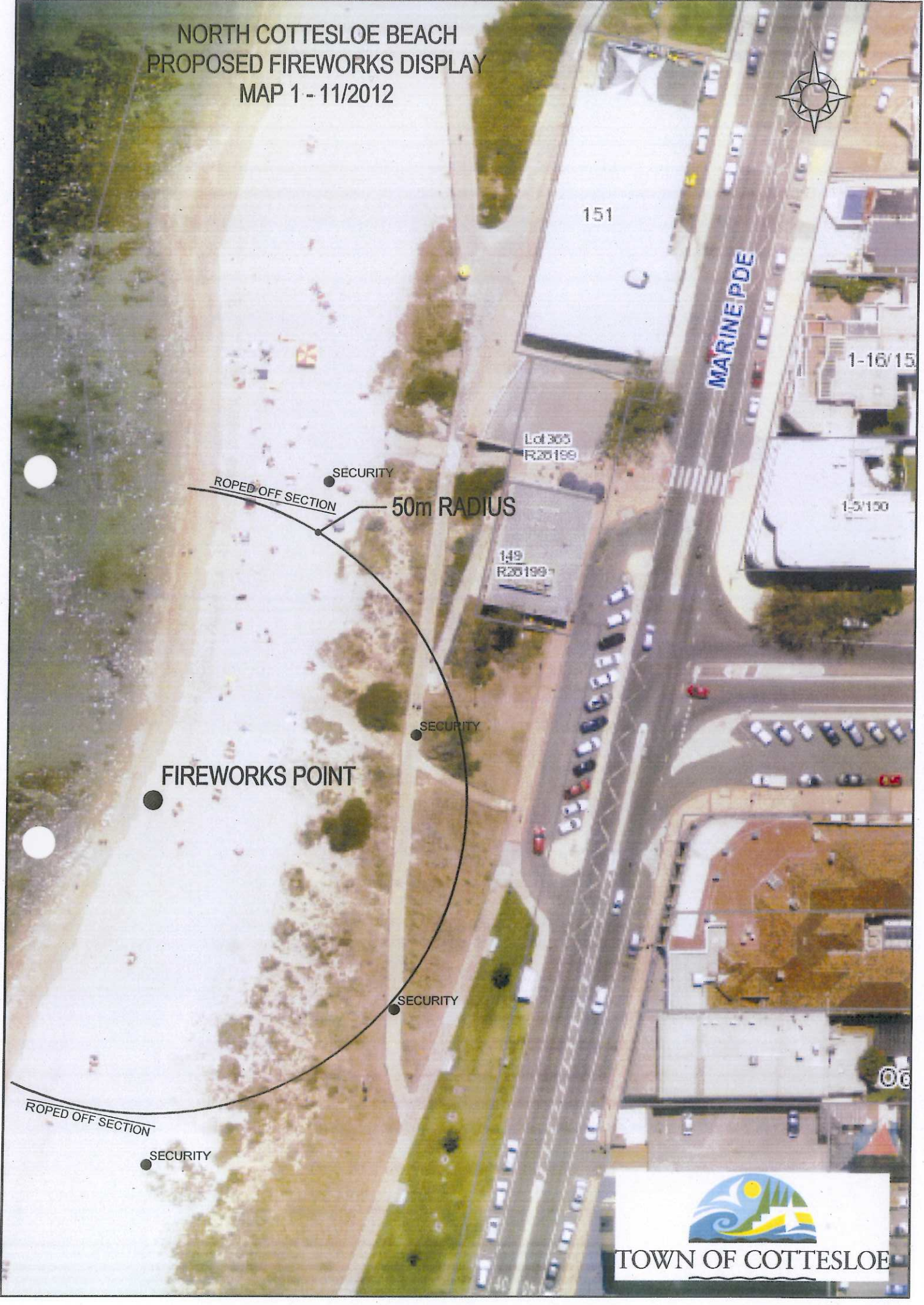
NORTH COTTESLOE BEACH
PROPOSED FIREWORKS DISPLAY
MAP 1 - 11/2012



ROPED OFF SECTION
SECURITY
50m RADIUS

FIREWORKS POINT

ROPED OFF SECTION
SECURITY





500m RADIUS

200m RADIUS

FIREWORKS LOCATION

NORTH COTTESLOE BEACH
PROPOSED FIREWORKS MAP 2



TOWN OF COTTESLOE



