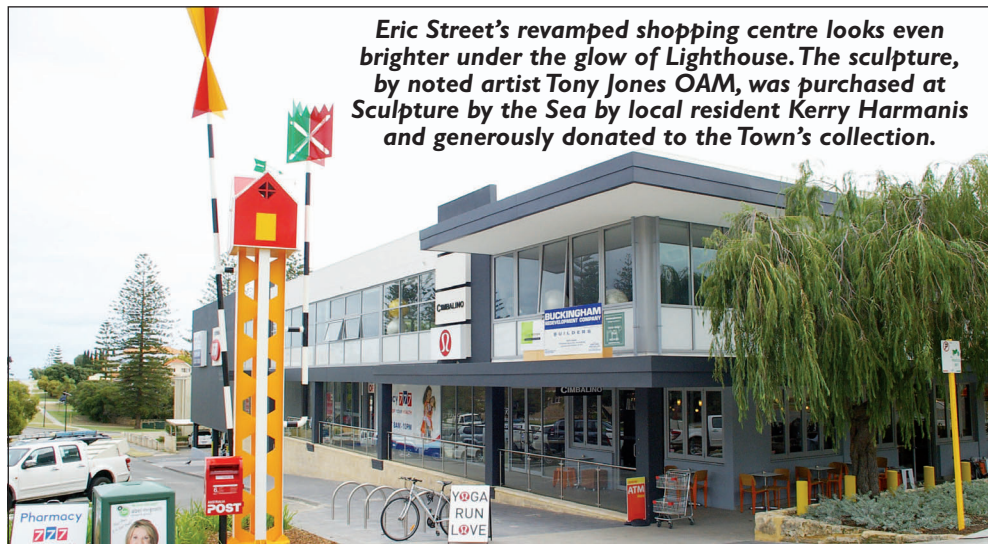


April 14
2012



COTTESLOE COUNCIL NEWS

Email: council@cottesloe.wa.gov.au
Website: cottesloe.wa.gov.au
Telephone: 9285 5000 Facsimile: 9285 5001



Eric Street's revamped shopping centre looks even brighter under the glow of Lighthouse. The sculpture, by noted artist Tony Jones OAM, was purchased at Sculpture by the Sea by local resident Kerry Harmanis and generously donated to the Town's collection.

New Local Laws – comments please

RESIDENTS are invited to comment on two important Cottesloe Local Laws.

First is the updated Beaches and Beach Reserves Local Law, for which submissions must be made by April 20.

Next is the Council's

Standing Orders Local Law, which has been reviewed. At the March meeting the Council set a date of May 14 for closure of submissions.

Details of both laws can be found on the Town website, together with background information as presented to the Council meetings.

News in brief...

Winter will be brighter!

MANY musicians have answered the call to entertain at the Civic Centre this winter.

The MUSIC for PLEASURE concerts are arranged for every Sunday afternoon in July and August. Modest entry fees include afternoon teas and the audience can anticipate a wide range of music and song of all kinds. A full programme will be announced soon.

Whalebone

UP to 300 board riders are expected for this annual event at Isolators Reef, Cottesloe on the July 14/15 weekend. This will be the 15th staging of the professional longboard surfing competition. Profits will be donated to Surf Aid International and other charities.

Meetings at Civic Centre

THE next full Council meeting is on Monday April 23, at 7pm.

Development Services Committee – Monday April 16, 6pm.

Works and Corporate Services Committee – Tuesday April 17, 7pm.

Planning applications for June – by May 7.

Lighting up Harvey Field

IMPROVED lighting from four new towers, which would partly double as mobile phone transmitters, could brighten training sessions at Harvey Field. Nine existing small light towers are in poor condition, and the Council has agreed in principle to a replacement request from the Cottesloe Rugby Club. Lighting is used by the rugby players, and the Junior Football Club, only for evening training sessions.

Public consultation

The rugby club must now consult with local residents and seek their comments on the proposal, which would involve installation of four towers, each 24 metres high. They would be paid for by commercial telecommunications companies and one or more of the towers would also carry mobile phone signals.

Elements to consider in the public consultation include effect on residents' outlook around the field, and questions on potential effects of electro-magnetic energy.

ANZAC Day

THE RSL WA Cottesloe Sub-Branch ANZAC Day Service to remember those Australians who served and those who lost their lives at war will be held on Wednesday, 25 April 2012, commencing at 6.45am at the Cottesloe Civic Centre and War Memorial Town Hall. All are welcome to attend and should gather at the South Gate (opposite Loma Street), Cottesloe Civic Centre, 109 Broome Street, Cottesloe no later than 6.45am. Light refreshments will be served after the service.



One suggestion made at the Council suggests that the towers should be placed so as to be masked by existing Norfolk Island pines.

Councillors were told that the present lighting is old, does not meet modern

standards and is beginning to rust and fail structurally. Replacement as outlined in the proposal would be cost-free to the Town. Improved mobile phone coverage in the area would be an added benefit.

Native plants for you

IF you're a Cottesloe resident you can help conserve the region's natural environment and buy native plants for just \$1.50 apiece.

The Region's annual Native Plants Subsidy scheme begins again on April 30. Between then and May 26, visit the not-for-profit APACE nursery in Fremantle and you can buy up to 80 native plants at this special price.

Make sure you have proof of residency with you and

you can take full advantage of the subsidy scheme. For every plant you buy, the Town contributes \$1.50 to the APACE organisation to support its conservation work.

The nursery is at 1, Johannah St, North Fremantle, open 8.30am/4pm, Monday to Friday and 9am/noon Saturdays.

Building height limits could go

CHANGES to WA's planning policy could remove the setting of building height limits. Cottesloe is opposing the move, contained in a new, draft, State Planning Policy 2.6 – which deals specifically with coastal policy and planning.

The public has until **May 21 to contact the WA Planning Commission (WAPC) with comments and concerns.**

Local planning

The draft Coastal Planning Policy and Guidelines would replace the current SPP 2.6, introduced in 2003 – and amended in 2006, when height controls were added.

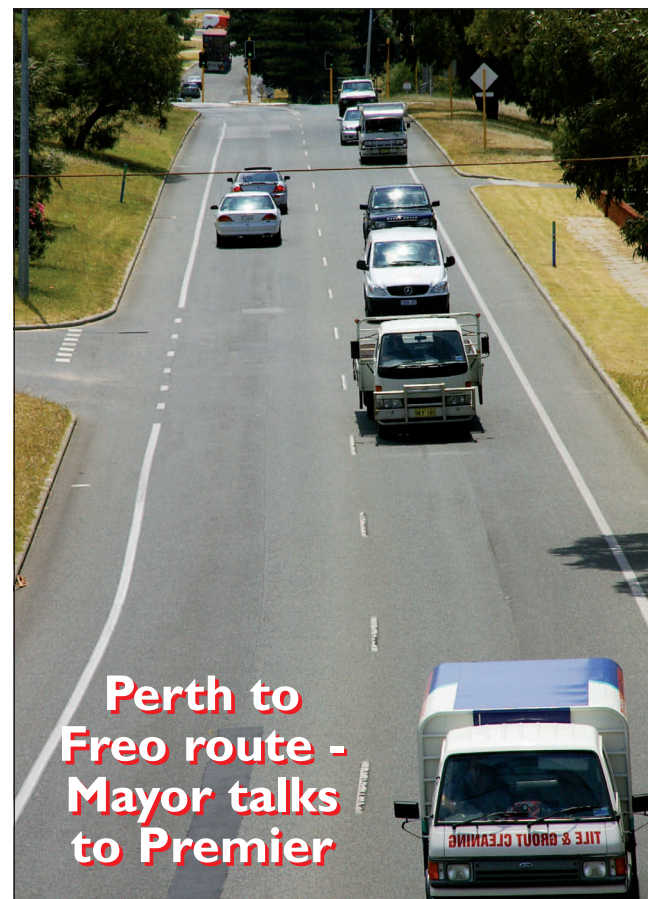
Cottesloe has told the WAPC that its criteria for building height limits are too subjective, and open to interpretation.

Elected councils' ability to set height limits suitable for a particular area (within their local planning schemes, like Cottesloe's LPS3) should be made clear

in the State's policy.

The Council also requested the WAPC acknowledges that the maximum building heights proposed in LPS3 do 'respond appropriately to the Cottesloe context of the

desired character, built form and amenity of the locality, having been devised via a dedicated Enquiry-by-Design process and extensive advertising of the Building Design controls.'



Perth to Freo route - Mayor talks to Premier

IN wide-ranging talks about the Cottesloe area, Mayor Kevin Morgan discussed with Premier Colin Barnett a WESROC concept for a new regional transit route from Perth to Fremantle.

At the Mayor's suggestion, WESROC (Western Suburbs Regional Organisation of Councils) is studying an alternative to widening Stirling Highway, by use of the railway reserve.

"There is an opportunity to strategically plan key transit routes between Perth and Fremantle for the next

100 years," the Mayor said.

He asked Mr Barnett to have the State Government consider whether local developments at Claremont's north-east precinct, and at the Beehive Montessori School would leave enough space for a possible future transit corridor along the railway reserve.

Grove Library for learning

AS well as enhancing community well-being, helping children and young people develop reading skills is integral to the mission of the Grove Library. Preserving the community memory of Cottesloe, Peppermint Grove and Mosman Park is also an important part of its 'learning' goal.

The new mission statement of the library's aims and intentions has been presented to the three councils for endorsement.

It says that the Grove Library and Learning Centre aims to contribute to the strategic goals of the the partner councils. A majority of the local community know what is offered and make use of the Grove, which indicates the value of the investment made by the local councils.

