

Weekly Vehicle Counts (Virtual Week)

VirtWeeklyVehicle-34

Site: 0169.ONS
Description: CURTIN AVENUE SOUTH OF FORREST STREET
Filter time: 10:00 Tuesday, March 06, 2012 => 14:43 Sunday, March 11, 2012
Scheme: Vehicle classification (ARX)
Filter: Cls(1 2 3 4 5 6 7 8 9 10 11 12) Dir(NESW) Sp(10,160) Headway(>0)

Hour	Mon	Tue	Wed	Thu	Fri	Sat	Sun	Averages	
								1 - 5	1 - 7
0000-0100	*	*	38.0	56.0	76.0	172.0	215.0	56.7	111.4
0100-0200	*	*	30.0	25.0	32.0	72.0	103.0	29.0	52.4
0200-0300	*	*	31.0	20.0	34.0	45.0	53.0	28.3	36.6
0300-0400	*	*	24.0	19.0	31.0	35.0	47.0	24.7	31.2
0400-0500	*	*	55.0	57.0	70.0	45.0	52.0	60.7	55.8
0500-0600	*	*	313.0	359.0	335.0	200.0	143.0	335.7	270.0
0600-0700	*	*	1212.0	1072.0	951.0	557.0	439.0	1078.3	846.2
0700-0800	*	*	1986.0<	1928.0	1378.0	837.0	778.0	1764.0	1381.4
0800-0900	*	*	1962.0	1941.0<	1795.0<	1053.0	905.0	1899.3<	1531.2<
0900-1000	*	*	1350.0	1332.0	1333.0	1255.0	1245.0	1338.3	1303.0
1000-1100	*	948.0	1057.0	1012.0	1073.0	1315.0	1352.0	1022.5	1126.2
1100-1200	*	938.0	1009.0	977.0	1181.0	1362.0<	1428.0<	1026.3	1149.2
1200-1300	*	60.0	1115.0	1145.0	1205.0	1439.0<	1406.0	881.3	1061.7
1300-1400	*	265.0	1050.0	992.0	1191.0	1342.0	1248.0	874.5	1014.7
1400-1500	*	1186.0	1122.0	1206.0	1395.0	1317.0	913.0	1227.3	1189.8
1500-1600	*	1643.0	1773.0	1772.0	1860.0	1270.0	*	1762.0	1663.6
1600-1700	*	1776.0	1995.0	1968.0	2074.0<	1199.0	*	1953.3	1802.4
1700-1800	*	2147.0<	2149.0<	2104.0<	2037.0	1433.0	*	2109.3<	1974.0<
1800-1900	*	1389.0	1373.0	1441.0	1474.0	1151.0	*	1419.3	1365.6
1900-2000	*	747.0	712.0	796.0	848.0	905.0	*	775.8	801.6
2000-2100	*	490.0	497.0	452.0	523.0	535.0	*	490.5	499.4
2100-2200	*	342.0	380.0	426.0	540.0	421.0	*	422.0	421.8
2200-2300	*	260.0	253.0	276.0	469.0	408.0	*	314.5	333.2
2300-2400	*	98.0	123.0	126.0	287.0	342.0	*	158.5	195.2
Totals									
0700-1900	*	*	17941.0	17818.0	17996.0	14973.0	*	17277.2	16562.7
0600-2200	*	*	20742.0	20564.0	20858.0	17391.0	*	20043.8	19131.7
0600-0000	*	*	21118.0	20966.0	21614.0	18141.0	*	20516.8	19660.1
0000-0000	*	*	21609.0	21502.0	22192.0	18710.0	*	21051.8	20217.5
AM Peak	*	*	0700	0800	0800	1100	1100		
	*	*	1986.0	1941.0	1795.0	1362.0	1428.0		
PM Peak	*	1700	1700	1700	1600	1200	*		
	*	2147.0	2149.0	2104.0	2074.0	1439.0	*		

* - No data.



A1212994W Pedestrian Survey Report

19th March 2012

Mr Geoff Trigg
Manager Engineering Services
Town of Cottesloe
PO Box 606
Cottesloe WA 6911
Tel: 08 9285 5050
Email: mes@cottesloe.wa.gov.au

Dear Mr Trigg,

24-Hour Video Survey of Pedestrian Movements – Intersection of Curtin Avenue and Forrest Street, Cottesloe

Non-motorised crossing movements (majority pedestrians and minority cyclists) were recorded between 0000hrs and 2359hrs on Thursday, 8th March 2012 at 2 pedestrian crossings:

- Crossing with refuge islands located on Curtin Avenue, immediately north of Forrest Street.
- Crossing with refuge islands located on Curtin Avenue, immediately south of Forrest Street.

The findings of the survey are as follows:

- Maximum 3-hour non-motorised 2-way crossing movements are:
 - 281 people comprising 275 pedestrians and 6 cyclists used the crossing located immediately south of Forrest Street between 3.30pm and 6.30pm.
 - 82 people comprising 69 pedestrians and 13 cyclists used the crossing located immediately north of Forrest Street between 2.30pm and 5.30pm.

Our view is that the combined demands for the two closely located crossings should be considered by Main Roads in their assessment of signalised pedestrian crossing warrants. A total of 358 people comprising 346 pedestrians and 12 cycles used both crossings in the vicinity of Forrest Street between 3.30pm and 6.30pm.

See Tables 1, 2 and 3.

IBM Building, Level 3, 1060 Hay Street, West Perth WA 6005

Telephone: 08 6467 7558
perth@mltraffic.com.au

Facsimile: 1300 739 523
www.mltraffic.com.au

ML Traffic Engineers Pty Ltd
ABN 69 148 048 257

Thursday, 8th March 2012	Crossing to the North of Forrest Street				Running 3 Hour Volumes	
	Pedestrians		Bicycles		Period	Totals
	Eastbound	Westbound	Eastbound	Westbound		
0000hrs to 0030hrs	0	0	0	0	2130hrs to 0030hrs	10
0030hrs to 0100hrs	0	0	0	0	2200hrs to 0100hrs	10
0100hrs to 0130hrs	0	0	0	0	2230hrs to 0130hrs	1
0130hrs to 0200hrs	0	0	0	0	2300hrs to 0200hrs	0
0200hrs to 0230hrs	0	0	0	0	2330hrs to 0230hrs	0
0230hrs to 0300hrs	0	0	0	0	0000hrs to 0300hrs	0
0300hrs to 0330hrs	0	0	0	0	0030hrs to 0330hrs	0
0330hrs to 0400hrs	0	0	0	0	0100hrs to 0400hrs	0
0400hrs to 0430hrs	0	0	0	0	0130hrs to 0430hrs	0
0430hrs to 0500hrs	0	0	0	0	0200hrs to 0500hrs	0
0500hrs to 0530hrs	0	0	0	0	0230hrs to 0530hrs	0
0530hrs to 0600hrs	0	0	0	0	0300hrs to 0600hrs	0
0600hrs to 0630hrs	0	0	0	0	0330hrs to 0630hrs	0
0630hrs to 0700hrs	3	0	0	0	0400hrs to 0700hrs	3
0700hrs to 0730hrs	4	0	1	0	0430hrs to 0730hrs	8
0730hrs to 0800hrs	9	1	0	0	0500hrs to 0800hrs	18
0800hrs to 0830hrs	12	1	3	0	0530hrs to 0830hrs	34
0830hrs to 0900hrs	3	1	1	0	0600hrs to 0900hrs	39
0900hrs to 0930hrs	3	3	2	1	0630hrs to 0930hrs	48
0930hrs to 1000hrs	6	17	0	0	0700hrs to 1000hrs	68
1000hrs to 1030hrs	0	0	0	0	0730hrs to 1030hrs	63
1030hrs to 1100hrs	3	1	2	1	0800hrs to 1100hrs	60
1100hrs to 1130hrs	2	3	2	0	0830hrs to 1130hrs	51
1130hrs to 1200hrs	0	0	1	0	0900hrs to 1200hrs	47
1200hrs to 1230hrs	1	0	0	0	0930hrs to 1230hrs	39
1230hrs to 1300hrs	4	2	0	0	1000hrs to 1300hrs	22
1300hrs to 1330hrs	2	3	1	0	1030hrs to 1330hrs	28
1330hrs to 1400hrs	1	0	0	0	1100hrs to 1400hrs	22
1400hrs to 1430hrs	1	0	0	1	1130hrs to 1430hrs	17
1430hrs to 1500hrs	5	2	1	4	1200hrs to 1500hrs	28
1500hrs to 1530hrs	3	7	3	3	1230hrs to 1530hrs	43
1530hrs to 1600hrs	2	19	0	1	1300hrs to 1600hrs	59
1600hrs to 1630hrs	3	6	0	0	1330hrs to 1630hrs	62
1630hrs to 1700hrs	5	6	0	0	1400hrs to 1700hrs	72
1700hrs to 1730hrs	6	5	1	0	1430hrs to 1730hrs	82
1730hrs to 1800hrs	2	7	0	0	1500hrs to 1800hrs	79
1800hrs to 1830hrs	6	4	3	1	1530hrs to 1830hrs	77
1830hrs to 1900hrs	0	2	1	2	1600hrs to 1900hrs	60
1900hrs to 1930hrs	11	4	0	2	1630hrs to 1930hrs	68
1930hrs to 2000hrs	1	3	0	0	1700hrs to 2000hrs	61
2000hrs to 2030hrs	3	2	0	1	1730hrs to 2030hrs	55
2030hrs to 2100hrs	0	5	0	0	1800hrs to 2100hrs	51
2100hrs to 2130hrs	1	5	0	0	1830hrs to 2130hrs	43
2130hrs to 2200hrs	0	0	0	0	1900hrs to 2200hrs	38
2200hrs to 2230hrs	1	1	1	0	1930hrs to 2230hrs	24
2230hrs to 2300hrs	0	2	0	0	2000hrs to 2300hrs	22
2300hrs to 2330hrs	1	1	0	0	2030hrs to 2330hrs	18
2330hrs to 0000hrs	0	1	0	0	2100hrs to 0000hrs	14

Table 1: 24-Hour Non-Motorised Movements – Crossing on Curtin Avenue located North of Forrest Street

Thursday, 8th March 2012	Crossing to the South of Forrest Street				Running 3 Hour Volumes	
	Pedestrians		Bicycles		Period	Totals
	Eastbound	Westbound	Eastbound	Westbound		
0000hrs to 0030hrs	0	0	0	0	2130hrs to 0030hrs	10
0030hrs to 0100hrs	0	0	0	0	2200hrs to 0100hrs	10
0100hrs to 0130hrs	0	0	0	0	2230hrs to 0130hrs	1
0130hrs to 0200hrs	0	0	0	0	2300hrs to 0200hrs	0
0200hrs to 0230hrs	0	0	0	0	2330hrs to 0230hrs	0
0230hrs to 0300hrs	0	0	0	0	0000hrs to 0300hrs	0
0300hrs to 0330hrs	0	0	0	0	0030hrs to 0330hrs	0
0330hrs to 0400hrs	0	0	0	0	0100hrs to 0400hrs	0
0400hrs to 0430hrs	0	0	0	0	0130hrs to 0430hrs	0
0430hrs to 0500hrs	0	0	0	0	0200hrs to 0500hrs	0
0500hrs to 0530hrs	0	0	0	0	0230hrs to 0530hrs	0
0530hrs to 0600hrs	0	0	0	0	0300hrs to 0600hrs	0
0600hrs to 0630hrs	0	0	0	0	0330hrs to 0630hrs	0
0630hrs to 0700hrs	3	1	1	0	0400hrs to 0700hrs	5
0700hrs to 0730hrs	3	1	0	0	0430hrs to 0730hrs	9
0730hrs to 0800hrs	12	6	0	1	0500hrs to 0800hrs	28
0800hrs to 0830hrs	4	9	1	1	0530hrs to 0830hrs	43
0830hrs to 0900hrs	9	5	3	0	0600hrs to 0900hrs	60
0900hrs to 0930hrs	3	4	0	0	0630hrs to 0930hrs	67
0930hrs to 1000hrs	2	7	0	2	0700hrs to 1000hrs	73
1000hrs to 1030hrs	6	14	0	0	0730hrs to 1030hrs	89
1030hrs to 1100hrs	12	15	0	1	0800hrs to 1100hrs	98
1100hrs to 1130hrs	3	13	0	1	0830hrs to 1130hrs	100
1130hrs to 1200hrs	19	27	0	0	0900hrs to 1200hrs	129
1200hrs to 1230hrs	6	15	1	0	0930hrs to 1230hrs	144
1230hrs to 1300hrs	5	10	0	3	1000hrs to 1300hrs	151
1300hrs to 1330hrs	8	16	0	0	1030hrs to 1330hrs	155
1330hrs to 1400hrs	11	7	0	0	1100hrs to 1400hrs	145
1400hrs to 1430hrs	21	19	2	1	1130hrs to 1430hrs	171
1430hrs to 1500hrs	18	19	1	0	1200hrs to 1500hrs	163
1500hrs to 1530hrs	17	21	5	0	1230hrs to 1530hrs	184
1530hrs to 1600hrs	22	21	2	1	1300hrs to 1600hrs	212
1600hrs to 1630hrs	29	6	0	1	1330hrs to 1630hrs	224
1630hrs to 1700hrs	25	18	0	1	1400hrs to 1700hrs	250
1700hrs to 1730hrs	25	33	0	0	1430hrs to 1730hrs	265
1730hrs to 1800hrs	26	24	0	0	1500hrs to 1800hrs	277
1800hrs to 1830hrs	29	17	0	1	1530hrs to 1830hrs	281
1830hrs to 1900hrs	15	4	0	0	1600hrs to 1900hrs	254
1900hrs to 1930hrs	34	3	0	2	1630hrs to 1930hrs	257
1930hrs to 2000hrs	8	13	0	0	1700hrs to 2000hrs	234
2000hrs to 2030hrs	7	3	0	1	1730hrs to 2030hrs	187
2030hrs to 2100hrs	2	2	0	0	1800hrs to 2100hrs	141
2100hrs to 2130hrs	7	4	0	0	1830hrs to 2130hrs	105
2130hrs to 2200hrs	0	0	0	0	1900hrs to 2200hrs	86
2200hrs to 2230hrs	9	0	0	0	1930hrs to 2230hrs	56
2230hrs to 2300hrs	1	0	0	0	2000hrs to 2300hrs	36
2300hrs to 2330hrs	0	0	0	0	2030hrs to 2330hrs	25
2330hrs to 0000hrs	0	0	0	0	2100hrs to 0000hrs	21

Table 2: 24-Hour Non-Motorised Movements – Crossing on Curtin Avenue located South of Forrest Street

Thursday, 8th March 2012	Crossings - North and South Sides of Forrest Street				Running 3 Hour Volumes	
	Pedestrians		Bicycles		Period	Totals
	Eastbound	Westbound	Eastbound	Westbound		
0000hrs to 0030hrs	0	0	0	0	2130hrs to 0030hrs	10
0030hrs to 0100hrs	0	0	0	0	2200hrs to 0100hrs	10
0100hrs to 0130hrs	0	0	0	0	2230hrs to 0130hrs	1
0130hrs to 0200hrs	0	0	0	0	2300hrs to 0200hrs	0
0200hrs to 0230hrs	0	0	0	0	2330hrs to 0230hrs	0
0230hrs to 0300hrs	0	0	0	0	0000hrs to 0300hrs	0
0300hrs to 0330hrs	0	0	0	0	0030hrs to 0330hrs	0
0330hrs to 0400hrs	0	0	0	0	0100hrs to 0400hrs	0
0400hrs to 0430hrs	0	0	0	0	0130hrs to 0430hrs	0
0430hrs to 0500hrs	0	0	0	0	0200hrs to 0500hrs	0
0500hrs to 0530hrs	0	0	0	0	0230hrs to 0530hrs	0
0530hrs to 0600hrs	0	0	0	0	0300hrs to 0600hrs	0
0600hrs to 0630hrs	0	0	0	0	0330hrs to 0630hrs	0
0630hrs to 0700hrs	6	1	1	0	0400hrs to 0700hrs	8
0700hrs to 0730hrs	7	1	1	0	0430hrs to 0730hrs	17
0730hrs to 0800hrs	21	7	0	1	0500hrs to 0800hrs	46
0800hrs to 0830hrs	16	10	4	1	0530hrs to 0830hrs	77
0830hrs to 0900hrs	12	6	4	0	0600hrs to 0900hrs	99
0900hrs to 0930hrs	6	7	2	1	0630hrs to 0930hrs	115
0930hrs to 1000hrs	8	24	0	2	0700hrs to 1000hrs	141
1000hrs to 1030hrs	6	14	0	0	0730hrs to 1030hrs	152
1030hrs to 1100hrs	15	16	2	2	0800hrs to 1100hrs	158
1100hrs to 1130hrs	5	16	2	1	0830hrs to 1130hrs	151
1130hrs to 1200hrs	19	27	1	0	0900hrs to 1200hrs	176
1200hrs to 1230hrs	7	15	1	0	0930hrs to 1230hrs	183
1230hrs to 1300hrs	9	12	0	3	1000hrs to 1300hrs	173
1300hrs to 1330hrs	10	19	1	0	1030hrs to 1330hrs	183
1330hrs to 1400hrs	12	7	0	0	1100hrs to 1400hrs	167
1400hrs to 1430hrs	22	19	2	2	1130hrs to 1430hrs	188
1430hrs to 1500hrs	23	21	2	4	1200hrs to 1500hrs	191
1500hrs to 1530hrs	20	28	8	3	1230hrs to 1530hrs	227
1530hrs to 1600hrs	24	40	2	2	1300hrs to 1600hrs	271
1600hrs to 1630hrs	32	12	0	1	1330hrs to 1630hrs	286
1630hrs to 1700hrs	30	24	0	1	1400hrs to 1700hrs	322
1700hrs to 1730hrs	31	38	1	0	1430hrs to 1730hrs	347
1730hrs to 1800hrs	28	31	0	0	1500hrs to 1800hrs	356
1800hrs to 1830hrs	35	21	3	2	1530hrs to 1830hrs	358
1830hrs to 1900hrs	15	6	1	2	1600hrs to 1900hrs	314
1900hrs to 1930hrs	45	7	0	4	1630hrs to 1930hrs	325
1930hrs to 2000hrs	9	16	0	0	1700hrs to 2000hrs	295
2000hrs to 2030hrs	10	5	0	2	1730hrs to 2030hrs	242
2030hrs to 2100hrs	2	7	0	0	1800hrs to 2100hrs	192
2100hrs to 2130hrs	8	9	0	0	1830hrs to 2130hrs	148
2130hrs to 2200hrs	0	0	0	0	1900hrs to 2200hrs	124
2200hrs to 2230hrs	10	1	1	0	1930hrs to 2230hrs	80
2230hrs to 2300hrs	1	2	0	0	2000hrs to 2300hrs	58
2300hrs to 2330hrs	1	1	0	0	2030hrs to 2330hrs	43
2330hrs to 0000hrs	0	1	0	0	2100hrs to 0000hrs	35

Table 3: 24-Hour Non-Motorised Movements – Crossings (Two) on Curtin Avenue located on Both Sides of Forrest Street

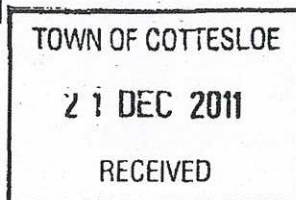


If you have any questions, please do not hesitate to contact me on 08 6467 7558.

Yours sincerely,

A handwritten signature in blue ink, appearing to read 'ML' with a stylized flourish.

Michael Lee, BEng (Monash, 1989)
Principal



ABN: 50 860 676 021

Enquiries: Gani Pablo on 9323 4630
Our Ref: 03/7974 (D11#310483)
Your Ref: SUB/610

16 December 2011

Mr G Trigg
Town of Cottesloe
PO Box 606
COTTESLOE WA 6911

Dear Geoff

REQUEST FOR PEDESTRIAN TRAFFIC SIGNALS – CURTIN AVENUE AND FORREST STREET

I refer to your letter of 8 December requesting that consideration be given to the installation of pedestrian activated signals at the above location.

In order for Main Roads to consider providing Agreement in Principle to the installation of pedestrian activated signals at the intersection of Curtin Avenue and Forrest Street, Council is required to demonstrate that any of the following warrants exist.

- 1) For each of 3 hours on an average day:
 - pedestrian volume exceeds 350 persons per hour; and
 - traffic volumes of the road exceeds 600 vehicles/hr (total both directions) or 1000 vehicles/hr (total both directions) where there is a central pedestrian refuge.

- 2) For each of 8 hours on an average day:
 - pedestrian volume exceeds 175 persons per hour; and
 - traffic volumes of the road exceeds 600 vehicles/hr (total both directions) or 1000 vehicles/hr (total both directions) where there is a central pedestrian refuge; and
 - there is no zebra crossing, footbridge or underpass within a reasonable distance.

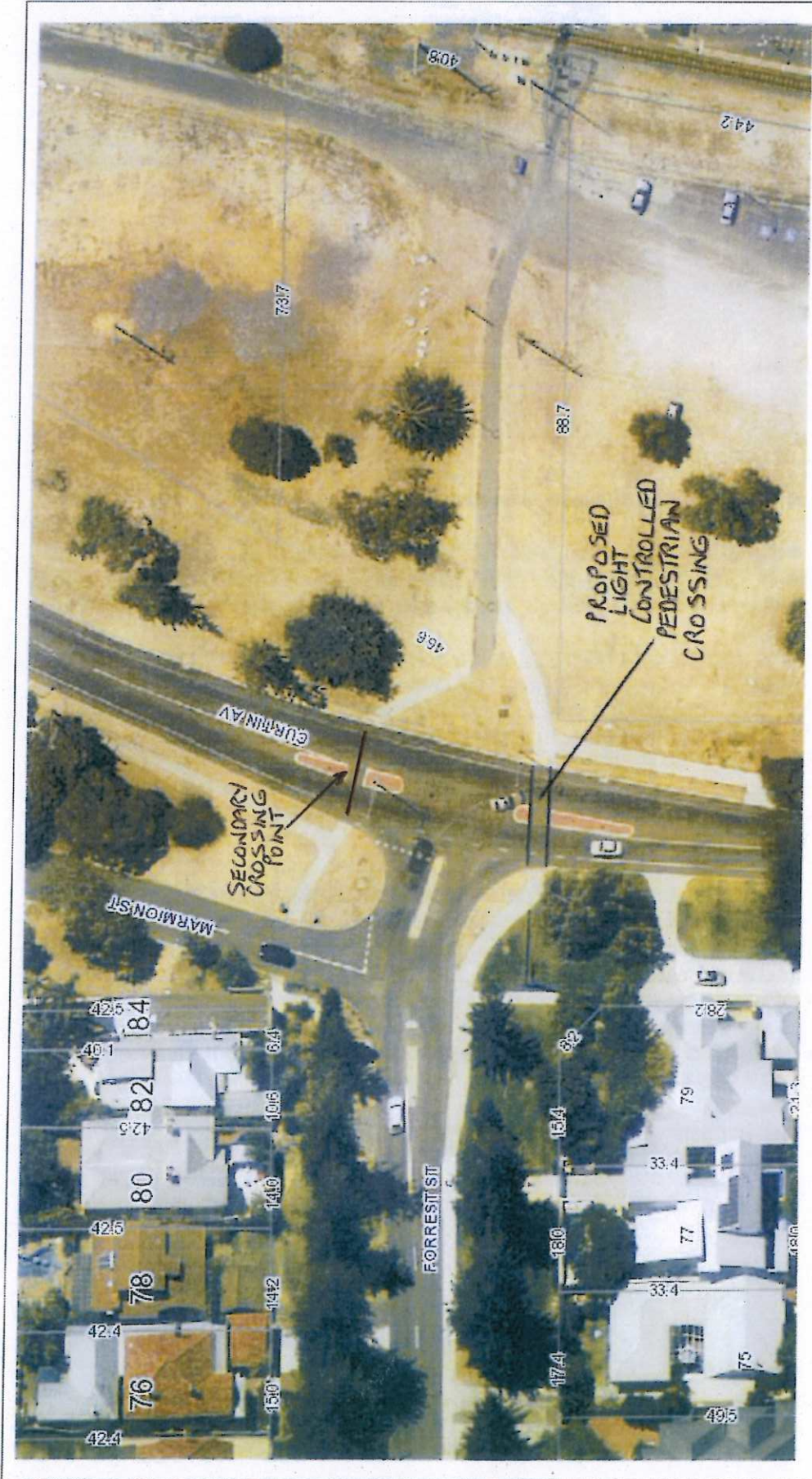
Main Roads suggests that a 24 hour video survey (number of pedestrian volumes per 15min) be undertaken.

I trust this is satisfactory however should you wish to discuss this matter further please contact Mr Gani Pablo on 9323 4630. In reply please quote file reference 03/7974 (D11#310483).

Yours sincerely



Jerko Ostoic
TRAFFIC SERVICES CO-ORDINATOR NORTH WEST



Scale 1:805

Thursday, 8 December 2011

The Town of Cottesloe does not warrant the accuracy of information in this publication and any person using or relying upon such information does so on the basis that the Town of Cottesloe shall bear no responsibility or liability whatsoever for any errors, faults, defects or omissions in the information.

PROPOSED PEDESTRIAN CROSSING LIGHTS, CURTIN AVENUE, COTTESLOE

