



single storey
brick & tile
residence

fibro shed
brick & tiled shed

RAILWAY STREET

H_ENTRY

C_STAFF QUARTERS

J_CARPARK 2

D_OUTBUILDING 1

E_OUTBUILDING 2

B_WANSLEA

F_OUTBUILDING 3

I_CARPARK 1

G_ARMY

1 Lower Floor Site Plan, CWC Occupation

- Shared
- Tenancy
- Common
- DOE

REV	DATE	NOTE
3	120903	DA Amendment
2	120730	HDA, hydrant hoses
1	120704	NT, CWC review

ISSUE DATE NOTE

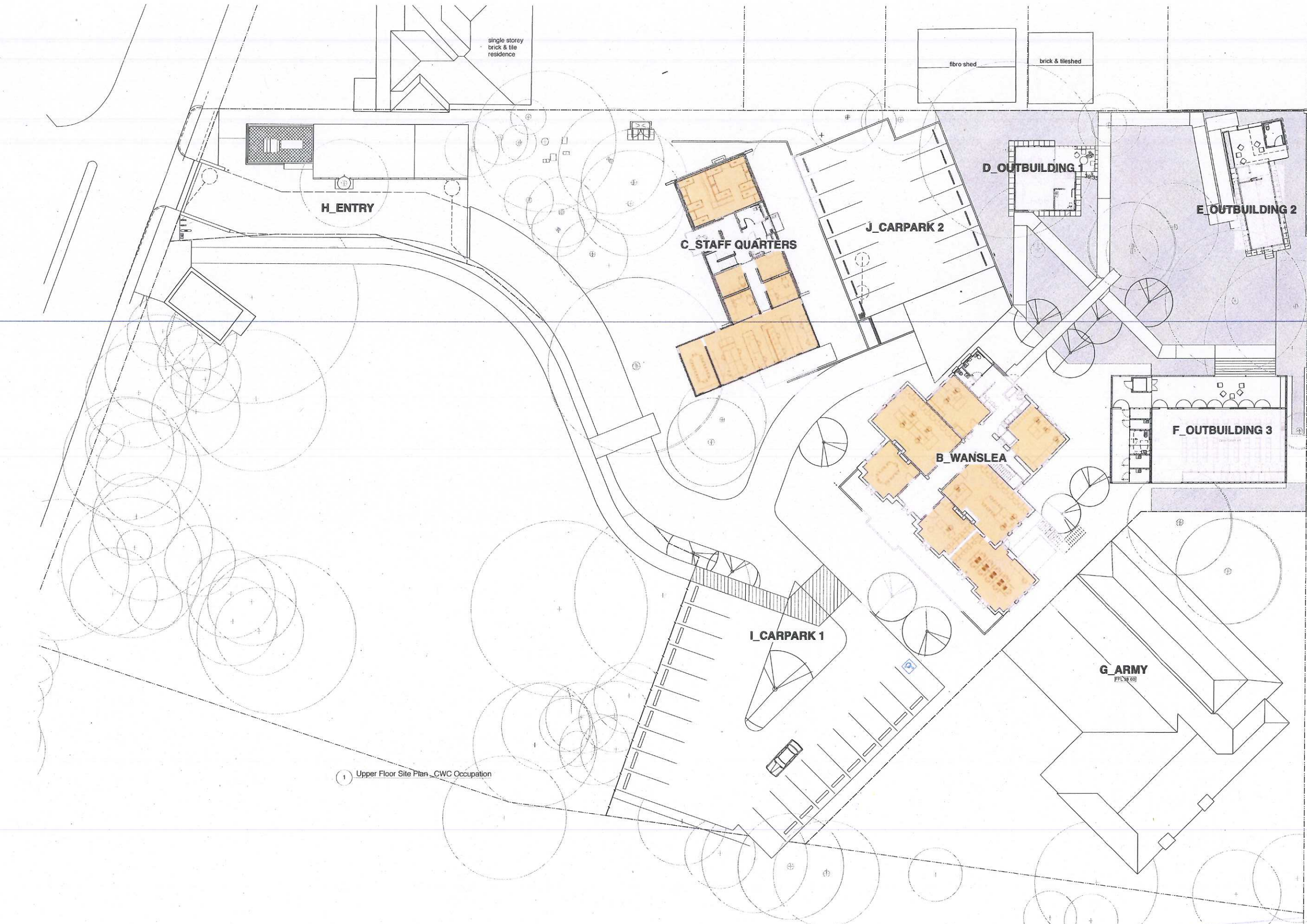
BERNARD SEEBER PTY LTD
ARCHITECTS REGISTRATION NUMBER 1195
WANSLEA WORKS

NATIONAL TRUST
NORTH POINT

DRAWING STATUS
Preliminary
CONTENT
CWC Occupation
Lower Floor Plans
SCALE
1:200 @ A1
NUMBER & NAME
399_WANSLEA WORKS
DRAWING
A_951

ISSUE REVISION
3

BERNARD SEEBER.COM



H_ENTRY

C_STAFF QUARTERS

J_CARPARK 2

D_OUTBUILDING 1

E_OUTBUILDING 2

B_WANSLEA

F_OUTBUILDING 3

I_CARPARK 1

G_ARMY

1 Upper Floor Site Plan - CWC Occupation

Shared
 Tenancy
 Common

REV	DATE	NOTE
3	120903	DA Amendment
2	120730	HDA Hydrant hoses
1	120704	NT, CWC review

ISSUE DATE NOTE
 BERNARD SEEBER PTY LTD
 ARCHITECTS REGISTRATION NUMBER 1195
WANSLEA WORKS

NATIONAL TRUST
 NORTH POINT

1
 DRAWING STATUS
 Preliminary
 CWO/ Occupation
 Upper Floor Plan

SCALE
 1:200 @ A1
 NUMBER & NAME
399_WANSLEA WORKS
 DRAWING ISSUE REVISION
A002 3

BERNARD SEEBER
 .COM

TOWN OF NORTH POINT
 18 SEP 2012
 RECEIVED



1 Roof Site Plan_CWC-Occupation

REV	DATE	NOTE
2	120903	DA Amendments
1	120704	NT, CWC review

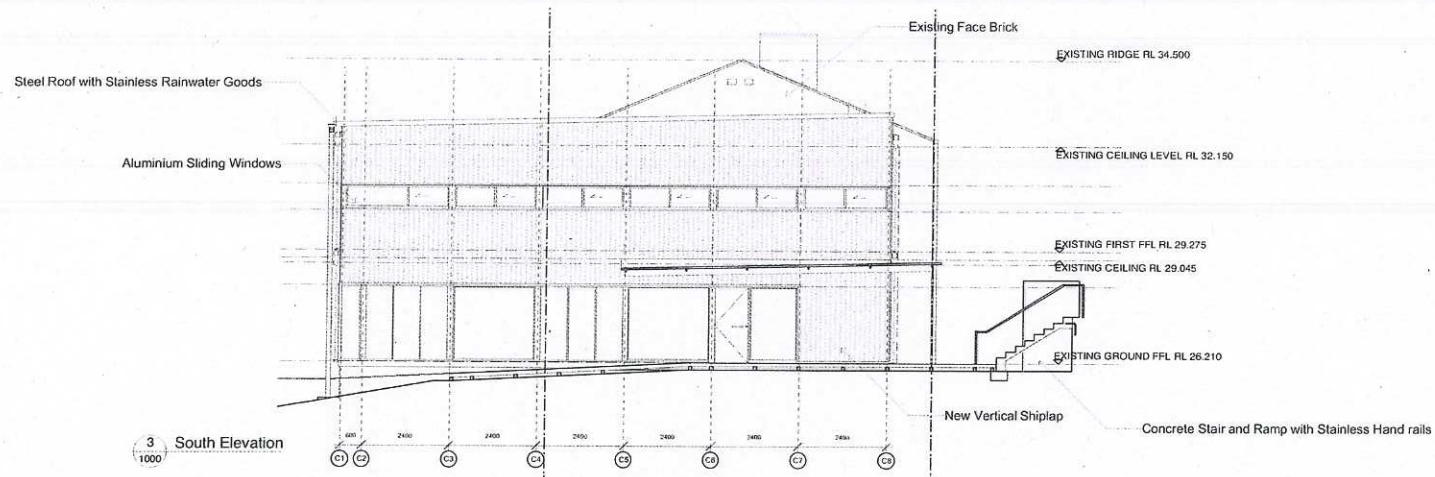
ISSUE DATE NOTE
 BERNARD SEEBER PTY LTD
 ARCHITECTS REGISTRATION NUMBER 1195
WANSLEA WORKS

NATIONAL TRUST
 NORTH POINT
 DRAWING STATUS
 Preliminary
 CWC@Occupation
 Roof Plan

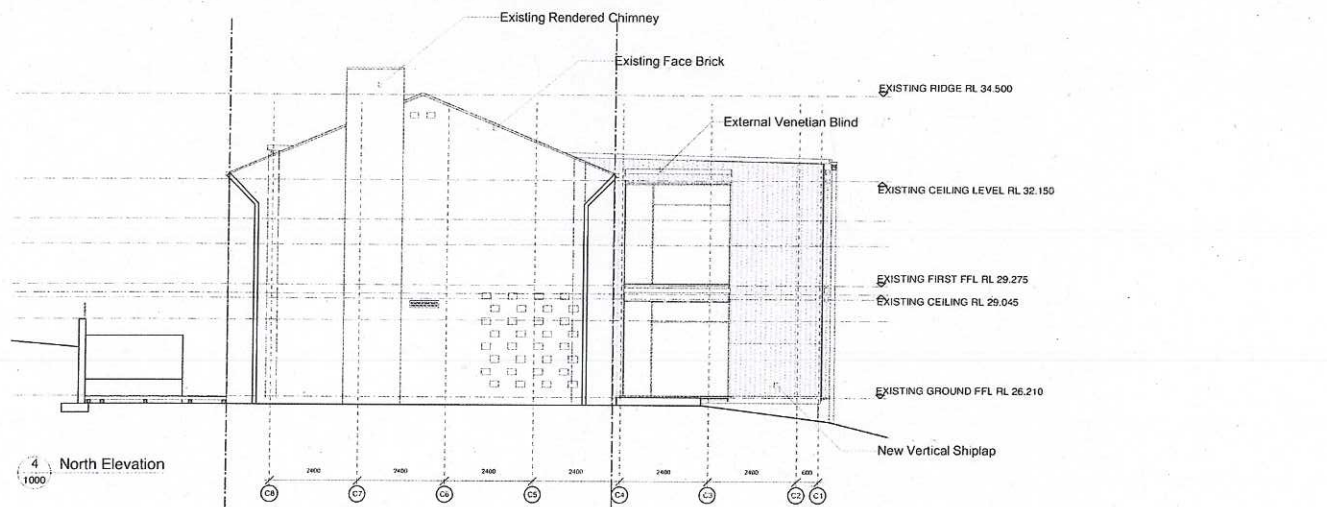
SCALE
 1:200 @ A1
 NUMBER & NAME
399_WANSLEA WORKS
 DRAWING ISSUE REVISION
 A953 2

BERNARD SEEBER.COM

TOWN OF COFFS HARBOUR
 18 SEP 2012
 RECEIVED



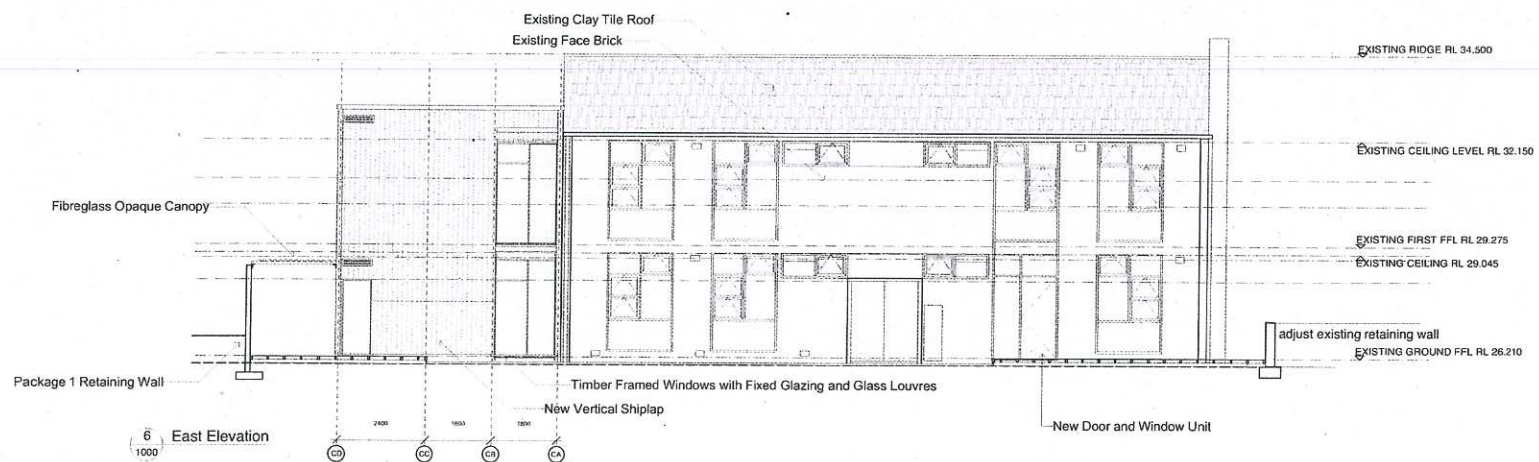
3 South Elevation
1000



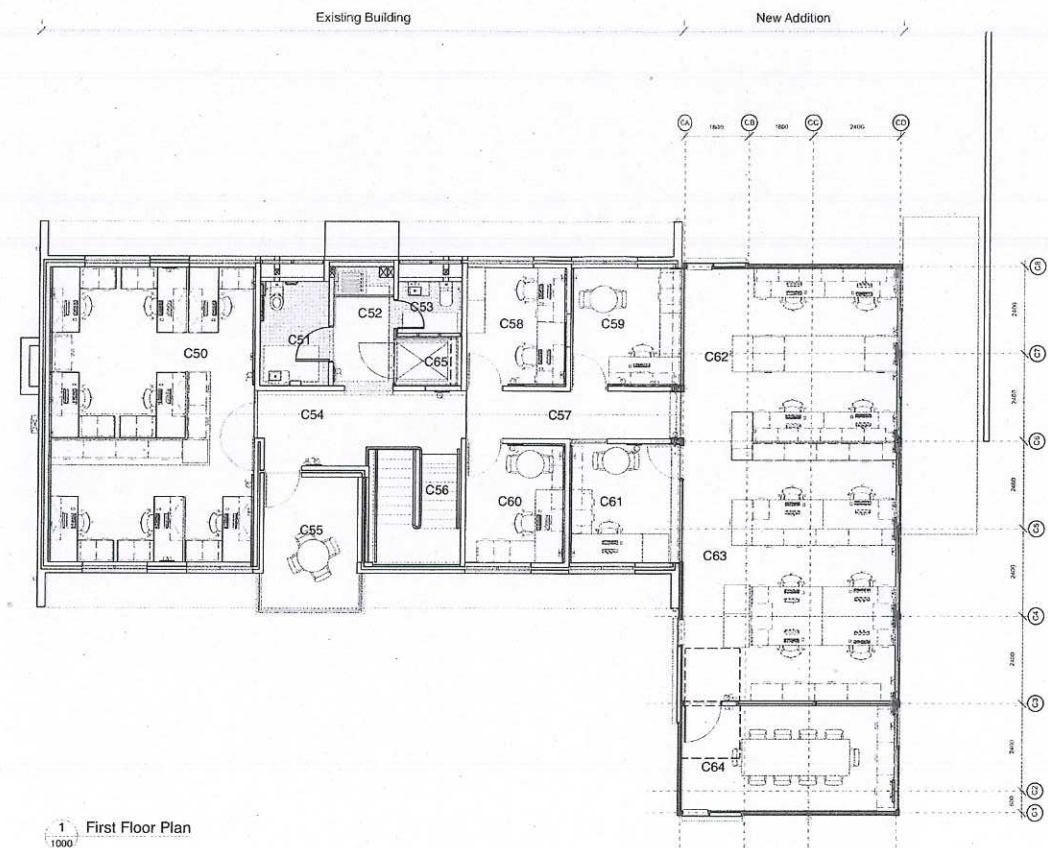
4 North Elevation
1000



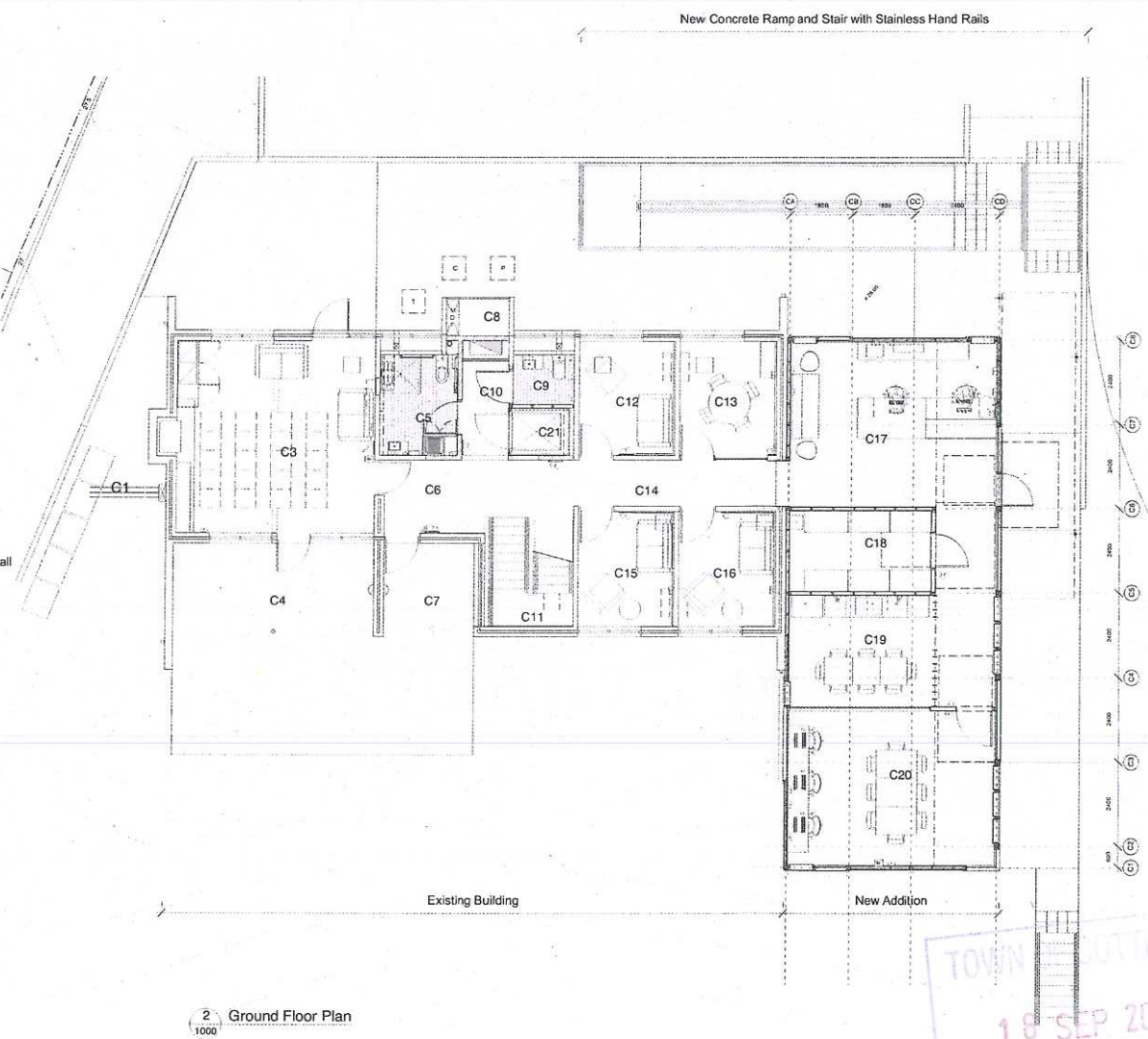
5 West Elevation
1000



6 East Elevation
1000



1 First Floor Plan
1000



2 Ground Floor Plan
1000

No.	Room Name
C1	North West Courtyard
C2	North East Courtyard
C3	Activities 1
C4	Verandah 1
C5	Universal Toilet & Shower
C6	Lobby 1
C7	Entry 1
C8	Services Room
C9	Unisex Toilet 1
C10	Store 1
C11	Stairs
C12	Counselling 1
C13	Meeting Room
C14	Corridor 1
C15	Counselling 2
C16	Counselling 3
C17	Reception
C18	Store
C19	Staff Room
C20	Volunteer Space
C21	Lift

No.	Room Name
C50	Office 4
C51	Universal Toilet
C52	Corridor
C53	Unisex Toilet
C54	Lobby
C55	Balcony
C56	Stairs
C57	Hall
C58	Office 5
C59	Office 6
C60	Office 7
C61	Office 8
C62	Office 9
C63	Office 10
C64	Meeting Room
C65	Lift

General Notes

REV DATE NOTE

A 120903 DA Amendments
ISSUE DATE NOTE

BERNARD SEEBER PTY LTD
ARCHITECTS REGISTRATION NUMBER 1195
WANSLEA WORKS
Package 2

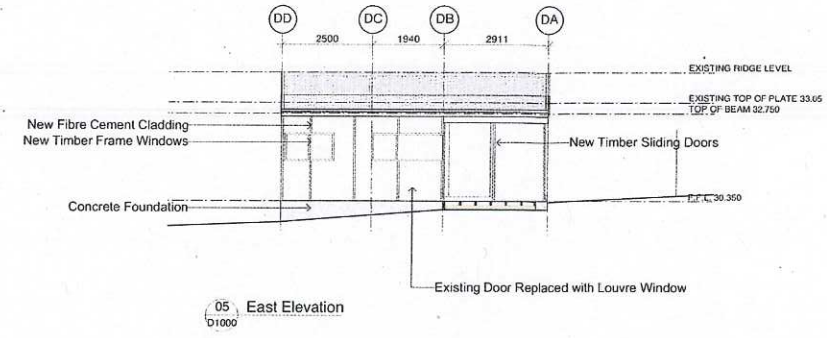
NATIONAL TRUST
NORTH POINT

DRAWING STATUS
Preliminary
CONTRIBUTOR
C. Staff Quarters
DA Plans & Elevations
SCALE
1:100 @ A1
NUMBER & NAME
399_C STAFF QUARTERS
DRAWING ISSUE REVISION
A_C1000 A

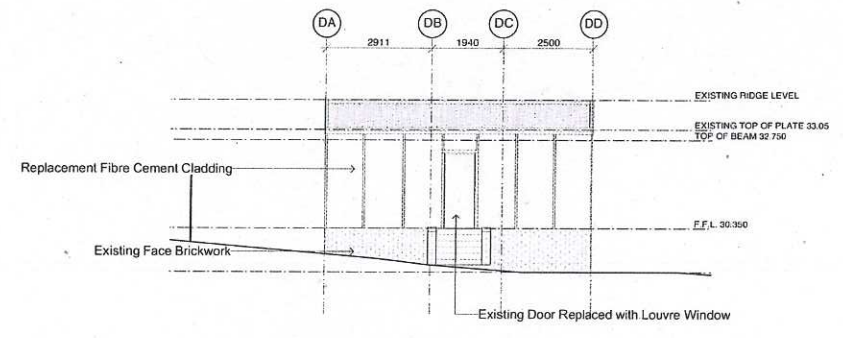
BERNARD SEEBER.com



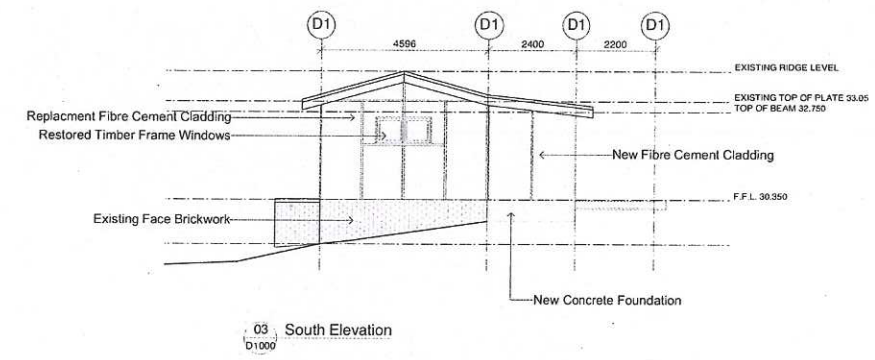
No.	Room Name
D1	Office
D2	Kitchen
E3	Universal WC
E4	Vernadah



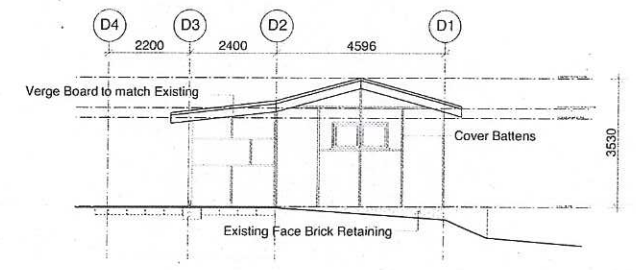
05 East Elevation
D1000



04 West Elevation
D1000



03 South Elevation
D1000



02 North Elevation
D1000



01 Ground Floor Plan
D1000

REV DATE NOTE

A 120903 DA Amendments
ISSUE DATE NOTE

BERNARD SEEBER PTV LTD
ARCHITECTS REGISTRATION NUMBER 1195
WANSLEA WORKS
Package 2

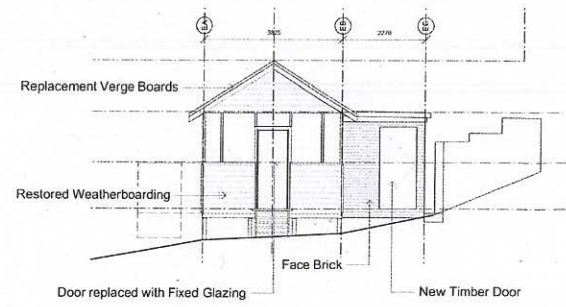
NATIONAL TRUST
NORTHPOINT

①
DRAWING STATUS
Preliminary
CONTENTS
D_Outbuilding 01
DA Plans & Elevations
SCALE
1:100 @ A1
NUMBER & NAME
399_D_OUTBUILDING 01
DRAWING
A_D1000 ISSUE REVISION
A

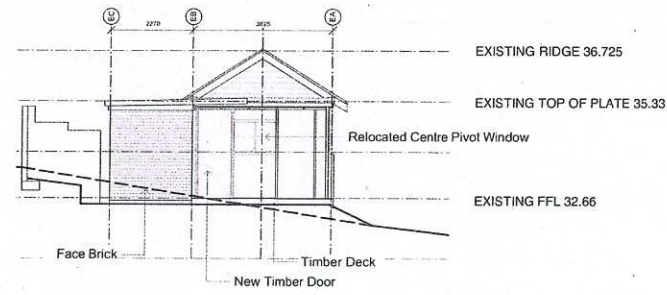
BERNARD SEEBER.COM



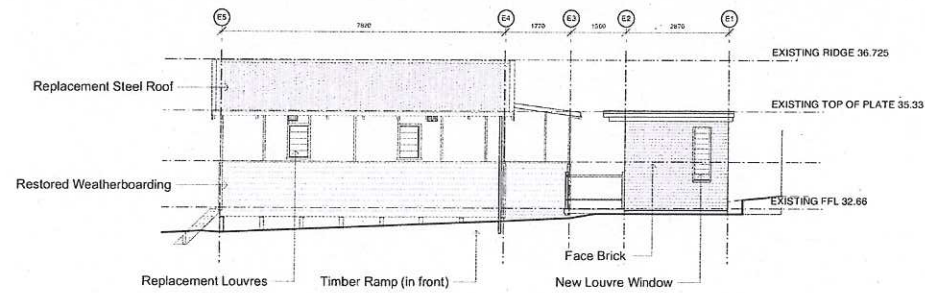
No.	Room Name
E1	Treatment Room
E2	Porch
E3	Store
E4	WC



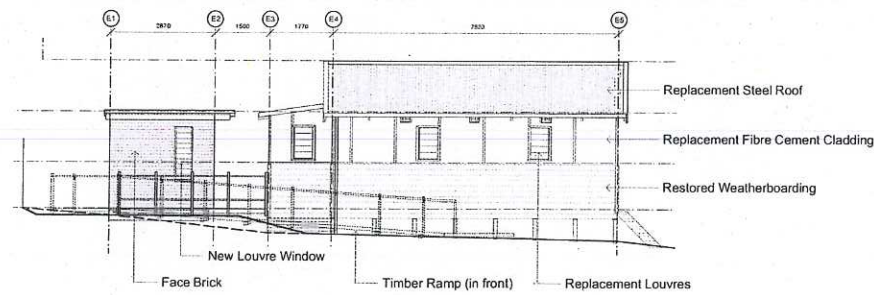
5 South Elevation



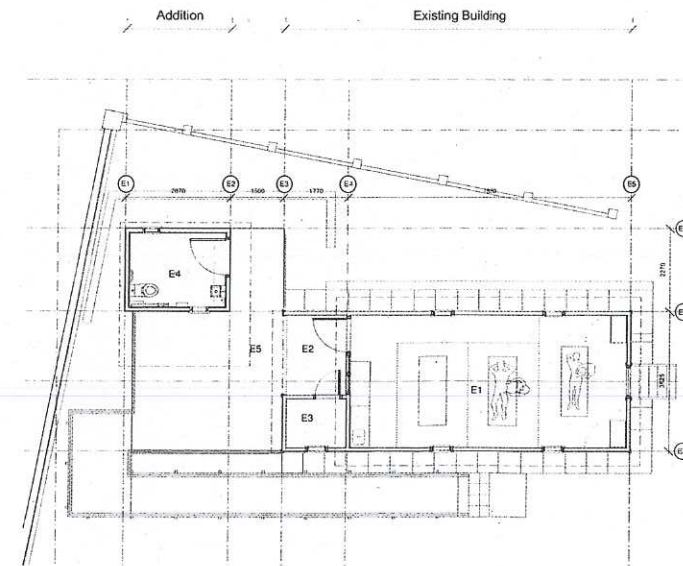
4 North Elevation



3 East Elevation



2 West Elevation



1 Ground Floor Plan

REV DATE NOTE

A 120003 DA Amendments
ISSUE DATE NOTE

BERNARD SEEBER PTY LTD
ARCHITECTS REGISTRATION NUMBER 1195

WANSLEA WORKS
Package 2

NATIONAL TRUST

NORTH POINT

DRAWING STATUS
DRAFT TENDER

CONTENT
E Outbuilding 02

DA Plans & Elevations

SCALE
1:100 @ A1

NUMBER & NAME
399_OUTBUILDING 02

DRAWING
A_E1000

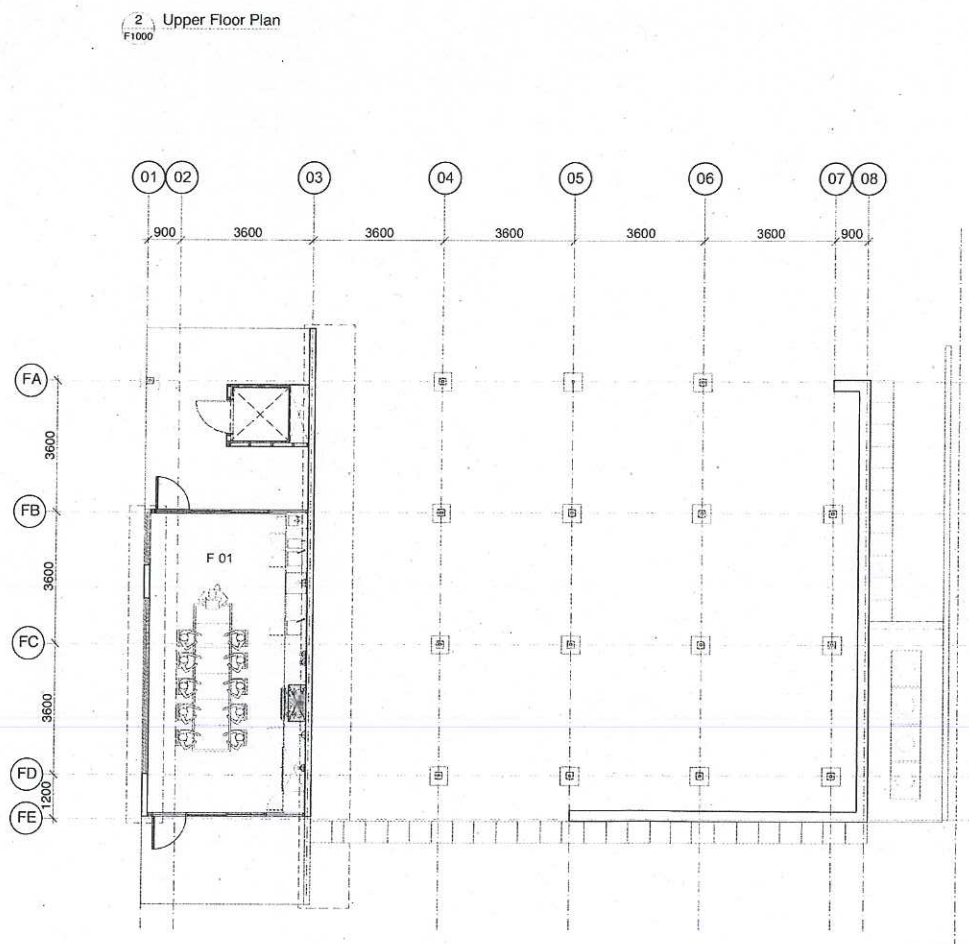
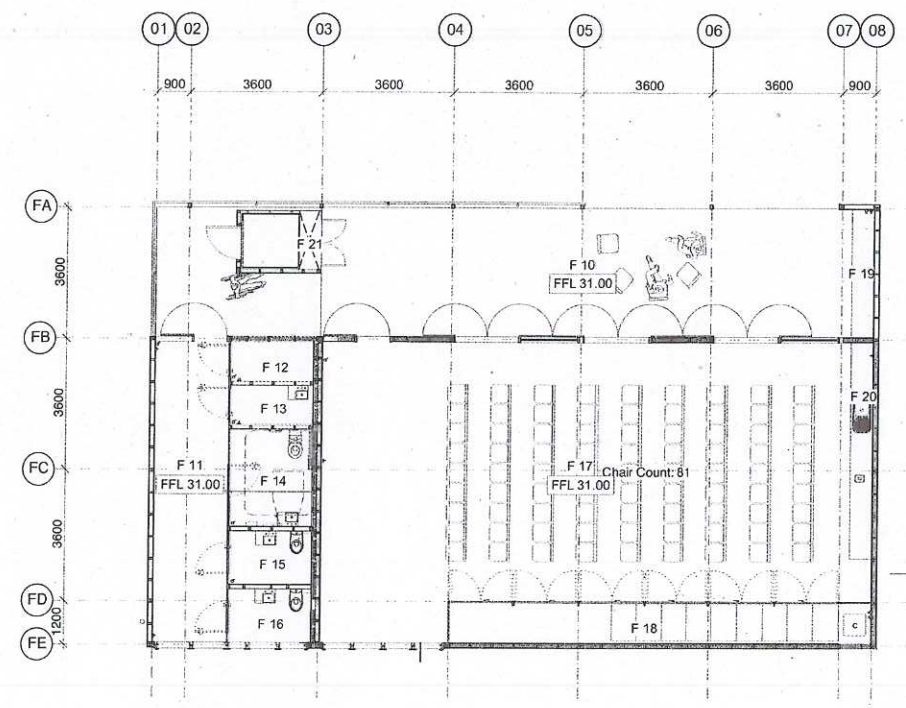
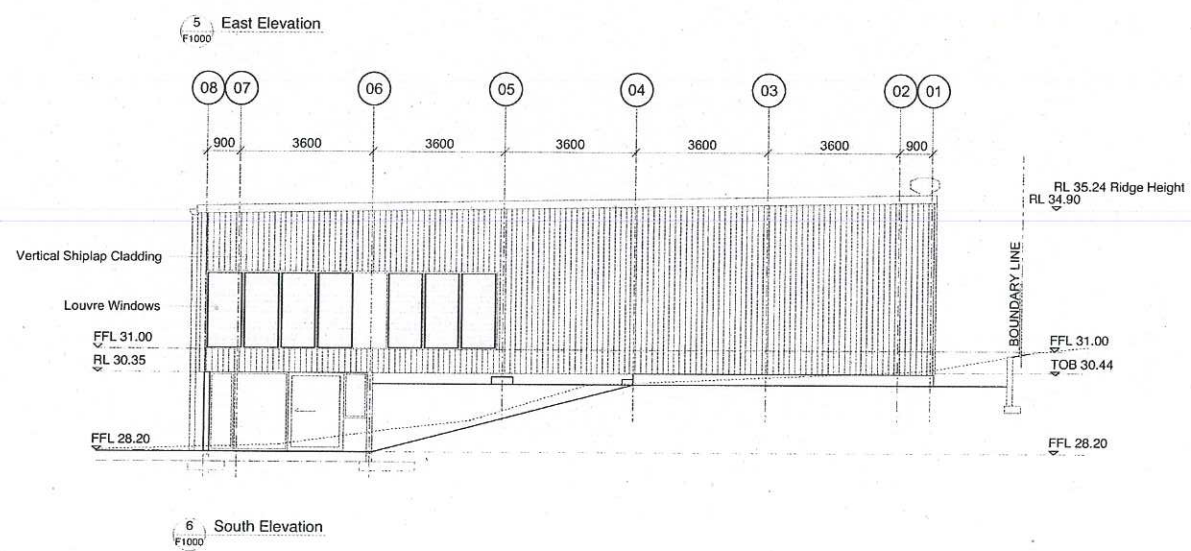
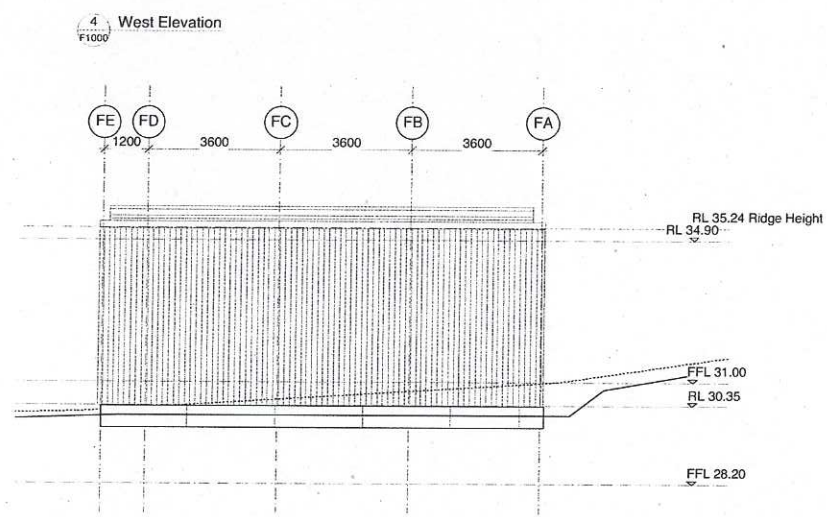
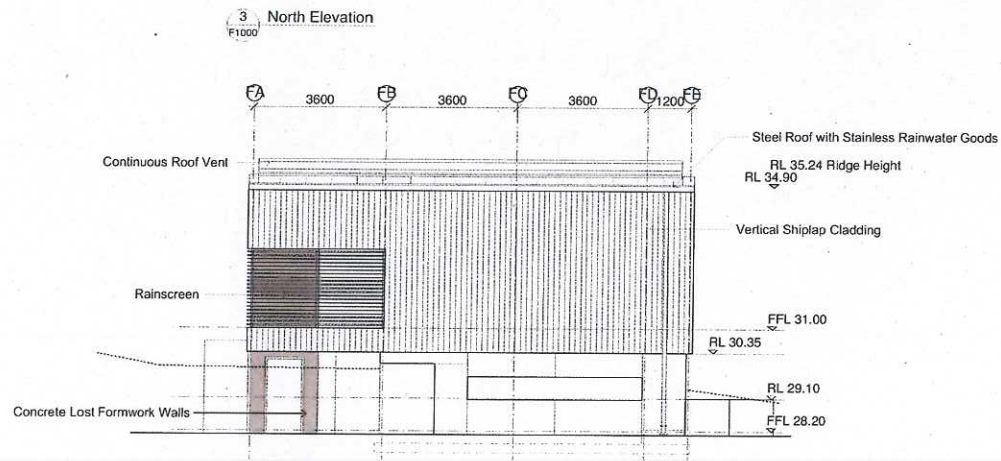
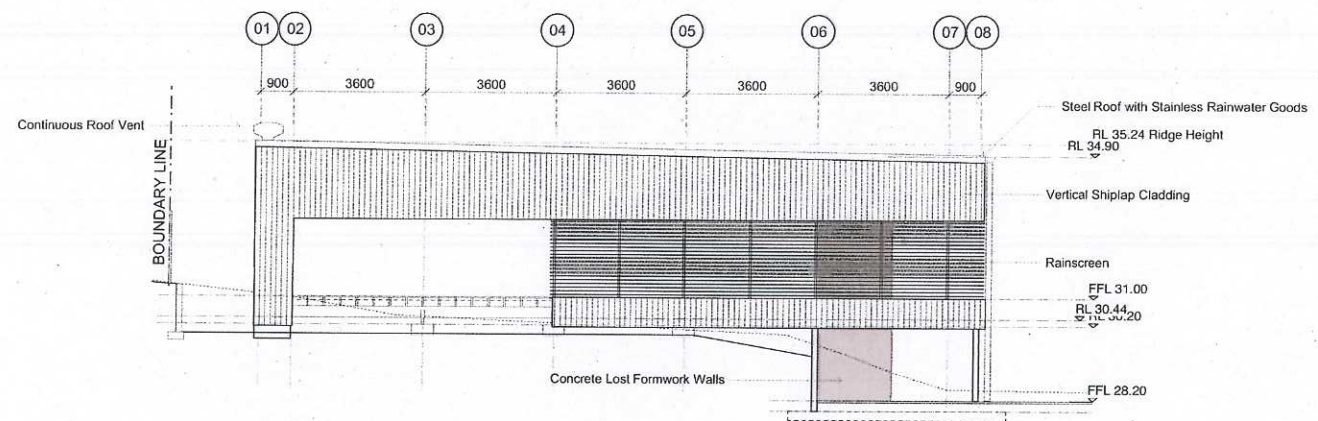
ISSUE REVISION
A

BERNARD SEEBER

COM

TOWN OF COTTESLOE
18 SEP 2012
RECEIVED

ROOM SCHEDULE	
F1	Food Preparation
F10	Verandah
F11	Breezeway
F12	Storage
F13	Cleaners Cupboard
F14	Accessible Toilet
F15	Universal Toilet
F16	Universal Toilet
F17	Wellness
F18	Seat Storage
F19	BBO
F20	Tea Station
F21	Electrical Cupboard



TOWN OF GLENELG
18 SEP 2012
RECEIVED

REV DATE NOYE

A 120623 DA Amendments
ISSUE DATE NOTE

BERNARD SEEBER PTY LTD
ARCHITECTS REGISTRATION NUMBER 1196

WANSLEA WORKS
Package 2

NATIONAL TRUST
NORTH POINT

DRAWING STATUS
PRELIMINARY

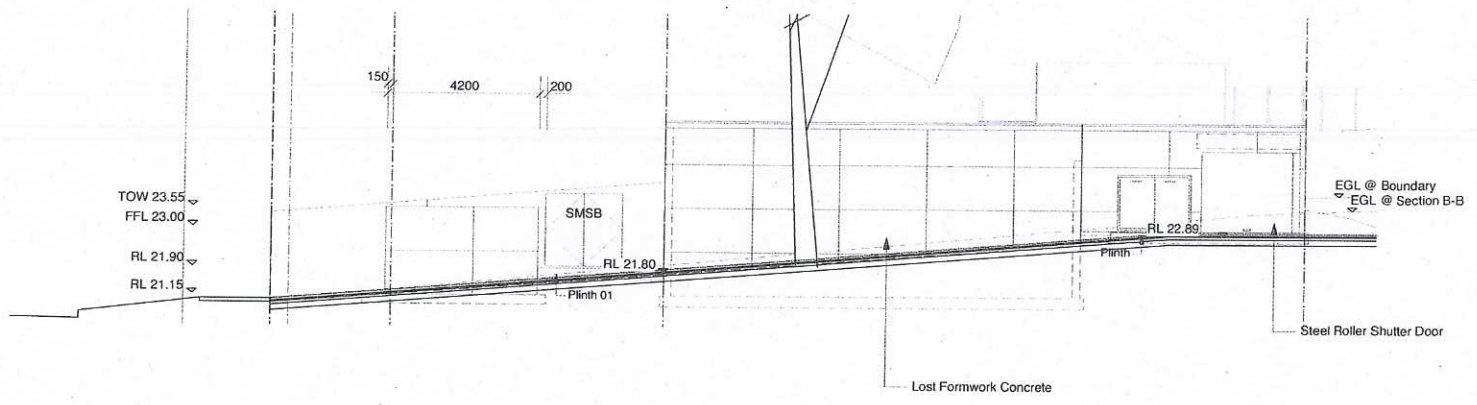
CONTENT
F Outbuilding 03
DA Plans & Elevations

SCALE
1:100 @ A1

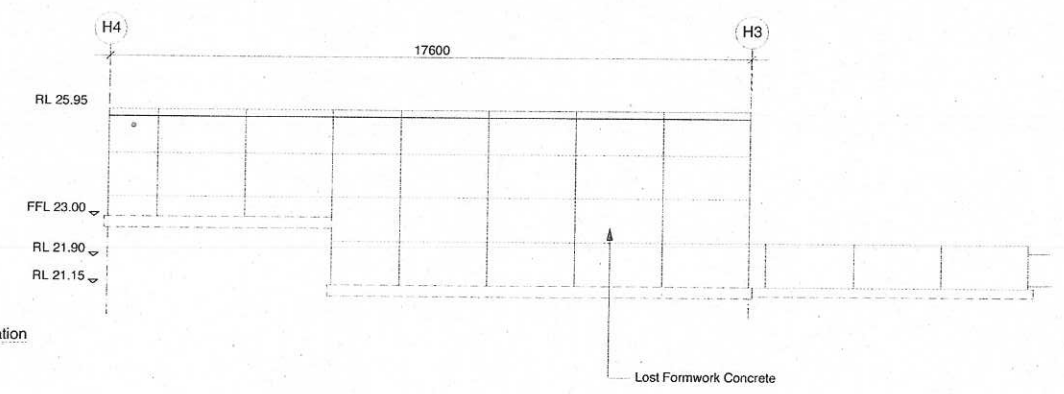
NUMBER & NAME
399_F_OUTBUILDING 03

DRAWING ISSUE REVISION
A_F1000 A

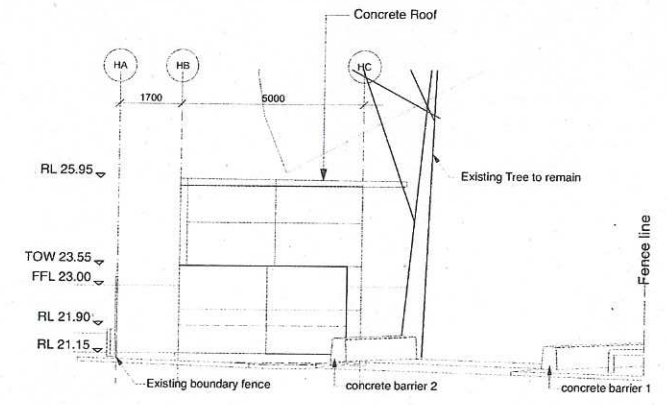
BERNARD SEEBER.COM



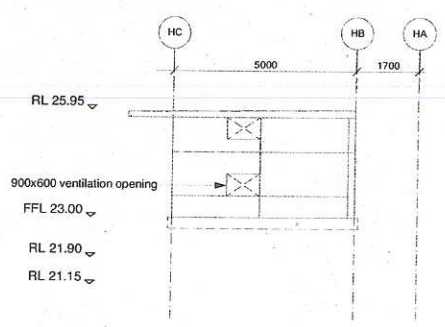
2 South Elevation



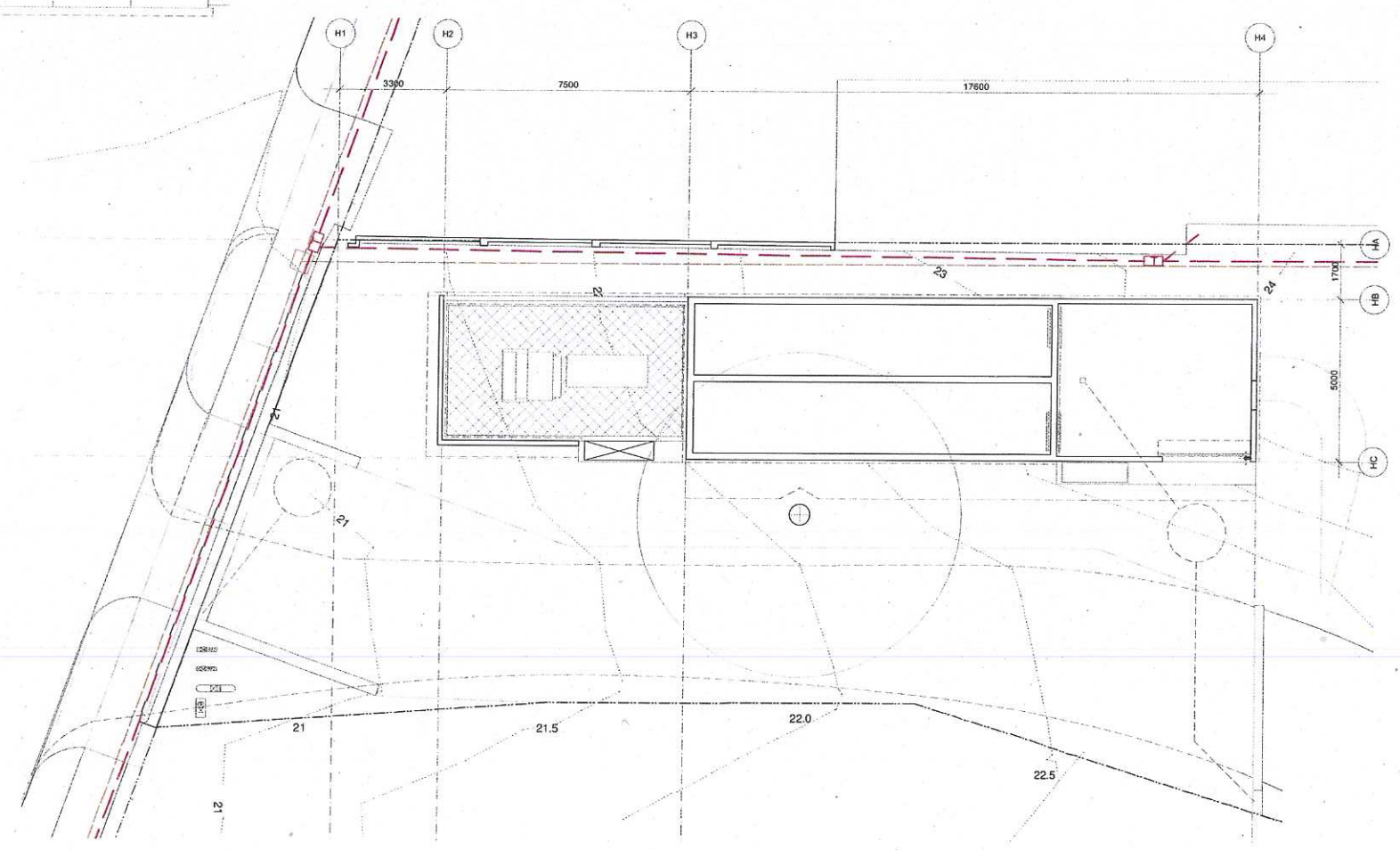
3 North Elevation



4 West Elevation



5 East Elevation



1 Plan

REV DATE NOTE

A 120209 DA Amendments
 ISSUE DATE NOTE

BERNARD SEEBER PTY LTD
 ARCHITECTS REGISTRATION NUMBER 1195

**WANSLEA WORKS
 Package 1**

NATIONAL TRUST
 NORTH POINT

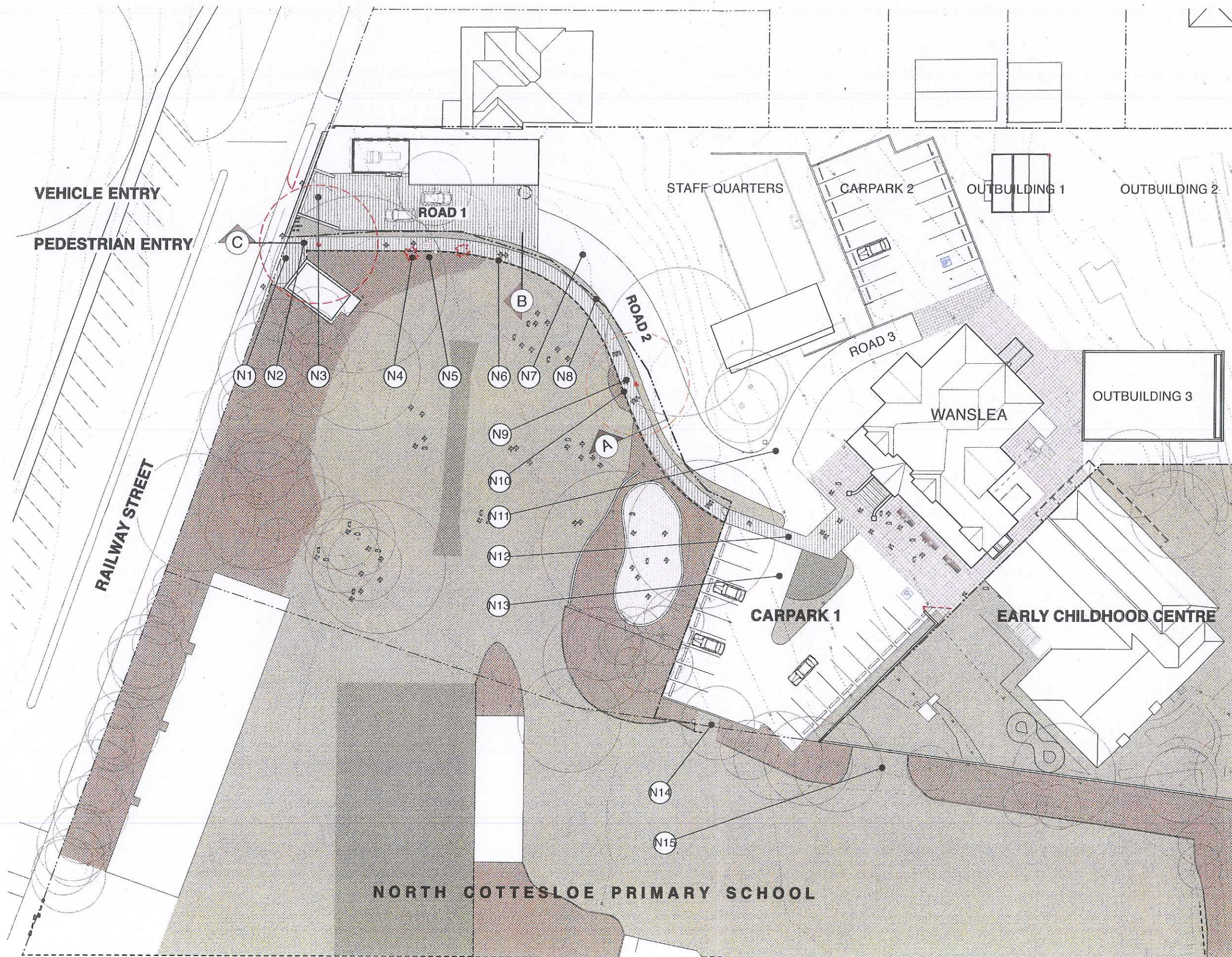
DRAWING STATUS
 Preliminary

CONTENT
 H_Entry
 DA Plans & Elevations
 SCALE
 1:50 @ A1

NUMBER & NAME
 399_H_ENTRY WORKS
 DRAWING ISSUE REVISION
 A_H1000 A

**BERNARD
 SEEBER**.COM

TOWN OF COTTESLOE
 18 SEP 2012
 RECEIVED



- NOTES
- N1 New Pedestrian Entry
 - N2 Existing Tree
 - N3 Upgraded Vehicle Entry
 - N4 Existing Trees
 - N5 Existing Pump
 - N6 New Fence
 - N7 Upgraded Road
 - N8 Landscape Band
 - N9 Existing Tree
 - N10 Retained Pathway
 - N11 Relocated Junction
 - N12 Pedestrian Crossing
 - N13 Upgraded Carpark
 - N14 Closed Access
 - N15 Opened Access

1 120525 To DOE for comment
 REV DATE NOTE
 BERNARD SEEBER PTY LTD
 ARCHITECTS REGISTRATION NUMBER 1195

WANSLEA WORKS



NATIONAL TRUST
 NORTH POINT



DRAWING STATUS
DESIGN
 CONTENT
 K_DOE ACCESS
 SITE PLAN
 SCALE
 1:500 @ A3
 NUMBER & NAME
399_WANSLEA WORKS
 DRAWING REVISION
A_K101 1

18 SEP 2012
 RECEIVED
BERNARD SEEBER.COM