

# TOWN OF COTTESLOE

COTTESLOE, WA

## RAILWAY CORRIDOR GREENING DESIGN

AUGUST 2019



### SHEET TABLE LIST

DRAWING NO.	DRAWING TITLE	Sheet Rev2 Date	Sheet Rev2 No
TITLE SHEETS			
DD-001	COVER PAGE	04/09/2019	B
DD-002	OVERALL SITE PLAN	04/09/2019	B
PLANT SCHEDULE			
DD-100	PLANT SCHEDULE	04/09/2019	B
DD-101	PLANT SCHEDULE	04/09/2019	B
DD-102	PLANT SCHEDULE	04/09/2019	B
DD-103	PLANT SCHEDULE	04/09/2019	B
PLANTING PLAN			
DD-200			
DD-201	PLANTING PLAN	04/09/2019	B
DD-202	PLANTING PLAN	04/09/2019	B
DD-203	PLANTING PLAN	04/09/2019	B
DD-204	PLANTING PLAN	04/09/2019	B
DD-205	PLANTING PLAN	04/09/2019	B
DD-206	PLANTING PLAN	04/09/2019	B
DD-207	PLANTING PLAN	04/09/2019	B
DD-208	PLANTING PLAN	04/09/2019	B
DD-209	PLANTING PLAN	04/09/2019	B
DD-210	PLANTING PLAN	04/09/2019	B
DD-211	PLANTING PLAN	04/09/2019	B
DD-212	PLANTING PLAN	04/09/2019	B
DD-213	PLANTING PLAN	04/09/2019	B
DD-214	PLANTING PLAN	04/09/2019	B
TYPICAL DETAILS			
DD-300	TYPICAL DETAILS	04/09/2019	B
DD-301	TYPICAL DETAILS	04/09/2019	B
SPECIFICATIONS			
DD-400	SPECIFICATIONS	04/09/2019	A

### FINAL ISSUE

DATE	DESCRIPTION	REV
04/09/2019	FINAL ISSUE	B
22/08/2019	ISSUE FOR REVIEW	A

PROJECT TITLE			
<b>TOWN OF COTTESLOE</b>			
RAILWAY CORRIDOR GREENING DESIGN			
COTTESLOE, WA			
DRAWING TITLE			
COVER PAGE			
PROJECT NO.	SCALE @ A3	PLOT DATE	REVISION
1912	N.T.S	04/09/2019	B
FILE PATH P:\01 PROJECTS COMMERCIAL\1912 TOC RAIL CORRIDOR GREENING\08 DRAWINGS\02_BA\03 DETAILED DESIGN\04 SHEET SET MANAGER			
DRAWN	CHECKED	APPROVED	DRAWING NO.
MC	PV	MG	DD-001



**JOSH BYRNE & ASSOCIATES**  
 LANDSCAPE • SUSTAINABILITY • COMMUNICATIONS  
 08 9433 3721  
 Suite 109, Atwell Buildings  
 3 Cantonment Street, Fremantle WA 6160  
 PO Box 1866, Fremantle WA 6959  
 www.joshbyrne.com.au

NOTE: CHECK ALL DIMENSIONS ON SITE PRIOR TO COMMENCING WORK. WRITTEN DIMENSIONS SHALL TAKE PRECEDENCE. ALL DRAWINGS TO BE READ IN CONJUNCTION WITH MANUFACTURERS AND CONSULTANTS DOCUMENTATION AND SPECIFICATION. REPORT ANY DISCREPANCIES TO LANDSCAPE ARCHITECT BEFORE PROCEEDING WITH WORK.

COPYRIGHT © THIS DOCUMENT MAY ONLY BE USED FOR THE PURPOSE FOR WHICH IT WAS COMMISSIONED IN ACCORDANCE WITH THE TERMS OF ENGAGEMENT.



GENUS / SPECIES	NOONGAR'/COMMON NAME	HEIGHT (m)	WIDTH/ SPACING (m)	No. OF PLANTS	TOTAL AREA (m <sup>2</sup> )	LIN m
<b>LANDSCAPE RETAINING MIX (per 100m<sup>2</sup>)</b>						
<b>Trees (Overlay - if appropriate)</b>						
<i>Agonis flexuosa</i>	Wonnill'/ Peppermint Tree	to 10m	10	0.05	0.5	
<i>Allocasuarina fraseriana</i>	Western Sheoak	to 10m	6	0.05	0.3	
<i>Banksia attenuata</i>	Biara'/ Candlestick Banksia	to 10m	2	0.2	0.4	
<i>Banksia grandis</i>	Bull Banksia	1.5-10m	2	0.2	0.4	
<i>Banksia menziesii</i>	Firewood Banksia	to 7m	2	0.2	0.4	
<i>Banksia prionotes</i>	Acorn Banksia	to 10m	2	0.2	0.4	
<i>Eucalyptus argytophylla</i>	Yanchep mallee	to 4m	3	0.2	0.6	
<i>Eucalyptus decipiens</i>	Redheart Moit/ Limestone Marlock	6	3	0.2	0.6	
<i>Eucalyptus foecunda</i>	Fremantle Mallee	to 5m	2	0.2	0.4	
<i>Eucalyptus petrensis</i>	Koodjat'/ Limestone mallee	to 4m	3	0.2	0.6	
<i>Eucalyptus todtiana</i>	Coastal Blackbutt	2-15m	3	0.2	0.6	
<b>TOTAL NUMBER OF PLANTS</b>				<b>1.9</b>		
<b>TOTAL AREA (m<sup>2</sup>)</b>					<b>5</b>	
<i>Atriplex cinerea</i>	Grey Salt Bush	1.5	1.5	3	4.5	
<i>Banksia attenuata</i> (Dwarf)	Biara'/ Candlestick Banksia	1.5	1.5	3	4.5	
<i>Banksia dallanneyi/nivea</i>	Couch Honeygot	0.1	1	4	4	
<i>Banksia grandis</i> (Dwarf)	Little Bull Banksia	1.5	1.5	3	4.5	
<i>Banksia menziesii</i> (Dwarf)	Firewood Banksia	1.5	1.5	3	4.5	
<i>Banksia prionotes</i> (Dwarf)	Acorn Banksia	1.5	1.5	3	4.5	
<i>Carpobrotus virescens</i>	Coastal Pigface	0.1	2.5	2	5	
<i>Conostylis candicans</i>	Grey Cottonheads	0.5	0.25	12	3	
<i>Eremophila glabra</i>		0.3	1	5	5	
<i>Ficinia nodosa</i>	Knotted Club Rush	1	0.5	8	4	
<i>Gastrolobium nervosum</i>		0.5	1	4	4	
<i>Grevillea crithmifolia</i>		0.3	3	2	6	
<i>Grevillea preissii</i>		0.5	1	4	4	
<i>Hemiandra pungens</i>	Snakebush	0.1	1	3	3	
<i>Jacksonia calcicola</i>		0.2-0.6	1.5	3	4.5	
<i>Jacksonia sericea</i>	Waldjumi'	0.2-0.6	1.5	3	4.5	
<i>Melaleuca huegelii</i> (prostrate)	Prostrate Chenille Honey Myrtle	0.2	2	3	6	
<i>Olearia axillaris</i>	Coastal Daisy Bush	1.5	1.5	4	6	
<i>Scaevola crassifolia</i>	Thick leaved Scaevola	1.5	1.5	3	4.5	
<i>Westringia dampieri</i>	Coastal Rosemary	1.5	1	4	4	
<b>TOTAL NUMBER OF PLANTS</b>				<b>79</b>		
<b>TOTAL AREA (m<sup>2</sup>)</b>					<b>100</b>	
<b>TOTAL PLANTS PER 100m<sup>2</sup> (Average of Upper bank, Midbank and Basin)</b>						

## Physical Environment Classifications

The Rail Corridor Area is classified under the following complexes:

### Landform Complex - Spearwood Dune System

- The landform is identified as being within the Spearwood Dune System. This consists of shallow yellow brown sand and exposed limestone

### Soil Complex - Spearwood Sand

- The soil type is identified as Spearwood Sand. This consists of pale and olive-yellow, medium to coarse grained feldspar, moderately sorted, of residual origin.

### Vegetation Complex - Cottesloe - Central and South

- The vegetation type is identified as Cottesloe - Central and South. This consists of a mosaic woodland of Tuarts, Jarrah and Marri, and closed heath of the limestone outcrops

## Planting Design

The planting design utilises the Physical Environment Classifications and divides the space into different typologies using the following guidelines:

### Retaining mix

- Ground covers, grasses and low shrubs that stabilise and retain steep areas
- Small Trees (where appropriate) for further bank stabilisation, visual screening and sound blocking of the train line
- Showcasing texture and flowering plants

### Swale mix

- A mix of plants that can cope/thrive with occasional inundation (wet/ lower bank, mid bank, upper bank)
- Plants that will retain steep swale edges
- An opportunity to develop focussed Flora/Fauna hotspots in fenced off swale areas
- Illustration of a movement of water story, and our endemic species that lie in and along water courses and water stands

### Feature mix

- Feature planting applied to the important public interface areas, such as the path to Cottesloe Beach, secondary paths which traverse the site and road intersections
- An attractive mix of ground covers, grasses and low shrubs that preserve sight lines
- Individual trees that do not impact on sight lines (no mid story)
- Showcasing form, texture, flowering plants and the beauty of local and endemic plants species

### Woodland Mix, Open Woodland Mix, Heath Mix (development of the green corridor)

- Development of an important green corridor and a vital habitat, food and pollinator source for birds and local fauna species.
- Visually soften the train line and PSP and provide a sound inhibitor between local residents and the train line
- Provision of shade or areas to pause in shade along the PSP
- Includes different plant mixes to reflect a Cottesloe Woodland Vegetation Community with 'Woodland' of Tuart Jarrah and Marri, and understory of Banksia, 'Open Woodland' of Tuart, Jarrah, Marri and Banksia as well as smaller local Mallees, and 'Heath' with its coastal ridge planting. These mixes aim to achieve woodlands of trees with a diverse understory and the development of understory in areas with existing trees

### Turf retention areas

- Areas which may be affected by Curtin Rd widening
- Areas retained to create parkland for the purpose of relaxation, games and dog exercise areas.

### Screening mix

- A visual and aural screening tool for industrial areas such as the Power station that will provide a different focus and act as a sound inhibitor.

GENUS / SPECIES	NOONGAR'/COMMON NAME	HEIGHT (m)	WIDTH/ SPACING (m)	No. OF PLANTS	TOTAL AREA (m <sup>2</sup> )	LIN m
<b>SWALE MIX (per 100m<sup>2</sup>)</b>						
<b>Trees - Upper Bank</b>						
<i>Banksia attenuata</i>	Biara'/ Candlestick Banksia	to 10	2	5	10	
<i>Banksia grandis</i>	Bull Banksia	1.5-10	2	5	10	
<i>Banksia menziesii</i>	Firewood Banksia	to 7	2	5	10	
<i>Banksia prionotes</i>	Acorn Banksia	to 10	2	5	10	
<i>Eucalyptus rudis</i>	Flooded Gum	to 15	1	5	5	
<i>Melaleuca lanceolata</i>	Rottnest Island Teatree	5	3	5	15	
<b>Upper Bank</b>						
<i>Acacia alata</i>	Winged Wattle	1	0.5	5	2.5	
<i>Allocasuarina lehmanniana</i>	Dune Sheoak	to 5	1	5	5	
<i>Grevillea preissii</i>		0.5	1	5	5	
<i>Hibbertia glossularifolia</i>		3	1.5	3	4.5	
<i>Jacksonia furcellata</i>	Grey Stinkwood	3	1	6	6	
<i>Jacksonia sternbergiana</i>	Green Stinkwood	3	1	6	6	
<i>Lobelia anceps</i>	Angled Lobelia	to 1.2	0.5	5	2.5	
<i>Pattersonia occidentalis</i>	Purple Flag	to 1.5	0.5	7	3.5	
<i>Vininaerea juncea</i>	Swishbush	1 to 4	1	5	5	
<b>TOTAL NUMBER OF PLANTS (UPPERBANK)</b>				<b>77</b>		
<b>TOTAL AREA (m<sup>2</sup>)</b>					<b>100</b>	
<b>Midbank</b>						
<i>Allocasuarina lehmanniana</i>	Dune Sheoak	to 5	1	12	12	
<i>Conostylis aculeata</i>	Prickly Conostylis	0.5	0.5	15	7.5	
<i>Ficinia nodosa</i>	Knotted Club Rush	1	0.5	15	7.5	
<i>Hibbertia subvaginata</i>		0.5	0.5	12	6	
<i>Isolepis cernua</i>	Nodding Club Rush	0.3	0.33	21	7	
<i>Lepidosperma gladiatum</i>	Coastal Sword-sedge	1.5	1.5	7	10.5	
<i>Lobelia anceps</i>	Angled Lobelia	0.5	0.5	15	7.5	
<i>Melaleuca teritifolia</i>	Banbar'	1 to 5	1	8	8	
<i>Myoporum caprarioides</i>	Slender Myoporum	3	1.5	8	12	
<i>Pattersonia occidentalis</i>	Purple Flag	1	0.5	15	7.5	
<i>Vininaerea juncea</i>	Swishbush	1 to 4	1.5	10	15	
<b>TOTAL NUMBER OF PLANTS (MIDBANK)</b>				<b>138</b>		
<b>TOTAL AREA (m<sup>2</sup>)</b>					<b>100</b>	
<b>Trees - Basin</b>						
<i>Melaleuca cuticularis</i>	Saltwater Paperbark	1 to 7	2	7	14	
<i>Melaleuca preissiana</i>	Modong'/Moonah	to 10	3	5	15	
<i>Melaleuca raphiophylla</i>	Swamp Paperbark	to 8	3	5	15	
<b>Basin</b>						
<i>Acacia willdenowiana</i>	Grass Wattle	0.3-0.6	0.5	15	7.5	
<i>Anigozanthos humilis</i>	Cats Paw	0.1-1	0.5	15	7.5	
<i>Aotus gracillima</i>		0.6-2	1	10	10	
<i>Bolboschoenus caldwelii</i>	Marsh Club-rush	1.2	0.5	20	10	
<i>Isolepis cernua</i>	Nodding Club Rush	0.3	0.33	27	9	
<i>Melaleuca teritifolia</i>	Banbar'	1 to 5	2	6	12	
<b>TOTAL NUMBER OF PLANTS (BASIN)</b>				<b>110</b>		
<b>TOTAL AREA (m<sup>2</sup>)</b>					<b>100</b>	
<b>TOTAL PLANTS PER 100m<sup>2</sup> (Average of Upper bank, Midbank and Basin)</b>				<b>108.3</b>		

# FINAL ISSUE

----	----	----
----	----	----
----	----	----
----	----	----
----	----	----
----	----	----
----	----	----
----	----	----
04/09/2019	FINAL ISSUE	B
22/08/2019	ISSUE FOR REVIEW	A
DATE	DESCRIPTION	REV

PROJECT TITLE			
<b>TOWN OF COTTESLOE</b>			
RAILWAY CORRIDOR GREENING DESIGN			
COTTESLOE, WA			
DRAWING TITLE			
PLANT SCHEDULE			
PROJECT NO. 1912	SCALE @ A3 AS SHOWN	PLOT DATE 04/09/2019	REVISION
FILE PATH P:\01 PROJECTS COMMERCIAL\1912 TOC RAIL CORRIDOR GREENING\08 DRAWINGS\02_BA\03 DETAILED DESIGN\04 SHEET SET MANAGER			<b>B</b>
DRAWN MC	CHECKED PV	APPROVED MG	DRAWING NO. <b>DD-100</b>



**JOSH BYRNE & ASSOCIATES**  
LANDSCAPE • SUSTAINABILITY • COMMUNICATIONS  
08 9433 3721  
Suite 109, Atwell Buildings  
3 Cantonment Street, Fremantle WA 6160  
PO Box 1866, Fremantle WA 6959  
www.joshbyrne.com.au

NOTE: CHECK ALL DIMENSIONS ON SITE PRIOR TO COMMENCING WORK. WRITTEN DIMENSIONS SHALL TAKE PRECEDENCE. ALL DRAWINGS TO BE READ IN CONJUNCTION WITH MANUFACTURERS AND CONSULTANTS DOCUMENTATION AND SPECIFICATION. REPORT ANY DISCREPANCIES TO LANDSCAPE ARCHITECT BEFORE PROCEEDING WITH WORK.

COPYRIGHT © THIS DOCUMENT MAY ONLY BE USED FOR THE PURPOSE FOR WHICH IT WAS COMMISSIONED IN ACCORDANCE WITH THE TERMS OF ENGAGEMENT.

GENUS / SPECIES	NOONGAR'/COMMON NAME	HEIGHT (m)	WIDTH/ SPACING (m)	No. OF PLANTS	TOTAL AREA (m <sup>2</sup> )	LIN m
<b>FEATURE MIX (per 100m<sup>2</sup>)</b>						
<b>Tree (Options)</b>						
<i>Eucalyptus gomphocephala</i>	Tuart	to 40m	20	10	200	
<i>Corymbia maculata</i>	Spotted Gum (Eastern States tree)	15-30	10	8	80	
<b>TOTAL NUMBER OF TREES (45L)</b>				<b>18</b>		
<b>Shrub</b>						
<i>Acacia alata</i>	Winged Wattle	1	0.5	4	2	
<i>Anigozanthos humilis</i>	Cats Paw	0.5-1	0.25	12	3	
<i>Banksia attenuata</i> (Dwarf)	Candlestick Banksia	1	1.5	2	3	
<i>Banksia grandis</i> (Dwarf)	Little Bull Banksia	1.5	1.5	2	3	
<i>Banksia menziesii</i> (Dwarf)	Firewood Banksia	1.5	1.5	2	3	
<i>Banksia prionotes</i> (Dwarf)	Acorn Banksia	1.5	1.5	2	3	
<i>Conostylis aculeata</i>	Prickly Conostylis	0.5m	0.5	6	3	
<i>Conostylis candicans</i>	Grey Cottonheads	0.5m	0.5	6	3	
<i>Dianella Revoluta</i>	Flax Lily	1	0.75	8	6	
<i>Eremophila glabra</i>	Tar Bush	0.3	1	4	4	
<i>Ficinia nodosa</i>	Knotted Club Rush	1	0.5	8	4	
<i>Guichenotia ledifolia</i>		1.5	1.5	7	10.5	
<i>Hibbertia subvaginata</i>	Grey-leaved Coastal Guinea Flower	0.5	0.5	7	3.5	
<i>Leucophyta brownii</i>	Cushion bush	1	1	7	7	
<i>Pattersonia occidentalis</i>	Western Patersonia	1	0.5	7	3.5	
<i>Pimelia ferruginea</i>	Rice Flower	0.3	1	7	7	
<i>Westringia dampieri</i>	Coastal Rosemary	1	1	7	7	
<b>Groundcover</b>						
<i>Banksia dallanneyi/nivea</i>	Couch Honeypot	0.1	1	5	5	
<i>Carpobrotus virens</i>	Coastal Pigface	0.1	1.5	5	7.5	
<i>Grevillea crithmifolia</i>		0.3	1.5	5	7.5	
<i>Kennedia prostrata</i>	Running Postman	0.1	1	4	4	
<b>TOTAL NUMBER OF PLANTS</b>				<b>117</b>		
<b>TOTAL AREA (m<sup>2</sup>)</b>					<b>100</b>	
<b>TOTAL PLANTS PER 100m<sup>2</sup></b>				<b>117</b>		

GENUS / SPECIES	NOONGAR'/COMMON NAME	HEIGHT (m)	WIDTH/ SPACING (m)	No. OF PLANTS	TOTAL AREA (m <sup>2</sup> )	LIN m
<b>CORRIDOR GREENING - WOODLAND (per 100m<sup>2</sup>)</b>						
<b>Trees (Overlay)</b>						
<i>Acacia saligna</i>	Coojong' / Golden Wreath Wattle	to 6m	3	0.1	0.3	
<i>Agonis flexuosa</i>	Wonnill' / Peppermint Tree	to 10m	10	0.1	1	
<i>Banksia attenuata</i>	Biara' / Candlestick Banksia	to 10m	2	0.5	1	
<i>Banksia grandis</i>	Bull Banksia	1.5-10m	2	0.5	1	
<i>Banksia menziesii</i>	Firewood Banksia	to 7m	2	0.5	1	
<i>Banksia prionotes</i>	Acorn Banksia	to 10m	2	0.5	1	
<i>Corymbia calophylla</i>	Marri	10-40m	20	0.1	2	
<i>Eucalyptus gomphocephala</i>	Tuart	to 40m	20	0.1	2	
<i>Eucalyptus marginata</i>	Jarra	10-40m	6	0.1	0.6	
<b>TOTAL NUMBER OF PLANTS</b>				<b>2.5</b>		
<b>TOTAL AREA (m<sup>2</sup>)</b>					<b>10</b>	
<b>Tall Shrubs - 3m+</b>						
<i>Grevillea vestita</i>		to 3m	2	2	4	
<i>Hakea prostrata</i>	Harsh Hakea	1 to 3	1.5	3	4.5	
<i>Hakea trifurcata</i>	Two-leaved Hakea	1.5-3	2	2	4	
<i>Melaleuca huegelii</i>	Chenille Honey myrtle	4	3	1	3	
<b>Medium Shrubs - to 2m</b>						
<i>Acacia lasiocarpa</i>	Panjang'	1.5	1.5	3	4.5	
<i>Acacia pulchella</i>	Prickly Moses	to 2m	0.75	2	1.5	
<i>Allocasuarina humilis</i>	Dwarf Sheoak	1.5	1.5	3	4.5	
<i>Calothamnus sanguineus</i>	Silky-leaved Blood Flower	1.5	1.5	3	4.5	
<i>Calothamnus quadrifidus</i>	One-sided Bottlebrush	2	2	2	4	
<i>Guichenotia ledifolia</i>		1.5	1.5	3	4.5	
<i>Hakea lissocarpa</i>	Honey Bush	1.5	1	4	4	
<i>Logania vaginalis</i>	White Spray	1.8	1.5	3	4.5	
<i>Melaleuca systena</i>	Coastal Honey myrtle	1.5	1.5	3	4.5	
<i>Myoporum insulare</i>	Common Boobialla	2	2	2	4	
<i>Rhagodia baccata</i>	Berry Saltbush.	1.5	1.5	3	4.5	
<i>Templetonia retusa</i>	Cockies tongue	to 2	2	3	6	
<b>Low Shrubs - to 1m</b>						
<i>Acacia alata</i>	Winged Wattle	1	0.5	5	2.5	
<i>Banksia dallanneyi/nivea</i>	Couch Honeypot	0.1	1	2	2	
<i>Eremophila glabra subsp. Alb.</i>	Tar Bush	0.3	1	4	4	
<i>Gompholobium tomentosum</i>	Yellow Pea	0.5m	0.5	4	2	
<i>Grevillea preissii</i>		0.5	1	3	3	
<i>Hibbertia subvaginata</i>	Grey-leaved Coastal Guinea Flower	0.5	0.5	5	2.5	
<i>Hypocallyma robustum</i>	Swan River Myrtle	1	1	3	3	
<i>Jacksonia sericea</i>	Waldjumi'	0.6	1.5	3	4.5	
<i>Phyllanthus calycinus</i>	False Boronia	0.5	0.5	3	1.5	
<i>Pimelea ferruginea</i>		0.3	1	4	4	
<i>Westringia dampieri</i>	Coastal Rosemary	1	1	4	4	
<b>TOTAL NUMBER OF PLANTS</b>				<b>82</b>		
<b>TOTAL AREA (m<sup>2</sup>)</b>					<b>100</b>	
<b>TOTAL PLANTS PER 100m<sup>2</sup></b>				<b>84.5</b>		

## FINAL ISSUE

----	----	----
----	----	----
----	----	----
----	----	----
----	----	----
----	----	----
----	----	----
----	----	----
04/09/2019	FINAL ISSUE	B
22/08/2019	ISSUE FOR REVIEW	A
DATE	DESCRIPTION	REV

PROJECT TITLE			
<b>TOWN OF COTTESLOE</b>			
RAILWAY CORRIDOR GREENING DESIGN			
COTTESLOE, WA			
DRAWING TITLE			
PLANT SCHEDULE			
PROJECT NO. 1912	SCALE @ A3 AS SHOWN	PLOT DATE 04/09/2019	REVISION
FILE PATH P:\01 PROJECTS COMMERCIAL\1912 TOC RAIL CORRIDOR GREENING\02 DRAWINGS\02_BA\03 DETAILED DESIGN\04 SHEET SET MANAGER			<b>B</b>
DRAWN MC	CHECKED PV	APPROVED MG	DRAWING NO. <b>DD-101</b>



**JOSH BYRNE & ASSOCIATES**  
 LANDSCAPE • SUSTAINABILITY • COMMUNICATIONS  
 08 9433 3721  
 Suite 109, Atwell Buildings  
 3 Cantonment Street, Fremantle WA 6160  
 PO Box 1866, Fremantle WA 6959  
 www.joshbyrne.com.au

NOTE: CHECK ALL DIMENSIONS ON SITE PRIOR TO COMMENCING WORK. WRITTEN DIMENSIONS SHALL TAKE PRECEDENCE. ALL DRAWINGS TO BE READ IN CONJUNCTION WITH MANUFACTURERS AND CONSULTANTS DOCUMENTATION AND SPECIFICATION. REPORT ANY DISCREPANCIES TO LANDSCAPE ARCHITECT BEFORE PROCEEDING WITH WORK.

COPYRIGHT © THIS DOCUMENT MAY ONLY BE USED FOR THE PURPOSE FOR WHICH IT WAS COMMISSIONED IN ACCORDANCE WITH THE TERMS OF ENGAGEMENT.

GENUS / SPECIES	NOONGAR'/COMMON NAME	HEIGHT (m)	WIDTH/ SPACING (m)	No. OF PLANTS	TOTAL AREA (m <sup>2</sup> )	LIN m
<b>CORRIDOR GREENING - OPEN WOODLAND (per 100m<sup>2</sup>)</b>						
<b>Trees (Overlay)</b>						
<i>Acacia saligna</i>	Coojong/ Golden Wreath Wattle	to 6m	3	0.2	0.6	
<i>Allocasuarina fraseriana</i>	Western Sheoak	to 10m	6	0.1	0.6	
<i>Banksia attenuata</i>	Biara/ Candlestick Banksia	to 10m	2	0.2	0.4	
<i>Banksia grandis</i>	Bull Banksia	1.5-10m	2	0.2	0.4	
<i>Banksia menziesii</i>	Firewood Banksia	to 7m	2	0.2	0.4	
<i>Banksia prionotes</i>	Acorn Banksia	to 10m	2	0.2	0.4	
<i>Banksia sessilis</i>	Boojak' Parrot Bush	to 5m	1.5	0.2	0.3	
<i>Corymbia calophylla</i>	Marri	10-40m	20	0.1	2	
<i>Eucalyptus argutifolia</i>	Yanchep mallee	to 4m	2	0.3	0.6	
<i>Eucalyptus decipiens</i>	Redheart Moit/ Limestone Marlock	to 15m	3	0.3	0.9	
<i>Eucalyptus foecunda</i>	Fremantle Mallee	to 5m	2	0.3	0.6	
<i>Eucalyptus gomphocephala</i>	Tuart	to 40m	20	0.1	2	
<i>Eucalyptus marginata</i>	Jarra	10-40m	6	0.1	0.6	
<i>Eucalyptus petrensis</i>	Koodjat' / Limestone Mallee	to 4m	2	0.3	0.6	
<i>Eucalyptus todtiana</i>	Coastal Blackbutt	2-8m	2	0.3	0.6	
<b>TOTAL NUMBER OF PLANTS</b>				<b>3.1</b>		
<b>TOTAL AREA (m<sup>2</sup>)</b>					<b>11</b>	
<b>Tall Shrubs - to 3m+</b>						
<i>Allocasuarina lehmanniana</i>	Dune Sheoak	3-4m	1.5	2	3	
<i>Grevillea vestita</i>		to 3m	2	2	4	
<i>Hakea prostrata</i>	Harsh Hakea	1 to 3	1.5	2	3	
<i>Hakea trifurcata</i>	Two-leaved Hakea	1.5-3	2	2	4	
<i>Jacksonia sternbergiana</i>	Green Stinkwood	3	1	2	2	
<i>Melaleuca huegelii</i>	Chenille Honey Myrtle	3	3	2	6	
<i>Myoporum caprarioides</i>	Slender Myoporum	3	1.5	2	3	
<b>Medium Shrubs - to 2m</b>						
<i>Acacia lasiocarpa</i>	Panjang'	1.5	1.5	2	3	
<i>Acacia pulchella</i>	Pricly Moses	to 2m	0.75	4	3	
<i>Acacia truncata</i>	Angle leaved Wattle	1.5	1.5	2	3	
<i>Allocasuarina humilis</i>	Dwarf Sheoak	1.5	1.5	2	3	
<i>Calothamnus sanguineus</i>	Silky-leaved Blood Flower	1.5	1.5	2	3	
<i>Calothamnus quadrifidus</i>	One-sided Bottlebrush	2	2	2	4	
<i>Dodonaea aptera</i>	Coast Hopbush	2	2	2	4	
<i>Guichenotia ledifolia</i>		1.5	1.5	2	3	
<i>Hakea lissocarpa</i>	Honey Bush	1.5	1	3	3	
<i>Logania vaginalis</i>	White Spray	1.8	1.5	2	3	
<i>Melaleuca systema</i>	Coastal Honey Myrtle	1.5	1.5	2	3	
<i>Myoporum insulare</i>	Common Boobialla	2	2	2	4	
<i>Rhagodia baccata</i>	Berry Saltbush.	1.5	1.5	2	3	
<i>Scaevola nitida</i>	Shining Fanflower	1.5-3	1.5	2	3	
<i>Templetonia retusa</i>	Cockies tongue	to 2m	2	2	4	
<b>Low Shrubs - to 1m</b>						
<i>Acacia alata</i>	Winged Wattle	1	0.5	4	2	
<i>Banksia dallanneyi/nivea</i>	Couch Honey Pot	0.1	1	4	4	
<i>Eremophila glabra subsp. Alb.</i>	Tar Bush	0.3	1	3	3	
<i>Gompholobium tomentosum</i>	Yellow Pea	0.5m	0.5	4	2	
<i>Grevillea preissii</i>		0.5	1	2	2	
<i>Hibbertia subvaginata</i>	Grey-leaved Coastal Guinea Flower	0.5	0.5	4	2	
<i>Hypocallyma robustum</i>	Swan River Myrtle	1	1	2	2	
<i>Jacksonia sericea</i>	Waldjumi'	0.6	1.5	2	3	
<i>Phyllanthus calycinus</i>	False Boronia	0.5	0.5	4	2	
<i>Westringia dampieri</i>	Coastal Rosemary	1	1	4	4	
<b>TOTAL NUMBER OF PLANTS</b>				<b>80</b>		
<b>TOTAL AREA (m<sup>2</sup>)</b>					<b>100</b>	
<b>TOTAL PLANTS PER 100m<sup>2</sup></b>				<b>83.1</b>		

## FINAL ISSUE

----	----	----
----	----	----
----	----	----
----	----	----
----	----	----
----	----	----
----	----	----
----	----	----
04/09/2019	FINAL ISSUE	B
22/08/2019	ISSUE FOR REVIEW	A
DATE	DESCRIPTION	REV

PROJECT TITLE			
<b>TOWN OF COTTESLOE</b>			
RAILWAY CORRIDOR GREENING DESIGN			
COTTESLOE, WA			
DRAWING TITLE			
PLANT SCHEDULE			
PROJECT NO. 1912	SCALE @ A3 AS SHOWN	PLOT DATE 04/09/2019	REVISION
FILE PATH P:\01 PROJECTS\COMMERCIAL\1912 TOC RAIL CORRIDOR GREENING\08 DRAWINGS\02_BA\03 DETAILED DESIGN\04 SHEET SET MANAGER			<b>B</b>
DRAWN MC	CHECKED PV	APPROVED MG	DRAWING NO. <b>DD-102</b>



**JOSH BYRNE & ASSOCIATES**  
 LANDSCAPE • SUSTAINABILITY • COMMUNICATIONS  
 08 9433 3721  
 Suite 109, Atwell Buildings  
 3 Cantonment Street, Fremantle WA 6160  
 PO Box 1866, Fremantle WA 6959  
 www.joshbyrne.com.au

NOTE: CHECK ALL DIMENSIONS ON SITE PRIOR TO COMMENCING WORK. WRITTEN DIMENSIONS SHALL TAKE PRECEDENCE. ALL DRAWINGS TO BE READ IN CONJUNCTION WITH MANUFACTURERS AND CONSULTANTS DOCUMENTATION AND SPECIFICATION. REPORT ANY DISCREPANCIES TO LANDSCAPE ARCHITECT BEFORE PROCEEDING WITH WORK.

COPYRIGHT © THIS DOCUMENT MAY ONLY BE USED FOR THE PURPOSE FOR WHICH IT WAS COMMISSIONED IN ACCORDANCE WITH THE TERMS OF ENGAGEMENT.

GENUS / SPECIES	NOONGAR'/COMMON NAME	HEIGHT (m)	WIDTH/ SPACING (m)	No. OF PLANTS	TOTAL AREA (m <sup>2</sup> )	LIN m
<b>CORRIDOR GREENING - HEATH (per 100m2)</b>						
<b>Trees</b>						
<i>Acacia saligna</i>	Coojong'/ Golden Wreath Wattle	to 6m	3	0.3	0.9	
<i>Agonis flexuosa</i>	Wonnill'/ Peppermint Tree	to 10m	10	0.1	1	
<i>Allocasuarina fraseriana</i>	Western Sheoak	to 10m	6	0.2	1.2	
<i>Banksia attenuata</i>	Biara'/ Candlestick Banksia	to 10m	2	0.3	0.6	
<i>Banksia grandis</i>	Bull Banksia	1.5-10m	2	0.3	0.6	
<i>Banksia menziesii</i>	Firewood Banksia	to 7m	2	0.3	0.6	
<i>Banksia prionotes</i>	Acorn Banksia	to 10m	2	0.3	0.6	
<i>Banksia sessilis</i>	Boojak' Parrot Bush	to 5m	1.5	0.1	0.15	
<i>Callitris preissii</i>	Rottneest Island Pine	6	3	0.2	0.6	
<i>Eucalyptus argutifolia</i>	Yanchep mallee	to 4m	3	0.2	0.6	
<i>Eucalyptus decipiens</i>	Redheart Moit/ Limestone Marlock	6	3	0.2	0.6	
<i>Eucalyptus foecunda</i>	Fremantle Mallee	to 5m	2	0.3	0.6	
<i>Eucalyptus petrensis</i>	Koodjat'/ Limestone mallee	to 4m	3	0.2	0.6	
<i>Eucalyptus todtiana</i>	Coastal Blackbutt	2-15m	3	0.2	0.6	
<i>Melaleuca lanceolata</i>	Rottneest Island Teatree	to 8m	2	0.3	0.6	
<b>TOTAL NUMBER OF PLANTS</b>				<b>3-5</b>		
<b>TOTAL AREA (m<sup>2</sup>)</b>					<b>10</b>	
<b>Tall Shrubs - to 3m+</b>						
<i>Acacia cochlearis</i>	Rigid Wattle	to 3m	2	1	2	
<i>Acacia cyclops</i>	Coastal wattle/ Cyclops Wattle	3	3	1	3	
<i>Acacia xanthina</i>	White -stemmed Wattle	2- 4m	2	1	2	
<i>Allocasuarina lehmanniana</i>	Dune Sheoak	3-4m	1.5	2	3	
<i>Calothamnus quadrifidus</i>	One-sided Bottlebrush	2	2	1	2	
<i>Dodonaea aptera</i>	Coast Hopbush	2	2	1	2	
<i>Grevillea vestita</i>		to 3m	2	1	2	
<i>Hakea prostrata</i>	Harsh Hakea	1-3m	1.5	2	3	
<i>Hakea trifurcata</i>	Two-leaved Hakea	1.5-3m	2	1	2	
<i>Leucopogon parviflorus</i>	Coast Beard-Heath	to 3m	2	1	2	
<i>Melaleuca huegelii</i>	Chenille Honey myrtle	3	2	1	2	
<i>Myoporum insulare</i>	Blueberry Tree	2	2	1	2	
<b>Mid Shrubs - to 2m</b>						
<i>Acacia truncata</i>	Angle leaved Wattle	1.5	1.5	2	3	
<i>Allocasuarina humilis</i>	Dwarf Sheoak	1.5	1.5	2	3	
<i>Anthocercis ilicifolia</i>		1.5	1.5	2	3	
<i>Atriplex cinerea</i>	Grey Salt Bush	1.5	1.5	2	3	
<i>Atriplex isatidea</i>	Coast Saltbush	1.5	1.5	2	3	
<i>Logania vaginalis</i>	White Spray	1.8	1.5	2	3	
<i>Melaleuca cardiophylla</i>	Tangling Melaleuca	1.5	1.5	2	3	
<i>Melaleuca systema</i>	Coastal Honey myrtle	1.5	1.5	2	3	
<i>Myoporum insulare</i>	Common Boobiella	2	2	2	4	
<i>Olearia axillaris</i>	Coastal Daisy Bush	1.5	1.5	2	3	
<i>Rhagodia baccata</i>	Berry Saltbush.	1.5	1.5	2	3	
<i>Scaevola crassifolia</i>	Thick leaved Scaevola	1.5	2	2	4	
<i>Scaevola nitida</i>	Shining Fanflower	1.5	2	2	4	
<i>Templetonia retusa</i>	Cookies tongue	to 2m	2	2	4	
<b>Low Shrubs - to 1m</b>						
<i>Acacia alata</i>	Winged Wattle	1	0.5	4	2	
<i>Acanthocarpus preissii</i>	Prickly Lily	0.75	0.75	4	3	
<i>Banksia dallanneyi/nivea</i>	Couch Honey pot	0.1	1	2	2	
<i>Eremophila glabra subsp. Alb.</i>	Tar Bush	0.3	1	2	2	
<i>Gompholobium tomentosum</i>	Yellow Pea	0.5	0.5	4	2	
<i>Hibbertia subvaginata</i>	Grey-leaved Coastal Guinea Flower	0.5	0.5	4	2	
<i>Hypocallyma robustum</i>	Swan River Myrtle	1	1	2	2	
<i>Jacksonia sericea</i>	Waldjumi'	0.6m	1.5	2	3	
<i>Leucophyta brownii</i>	Cushion Bush	1	1	2	2	
<i>Pimelea ferruginea</i>	Coast Banjine	0.3	1	3	3	
<i>Thomasia cognata</i>		0.4	0.5	4	2	
<i>Westringia dampieri</i>	Coastal Rosemary	1	1	2	2	
<b>TOTAL NUMBER OF PLANTS</b>				<b>77</b>		
<b>TOTAL AREA (m<sup>2</sup>)</b>					<b>100</b>	
<b>TOTAL PLANTS PER 100M2</b>				<b>80.5</b>		

GENUS / SPECIES	NOONGAR'/COMMON NAME	HEIGHT (m)	WIDTH/ SPACING (m)	No. OF PLANTS	TOTAL AREA (m <sup>2</sup> )	LIN m
<b>CORRIDOR GREENING OPTIONS - COPSE</b>						
<b>Trees (Plant in groups of 3, 5, or 7)</b>						
<i>Agonis flexuosa</i>	Wonnill'/ Peppermint Tree	to 15m	10	5		
<i>Allocasuarina fraseriana</i>	Western Sheoak	to 12m	4	7		
<i>Eucalyptus argutifolia</i>	Yanchep mallee	to 4m	2.5	5		
<i>Eucalyptus decipiens</i>	Redheart Moit/ Limestone Marlock	to 15m	3	5		
<i>Eucalyptus foecunda</i>	Fremantle Mallee	to 5m	2.5	5		
<i>Eucalyptus todtiana</i>	Coastal Blackbutt	2-15m	2.5	5		
<b>NUMBERS INCLUDED IN INDIVIDUAL MIXES</b>						
<b>SCREENING OPTIONS (for approx 300 linear metres)</b>						
<b>Trees/Tall shrubs</b>						
<i>Agonis flexuosa (nana)</i>	Dwarf WA Peppermint (prunable)	1-2m	2			
<i>Allocasuarina fraseriana</i>	Western Sheoak	to 10m	6			
<i>Callitris preissii</i>	Rottneest Island Pine	6	4			
<i>Melaleuca huegelii</i>	Chenille Honey myrtle (prunable)	to 4	4			
<i>Templetonia retusa</i>	Cookies tongue (prunable)	2	4	75		300
<b>TOTAL NUMBER OF PLANTS</b>				<b>75</b>		
<b>TOTAL LINEAR METRES</b>						<b>300</b>

### Plant Schedule

All plants recommended within the plant schedule are local and endemic plants chosen with aid from the following sources:

- Apce Revegetation Catalogue - Cottesloe Vegetation Complex
- Apce Coastal Species compiled by Richard McDowell of Apce training
- Coastal Plants by Kingsley Dixon  
Dixon, Kingsley W, 2011, CSIRO Publishing, 150 Oxford St, Collingwood, Victoria Australia 3066
- Cottesloe Natural Areas Management Plan - Final 22 September 2008. Prepared by Ecoscape (Australia) Pty Ltd, 6197-1990-07R Final

All plants included in The Plant Schedule are confirmed to be currently in production by Apce, Trillion Trees or Plantrite.

### General Planting recommendations

- Using 45L trees rather than 200L trees will give a better health, growth and survival rate.

### General recommendations

- Remove dead trees, trim unsightly or damaged branches
- Remove significant weed species before planting
- Consider CPTED principles
  - Ensure mature trees wont obscure lighting.
  - Place mid-story planting back from paths, to remove possible hiding places close to pathways.
- Ensure vegetation placement within the road reserve complies with Main Roads Standards

<https://www.mainroads.wa.gov.au/BuildingRoads/StandardsTechnical/RoadandTrafficEngineering/RoadsideItems/Pages/Revegetation-and-Landscaping.aspx>

## FINAL ISSUE

----	----	----
----	----	----
----	----	----
----	----	----
----	----	----
----	----	----
----	----	----
----	----	----
04/09/2019	FINAL ISSUE	B
22/08/2019	ISSUE FOR REVIEW	A
DATE	DESCRIPTION	REV


PROJECT TITLE  
**TOWN OF COTTESLOE**  
RAILWAY CORRIDOR GREENING DESIGN  
COTTESLOE, WA

DRAWING TITLE  
**PLANT SCHEDULE**

PROJECT NO. 1912      SCALE @ A3 AS SHOWN      PLOT DATE 04/09/2019      REVISION B

FILE PATH  
P:\01 PROJECTS COMMERCIAL\1912 TOC RAIL CORRIDOR GREENING\08 DRAWINGS\02\_BA\03 DETAILED DESIGN\04 SHEET SET MANAGER

DRAWN MC      CHECKED PV      APPROVED MG      DRAWING NO. DD-103

 **JOSH BYRNE & ASSOCIATES**  
LANDSCAPE • SUSTAINABILITY • COMMUNICATIONS  
08 9433 3721  
Suite 109, Atwell Buildings  
3 Cantonment Street, Fremantle WA 6160  
PO Box 1866, Fremantle WA 6959  
[www.joshbyrne.com.au](http://www.joshbyrne.com.au)

NOTE: CHECK ALL DIMENSIONS ON SITE PRIOR TO COMMENCING WORK. WRITTEN DIMENSIONS SHALL TAKE PRECEDENCE. ALL DRAWINGS TO BE READ IN CONJUNCTION WITH MANUFACTURERS AND CONSULTANTS DOCUMENTATION AND SPECIFICATION. REPORT ANY DISCREPANCIES TO LANDSCAPE ARCHITECT BEFORE PROCEEDING WITH WORK.

COPYRIGHT © THIS DOCUMENT MAY ONLY BE USED FOR THE PURPOSE FOR WHICH IT WAS COMMISSIONED IN ACCORDANCE WITH THE TERMS OF ENGAGEMENT.



**LEGEND**

**SOFTWORKS**

- EXISTING TREES
- EXISTING VEGETATION
- PROPOSED TREES
- RETAINING MIX
- RETAINING MIX + HYD. MULCH
- SWALE MIX
- FEATURE MIX
- WOODLAND MIX
- OPEN WOODLAND MIX
- HEATH MIX
- SCREENING MIX
- TURF
- MULCH
- JUTE MATT TREATMENT
- FUTURE WORKS
- FUTURE ARTWORK LOCATION
- FUTURE REST STOP LOCATION

**EXISTING SERVICES**

- WATER
- SEWER
- COMS - GENERAL
- POWER - UNDERGROUND
- POWER - OVERHEAD
- POWER - PTS LOW VOLTAGE
- GAS
- DRAINAGE
- UNKNOWN

**EASEMENT / RESERVE**

- ROAD RESERVE

**TREE ABBREVIATIONS**

- Eg - *Eucalyptus gomphocephala* (Tuart)
- Cm - *Eucalyptus cladocalyx* nana (Dwarf Sugar Gum)

**FINAL ISSUE**

04/09/2019	FINAL ISSUE	B
22/08/2019	ISSUE FOR REVIEW	A
DATE	DESCRIPTION	REV

PROJECT TITLE  
**TOWN OF COTTESLOE**  
 RAILWAY CORRIDOR GREENING DESIGN  
 COTTESLOE, WA

DRAWING TITLE  
**PLANTING PLAN**

PROJECT NO. 1912	SCALE @ A3 AS SHOWN	PLOT DATE 04/09/2019	REVISION B
---------------------	------------------------	-------------------------	---------------

FILE PATH P:\10 PROJECTS COMMERCIAL\1912 TOC RAIL CORRIDOR GREENING\08 DRAWINGS\02_09\03 DETAILED DESIGN\04 SHEET SET MANAGER	DRAWN MC	CHECKED PV	APPROVED MG	DRAWING NO. DD-200
--	-------------	---------------	----------------	-----------------------

**JOSH BYRNE & ASSOCIATES**  
 LANDSCAPE • SUSTAINABILITY • COMMUNICATIONS

08 9433 3721  
 Suite 109, Atwell Buildings  
 3 Cantonment Street, Fremantle WA 6160  
 PO Box 1866, Fremantle WA 6959  
 www.joshbyrne.com.au

NOTE: CHECK ALL DIMENSIONS ON SITE PRIOR TO COMMENCING WORK. WRITTEN DIMENSIONS SHALL TAKE PRECEDENCE. ALL DRAWINGS TO BE READ IN CONJUNCTION WITH MANUFACTURERS AND CONSULTANTS DOCUMENTATION AND SPECIFICATION. REPORT ANY DISCREPANCIES TO LANDSCAPE ARCHITECT BEFORE PROCEEDING WITH WORK.

COPYRIGHT © THIS DOCUMENT MAY ONLY BE USED FOR THE PURPOSE FOR WHICH IT WAS COMMISSIONED IN ACCORDANCE WITH THE TERMS OF ENGAGEMENT.

REFER DD-201

1:500

























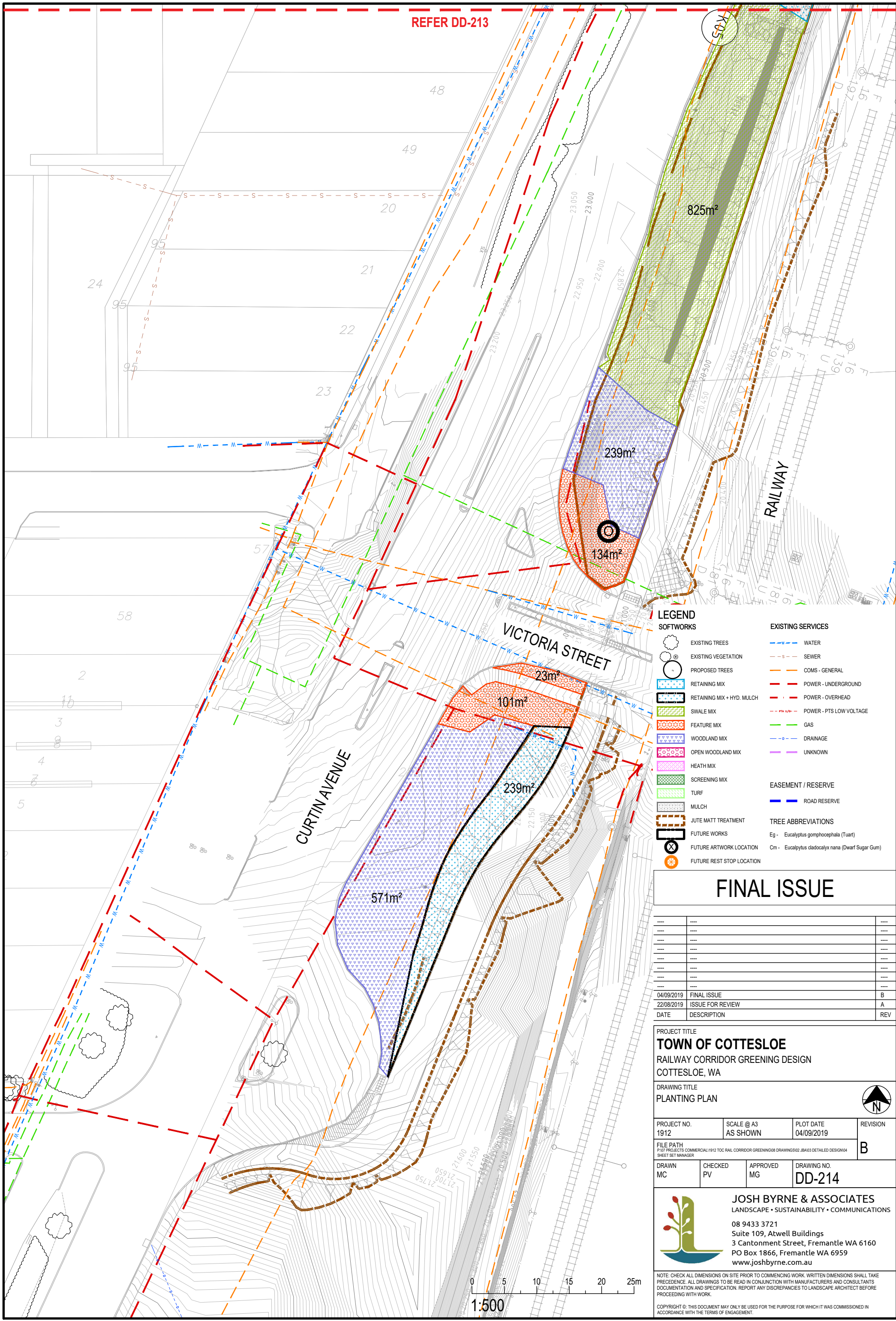






REFER DD-213

50%K



LEGEND

- SOFTWORKS**
- EXISTING TREES
  - EXISTING VEGETATION
  - PROPOSED TREES
  - RETAINING MIX
  - RETAINING MIX + HYD. MULCH
  - SWALE MIX
  - FEATURE MIX
  - WOODLAND MIX
  - OPEN WOODLAND MIX
  - HEATH MIX
  - SCREENING MIX
  - TURF
  - MULCH
  - JUTE MATT TREATMENT
  - FUTURE WORKS
  - FUTURE ARTWORK LOCATION
  - FUTURE REST STOP LOCATION
- EXISTING SERVICES**
- WATER
  - SEWER
  - COMS - GENERAL
  - POWER - UNDERGROUND
  - POWER - OVERHEAD
  - POWER - PTS LOW VOLTAGE
  - GAS
  - DRAINAGE
  - UNKNOWN
- EASEMENT / RESERVE**
- ROAD RESERVE
- TREE ABBREVIATIONS**
- Eg - Eucalyptus gomphocephala (Tuart)
  - Cm - Eucalyptus diadocalyx nana (Dwarf Sugar Gum)

FINAL ISSUE

04/09/2019	FINAL ISSUE	B
22/08/2019	ISSUE FOR REVIEW	A
DATE	DESCRIPTION	REV

PROJECT TITLE  
**TOWN OF COTTESLOE**  
 RAILWAY CORRIDOR GREENING DESIGN  
 COTTESLOE, WA

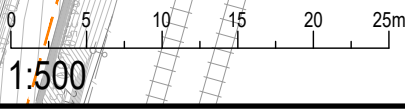
DRAWING TITLE  
**PLANTING PLAN**

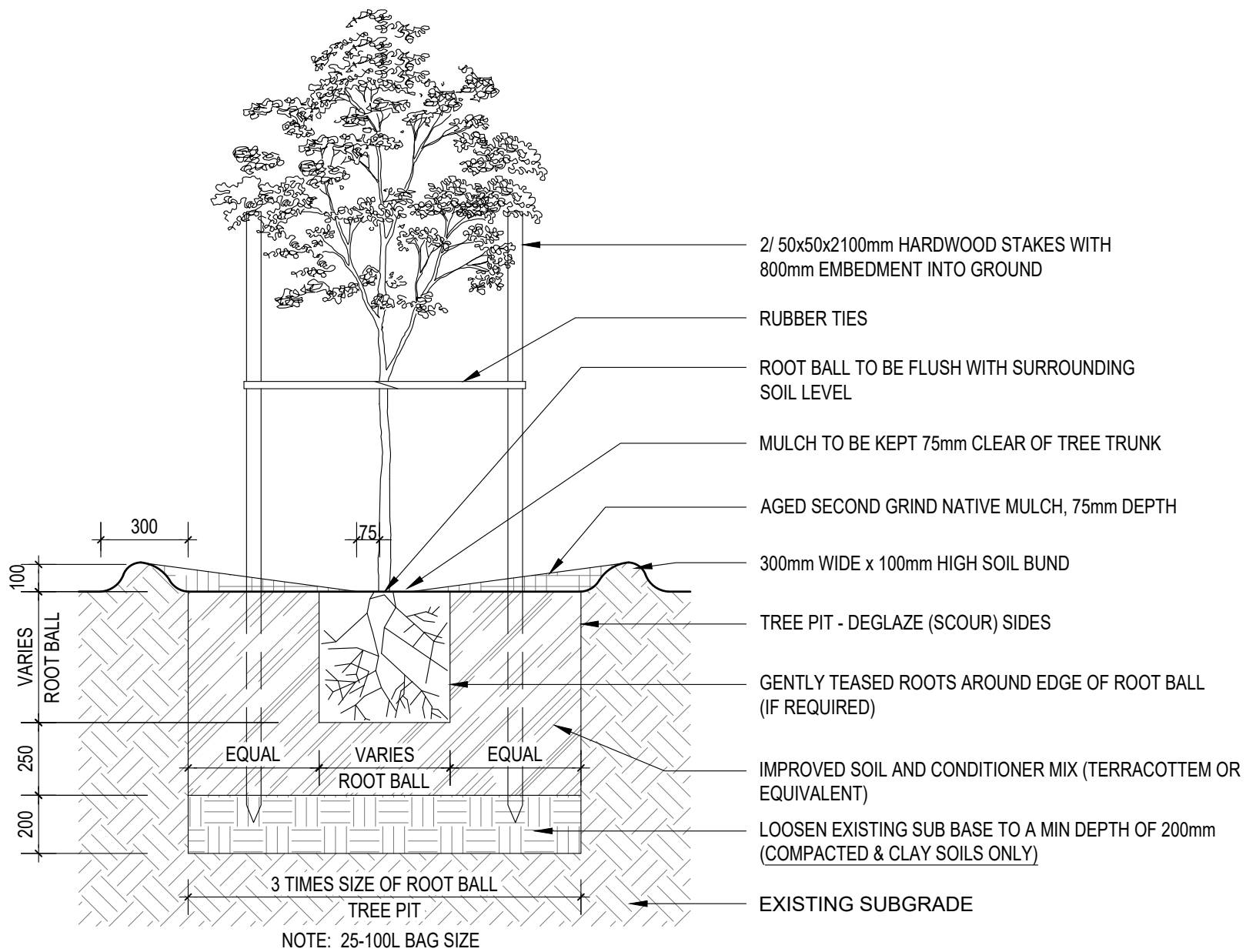
PROJECT NO. 1912	SCALE @ A3 AS SHOWN	PLOT DATE 04/09/2019	REVISION B
---------------------	------------------------	-------------------------	---------------

DRAWN MC	CHECKED PV	APPROVED MG	DRAWING NO. DD-214
-------------	---------------	----------------	-----------------------

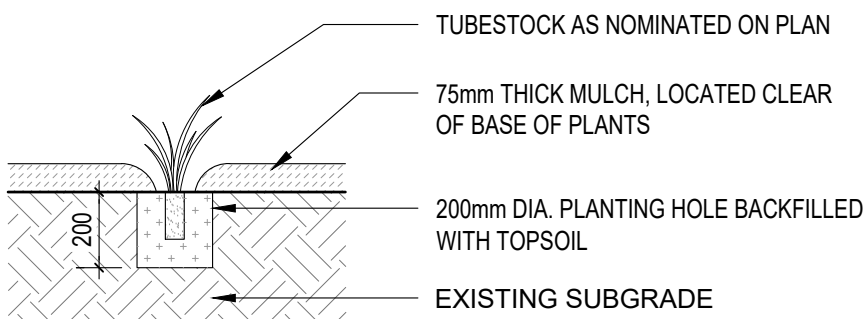
**JOSH BYRNE & ASSOCIATES**  
 LANDSCAPE • SUSTAINABILITY • COMMUNICATIONS  
 08 9433 3721  
 Suite 109, Atwell Buildings  
 3 Cantonment Street, Fremantle WA 6160  
 PO Box 1866, Fremantle WA 6959  
 www.joshbyrne.com.au

NOTE: CHECK ALL DIMENSIONS ON SITE PRIOR TO COMMENCING WORK. WRITTEN DIMENSIONS SHALL TAKE PRECEDENCE. ALL DRAWINGS TO BE READ IN CONJUNCTION WITH MANUFACTURERS AND CONSULTANTS DOCUMENTATION AND SPECIFICATION. REPORT ANY DISCREPANCIES TO LANDSCAPE ARCHITECT BEFORE PROCEEDING WITH WORK.  
 COPYRIGHT © THIS DOCUMENT MAY ONLY BE USED FOR THE PURPOSE FOR WHICH IT WAS COMMISSIONED IN ACCORDANCE WITH THE TERMS OF ENGAGEMENT.

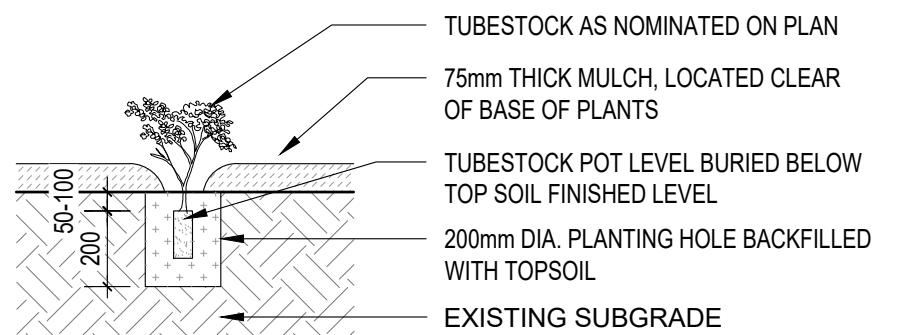




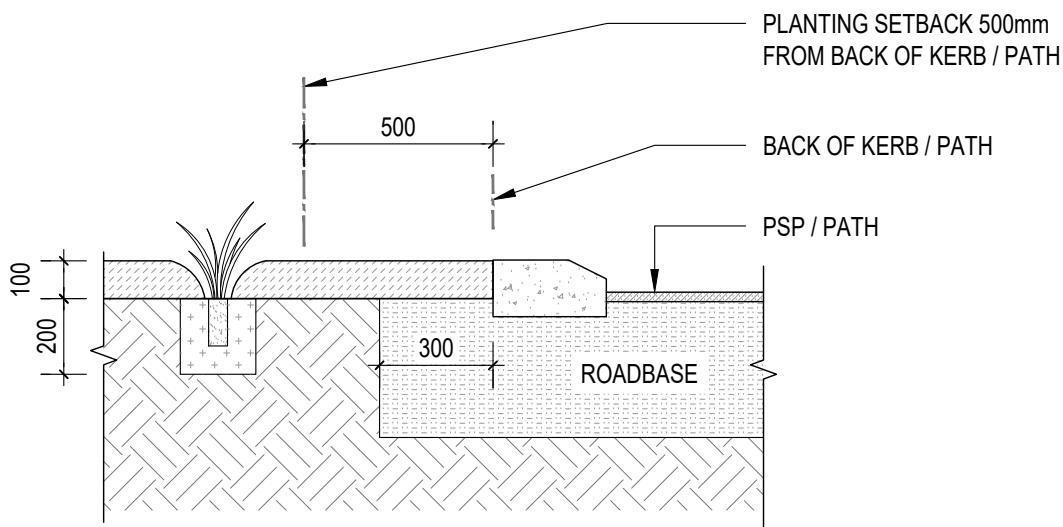
01 TYPICAL DETAIL - TREE PLANTING  
DD-300 SCALE: 1:20



02 TYPICAL DETAIL - TUBESTOCK (STRAPPY PLANTS)  
DD-300 SCALE: 1:20



03 TYPICAL DETAILS - TUBESTOCK (WOODY PLANTS)  
DD-300 SCALE: 1:20



NOTE: DO NOT BREAK UP OR DISTURB ROAD BASE WITHIN 300mm FROM THE BACK OF KERB.

04 TYPICAL DETAIL - PLANTING SETBACK  
DD-300 SCALE: 1:20

## FINAL ISSUE

DATE	DESCRIPTION	REV
04/09/2019	FINAL ISSUE	B
22/08/2019	ISSUE FOR REVIEW	A

PROJECT TITLE  
**TOWN OF COTTESLOE**  
RAILWAY CORRIDOR GREENING DESIGN  
COTTESLOE, WA

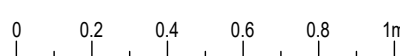
DRAWING TITLE  
TYPICAL DETAILS

PROJECT NO.	SCALE @ A3	PLOT DATE	REVISION
1912	AS SHOWN	04/09/2019	

DRAWN	CHECKED	APPROVED	DRAWING NO.
MC	PV	MG	DD-300

**JOSH BYRNE & ASSOCIATES**  
LANDSCAPE • SUSTAINABILITY • COMMUNICATIONS

08 9433 3721  
Suite 109, Atwell Buildings  
3 Cantonment Street, Fremantle WA 6160  
PO Box 1866, Fremantle WA 6959  
www.joshbyrne.com.au



1:20

NOTE: CHECK ALL DIMENSIONS ON SITE PRIOR TO COMMENCING WORK. WRITTEN DIMENSIONS SHALL TAKE PRECEDENCE. ALL DRAWINGS TO BE READ IN CONJUNCTION WITH MANUFACTURERS AND CONSULTANTS DOCUMENTATION AND SPECIFICATION. REPORT ANY DISCREPANCIES TO LANDSCAPE ARCHITECT BEFORE PROCEEDING WITH WORK.

COPYRIGHT © THIS DOCUMENT MAY ONLY BE USED FOR THE PURPOSE FOR WHICH IT WAS COMMISSIONED IN ACCORDANCE WITH THE TERMS OF ENGAGEMENT.



LANDSCAPING NOTES  
SOFT WORKS

PROTECTION OF TREES

- PROTECT & RETAIN EXISTING TREES, TO COMPLY WITH 'AS 4970-2009 - PROTECTION OF TREES ON DEVELOPMENT SITES' & 'AS 4373 - PRUNING OF AMENITY TREES'
- ALL EXCAVATIONS WITHIN A 5m RADIUS OF ALL TREE TRUNKS ARE TO BE PRECEDED BY HAND DIGGING ON THE TREE SIDE OF ANY TRENCH TO THE DEPTH OF EXCAVATION REQUIRED.
- ALL TREE ROOTS UP TO 25mm IN DIAMETER MUST BE CUT WITH SHARP SECATEURS ON THE TREE SIDE OF THE EXCAVATION
- NO TREE ROOT LARGER THAN 25mm SHALL BE CUT UNTIL PHOTOGRAPHIC EVIDENCE HAS BEEN EMAILED TO THE SUPERINTENDENT AND APPROVAL TO CUT HAS BEEN GRANTED. GENERALLY, ROOTS GREATER THAN 25mm SHOULD BE LEFT IN TRENCH AND SERVICES WORKED AROUND THEM.
- UNDER NO CIRCUMSTANCES SHOULD ROOTS BE TORN OR PULLED FROM THE GROUND PRIOR TO CUTTING.
- TAKE ALL NECESSARY PRECAUTIONS TO PROTECT TREES AND VEGETATION, INCLUDING THE FOLLOWING:
  - DO NOT STORE MATERIALS UNDER OR NEAR TREES.
  - DO NOT PARK VEHICLES, MACHINES, TOOLS, ETC UNDER TREES.
  - DO NOT DAMAGE TREE BARK OR OVER HANGING BRANCHES ETC.
  - DO NOT CUT TREE ROOTS EXCEEDING 25mm DIAMETER UNLESS APPROVED BY THE SUPERINTENDENT.

SOIL CONDITIONER

TERRACOTTEM OR EQUIVALENT: A HIGH QUALITY SOIL CONDITIONER  
APPLICATION: FOR NON TUBE STOCK TREES ONLY. APPLY AS PER MANUFACTURER'S RECOMMENDATIONS.REFER DETAIL 01-DD300  
FOR IRRIGATED SHRUBS AREAS: INSTALL 50MM THICK SOIL CONDITIONER TO ALL LAWN AND EXOTIC PLANT AREAS AND BLEND WITH TOP 200MM OF SITE SOIL PRIOR TO PLANTING.

SOIL WETTING AGENT

PRODUCT NAME/BRAND: SURFACTANT TYPE SOIL WETTING AGENT SUCH AS RICHGRO "EZI-WET", OR EQUIVALENT APPROVED BY THE SUPERINTENDENT,  
APPLICATION: AS PER MANUFACTURER'S RECOMMENDATIONS TO ALL PLANTING AREAS.

CONTAINERISED SHRUBS/TUBE STOCK

- THE CONTRACTOR SHALL SELECT THE CONTAINERISED PLANTS TO THE FOLLOWING SPECIFICATION:
- PLANT STOCK MUST BE IN A HEALTHY VIGOROUS CONDITION, AT THE HEIGHTS/SIZES SPECIFIED
  - FREE FROM DISEASE, INJURY, INSECTS, ALL WEEDS AND ROOTS OF WEEDS;
  - NO PLANT WILL BE ACCEPTED WHICH IS UNHEALTHY, DAMAGED, MALFORMED, HAS NOT BEEN ADEQUATELY HARDENED OFF OR IS OTHERWISE INFERIOR IN QUALITY, OR WHICH DOES NOT CONFORM IN ANY WAY WITH THE PLANTS SPECIFIED. PLANTS WITH ABRASIONS OF THE BARK, SUNSCALDS, DISFIGURING KNOTS, OR FRESH CUTS OF LIMBS OVER 20MM, WHICH HAVE NOT COMPLETELY CALLUSED, WILL BE REJECTED. THESE PLANTS WILL BE REJECTED AND REPLACED BY THE CONTRACTOR AT NO COST;
  - ROOTS SHALL BE WELL-DEVELOPED WITHIN CONTAINERS;
  - PLANTS SHALL NOT BE PRUNED BEFORE DELIVERY;
  - ONE (1) SAMPLE OF PLANT STOCK MUST BE SUBMITTED TO THE SUPERINTENDENT PROVING NO ROOT BOUND CONDITION EXISTS;
  - NO SUBSTITUTION SHALL BE MADE WITHOUT WRITTEN APPROVAL OF THE SUPERINTENDENT ;
  - IT IS THE RESPONSIBILITY OF THE CONTRACTOR TO ENSURE THAT PLANT MATERIALS ARE OF THE NUMBER, SPECIES AND VARIETY, SIZE AND CONDITION AS SET OUT IN THE DRAWINGS.
  - THE CONTRACTOR SHALL ARRANGE WITH THE SUPERINTENDENT FOR A SITE INSPECTION OF ALL MATERIAL FROM THE SOURCE, NURSERIES AT ONE HOLDING AREA.

CONTAINERISED TREES - 5L POT SIZE AND GREATER

- THE CONTRACTOR SHALL SELECT THE CONTAINERISED TREES TO THE FOLLOWING SPECIFICATION:
- ALL STOCK MUST BE SELF-SUPPORTING, HAVE A TAPERED STEM AND HAVE THE ABILITY TO BEND THE MAIN STEM OVER BY 30 DEGREES WITHOUT FALLING OVER;
  - ONE (1) SAMPLE OF PLANT AND TREE STOCK MUST BE SUBMITTED TO THE SUPERINTENDENT PROVING NO ROOT BOUND CONDITION EXISTS;
  - TREE STOCK MUST BE IN A HEALTHY VIGOROUS CONDITION AT THE SIZES SPECIFIED;
  - FREE FROM DISEASE, INJURY, INSECTS, ALL WEEDS AND ROOTS OF WEEDS;

- IT IS THE RESPONSIBILITY OF THE CONTRACTOR TO ENSURE THAT PLANT MATERIALS ARE OF THE NUMBER, SPECIES AND VARIETY, SIZE AND CONDITION AS SET OUT IN THE DRAWINGS;
- NO SUBSTITUTION SHALL BE MADE WITHOUT WRITTEN APPROVAL OF THE SUPERINTENDENT .
- THE CONTRACTOR SHALL ARRANGE WITH THE SUPERINTENDENT FOR A SITE INSPECTION OF ALL MATERIAL FROM THE SOURCE, NURSERIES AT ONE HOLDING AREA

TREE STAKES AND TIES


- THE FOLLOWING OUTLINES THE REQUIREMENTS FOR TREE STAKES AND TIES DEPENDING ON THE SIZE OF THE TREE;
- 25-100L TREE STOCK REQUIRES TWO (2) 50X50X2100MM LONG HARDWOOD TIMBER OR RECYCLED PLASTIC BLACK TREE STAKES;
  - ALL STAKED TREES MUST USE A HEAVY-DUTY FLAT FLEXIBLE BLACK PLASTIC TREE TIE. RECOMMENDED PRODUCT 'HEAVY DUTY FLAT TREE TIE (PRODUCT CODE FT400-18) FROM GREENWAY ENTERPRISES (PH. 08 9358 5045)

MULCH

- ALL MULCH IS TO BE:
- FREE FROM PERENNIAL WEEDS AND THEIR ROOTS, BULBS OR RHIZOMES
  - FREE FROM ROCKS OR STONES, AND BUILDING RUBBLE, INCLUDING BRICKS, CONCRETE, PLASTER, TIMBER, OIL OR ANY OTHER MATTER DELETERIOUS TO PLANT GROWTH
  - FREE FROM DETRIMENTALLY HIGH SALT CONTENT LEVELS
  - COMPRISED TOTALLY OF ORGANIC MATTER AND FREE FROM SILT MATERIAL.
  - FOR GARDEN BEDS OUTSIDE OF IMPACT AREAS APPLY 75MM THICK SEASONED NATIVE WOOD MULCH TO ALL NEW GARDEN AREAS

REQUIREMENTS FOR JUTE MATTING

- IT IS RECOMMENDED THAT JUTE MATTING BE INSTALLED ON GRADIENTS GREATER THAN 1 IN 6.  
IT IS THE RESPONSIBILITY OF THE CONTRACTOR TO CONFIRM THE GRADIENTS OF ALL EMBANKMENTS FOR JUTE MATTING REQUIREMENTS.

<b>FINAL ISSUE</b>			
----	----	----	----
----	----	----	----
----	----	----	----
----	----	----	----
----	----	----	----
----	----	----	----
----	----	----	----
----	----	----	----
04/09/2019	FINAL ISSUE		A
DATE	DESCRIPTION		REV
PROJECT TITLE			
<b>TOWN OF COTTESLOE</b>			
RAILWAY CORRIDOR GREENING DESIGN			
COTTESLOE, WA			
DRAWING TITLE			
SPECIFICATIONS			
PROJECT NO. 1912	SCALE @ A3 AS SHOWN	PLOT DATE 04/09/2019	REVISION
FILE PATH P:\01 PROJECTS COMMERCIAL\1912 TOC RAIL CORRIDOR GREENING\08 DRAWINGS\02_BA\03 DETAILED DESIGN\04 SHEET SET MANAGER			<b>A</b>
DRAWN MC	CHECKED PV	APPROVED MG	DRAWING NO. <b>DD-400</b>
		<b>JOSH BYRNE &amp; ASSOCIATES</b> LANDSCAPE • SUSTAINABILITY • COMMUNICATIONS 08 9433 3721 Suite 109, Atwell Buildings 3 Cantonment Street, Fremantle WA 6160 PO Box 1866, Fremantle WA 6959 www.joshbyrne.com.au	
NOTE: CHECK ALL DIMENSIONS ON SITE PRIOR TO COMMENCING WORK. WRITTEN DIMENSIONS SHALL TAKE PRECEDENCE. ALL DRAWINGS TO BE READ IN CONJUNCTION WITH MANUFACTURERS AND CONSULTANTS DOCUMENTATION AND SPECIFICATION. REPORT ANY DISCREPANCIES TO LANDSCAPE ARCHITECT BEFORE PROCEEDING WITH WORK.			
COPYRIGHT © THIS DOCUMENT MAY ONLY BE USED FOR THE PURPOSE FOR WHICH IT WAS COMMISSIONED IN ACCORDANCE WITH THE TERMS OF ENGAGEMENT.			