



DRAWING PREPARED BY "SHARNI HOWE ARCHITECTS", IN CONJUNCTION WITH THE "FORESHORE IMPLEMENTATION COMMITTEE" AUGUST, 2018

WITH THANKS TO PREVIOUS CONSULTANTS FOR BACKGROUND REPORTS (SUCH AS PATRIC DEVILLEN'S, P&V) AND PROVIDING BASE MAPPING SUPPORT (SUCH AS DMERGE/CHRIS NEWTON).

**GENERAL**

PLEASE NOTE: THIS "VISUAL SUMMARY" DIAGRAM IS TO BE READ TOGETHER WITH THE TOWN OF COTTESLOE'S "FORESHORE MASTERPLAN" BRIEFING DOCUMENT  
 OUR OVERALL AIM IS TO PRODUCE AN INTEGRATED MASTERPLAN, CAPABLE OF INCREMENTAL IMPLEMENTATION (I.E. "STAGE BY STAGE") TO PRODUCE A MORE "SEAM-LESS" LONG TERM VISION.  
 ANY FUTURE PLANNING DECISIONS MUST BE GUIDED BY A BROAD RANGE OF ASSOCIATED DOCUMENTS, FOR EXAMPLE CHR MAPPING 2015, ETC. PLEASE REFER TO THE "BRIEFING" DOCUMENT FOR THIS ESSENTIAL BACKGROUND

**1 ELEMENT**

**DESIGN OBJECTIVES**  
 : NORTH COTTESLOE, NODE 4  
 : THE IMPORTANCE OF THIS NORTHERN "ANCHOR" TO THE COTTESLOE FORESHORE PRECINCT TO BE MAINTAINED AND ITS FOCAL ROLE ENHANCED WITHIN ANY FUTURE PLANNING INVESTIGATIONS  
 : KEY VISTAS, FROM/TO ERIC STREET TO BE RETAINED.

**2 ELEMENT**

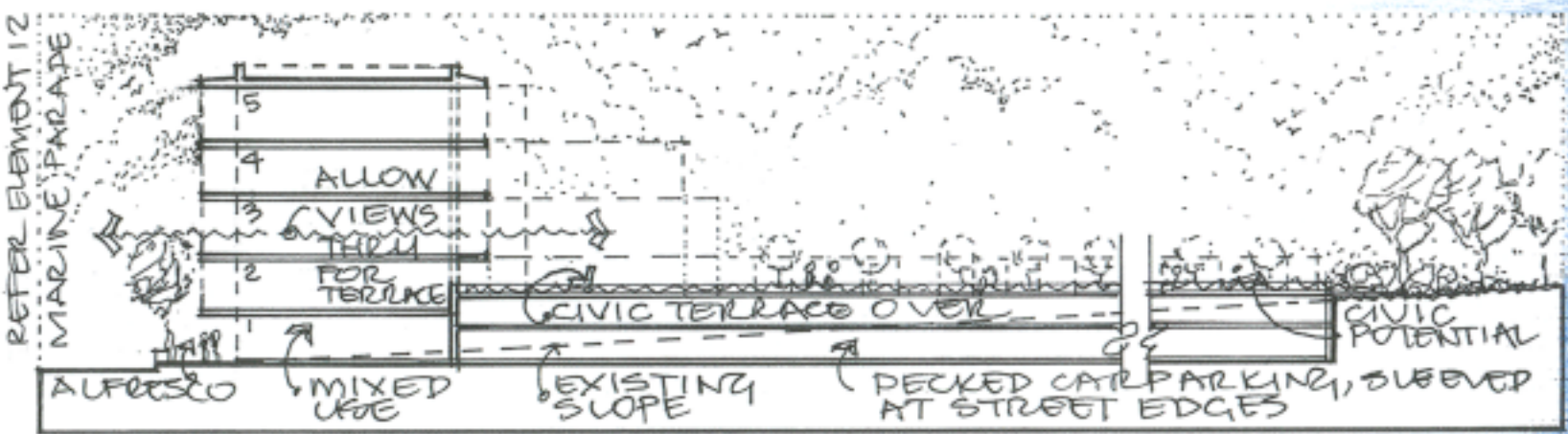
**DESIGN OBJECTIVES**  
 : NEW POOL; TORESHORE PRECINCT  
 : THE FEASIBILITY IS CURRENTLY UNDERWAY, WITH A NUMBER OF LOCATIONS BEING INVESTIGATED. ANY AGREED OUTCOME IS TO BE FULLY INCORPORATED WITHIN THE FINAL "FORESHORE MASTERPLAN".  
 \* NOTE: THREE MAIN LOCATION OPTIONS ARE BEING CONSIDERED AND THEY HAVE BEEN APPROXIMATELY LOCATED ON THIS DRAWING, ONE TO THE NORTH AND TWO AT THE SOUTH (EITHER SIDE OF THE SOUTHERN GROUNDS)

**3 ELEMENT**

**DESIGN OBJECTIVES**  
 : EXISTING DUNAL FORMATION AND VEGETATION  
 : MAINTAIN, PRESERVE & RESTORE EXISTING EXTENT OF DUNAL "ZONE", WHILST ENSURING APPROPRIATE AND CONTROLLED PEDESTRIAN ACCESS. BOARDWALKS TO BE CONSIDERED, WHERE APPROPRIATE  
 : IT IS ANTICIPATED THAT NO MORE PERMANENT BUILDINGS (EXCLUDING LANDSCAPE AND CIVIC STRUCTURES) WILL BE PERMITTED WEST OF MARLINE PARADE... UNLESS THEY ARE "TEMPORARY" IN NATURE.  
 : RECOGNIZE THE IMPORTANCE OF GOOD "INTERACTION WITH NATURE" (FOR CHILDREN + ALL AGES) WITHIN THE MASTERPLAN, PARTICULARLY IN ANY REMNANT/DUNE LANDSCAPE SETTINGS.

**4 ELEMENT**

**DESIGN OBJECTIVES**  
 : CARPARK TWO  
 : CARPARK TWO IS A "CLASS A" RESERVE; HENCE A RANGE OF OPTIONS AND METHODOLOGIES WILL HAVE TO BE FURTHER INVESTIGATED, ALONG WITH IMPACT + COST ANALYSIS (SUCH AS TRAFFIC, PARKING STUDIES; BUDGET/COSTINGS; POLICY IMPLICATIONS ETC)  
 : UTILISE THE EXISTING CARPARK TWO (CPK 2) "FOOTPRINT" TO EXPLORE DEVELOPMENT OPPORTUNITIES TO RE-VITALIZE THIS KEY PART OF THE COTTESLOE FORESHORE, RANGING FROM LEASEHOLDERS, HOTEL TENURE THRU, TO MIXED USE AND RECREATION CIVIC OUTCOMES; INCORPORATING "PECKED" CONCEPTS  
 : ANY RESULTANT "PECKED" CARPARK MUST BE "SUEVED" BY ACTIVE BUILD FORM AT PUBLIC EDGES (HEIGHT RANGE FROM TWO - FIVE STORES)  
 : ENSURE UNIVERSAL ACCESS AND A "PEDESTRIAN FRIENDLY" EDGE IS MAINTAINED TO THE JOHN BLACK DUNE PARK FRONTAGE  
 : ANY RESULTANT BUILD FORM MUST INCORPORATE "VIEW CORRIDORS" TO ALLOW "VIEWS THRU" (FROM THE BEACH TERRACE TO BEACH)  
 : ANY RESULTANT DEVELOPMENT WILL REQUIRE DETAILED "DESIGN GUIDELINES" PLACE MAKING STRATEGIES TO GUIDE A SUCCESSFUL BUILD FORM AND URBAN DESIGN OUTCOME FOR THE LOCAL COMMUNITY



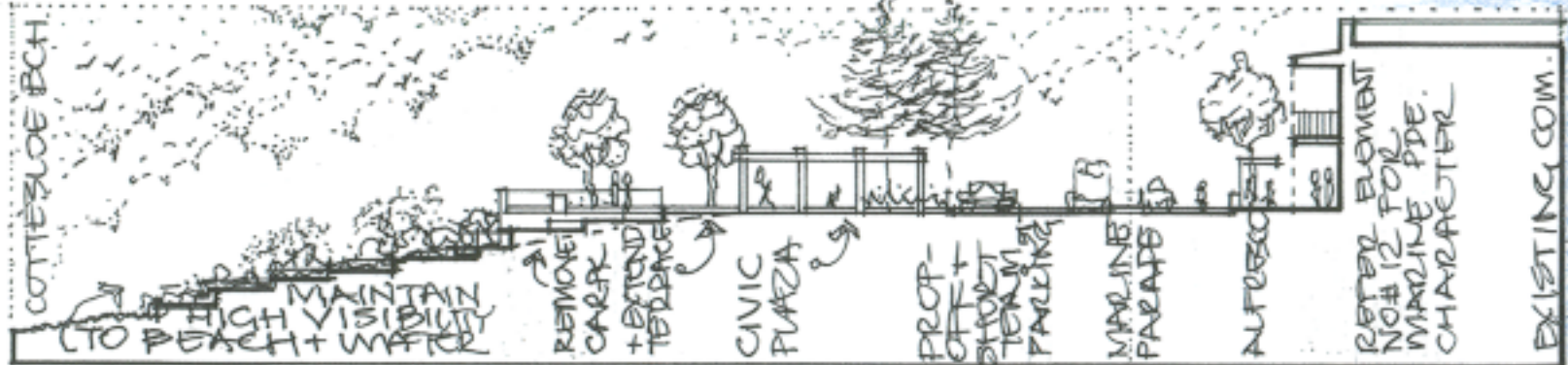
INDICATIVE CROSS SECTION: PROPOSED RE-DEVELOPMENT SITE, FOR THE COMMUNITY, CPK 2

**5 ELEMENT**

**DESIGN OBJECTIVES**  
 : FORESHORE; BEACH AND PROMENADE  
 : THERE HAVE BEEN A NUMBER OF GENERAL DESIGN PRINCIPLES ESTABLISHED TO GUIDE ANY FUTURE FORESHORE MASTER PLAN (REFER BRIEFING DOCUMENT) WHICH MUST BE INCORPORATED SUCH AS PROVIDING FOR MULTI-FUNCTION EVENTS OR MULTI-GENERATIONAL USE.  
 : THERE ARE ALSO A NUMBER OF GENERAL "CHARACTER" REQUIREMENTS, INTENDED TO GUIDE THE NATURE OF ANY IMPROVEMENTS. SUCH AS MAINTAINING A "LOCAL, FRIENDLY AND UNIQUE COTTESLOE FEEL" OR IMPROVING THE URBAN AND LANDSCAPE CONNECTIONS EAST/WEST ACROSS THE FORESHORE  
 : A CORE AIM IS TO RESPECT OUR UNIQUE COASTAL ENVIRONMENT + REDUCE NEGATIVE ASPECTS (E.G. WATER RUN-OFF CONTROL)

**6 ELEMENT**

**DESIGN OBJECTIVES**  
 : CARPARK ONE; FORESHORE PROMENADE + CIVIC PLAZA  
 : REMOVE EXISTING CARPARK AND RATIONALIZE CIVIC OUTCOMES. CONSIDER EXISTING TERRACES, IN RESOLVING THE LEVEL CHANGE ISSUES BETWEEN THE BEACH AND MARLINE PARADE  
 : PROVIDE FOR A RANGE OF ACTIVITIES AND RECREATIONAL SHELTERS (E.G. ADDITIONAL SEATING, BBQ, INTER-GENERATIONAL USES)  
 : CREATE A "FOCAL" CIVIC PLAZA, FOR ALL USERS



INDICATIVE CROSS SECTION: PROPOSED NEW URBAN FOCUS FOR THE COMMUNITY, CPK 1

**7 ELEMENT**

**DESIGN OBJECTIVES**  
 : INDIANAS (CITA ROOMS)  
 : UPGRADE BEACH ACCESS AND UNIVERSAL PATHS TO FACILITATE BEACH/TOILET ACCESS

**8 ELEMENT**

**DESIGN OBJECTIVES**  
 : COTTESLOE SURF LIFESAVING CLUB, PRECINCT  
 : TO PROMOTE "HEALTHY LIFESTYLE" ACTIVITIES THRU THE PROVISION OF OUTDOOR GYM AND PUBLIC SHOWER FACILITIES. RESOLVE THE "BLIND BEND" PATH TO THE WEST + RESPECT ABORIGINAL SIGNIFICANT SITE ADJACENT

**9 ELEMENT**

**DESIGN OBJECTIVES**  
 : SHAPE STRUCTURES, BEACH  
 : INTENTION TO CONSTRUCT BEACH-SIDE SHAPE STRUCTURE 'PROTOTYPE'. ONCE DESIGN DECIDED, THE EXISTING STRUCTURES TO BE REMOVED AND THE DUNAL MASTERPLAN TO INCORPORATE THIS DESIGN ELEMENT

**10 ELEMENT**

**DESIGN OBJECTIVES**  
 : FORESHORE SOUTH, OCEAN ACCESS  
 : PROMOTE & ASSIST UNIVERSAL ACCESS TO THE OCEAN  
 : A STUDY IS UNDERWAY FOR THE PROVISION OF A RAMP (NORTHSIDE OF EXISTING GROUNDLINE) WITH ASSOC SUPPORT FACILITIES, SUCH AS WHEELCHAIR STAIR/DISABLED PARKING, ETC. STUDY RESULTS TO BE INCORPORATED INTO THE NEW DESIGN & MASTERPLAN



TYPICAL WALKABLE CATCHMENT (~800M)

KEY VISTA  
ERIC STREET

REINFORCE KEY VISTAS & GREEN LINKS

EXISTING COTTESLOE LANDSCAPE & TREE SELECTIONS ARE AN IMPORTANT PART OF THE LOCAL IDENTITY (THAT SHOULD BE MAINTAINED + ENHANCED WITHIN ANY FUTURE MASTERPLAN)

NOTE: MARLINE PARADE IMPROVEMENTS TO FACILITATE PUBLIC TRANSIT, FOOT PATHS TO BE MAINTAINED + ENHANCED

ELLEN STREET

BRYAN WAY

NOTES: GENERAL: MARLINE PARADE  
 : ANY MARLINE PARADE IMPROVEMENTS TO MAINTAIN "LEGIBILITY" FOR ALL USERS (E.G. USE OF DIFFERENT MATERIALS)  
 : ANY MARLINE PARADE IMPROVEMENTS TO ALLOW FOR FUTURE VEGETATION, USES (E.G. TOWER/MARINE WALKERS) + IMPROVED ACCESS (PARKING)  
 : ANY REDEVELOPMENT OF CARPARK 2 SHOWN TO BE WITHIN AN APPROVED MARLINE PARADE OUTCOMES FOR THE URBAN FORESHORE

12 ELEMENT: MARINE PARADE UPGRADE (CONTINUED)

NAPLIER STREET

NOTES: ARCHITECTURALLY CHARACTER OF GREEN LINK TO BE MAINTAINED + ENHANCED NORTH SUN ACCESS

12 ELEMENT: MARINE PARADE UPGRADE

DESIGN OBJECTIVES  
 : PROVIDE PEDESTRIAN FRIENDLY SHARED SPACE ENVIRONMENT FROM FOREST TO NAPLIER STREET  
 : CREATE A LOW SPEED (20-30 KM) OUTCOME FACILITATE BEACH ACCESS EAST/WEST  
 : PROVIDE "DROP-OFF" ZONE AT CENTRE  
 : PROVIDE WIDE FOOTPATH + ALFRESCO TO EAST SIDE  
 : RATIONALISE ON-STREET PARKING AND ENSURE SHORT TERM BAYS FOR BUSINESS FACILITATE BIKE + PUBLIC TRANSIT USES/ACCESS  
 : PROVIDE SHADE + FRAME VISTAS

JOHN STREET

EXISTING GREEN LINKS TO BE REINFORCED + LANDSCAPE CHARACTER TO BE RETAINED.  
 PUS + KEY VISTAS TO BEACH TO BE MAINTAINED WITH GOOD PEDESTRIAN CONNECTIONS TO BEACH TO BE MAINTAINED + IMPROVED

KEY VISTA GREEN LINKS

11 ELEMENT: SEA VIEW GOLF CLUB

DESIGN OBJECTIVES  
 : EXPLORE DEVELOPMENT + ACTIVITY OPPORTUNITIES AT KEY CORNER

"TO PRESERVE AND IMPROVE COTTESLOE'S NATURAL BUILT ENVIRONMENT AND BEACH LIFESTYLE, BY USING SUSTAINABLE STRATEGIES IN CONSULTATION WITH THE COMMUNITY"

TOWN OF COTTESLOE : MISSION STATEMENT

Visual Summary 2018  
OF COMMUNITY RESOLUTIONS

Cottesloe Foreshore: